

ITEM MARKED 4 OFF REQ

ITEM MARKED 4 OFF REQ

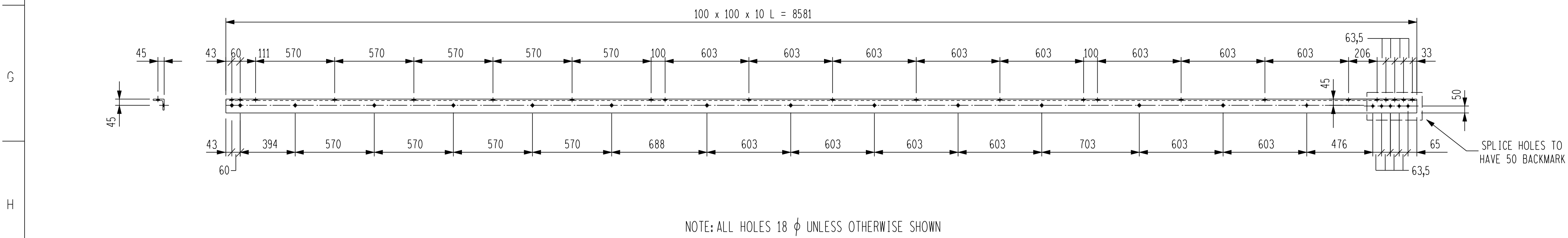
ITEM MARKED 4 OFF REQ

ITEM MARKED 40 OFF REQ

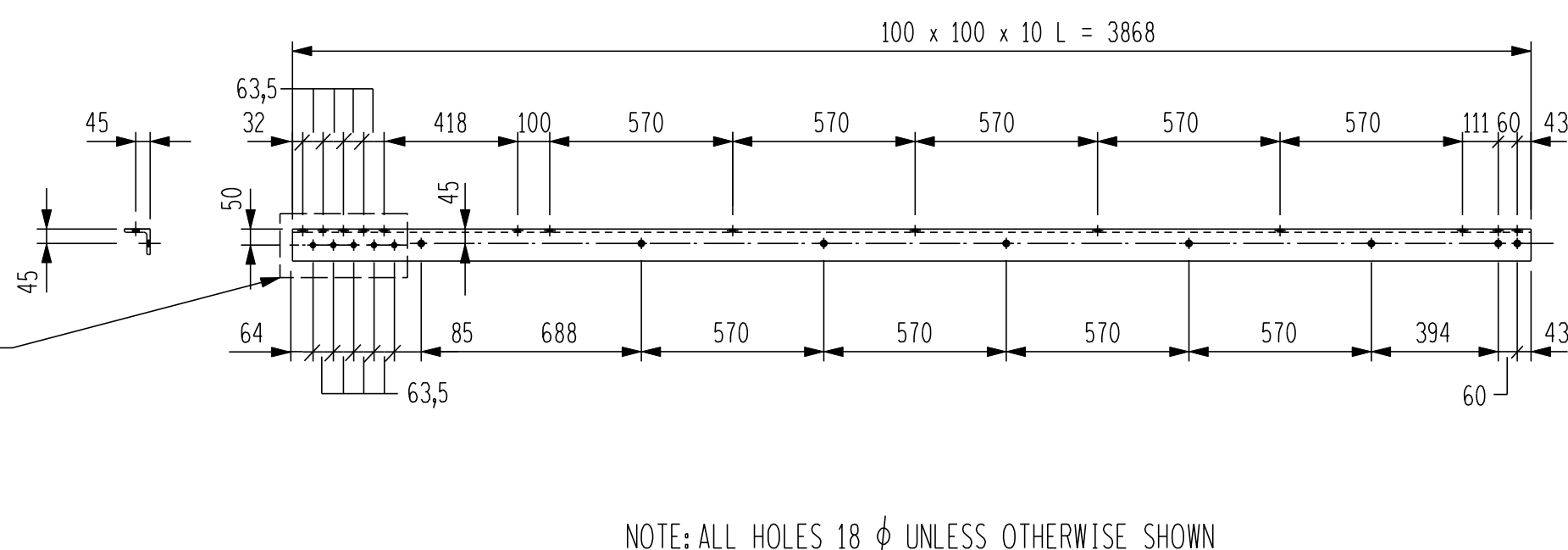
ITEM MARKED 40 OFF REQ

ITEM MARKED 36 OFF REQ

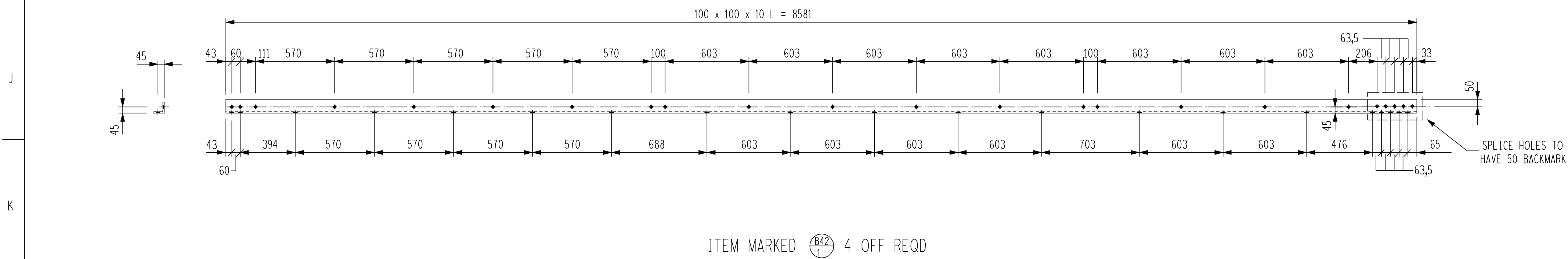
ITEM MARKED 24 OFF REQ



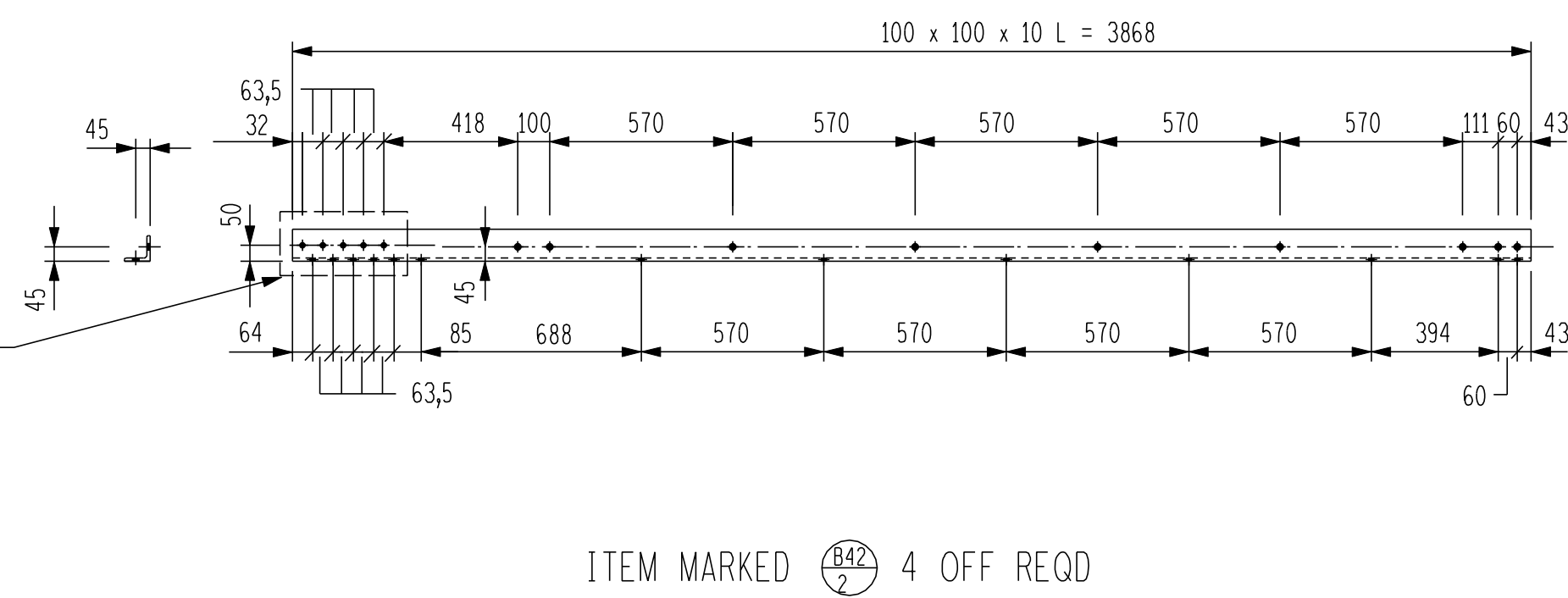
NOTE: ALL HOLES 18 Ø UNLESS OTHERWISE SHOWN



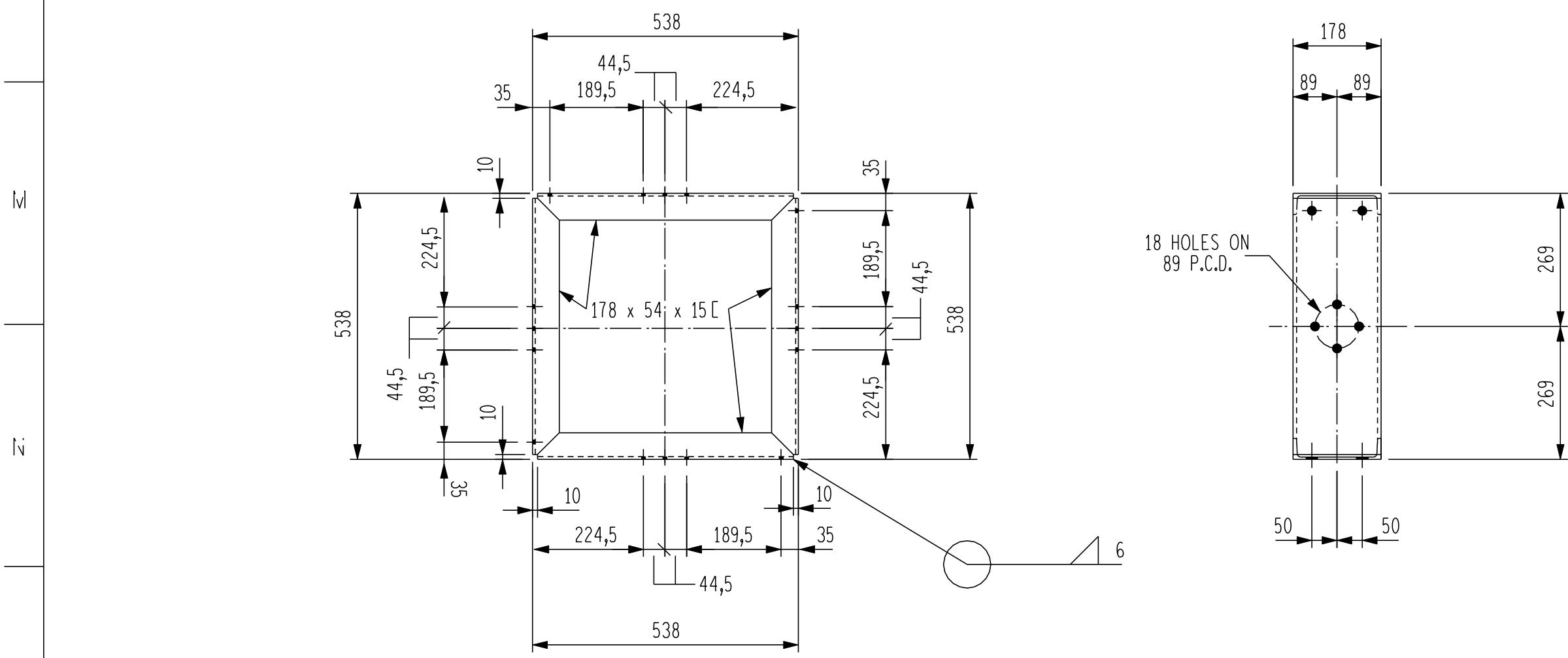
NOTE: ALL HOLES 18 Ø UNLESS OTHERWISE SHOWN



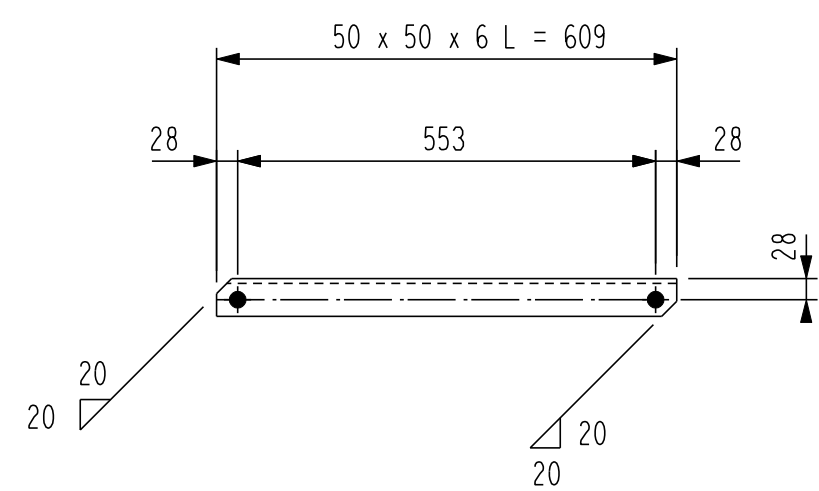
ITEM MARKED 4 OFF REQ



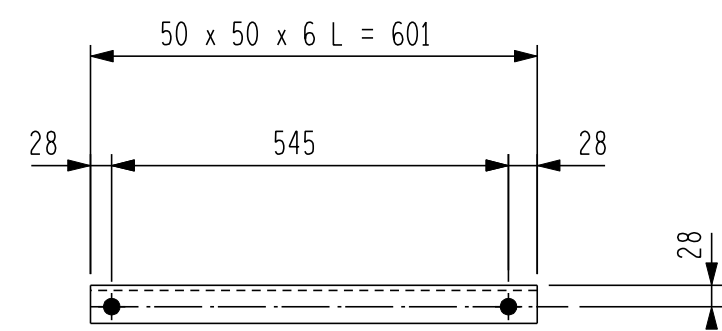
ITEM MARKED 4 OFF REQ



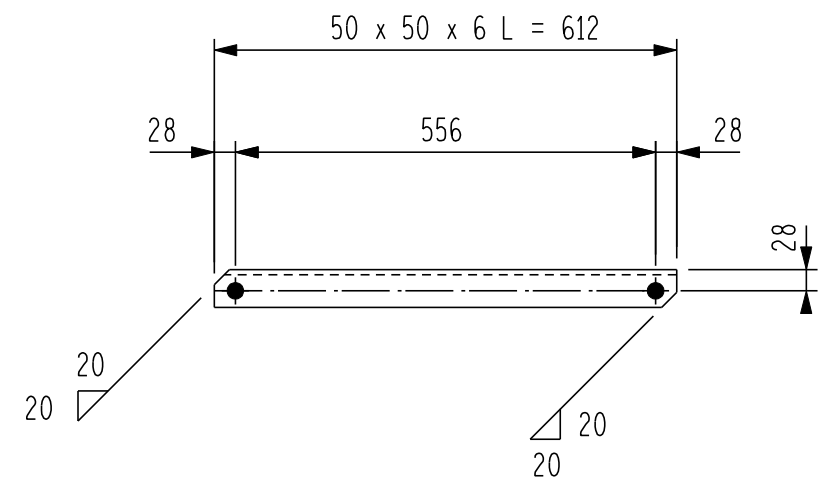
ITEM MARKED 3 OFF REQ



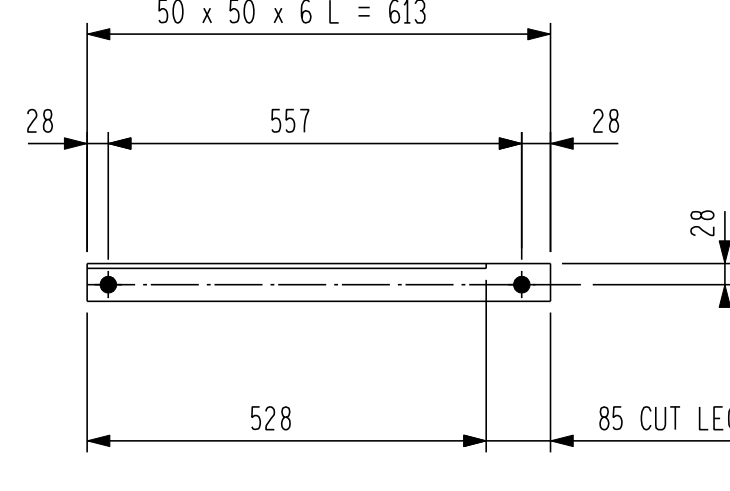
ITEM MARKED 4 OFF REQ



ITEM MARKED 4 OFF REQ



ITEM MARKED 4 OFF REQ



ITEM MARKED 4 OFF REQ

ITEM MARKED 4 OFF REQ TO OPP. HAND

NOTES:

- 1 - ALL WELDING AND WELDING SYMBOLS SHALL CONFORM TO SABS 10044 PART 1 TO PART 5.
- 2 - ALL STEELWORK TO BE GRADE 350W, TO SANS 1431 AND HOT DIP GALVANISED TO SANS 121.
- 3 - ALL WELDS TO BE SEAL WELDED.
- 4 - ALL HOLES 18 DIA, UNLESS OTHERWISE STATED.
- 5 - ALL STEELWORK TO BE FABRICATED, ERECTED & LEVELLED, TO A TOLERANCE OF + OR- 1,5 mm.
- 6 - ALL BOLTS SECURING EQUIPMENT TO THIS STRUCTURE, TO BE SUPPLIED BY EQUIPMENT CONTRACTOR.
- 7 - H.D. BOLTS COMPLETE WITH NUT AND WASHER TO BE SUPPLIED BY CIVIL CONTRACTOR.
- 8 - HOLES TO BE DIA. 18 FOR M16 GRADE 4.8 BOLTS HOT DIP GALVANIZED.
- 9 - ALL MARKS TO BE STAMPED ONTO STEELWORK AND SHALL BE CLEARLY LEGIBLE AFTER GALVANISING.
- 10 - ALL MARKS TO BE STAMPED ONTO STEELWORK AND SHALL BE CLEARLY LEGIBLE AFTER GALVANISING.
- 11 - ALL WORK SHALL COMPLY WITH SANS 1200 SERIES SPECIFICATIONS.
- 12 - FOR COLUMN MK 132/C & EW DETAILS - SEE DRG. NO. 0.54/336 & 337

BOLT SCHEDULE				
STRENGTH GRADE 4.8				
MARK	TYPE	LENGTH	No OFF	WASHERS/BOLT
1	M 16	40	80	1 FLAT
2	M 16	40	20	2 FLAT
3	M 16	45	156	1 FLAT
4	M 16	50	8	1 FLAT

NOTES ON BOLTS:
1- BOLTS TO BE SUPPLIED WITH ONE NUT AND ONE WASHER.
2- BOLTS ERECTED WITH HEAD TO INSIDE PREFERRED.
3- WASHER TO BE PLACED UNDER NUT.
4- ALL BOLTS TO BE GALVANIZED.

MASS Kg		
STRUCTURE	BOLTS	TOTAL
1344,2	38,4	1382,34

2	GENERAL REVISION	PHD	BH	DJCS	05/10/11	340	Lighting Spike
1	BEAM TITLE REVISED	PHD	DJCS	DJCS	26/10/09	339	Anti-climbing Device
REV	REVISION DESCRIPTION	BY	CHKD	AUTH	DATE	REFERENCE DRAWINGS	
APPROVED BY DJC SENEAL		ESKOM HOLDINGS LIMITED				REG NO. 2002/015521/06	
CHECKED BY DJC S		132kV YARD STEELWORK (BOLTED)				BEAM ARRANGEMENT (13,2m LONG)	
DATE 27/07/2009		0.54/6613				SHEET NUMBER 0	
DRAWN BY PAUL DOYLE						REVISION 2	
DATE 06/07/2009							
SCALE 1:20							