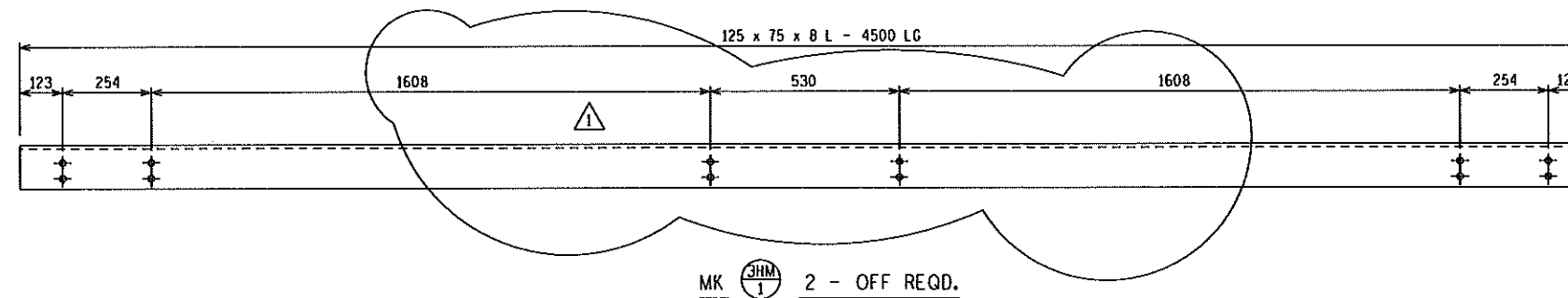
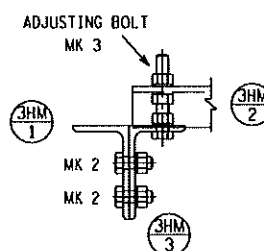


ASSEMBLY



MK 1 2 - OFF REQD.



SECTION A - A

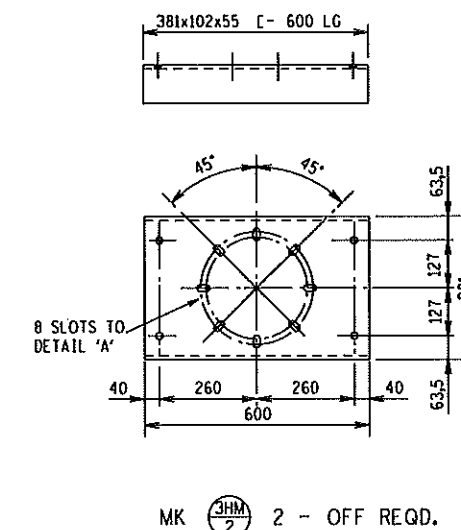
BOLT SCHEDULE (STRENGTH GRADE 4.8)				
MK	DIA	LENGTH	No OFF	WASHER/BOLT
1	M 16	40	8	1 FLAT
2	M 16	40	16	1 FLAT
3	M 16	100	4	3 NUTS & 3 FLAT WASHERS/BOLT

BOLTS NOTE: ALL BOLTS TO BE GALVANISED

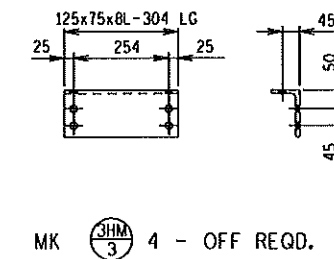
MASS IN kg		
STRUCTURE	BOLTS	TOTAL
191	3,8	191,8

NOTES:

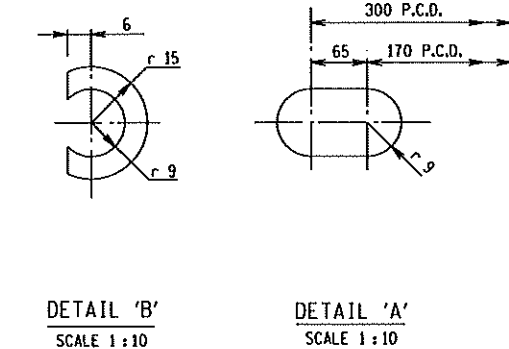
- QUANTITIES SHOWN ARE FOR ONE ITEM ONLY.
- ALL STEELWORK TO BE GRADE 300W, TO SANS 1431 AND HOT DIP GALVANISED TO SANS 121.
- FABRICATION TOLERANCE TO BE + OR - 1,5mm.
- HOLES TO BE DIA. 18 FOR M16 GRADE 4.8 BOLTS HOT DIP GALVANIZED.
- THE CONTRACTOR SHALL SUPPLY ALL NUTS, BOLTS, WASHERS, ETC, REQUIRED FOR ERECTION.
- ALL MARKS TO BE STAMPED ONTO STEELWORK AND SHALL BE CLEARLY LEGIBLE AFTER GALVANISING.
- ALL WORK SHALL COMPLY WITH SANS 1200 SERIES SPECIFICATIONS.



MK 2 2 - OFF REQD.




MK 3 4 - OFF REQD.



DETAIL 'B'
SCALE 1:10

DETAIL 'A'
SCALE 1:10

I	DIMENSIONS REVISED	PHD	DJCS	DJCS	26/01/11	4721	SUPPORT-400KV
REV	REVISION DESCRIPTION	BY	CHKD	AUTH	DATE	REFERENCE DRAWINGS	
APPROVED BY					ESKOM HOLDINGS LIMITED REG NO. 2002/015527/06		
DJC.S							
DATE 17/04/2009							
CHECKED BY		BUSBAR SUPPORT CAP 4,0m FIXING CENTRES					
DJC.S							
DATE 17/04/2009							
DRAWN BY							
PAUL DOYLE		0.54/6609					
DATE 16/04/2009							
SCALE 1:10							
						SHEET NUMBER	REVISION
						0	1