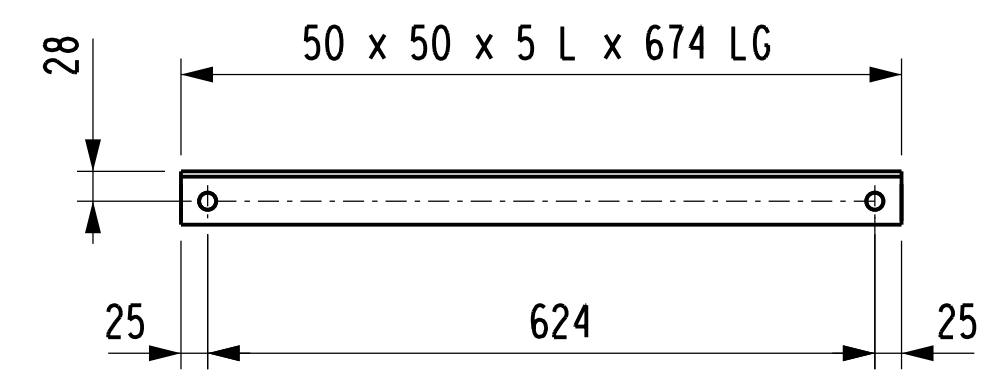
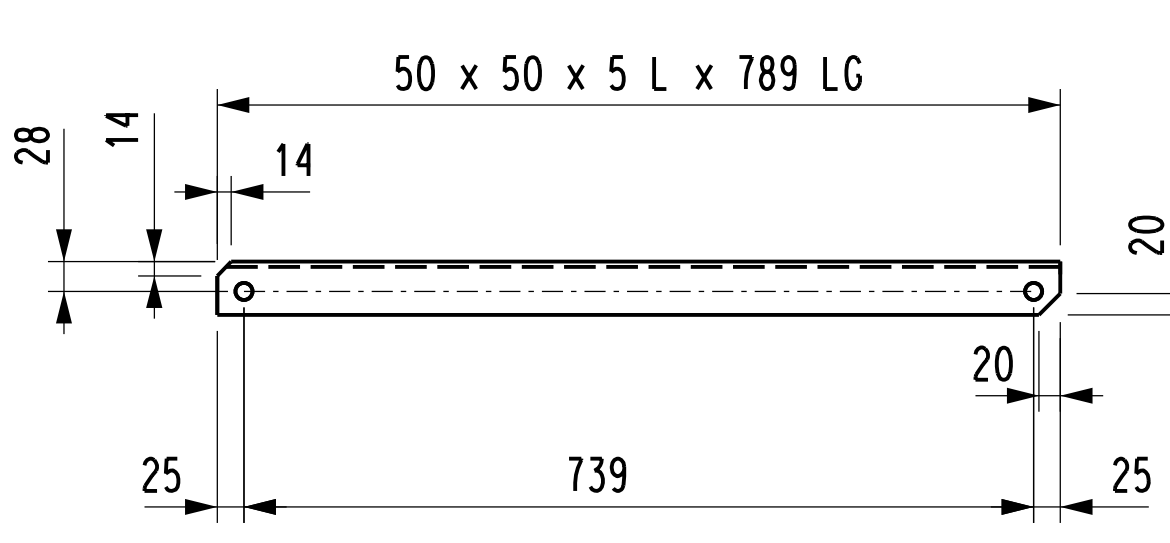


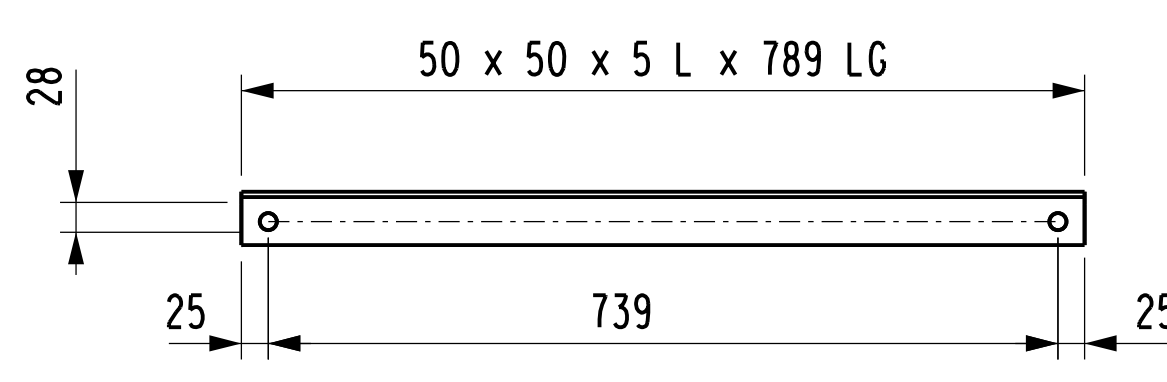
SPLICE PLATE MK'D 7 - 8 OFF REQ'D



BRACE ANGLE MK'D 9 - 4 OFF REQ'D



BRACE ANGLE MK'D 4 - 32 OFF REQ'D

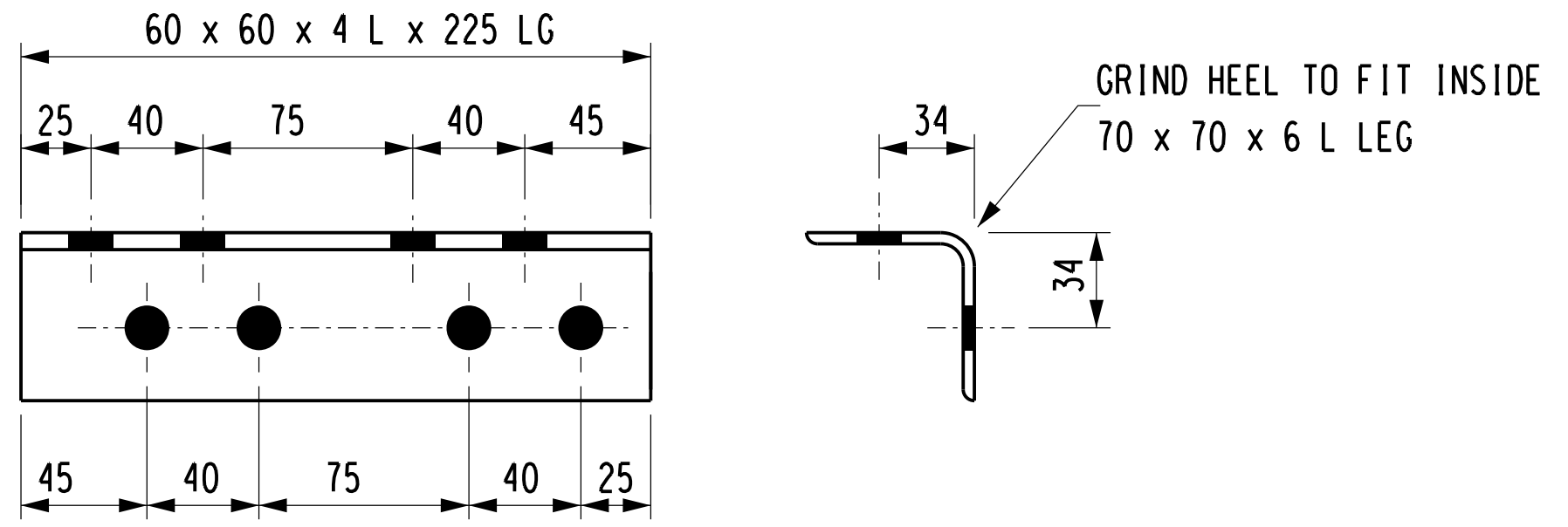


BRACE ANGLE MK'D 3 - 32 OFF REQ'D

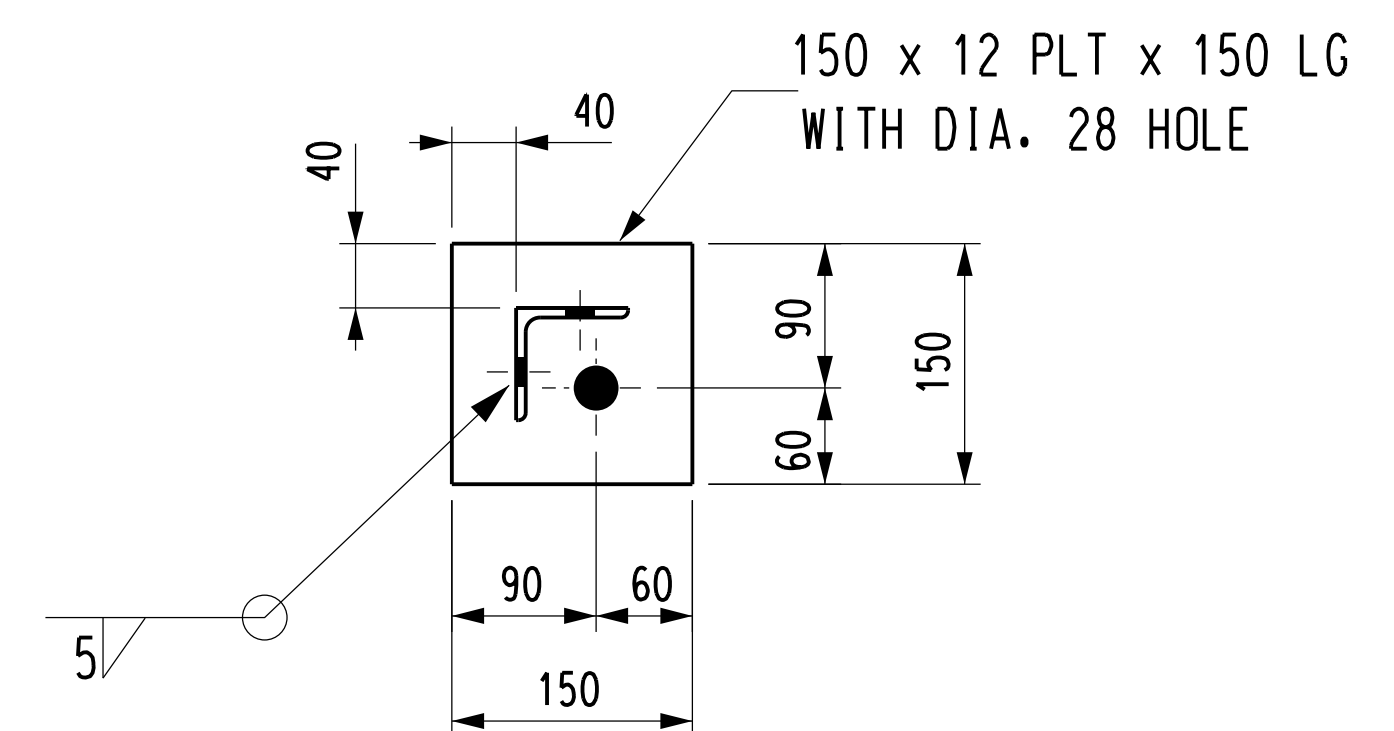
MASS Kg		
STRUCTURE	BOLTS	TOTAL
450	14	464

BOLT SCHEDULE				
STRENGTH GRADE 4.8				
MARK	TYPE	LENGTH	No OFF	WASHER
1	M 16	35	44	FLAT
2	M 16	40	64	FLAT

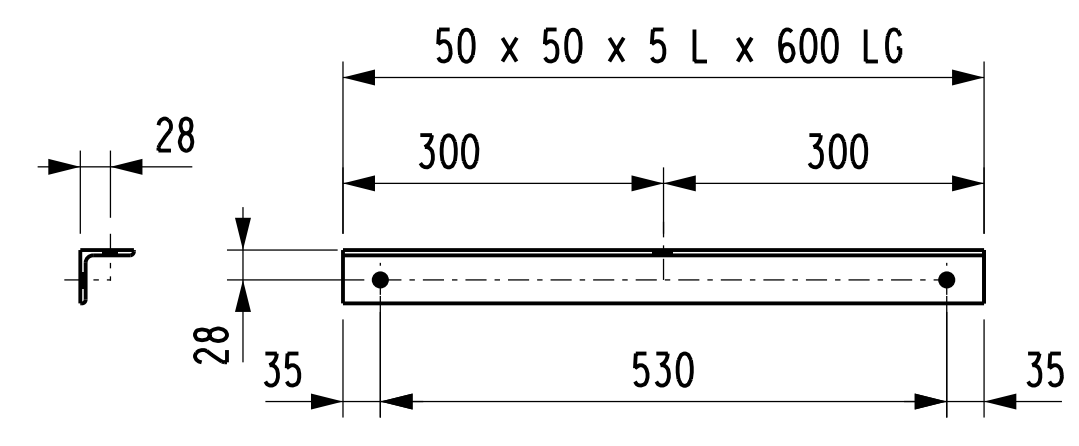
NOTES ON BOLTS:
1- BOLTS TO BE SUPPLIED WITH ONE NUT AND WASHER.
2- BOLTS ERECTED WITH HEAD TO INSIDE PREFERRED.
3- WASHER TO BE PLACED UNDER NUT.
4- ALL BOLTS TO BE GALVANIZED.



SPLICE ANGLE MK'D 6 - 4 OFF REQ'D



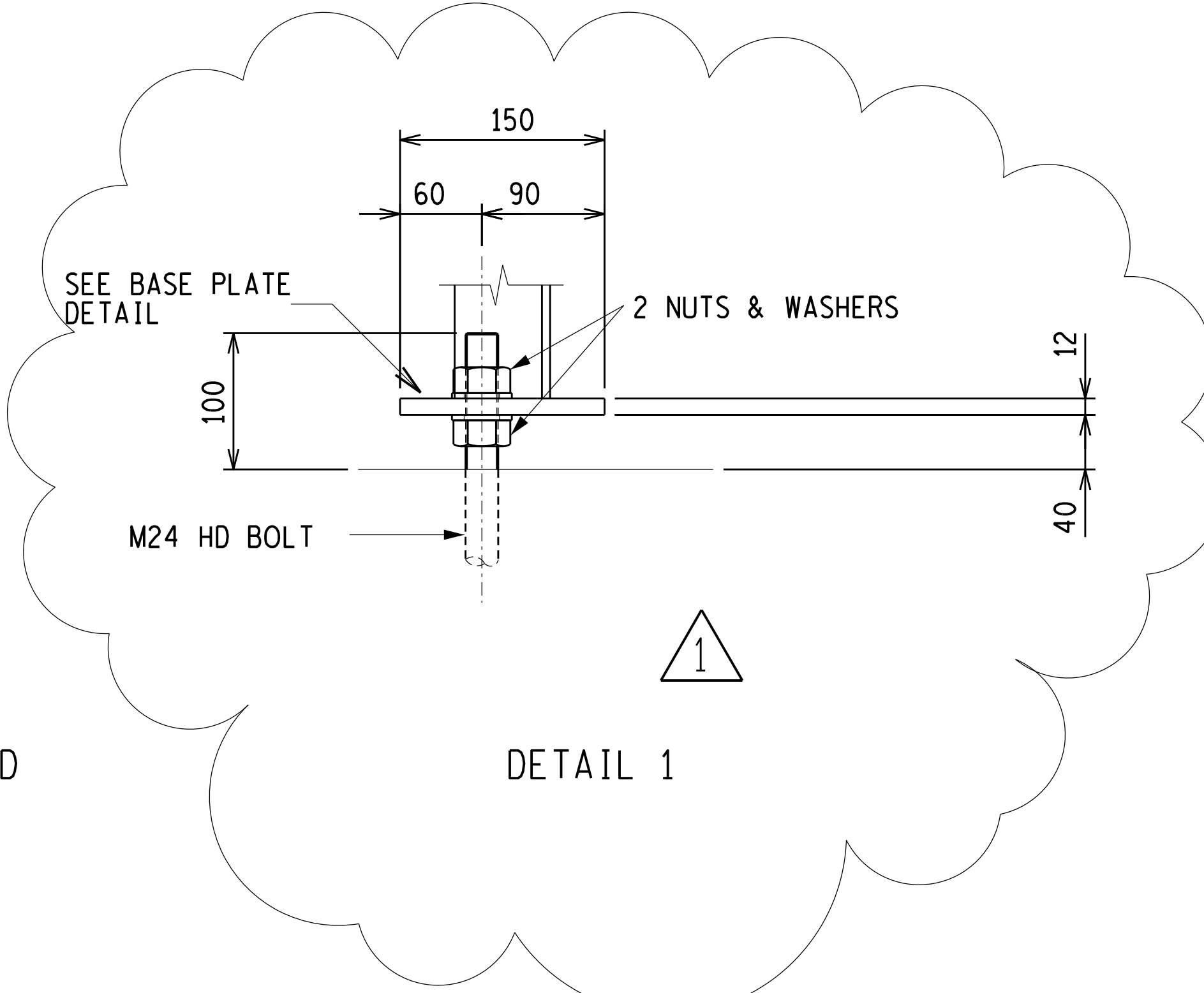
BASE PLATE DETAIL





BRACE ANGLE MK'D 5 - 2 OFF REQ'D

- NOTES:
- 1 - ALL STRUCTURAL USE OF STEEL TO CONFORM TO SANS 10162. GRADE OF STEEL TO BE TO SANS 1431 GRADE 300WA.
 - 2 - STEELWORK TO BE HOT DIP GALVANIZED TO SANS 121.
 - 3 - ALL HOLES 18 DIA. UNLESS OTHERWISE STATED.
 - 4 - ALL STEELWORK TO BE FABRICATED, ERECTED & LEVELLED, TO A TOLERANCE OF + OR - 1,5 mm.
 - 5 - ALL BOLTS SECURING EQUIPMENT TO THIS STRUCTURE, TO BE SUPPLIED BY EQUIPMENT CONTRACTOR.
 - 6 - H.D. BOLTS COMPLETE WITH NUT AND WASHER TO BE SUPPLIED BY CIVIL CONTRACTOR.
 - 7 - ALL MARKS TO BE STAMPED ONTO STEELWORK AND SHALL BE CLEARLY LEGIBLE AFTER GALVANISING.
 - 8 - ALL WORK TO BE DONE ACCORDING TO SANS 1200 SERIES OF SPECIFICATIONS.
 - 9 - ALL WELDS TO BE CONTINUOUS WELDS TO SANS 10044.

NOTE :- THIS SUPPORT IS DESIGNED FOR SUPPORTING 400 kV TUBULAR BUSBARS WITH A MAX. FAULT CURRENT OF 50 kA. (INSULATOR C10)
SUITABILITY FOR OTHER APPLICATIONS MUST BE CHECKED WITH THE CIVIL DESIGN SECTION.



DETAIL 1

1	DETAIL 1 ADDED			PHD	DJ.C.S	DJ.C.S	17/7/13	0.54/4726	FOUNDATION		
REV	REVISION DESCRIPTION			BY	CHKD	AUTH	DATE	REFERENCE	DRAWINGS		
APPROVED BY		 Eskom Transmission				ESKOM HOLDINGS LIMITED					
DJS.						REG NO.					
DATE		07/12/2006		2002/015527/06							
CHECKED BY		400 kV BUSBAR SUPPORT - 8925 HIGH									
J.N.											
DATE										07/12/2006	
DRAWN BY											
		©		0.54/6434				SHEET NUMBER			
DATE		06/12/2006						REVISION			
SCALE		1									