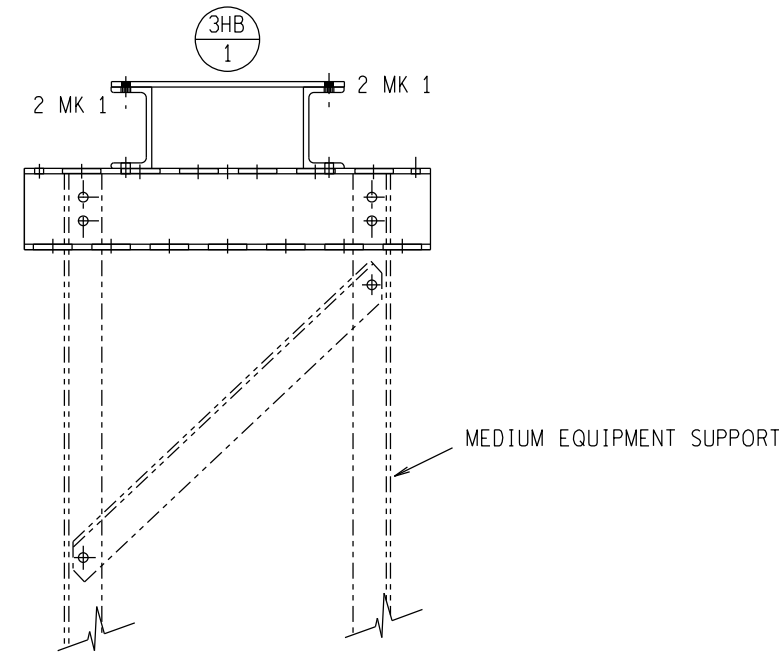
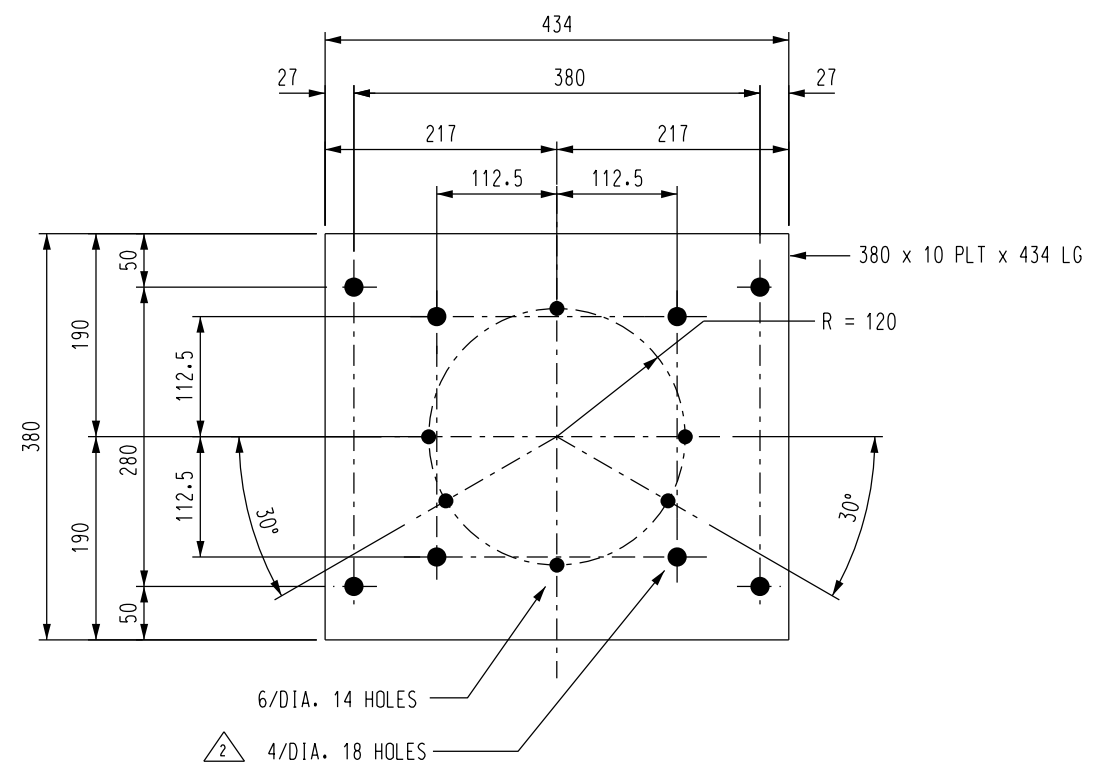


PLAN VIEW



ASSEMBLY OF CAP





1 OFF TOP CAP MRK'D

NOTES:

- 1 - ALL STRUCTURAL USE OF STEEL TO CONFORM TO SANS 10162. GRADE OF STEEL TO BE TO SANS 1431 GRADE 300WA.
- 2 - STEELWORK TO BE HOT DIP GALVANIZED TO SANS 121.
- 3 - ALL HOLES 18 DIA. UNLESS OTHERWISE STATED.
- 4 - ALL STEELWORK TO BE FABRICATED, ERECTED & LEVELLED, TO A TOLERANCE OF + OR - 1,5 mm.
- 5 - ALL BOLTS SECURING EQUIPMENT TO THIS STRUCTURE, TO BE SUPPLIED BY EQUIPMENT CONTRACTOR.
- 6 - H.D. BOLTS COMPLETE WITH NUT AND WASHER TO BE SUPPLIED BY CIVIL CONTRACTOR.
- 7 - ALL MARKS TO BE STAMPED ONTO STEELWORK AND SHALL BE CLEARLY LEGIBLE AFTER GALVANISING.
- 8 - ALL WORK TO BE DONE ACCORDING TO SANS 1200 SERIES OF SPECIFICATIONS.

MASS Kg		
STRUCTURE	BOLTS	TOTAL
13	0,5	13,5

BOLT SCHEDULE				
STRENGTH GRADE 4.8				
MARK	TYPE	LENGTH	No OFF	WASHER
1	M 16	50	4	TAPERED
1 - BOLTS TO BE SUPPLIED WITH ONE NUT AND WASHER.				
2- BOLTS ERECTED WITH HEAD TO INSIDE PREFERRED.				
3- WASHER TO BE PLACED UNDER NUT.				
4- ALL BOLTS TO BE HD GALVANIZED.				

2.	HOLES ADDED	T.L.	D.B.S	D.J.S.	21/08/12		
1.	HOLES ADDED & TITLE REVISED.	A. D.	A. D.	D.J.S.	17/01/07		
REV	REVISION DESCRIPTION	BY	CHKD	AUTH	DATE	REFERENCE DRAWINGS	
APPROVED BY					ESKOM HOLDINGS LIMITED REG NO. 2002/015527/06		
DJS.							
DATE 19/10/2006		TOP CAP FOR SURGE ARRESTERS. USE WITH EXISTING TOP CAP DIA.14 HOLES ON 240 PCD					
CHECKED BY							
J.N.							
DATE 18/10/2006							
DRAWN BY					SHEET NUMBER		
DATE 04/10/2006							
SCALE 1 : 10		0.54/6326			REVISION 2.		