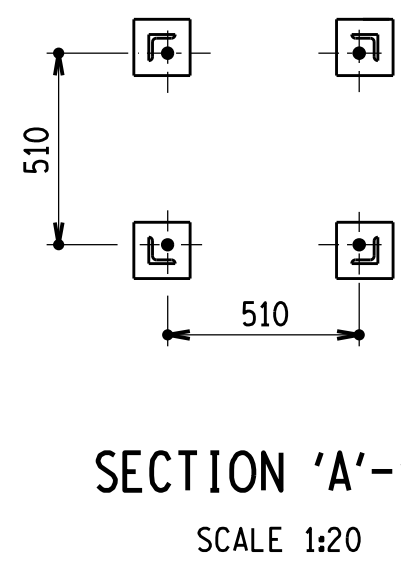


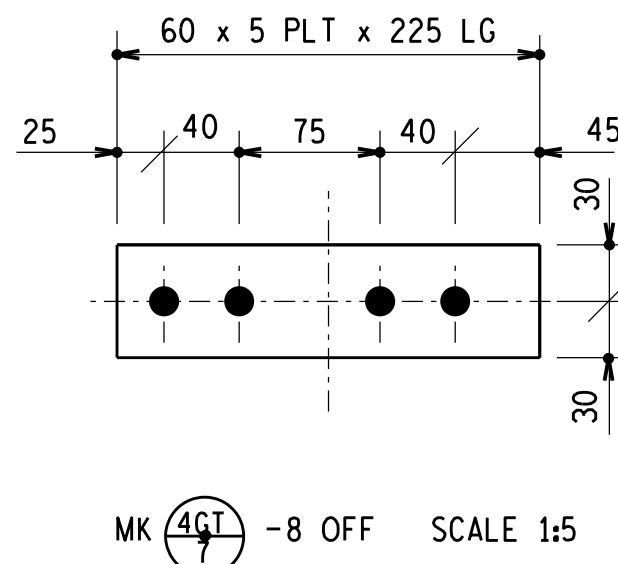
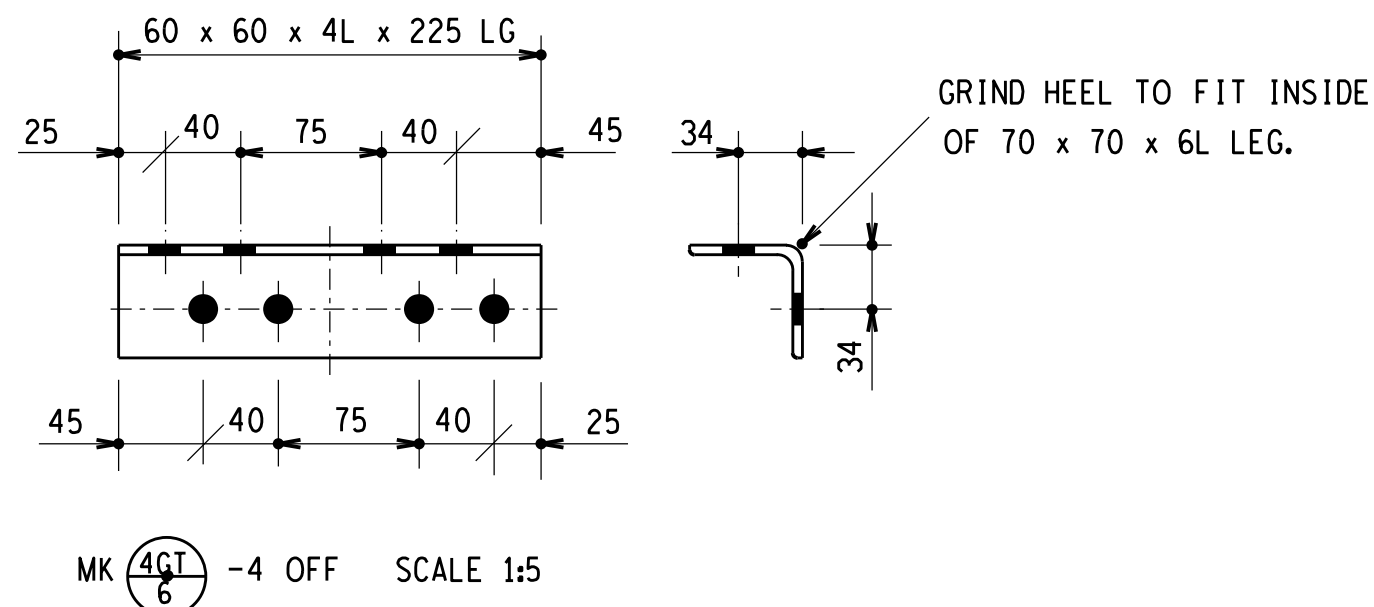
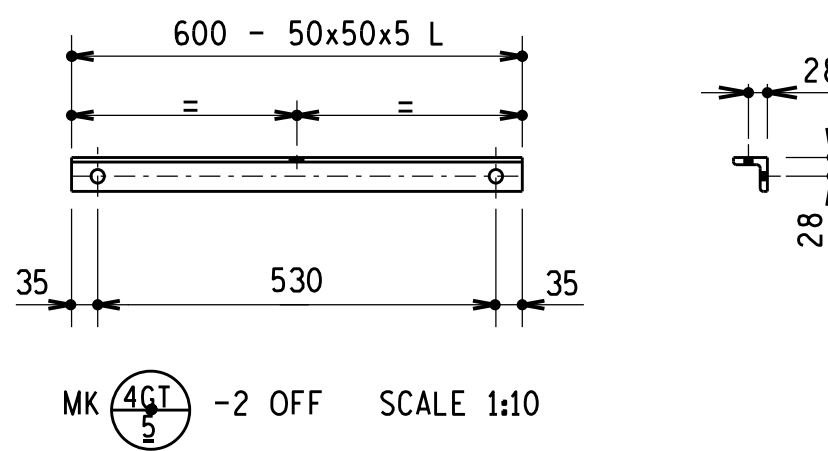
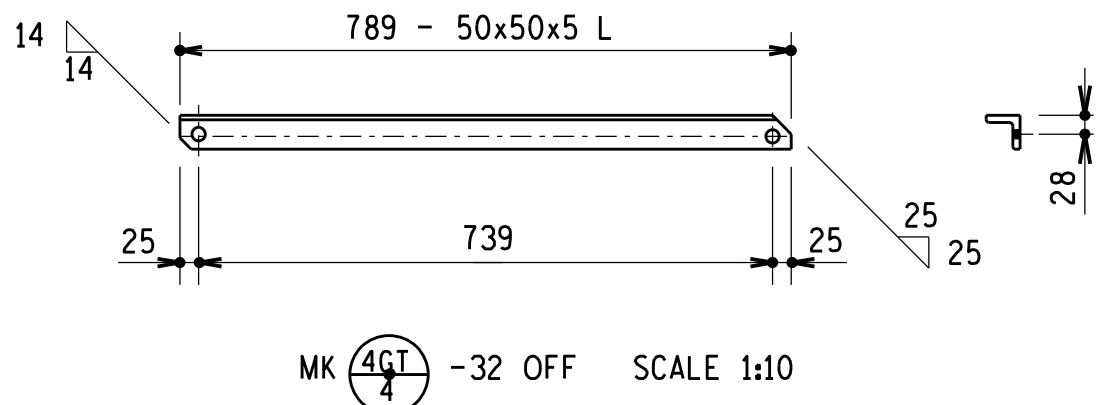
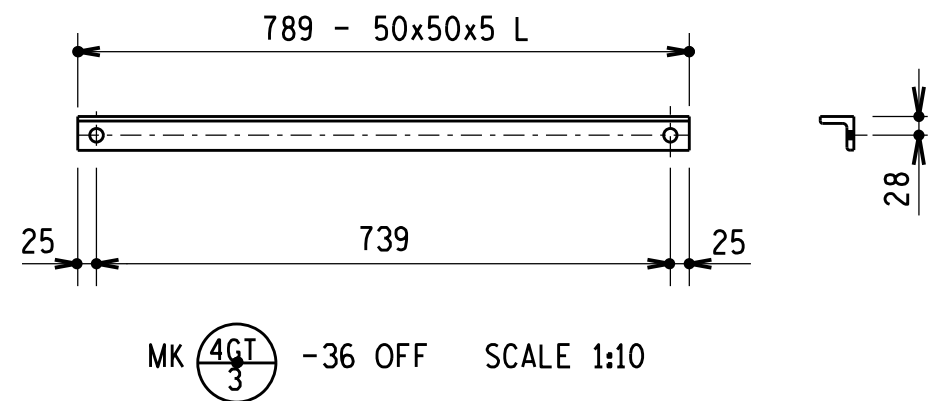
COLUMN ASSEMBLY DETAIL  
SCALE 1:20

LEG ANGLE DETAIL  
SCALE 1:20

DETAIL 1



SECTION 'A'-'A'  
SCALE 1:20



SECTION 'B'-'B'  
SCALE 1:10

BOLT SCHEDULE				
STRENGTH GRADE 4.8				
MARK	TYPE	LENGTH	No OFF	WASHERS PER BOLT
1	M 16	35	44	1.E&I.
2	M 16	40	64	1.E&I.

- NOTES ON BOLTS:
- 1) BOLTS TO BE SUPPLIED WITH NUT AND WASHER.
  - 2) BOLTS ERECTED WITH HEAD TO INSIDE PREFERRED.
  - 3) WASHER TO BE PLACED UNDER NUT.
  - 4) ALL BOLTS TO BE GALVANISED.
  - 5) BEVEL WASHERS REQ'D WHERE BOLTS ARE USED ON CHANNEL SECTIONS.
  - 6) BOLTS INDICATED THUS MK1, MK2.

MASS SCHEDULE	
STEELWORK	451Kg
BOLTS AND WASHERS	14Kg
TOTAL	465Kg

- NOTES:
- 1 - ALL WELDING AND WELDING SYMBOLS SHALL CONFORM TO SABS 044 PART 1 TO PART 5.
  - 2 - ALL STRUCTURAL USE OF STEEL TO CONFORM TO SABS 0162. GRADE OF STEEL TO BE TO SABS 1431 GRADE 300WA.
  - 3 -STEELWORK TO BE HOT DIP GALVANIZED TO SABS 763.
  - 4 -ALL HOLES 18 DIA.UNLESS OTHERWISE STATED.
  - 5 - ALL BOLTS SECURING EQUIPMENT TO THIS STRUCTURE, TO BE SUPPLIED BY EQUIPMENT CONTRACTOR.
  - 6 - H.D.BOLTS COMPLETE WITH NUT AND WASHER TO BE SUPPLIED BY CIVIL CONTRACTOR.
  - 7 - ALL BOLTS & NUTS TO CONFORM TO SABS 135. STRENGTH GRADE 4.8.

NOTE: THIS SUPPORT IS DESIGNED FOR SUPPORTING 400kV TUBULAR BUSBARS WITH A MAX.STATION FAULT CURRENT OF 50kA.( INSULATOR C10.) SUITABILITY FOR OTHER APPLICATIONS MUST BE CHECKED WITH THE CIVIL DESIGN SECTION.

5	DJS.	22/7/13	TITLE REVISED	PHD	DJS.		
4	DJS.	25/6/13	DETAIL 1 ADDED	PHD	DJS.		
3	DJS.	1/9/9	DIMS & REF.ORG REVISED	PHD	DJS.		
2	DJS.	06/02	MEMBER 6 REVISED.	A.D.	J.J.N.	6612	TOP CAP FOR 270 TO 370 PCD
1	M.v/d ENDE	05/98	MEMBER 4 REVISED.	A.D.		4726	FOUNDATION
Ø			FIRST ISSUE / EERSTE UITREIKING			4722	TOP CAP FOR 170 TO 300 PCD
REV	AUTH	DATE	REVISION/REVISES	BY	CHKD	0.54	REFERENCE DRAWINGS
	MAG	DATUM	INDEX REF/INDEXSV	DEUR	NAGES		VERWYSINGSTEKENING
			58				
PLOT SCALE: 200:1				ORG.TEK REGISTRI			
CAD REF No:MUTS0.54/4721L000.R01							
THIS DRAWING HAS BEEN CREATED ON A C.A.D. SYSTEM AND ANY AMENDMENT TO THE DRAWING MUST BE EFFECTED ONLY ON THE SAME C.A.D. SYSTEM							
DRAWN GETEKEN A.D. 27.1.1995				APPROVED			
SCALE SKAAL 1 : 20				GOEDGEKEUR M.v/d ENDE 30.01.95			
				REV			



400kV BUSBAR SUPPORT  
9125 HIGH

0.54/4721 5