

MASS SCHEDULE kg			
ITEM	STRUCTURE	BOLTS, NUTS & WASHERS	TOTAL
CA COLUMN	392	18	410
CB COLUMN	360	17	377
CD COLUMN	329	16	345
CE COLUMN	297	14	311
BA BEAM	250	15	265
BB BEAM	65	4	69

PORTAL STRAIN STRUCTURE ARRANGEMENT.

END STRAIN STRUCTURE ARRANGEMENT

3 x SINGLE CORE CABLES, MOUNTING ARRANGEMENT.

SINGLE 3-CORE CABLE END BOX, MOUNTING ARRANGEMENT.

FND TYPE 1

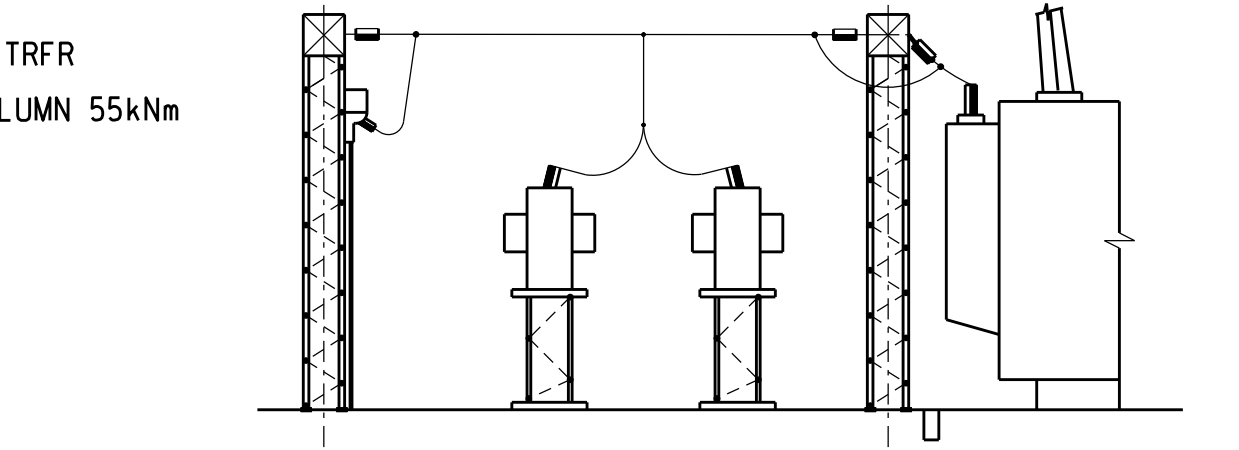
FND TYPE 2

FND TYPE 2

FND TYPE 2

0.54/316 SHT. 1

0.54/316 SHT. 2



NOTES:

1. ALL WELDING TO CONFORM WITH B.S.5135 AND SYMBOLS IN ACCORDANCE WITH SABS 0.44
2. ALL HOLES TO BE 18 DIA, UNLESS OTHERWISE SHOWN.
3. STEELWORK TO BE HOT DIP GALVANISED TO S.A.B.S.763
4. ALL PARTS TO BE CLEARLY STAMPED BEFORE GALVANISING.
5. BOLT MARK NO. INDICATED THUS- 55
6. MAX STRAIN TO BE 4,2KN/PHASE

WAS 0.00/3017

FILENAME: TRFRBSTR
PLOT SIZE: 250

THIS DRAWING HAS BEEN CREATED ON A C.A.D. SYSTEM AND ANY AMENDMENT TO THE DRAWING MUST BE EFFECTED ONLY ON THE SAME C.A.D. SYSTEM
THE C.A.D. REFERENCE NUMBER IS <u>QSA3:100,164 100315L000.R04</u>

0.54/315	
----------	--

SIZE
GROOTTE **A1L**