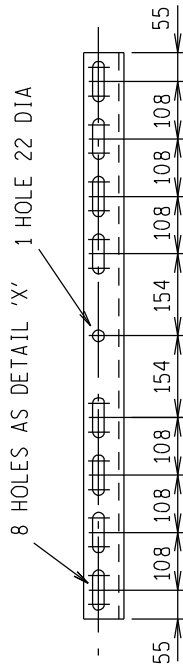
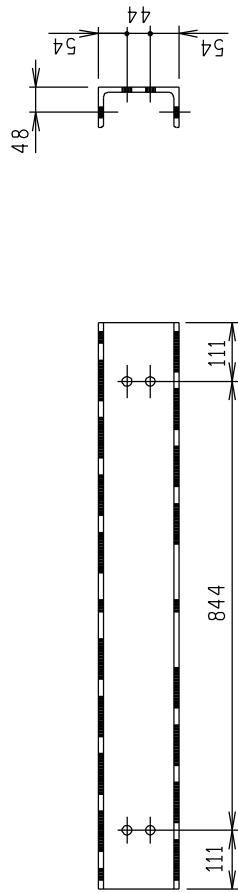
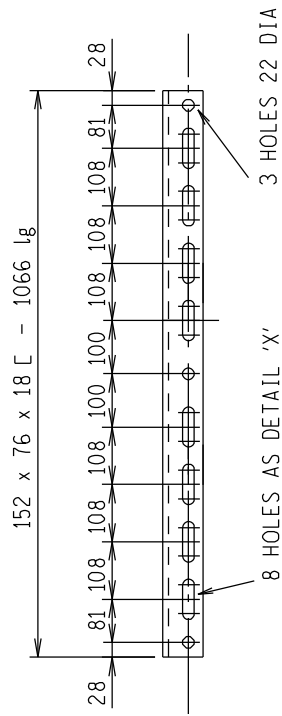


ASSEMBLY OF CAP

ALL PARTS $\left(\frac{3EU}{1}\right)$ MAY BE USED EITHER AS SHOWN OR UPSIDE DOWN, AS REQUIRED, TO GIVE THE DESIRED FIXING CENTRES. THIS TO BE DETERMINED AT SITE DURING ERECTION.



MK $\frac{3EU}{1}$ 4 - OFF REQD.

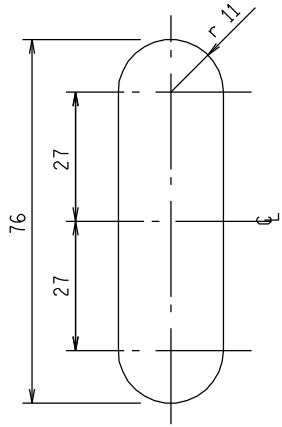
| BOLT SCHEDULE (STRENGTH GRADE 4.6) | | | | |
|------------------------------------|------|--------|--------|-------------|
| WK | DIA | LENGTH | No OFF | WASHER/BOLT |
| 1 | M 20 | 45 | 4 | 2 BEVEL |
| 2 | M 16 | 35 | 8 | 1 FLAT |

BOLTS NOTE: ALL BOLTS TO BE GALVANISED

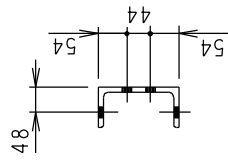
| MASS IN kg | | |
|------------|-------|-------|
| STRUCTURE | BOLTS | TOTAL |
| 77 | 2 | 79 |

THIS DRAWING HAS BEEN CREATED
ON C.A.D. SYSTEM AND ANY
AMENDMENT TO THE DRAWING
MUST BE EFFECTED ONLY
ON THE SAME C.A.D. SYSTEM

THE C.A.D. REFERENCE NUMBER IS:
QSAI:100.164100311.000.R01




HOLE - DETAIL 'X'
SCALE 1:1



NOTES

1. ALL STEELWORK TO BE HOT DIP GALVANISED TO S.A.B.S. 763.
2. ALL MARKS TO BE STAMPED ONTO STEELWORK AND SHALL BE CLEARLY LEGIBLE AFTER GALVANISING.
3. ALL STEELWORK FABRICATED, ERECTED AND LEVELLED TO A TOLERANCE OF $\pm 1,5\text{mm}$.
4. ALL HOLES $\phi 18$ UNLESS OTHERWISE STATED.
5. ALL BOLTS SECURING EQUIPMENT TO THIS STRUCTURE TO BE SUPPLIED BY EQUIPMENT CONTRACTOR.

| | | | | | | | |
|-----|-------------|---------------|--|--|------|---------------|--------|
| 1 | A.C.B. | 25-7. 1986 | REDRAWN ON CAD, BOLTS & NOTES REVISED | V.P.H. J.D.S. | 704 | ADJ. CAP 'L3' | P.C.D. |
| Ø | | | FIRST ISSUE / EERSTE UITREIKING | | 310 | ADJ. CAP 'L1' | |
| REV | AUTH MAG | DATE DATUM | REVISION/REVISES INDEX REF./INDEXS/VERW | BY DEUR | 309 | L.E. SUPPORT | |
| | | | | CHKO DRAWINGS VERW/SINKTEKENINGE | 0.54 | | |
| | | | | | 705 | ADJ. CAP 'L4' | P.C.D. |

| | | | |
|--------------------|---------------|---|---|
| DRG.TEK REGISTR | | SOUTH AFRICA | ESCOM • EWKOM |
| | |  | LARGE EQUIPMENT SUPPORT CAP'L 2' ADJUSTABLE FIXING CENTRES |
| | | SUID AFRIKA | 146 TO 1010 x 146 TO 1010 M20 FIXINGS |
| CHKD NAGES | 24.9. 1974 | APPROVED A.C.BOLTON | GOEDGEKEUR |
| DRAWN GETEKEN | A.D.P. | 16.9. S.V.D.M., 1974 | |
| SCALE SKAAL | 1 : 10 | 24.9.74 | |
| | | | REV 1 |