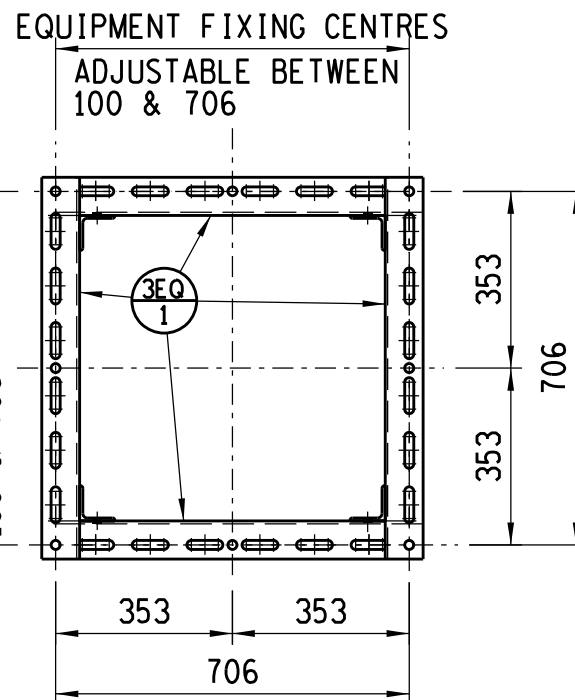
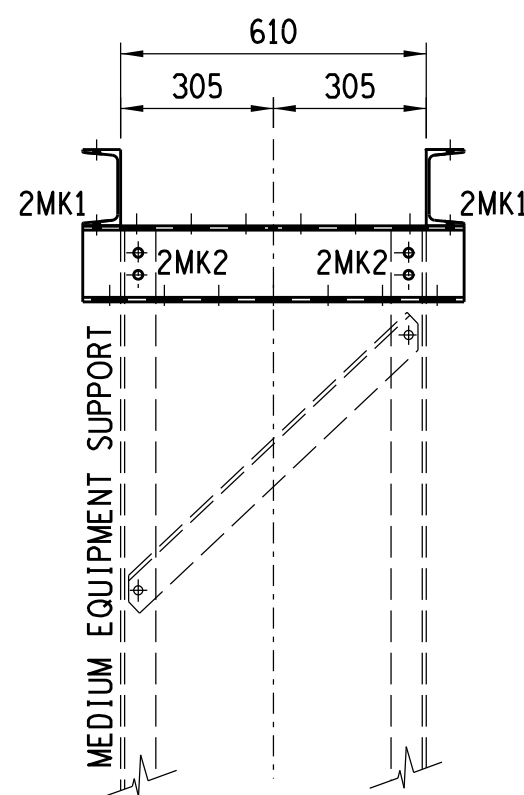


EQUIPMENT FIXING CENTRES
ADJUSTABLE BETWEEN
100 & 706

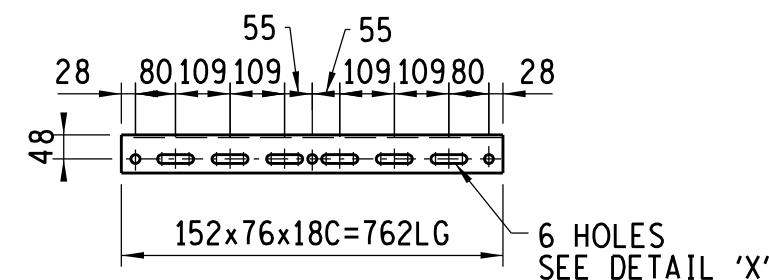


PLAN

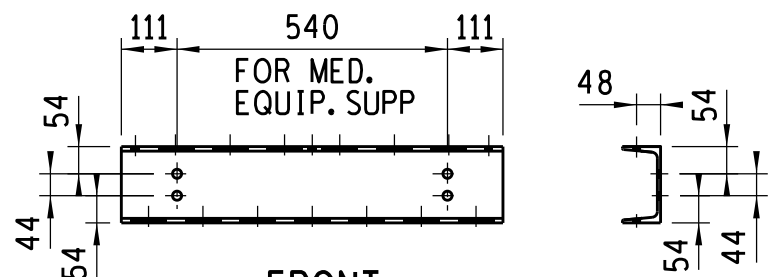


ELEVATION

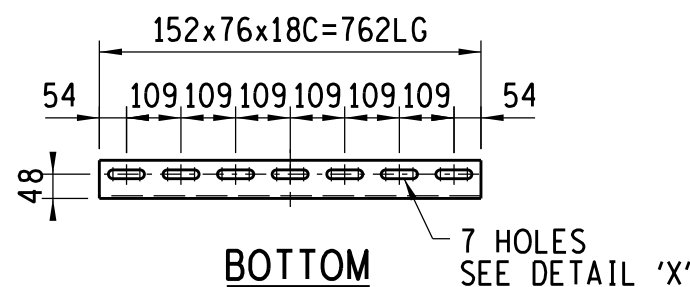
MASS IN kg		
STRUCTURE	BOLTS	TOTAL
55	2,2	57,2



PLAN

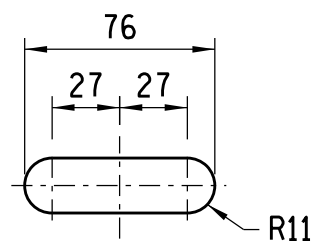


FRONT



BOTTOM

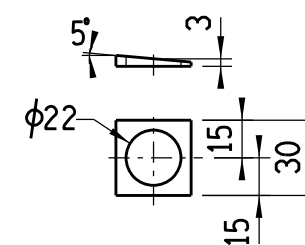
MK 3EQ 1 4-OFF



DETAIL 'X'
SCALE 1:5

BOLT SCHEDULE (STRENGTH GRADE 8.8)				
MK	DIA	LENGTH	No OFF	WASHER/BOLT
1	M 20	50	4	2 BEVELLED
2	M 16	40	8	1 FLAT

NOTES ON BOLTS:
1- BOLTS TO BE SUPPLIED WITH ONE NUT AND WASHER.
2- BOLTS ERECTED WITH HEAD TO INSIDE PREFERRED.
3- WASHER TO BE PLACED UNDER NUT.
4- ALL BOLTS TO BE GALVANIZED.



SPECIAL WASHER


SCALE 1:5

SPECIAL TAPERED STEEL HARDENED WASHER REQUIRED WHERE EQUIPMENT MANUFACTURER SPECIFY M16 FIXING BOLTS. FOR NUMBER OFF, REFER TO EQUIPMENT LAYOUT.

NOTES

1. ALL WELDING AND WELDING SYMBOLS SHALL CONFORM TO SABS 10044 PART 1 TO PART 5.
2. ALL STEELWORK TO BE GRADE S355JR, TO SANS 1431 AND HOT DIP GALVANISED TO SANS 121.
3. ALL WELDS TO BE SEAM WELDED.
4. ALL STEELWORK TO BE FABRICATED, ERECTED & LEVELLED, TO A TOLERANCE OF + OR - 1,5 mm.
5. ALL BOLTS SECURING EQUIPMENT TO THIS STRUCTURE, TO BE SUPPLIED BY EQUIPMENT CONTRACTOR.
6. H.D. BOLTS COMPLETE WITH NUT AND WASHER TO BE SUPPLIED BY CIVIL CONTRACTOR.
7. HOLES TO BE DIA. 18 FOR M16 GRADE 8.8 BOLTS HOT DIP GALVANIZED, UNLESS OTHERWISE STATED.
8. ALL MARKS TO BE STAMPED ONTO STEELWORK AND SHALL BE CLEARLY LEGIBLE AFTER GALVANISING.
9. ALL WORK SHALL COMPLY WITH SANS 1200 SERIES SPECIFICATIONS. SPECIFICATIONS: TOLERANCE/DEVIATION TO BE DEGREE OF ACCURACY II

297	CAP 'M4' M20 P.C.D
298	CAP 'M3' M16 P.C.D
306	CAP 'M1' M16
305	MED.SUPP. 4000mm HIGH
304	MED.SUPP. 3500mm HIGH
303	MED.SUPP. 3000mm HIGH
302	MED.SUPP. 2500mm HIGH

5	UPDATED TO STANDARD		AT	BH	AM	22/04/2021	301	MED.SUPP. 2150mm HIGH			
REV	REVISION DESCRIPTION		DRAWN	CHKD	AUTH	DATE	0.54/ REFERENCE DRAWINGS				
APPROVED BY		<div> Eskom</div>				Eskom Holdings SOC Ltd Reg No 2002/015527/30					
DJCS											
DATE 18/08/10		<div>MEDIUM EQUIPMENT SUPPORT CAP'M2' ADJUSTABLE FIXING CENTRES</div> <div>100 TO 706 x 100 TO 706 M20 FIXINGS</div> <div>©</div> <div>0.54/307</div>									
CHECKED BY											
DJCS											
DATE 18/08/10											
DRAWN BY											
PHD											
DATE 18/08/10		0.54/307						SHEET NUMBER		REVISION	
SCALE 1:15								0		5	