

A

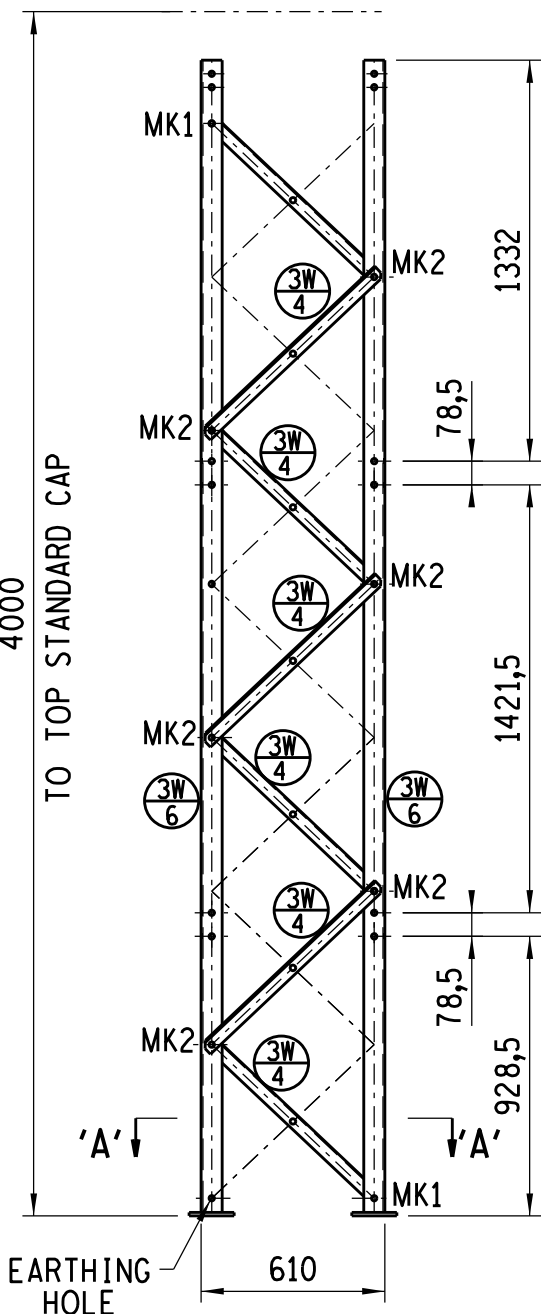
B

C

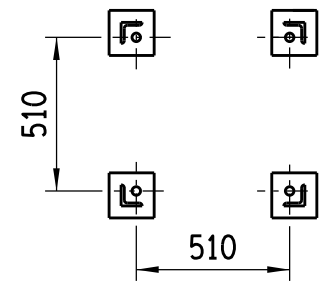
D

E

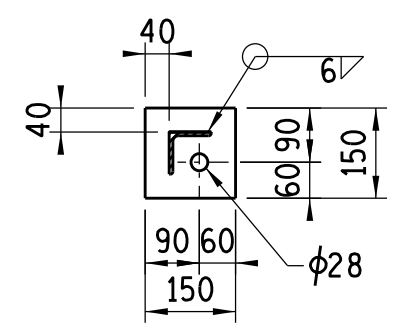
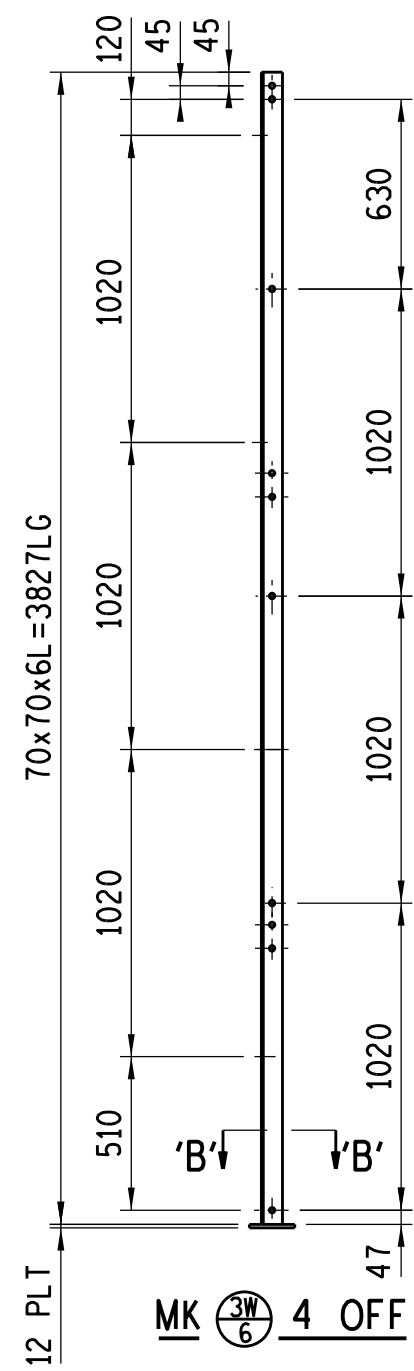
F



ELEVATION



SECTION 'A'-A'

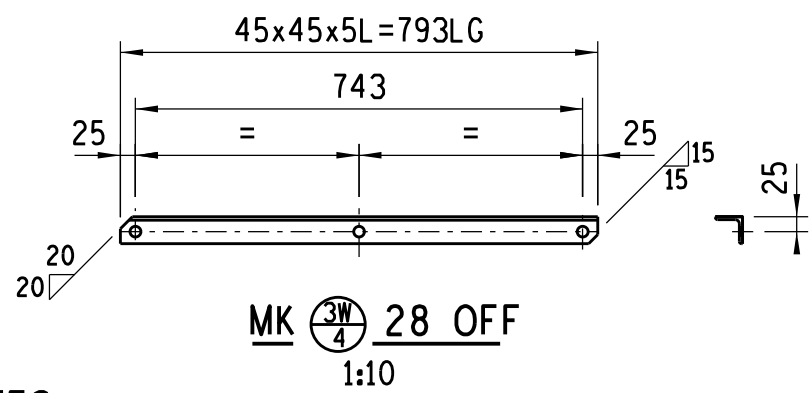


SECTION 'B'-B'
1:10

MASS IN kg		
STRUCTURE	BOLTS	TOTAL
181	4,2	185,2

BOLT SCHEDULE (STRENGTH GRADE 8.8)				
MK	DIA	LENGTH	No OFF	WASHER/BOLT
1	M 16	35	8	1 FLAT
2	M 16	40	24	1 FLAT

- NOTES ON BOLTS:
- 1- BOLTS TO BE SUPPLIED WITH ONE NUT AND WASHER.
 - 2- BOLTS ERECTED WITH HEAD TO INSIDE PREFERRED.
 - 3- WASHER TO BE PLACED UNDER NUT.
 - 4- ALL BOLTS TO BE GALVANIZED.



NOTES

1. ALL WELDING AND WELDING SYMBOLS SHALL CONFORM TO SABS 10044 PART 1 TO PART 5.
2. ALL STEELWORK TO BE GRADE S355JR, TO SANS 1431 AND HOT DIP GALVANISED TO SANS 121.
3. ALL WELDS TO BE SEAM WELDED.
4. ALL STEELWORK TO BE FABRICATED, ERECTED & LEVELLED, TO A TOLERANCE OF + OR - 1,5 mm.
5. ALL BOLTS SECURING EQUIPMENT TO THIS STRUCTURE, TO BE SUPPLIED BY EQUIPMENT CONTRACTOR.
6. H.D. BOLTS COMPLETE WITH NUT AND WASHER TO BE SUPPLIED BY CIVIL CONTRACTOR.
7. HOLES TO BE DIA.18 FOR M16 GRADE 8.8 BOLTS HOT DIP GALVANIZED, UNLESS OTHERWISE STATED.
8. ALL MARKS TO BE STAMPED ONTO STEELWORK AND SHALL BE CLEARLY LEGIBLE AFTER GALVANISING.
9. ALL WORK SHALL COMPLY WITH SANS 1200 SERIES SPECIFICATIONS. SPECIFICATIONS: TOLERANCE/DEVIATION TO BE DEGREE OF ACCURACY II

8829	APPLICATION GUIDE
4358	MED EQP FND
306/307	ADJUSTABLE/TOP CAP
308	FOUNDATION
0.54/	REFERENCE DRAWINGS

3	UPDATED TO STANDARD.		A.T		AM	13 - 10 - 2021	308	FOUNDATION	
REV	REVISION DESCRIPTION		DRAWN	CHKD	AUTH	DATE	0.54/	REFERENCE DRAWINGS	
APPROVED BY			 Eskom			Eskom Holdings SOC Ltd Reg No 2002/015527/30			
P.PEARCE									
DATE 27/08/73			MEDIUM EQUIPMENT SUPPORT 4000mm HIGH						
CHECKED BY									
P.J.G									
DATE 27/08/73									
DRAWN BY									
R.J.C			©						
DATE 27/08/73									
SCALE 1:25			0.54/305				SHEET NUMBER		REVISION
							0		3