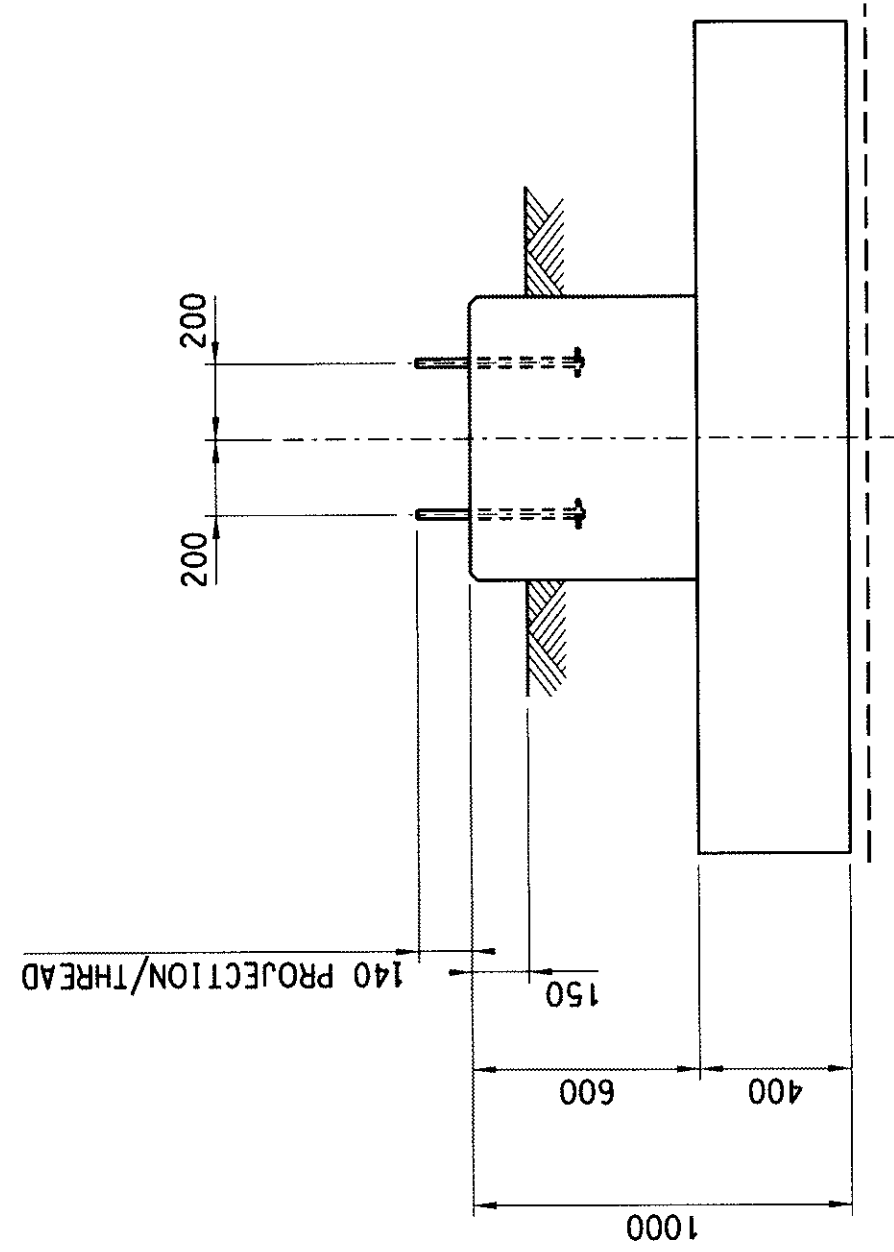
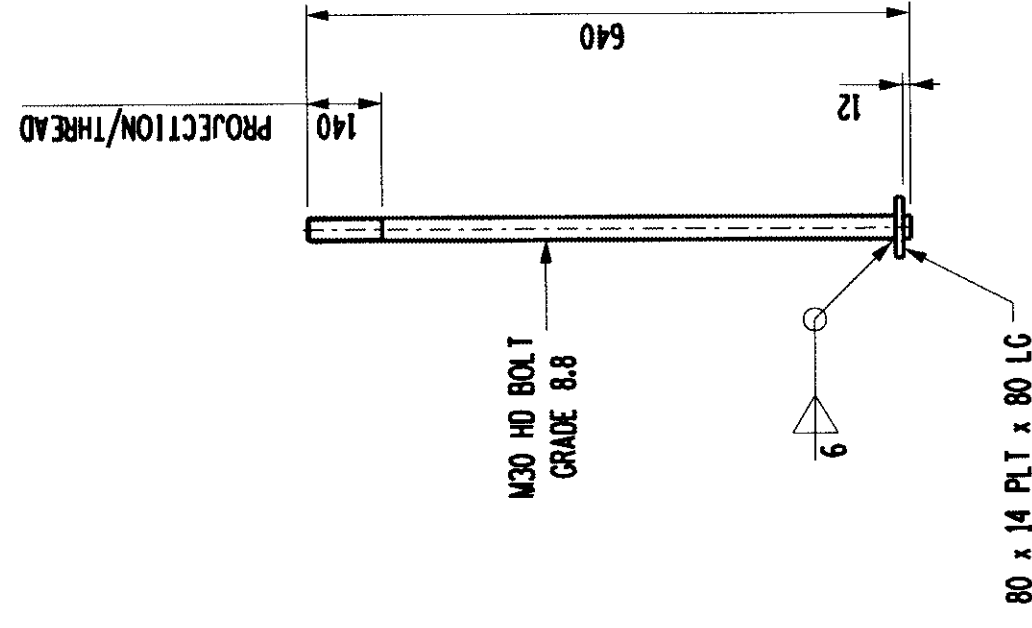


PLAN - CONCRETE

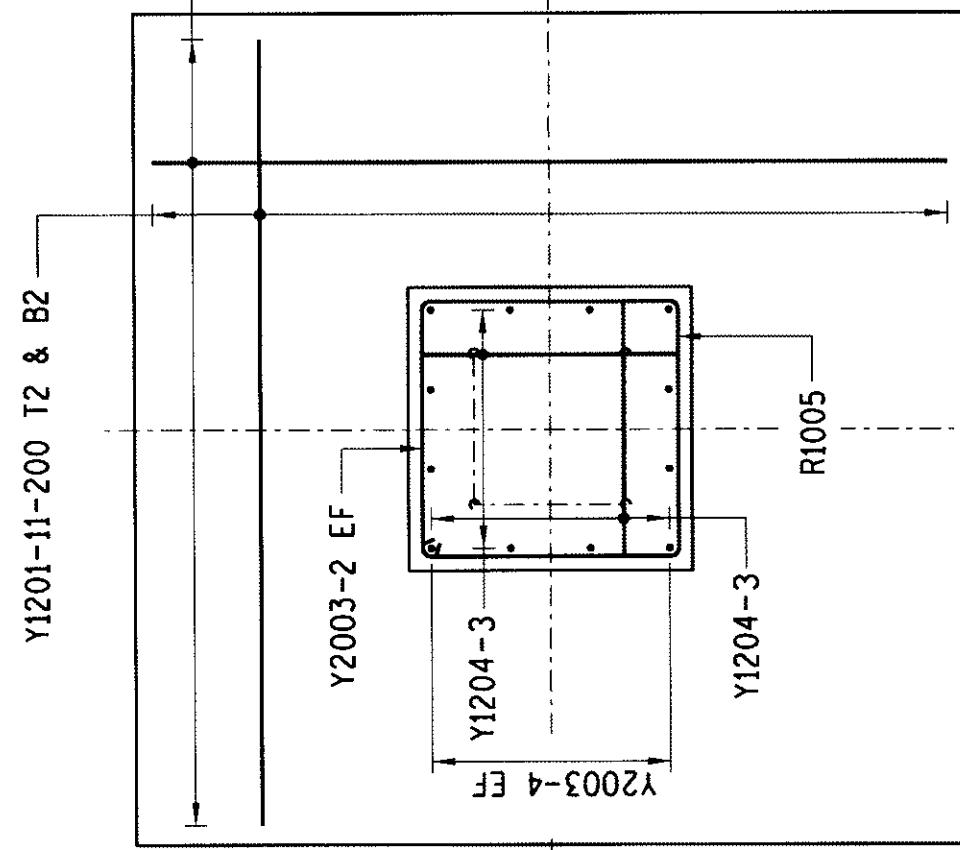


SIDE ELEVATION - CONCRETE

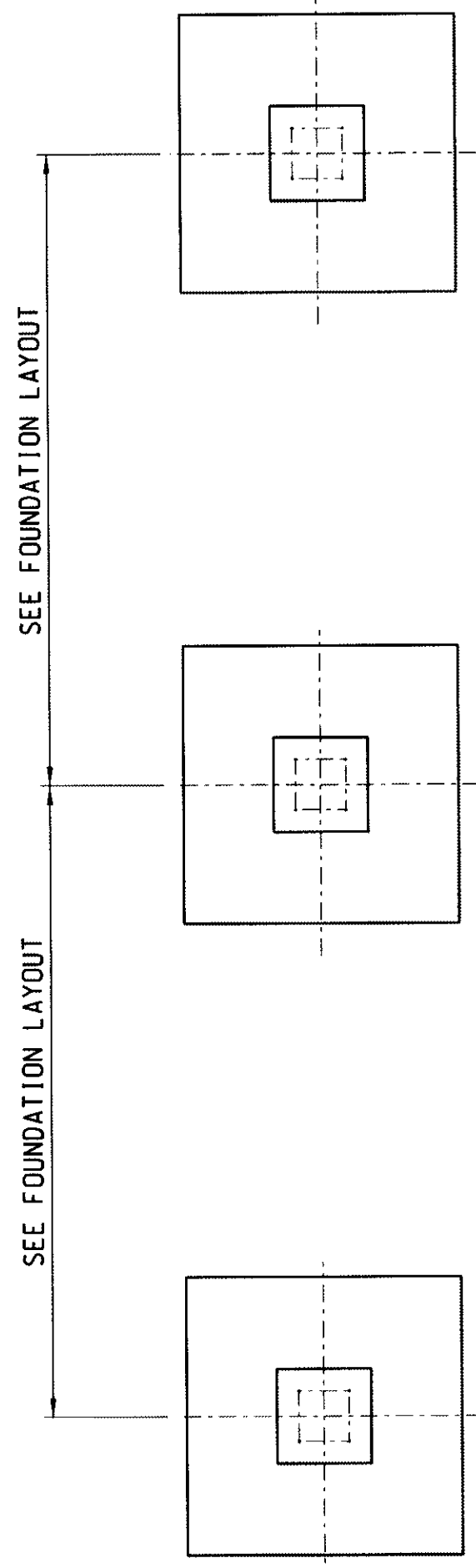


H.D. BOLT DETAIL

8 OFF REQUIRED
(MASS OF 1 BOLT INCLUDING NUT
& WASHER = 3.2 kg)



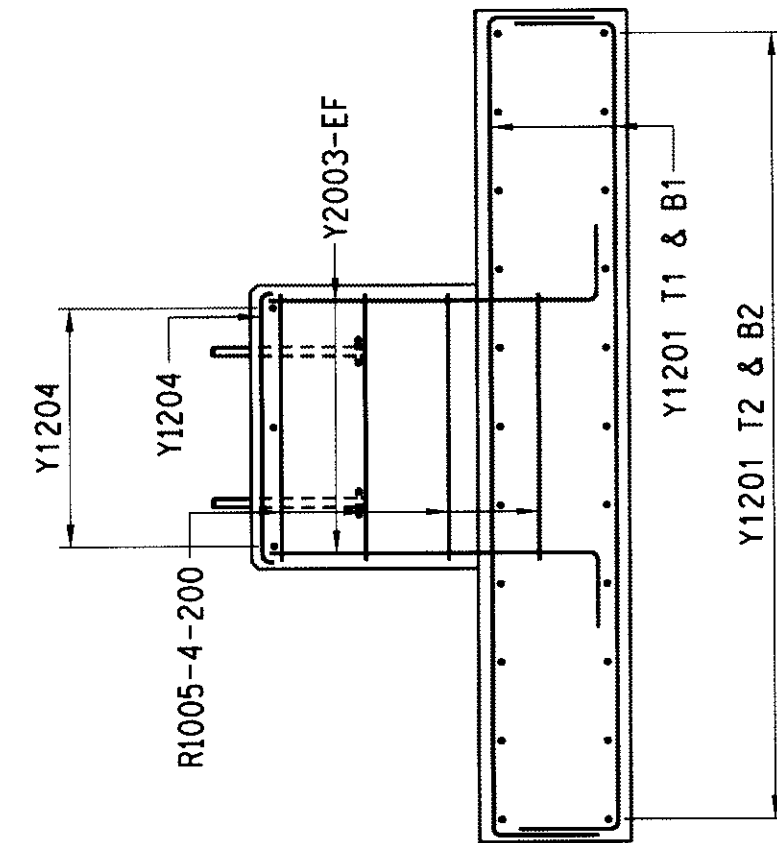
PLAN - REINFORCEMENT

[illegible]


FOUNDATION LAYOUT

NOTES :

- 1.) CONCRETE STRENGTH AT 28 DAYS/STONE SIZE :BLINDING = 15/19
FOUNDATION = 25/19
- 2.) MIN. COVER TO REINFORCEMENT TO BE 50mm
- 3 a.) HD BOLTS (GRADE 4.8) SUPPLIED BY CIVIL CONTRACTOR COMPLETE
WITH NUTS & WASHERS TO BE HOT DIPPED GALVANISED TO SANS 121
- b.) THREAD TO BE OVER-CUT TO SANS 121 TO ALLOW FOR THICKNESS
OF GALVANISING
- 4.) FORMWORK TO EXTEND AT LEAST 150mm BELOW GROUND LEVEL
- 5.) ALL WELDING AND WELDING SYMBOLS TO SANS 10044
- 6.) STEEL TEMPLATE TO BE USED FOR SETTING OUT OF HD BOLTS
- 7.) 30 MPa FLOWABLE NON-SHRINK GROUT UNDER BASE PLATES ONLY
IF REQUIRED
- 8.) ALL TOP EDGES TO HAVE 20 x 20 CHAMFER
- 9.) ALL WORK TO BE IN ACCORDANCE WITH SANS 1200 SERIES OF SPECIFICATIONS
- 10.) CONCRETE FINISH : SMOOTH OFF SHUTTER FINISH
SIDES OF FOUNDATION – WOOD FLOAT FINISH
- 11.) THESE FOUNDATIONS HAVE BEEN DESIGNED TO FOUND ON COMPETENT
FOUNDING MATERIAL. IN ALL CASES COMPLEXTY OF FOUNDING MATERIAL
MUST BE ESTABLISHED BY A QUALIFIED GEO-TECHNICAL ENGINEER



SIDE ELEVATION - REINFORCEMENT

2		BASE AND NO BOLT MODIFIED	BN	13/01/14	8003	SUPPORT
REV		REVISION DESCRIPTION	DRAWN	CHKD	DATE	REFERENCE DRAWINGS
APPROVED BY			 Eskom HOLDINGS LIMITED REG No 2002/015521/06			
0		GENERAL				
DATE		14/07/2013				

 Eskom

REG No 2002/015527/06

275 kV ABB CIRCUIT BREAKER FOUNDATION DETAILS

DATE	13/02/2012	0.54/8280	SHEET NUMBER	0	REVISION	2
SCALE 1:20						