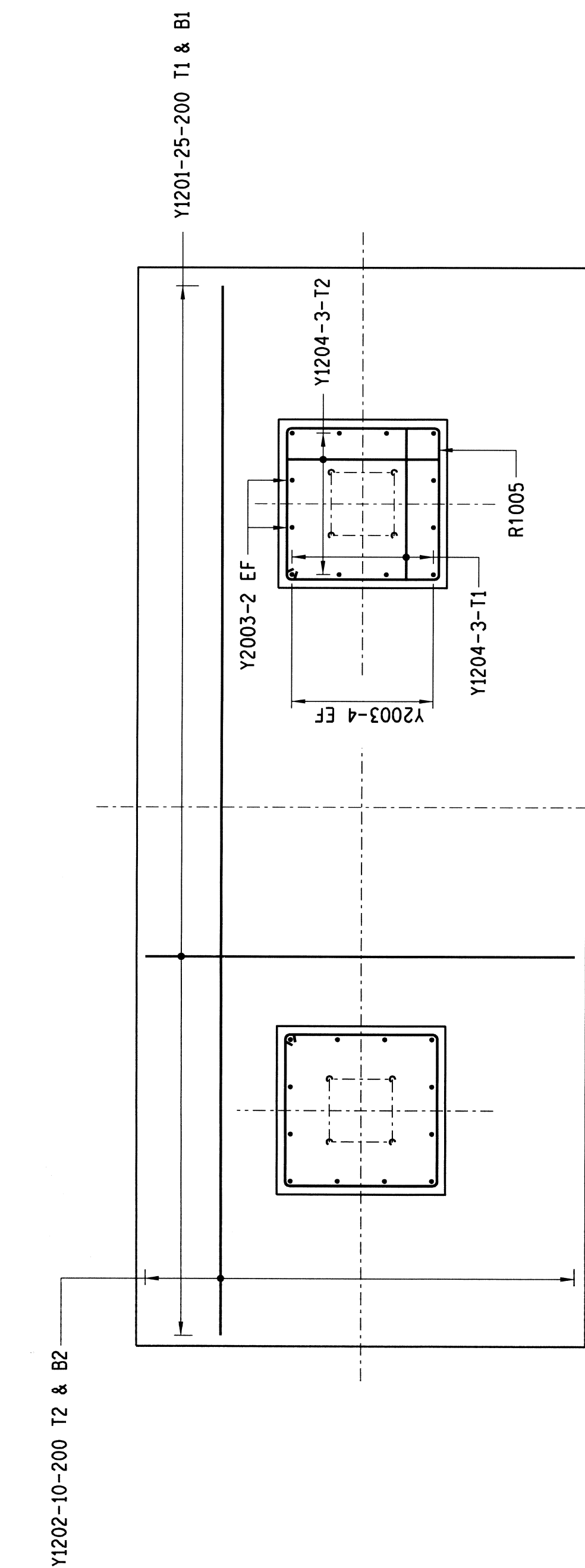
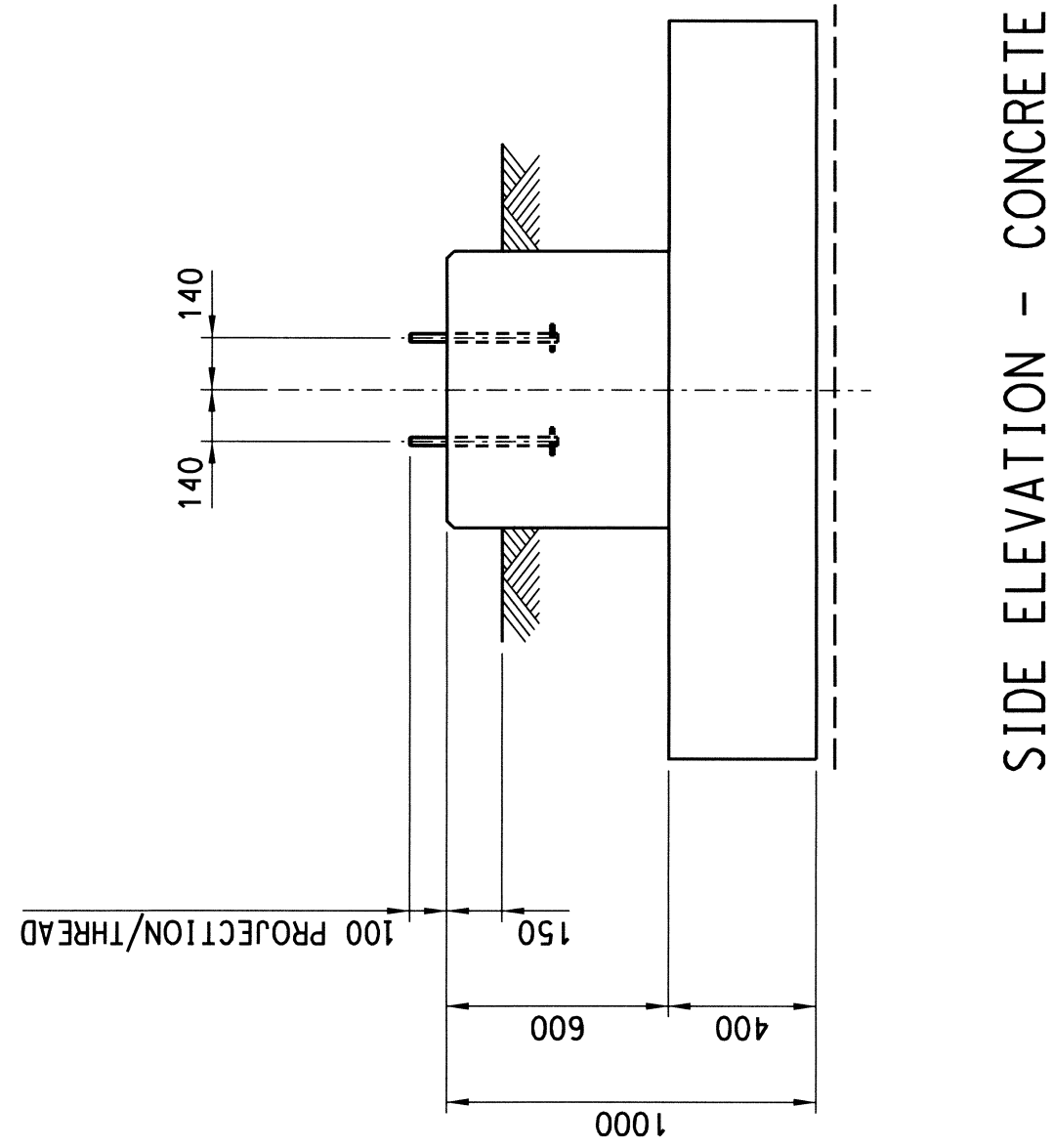


PLAN - CONCRETE

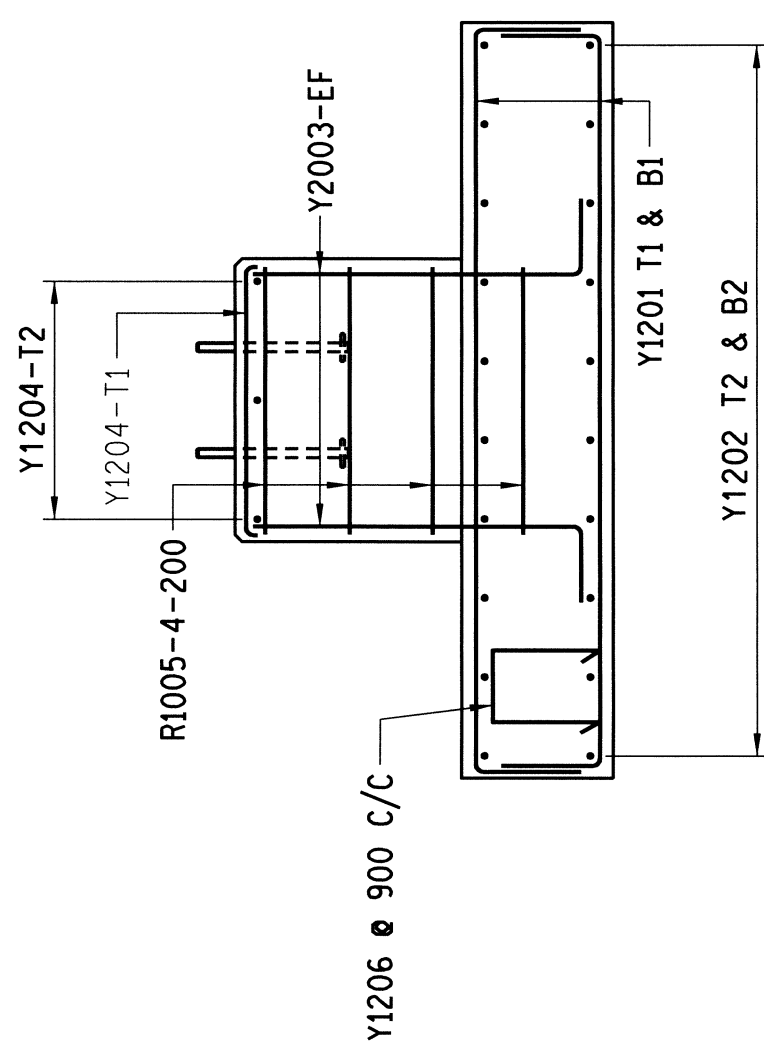


PLAN - REINFORCEMENT

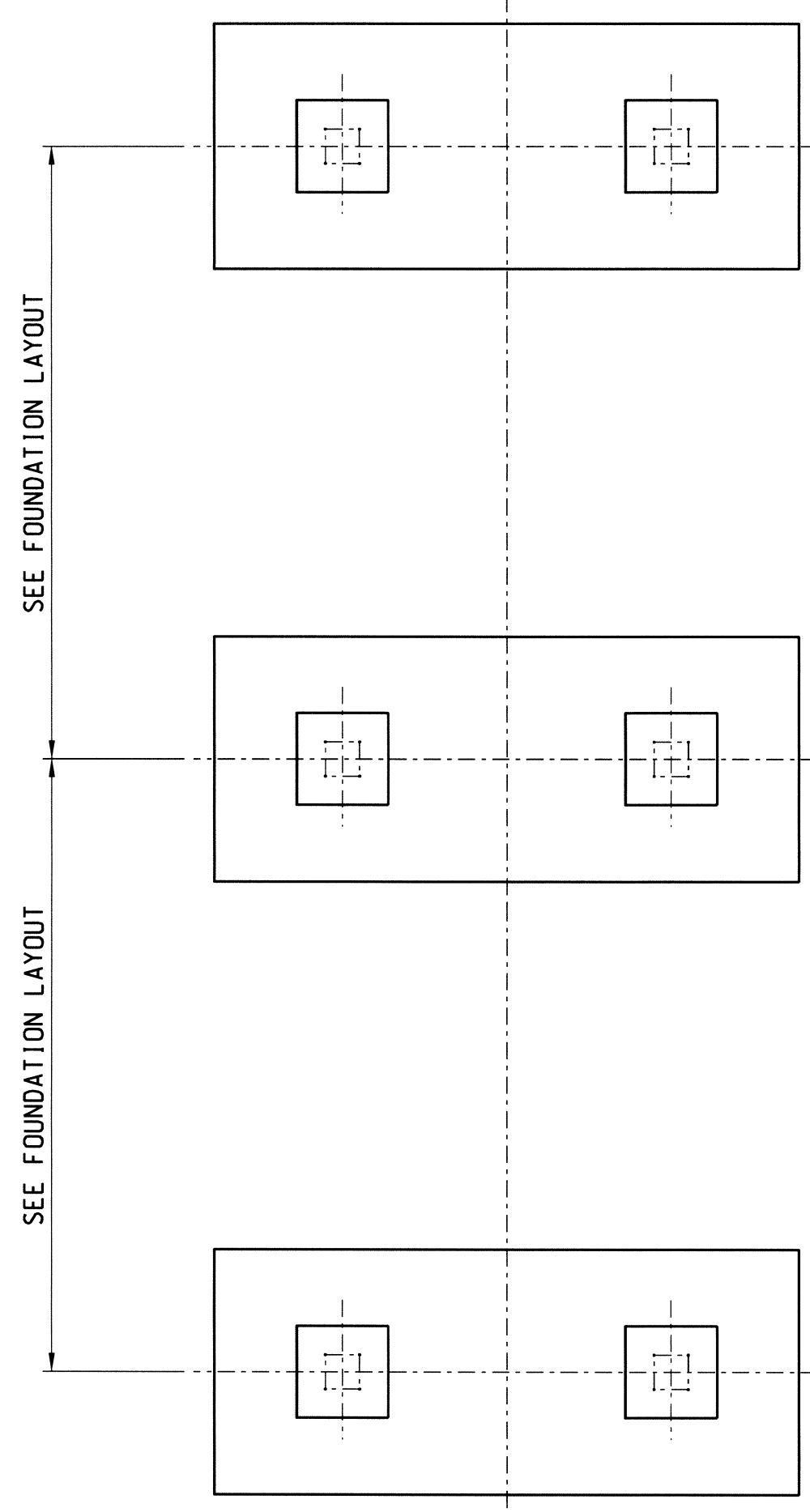
ITEM AND No OFF	BARS					SHAPE CODE	STANDARD SHAPES BENDING DIMENSIONS												
	Y or R	∠ or C	MK.	No OFF PER ITEM	CUTTING LENGTH mm		TOTAL LENGTH m	A		B		C		D		E		R	
FOR 1 FOUNDATION	Y	12	01	50	2350		38	250	1900										
	Y	12	02	20	5150		38	250	4700										
	Y	20	03	24	1300		37	870											
	Y	12	04	12	900		35	630											
	R	10	05	4	2800		60	850	650										
	Y	12	06	15	1400		83	300	250	300									



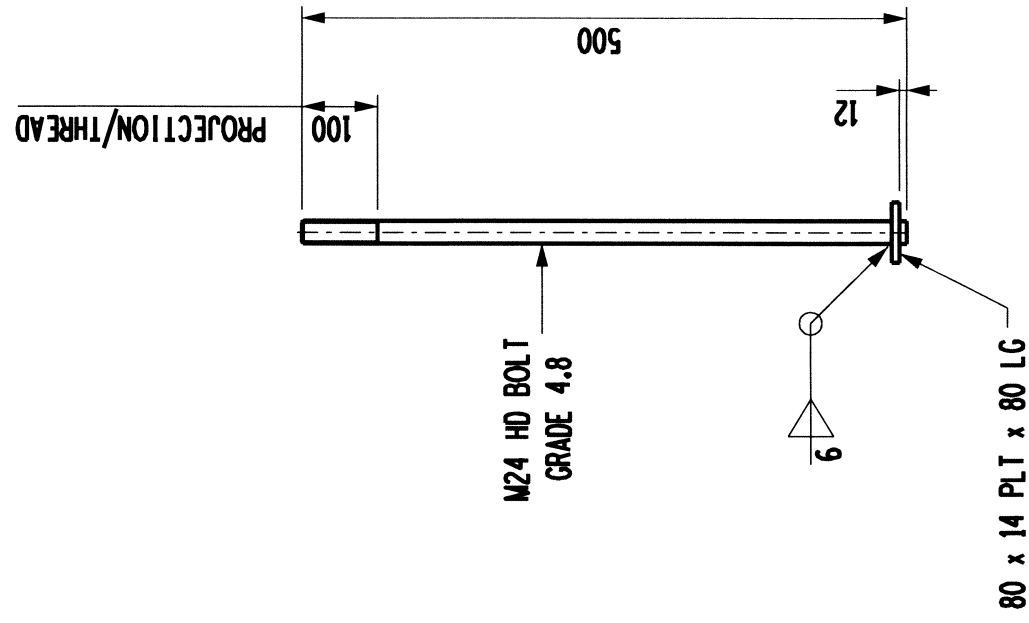
SIDE ELEVATION - CONCRETE



SIDE ELEVATION - REINFORCEMENT



⚠ FOUNDATION LAYOUT




H.D. BOLT DETAIL

8 OFF REQUIRED
(MASS OF 1 BOLT INCLUDING NUT
& WASHER = 2,36 kg)

NOTES ::

- 1.) CONCRETE STRENGTH AT 28 DAYS/STONE SIZE-BINDING = 15/19
FOUNDATION = 25/19
- 2.) MIN. COVER TO REINFORCEMENT TO BE 50mm
- 3 a.) HD BOLTS (GRADE 4.8) SUPPLIED BY CIVIL CONTRACTOR COMPLETE
WITH NUTS & WASHERS TO BE HOT DIPPED GALVANISED TO SANS 121
- b.) THREAD TO BE OVER-CUT TO SANS 121 TO ALLOW FOR THICKNESS
OF GALVANISING
- 4.) FORMWORK TO EXTEND AT LEAST 150mm BELOW GROUND LEVEL
- 5.) ALL WELDING AND WELDING SYMBOLS TO SANS 10044
- 6.) STEEL TEMPLATE TO BE USED FOR SETTING OUT OF HD BOLTS
- 7.) 30 MPa FLOWABLE NON-SHRINK GROUT UNDER BASE PLATES ONLY
IF REQUIRED
- 8.) ALL TOP EDGES TO HAVE 20 x 20 CHAMFER
- 9.) ALL WORK TO BE IN ACCORDANCE WITH SANS 1200 SERIES OF SPECIFICATIONS
- 10.) CONCRETE FINISH - SMOOTH FLOAT FINISH
SIDES OF FOUNDATION - WOOD FLOAT FINISH
- 11.) THESE FOUNDATIONS HAVE BEEN DESIGNED TO FOUND ON COMPETENT
FOUNDING MATERIAL. IN ALL CASES COMPETENCY OF FOUNDING MATERIAL
MUST BE ESTABLISHED BY A QUALIFIED GEO-TECHNICAL ENGINEER

1	NOTE AND FOUNDATION LAYOUT ADDED	BY <i>A</i>	22/03/13	TEST	SUPPORT 4.2m PHASE
REV	REVISION DESCRIPTION	DRAWN/CHG	DATE	DATE	SUPPORT 6.1m PHASE
APPROVED BY			REFERENCE DRAWINGS		
 Eskom			ESKOM HOLDINGS LIMITED		
DATE 14/03/2012 CHECKED BY			REC No 2002/015527/06		
P DOHLE DATE 14/03/2012 DRAWN BY			275 kV ALSTOM ISOLATOR FOUNDATION DETAILS		
B HALEE DATE 06/02/2012					
SCALE 1:20					
DATE 06/02/2012			SHEET NUMBER 0		REVISION 1