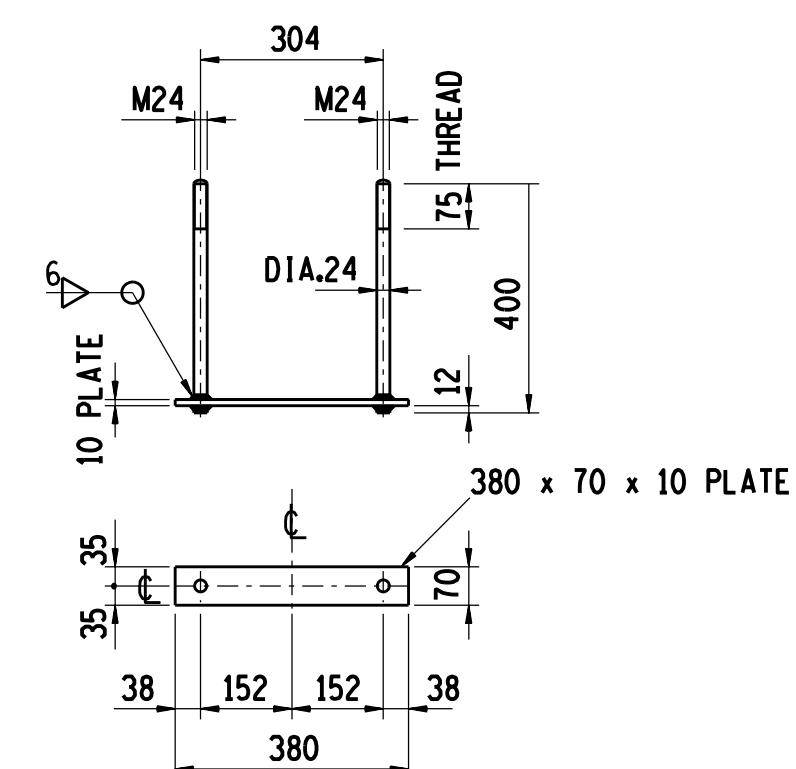
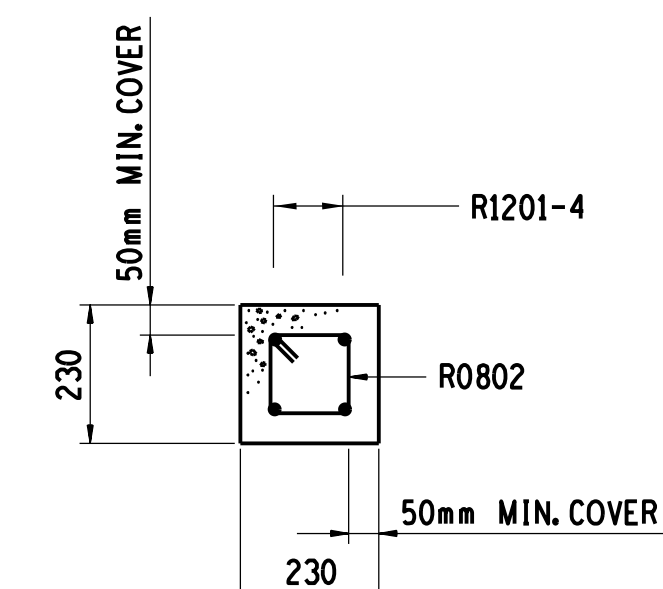
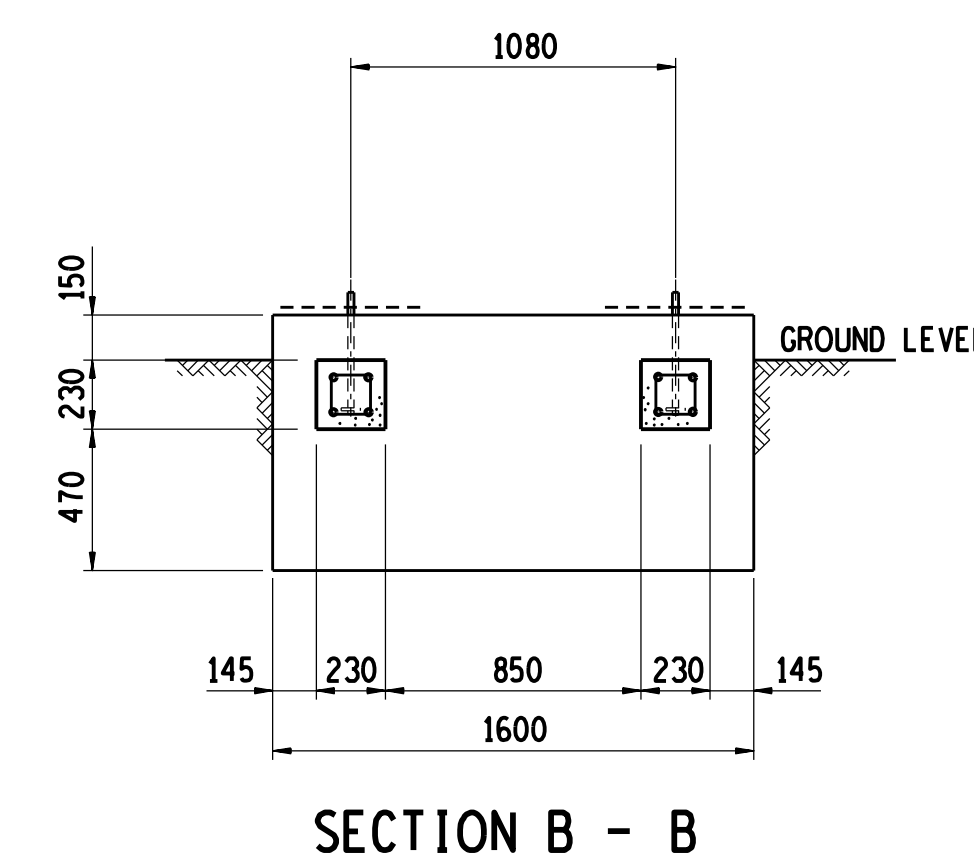


ITEM AND No OFF	BARS						SHAPE CODE	STANDARD SHAPES BENDING DIMENSION mm			
	Y OR R	DIA.	MK.	No OFF		CUTTING LENGTH mm		TOTAL LENGTH m	A	B	C
				PER ITEM	TOTAL						
	R	12	01	8		5150		33	4800		
	R	8	02	32		750		60	130	130	
	Y	10	03	18		2100		38	750	640	
	Y	10	04	8		2900		38	740	1480	
	Y	10	05	12		1500		20	1500		
	Y	10	06	12		950		35	660		
	Y	10	07	22		900		35	640		
	Y	10	08	8		1750		35	1480		




DETAIL OF DIA.24 H.D. BOLT
(4 REQUIRED PER FOUNDATION.)

MASS OF ONE H.D. BOLT ASSEMBLY

NOTES:

1. CONCRETE STRENGTH AT 28 DAYS/STONE SIZE: BLINDING = 15/19
FOUNDATIONS = 25/19
2. MIN. CONCRETE COVER TO REINFORCEMENT = 50 mm.
3. a.) H.D.BOLTS SUPPLIED BY CIVIL CONTRACTOR COMPLETE WITH NUTS AND WASHERS TO BE HOT DIPPED GALVANISED TO SABS 763
- b.) THREADS OF NUTS TO BE OVER-CUT TO SABS 763 TO ALLOW FOR THICKNESS OF GALVANISING
4. FORMWORK TO EXTEND AT LEAST 150mm BELOW GROUND LEVEL.
5. ALL WELDING AND WELDING SYMBOLS TO S.A.B.S. 044
6. STEEL TEMPLATE TO BE USED FOR SETTING H.D.BOLTS
7. 30MPa FLOWABLE NON-SHRINK GROUT UNDER BASE PLATE ONLY IF REQUIRED
8. ALL TOP EDGES OF CONCRETE TO HAVE 20x20 CHAMFERS
9. ALL WORK TO BE IN ACCORDANCE WITH SABS 1200 SERIES SPECIFICATION
10. CONCRETE FINISH : TOP OF FOUNDATION - WOOD FLOAT FINISH
: SIDES - SMOOTH OFF SHUTTER FINISH

7699	SUPPORT
7698	SUPPORT
7703	SUPPORT
7702	SUPPORT
7692	SUPPORT
7689	SUPPORT
7706	SUPPORT
7705	SUPPORT
7701	SUPPORT
7700	SUPPORT

0	FIRST ISSUE					1701	SUPPORT
REV	REVISION DESCRIPTION	DRAWN	CHKD	AUTH	DATE	0.54/	REFERENCE DRAWINGS
APPROVED BY		 Eskom				ESKOM HOLDINGS LIMITED	
D. SENEKAL						REG No 2002/015527/06	
DATE	14/02/2012	<div style="text-align: center;"> <p>132kV ACTOM ISOLATOR (3m PHASE)</p> <p>FOUNDATION DETAILS</p> </div>					
CHECKED BY							
D.J.C.							
DATE	14/02/2012						
DRAWN BY		<div style="text-align: center;"> <p>0.54/7512</p> </div>					
B. HAJEE							
DATE	02/02/2012						
SCALE 1:25						SHEET NUMBER	REVISION
						0	0