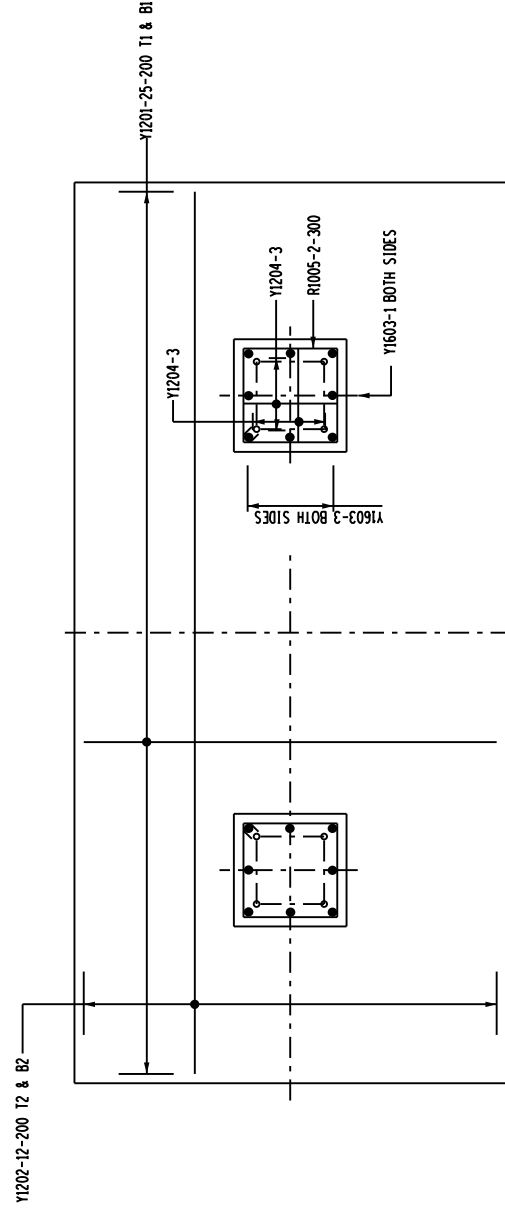
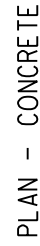
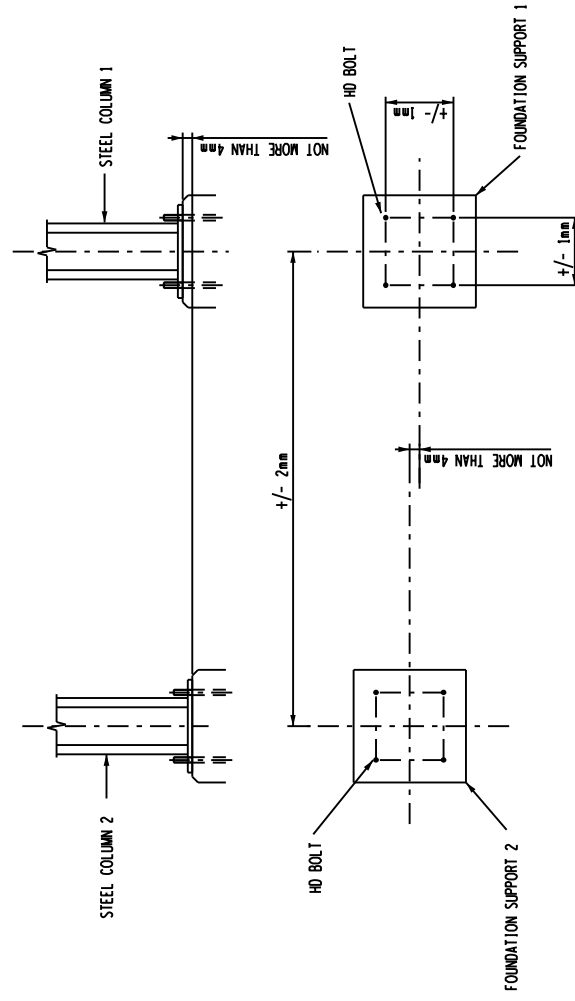


SIDE ELEVATION - CONCRETE



PLAN - REINFORCEMENT




PLAN
TOLERANCE FOR HD BOLTS & TOP OF CONCRETE PLINTHS

NOTES :

- 1.) CONCRETE STRENGTH AT 28 DAYS/STONE SIZE : BLINDING = 15/19
FOUNDATION = 25/19
- 2.) MIN. COVER TO REINFORCEMENT TO BE 50mm
- 3 a.) HD BOLTS (GRADE 8.8) SUPPLIED BY CIVIL CONTRACTOR COMPLETE WITH NUTS & WASHERS TO BE HOT DIPPED GALVANISED TO SANS 121
- b.) THREAD TO BE OVER-CUT TO SANS 121 TO ALLOW FOR THICKNESS OF GALVANISING
- 4.) FORMWORK TO EXTEND AT LEAST 150mm BELOW GROUND LEVEL
- 5.) ALL WELDING AND WELDING SYMBOLS TO SANS 10044
- 6.) STEEL TEMPLATE TO BE USED FOR SETTING OUT OF HD BOLTS
- 7.) 30 MPa FLOWABLE NON-SHRINK GROUT UNDER BASE PLATES ONLY IF REQUIRED
- 8.) ALL TOP EDGES TO HAVE 20 x 20 CHAMFER
- 9.) ALL WORK TO BE IN ACCORDANCE WITH SANS 1200 SERIES OF SPECIFICATIONS
- 10.) CONCRETE FINISH : TOP OF FOUNDATION – SMOOTH OFF FINISH
SIDES OF FOUNDATION – WOOD FLOAT FINISH
- 11.) THESE FOUNDATIONS HAVE BEEN DESIGNED TO FOUND ON COMPETENT FOUNDING MATERIAL. IN ALL CASES THE COMPETENCY OF FOUNDING MATERIAL MUST BE ESTABLISHED BY A QUALIFIED GEO-TECHNICAL ENGINEER

[illegible]

3	NOTE 3a REVISED	PHD	DBN	DUCS	09/09/14
2	TOLERANCE FOR HD BOLTS & TOP OF CONCRETE ADDED	PHD	DUCS	DUCS	18/11/13
1	HB BOLT DETAIL REVISED	PHD	BH	DUCS	14/10/13
				0.54/6034	SUPPORT
REV	REVISION DESCRIPTION	BY	CHD	AUTH	DATE
					REFERENCE DRAWINGS

APPROVED BY D.SENEKAL	 ESKOM HOLDINGS LIMITED REG NO. 2002/015527/06	SHEET NUMBER	REVISION
DATE 14/02/2012		0	3
CHECKED BY P.DOYLE			

DATE 14/02/2012	132kV CIRCUIT BREAKER	FOUNDATION LAYOUT AND DETAIL (ABB)
DRAWN BY B HAJEE		
DATE 02/02/2012		

SCALE AS SHOWN	0.54/7511
----------------	-----------