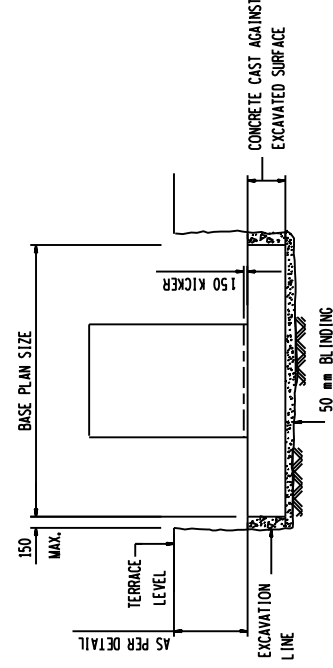


## SECTION C-C.

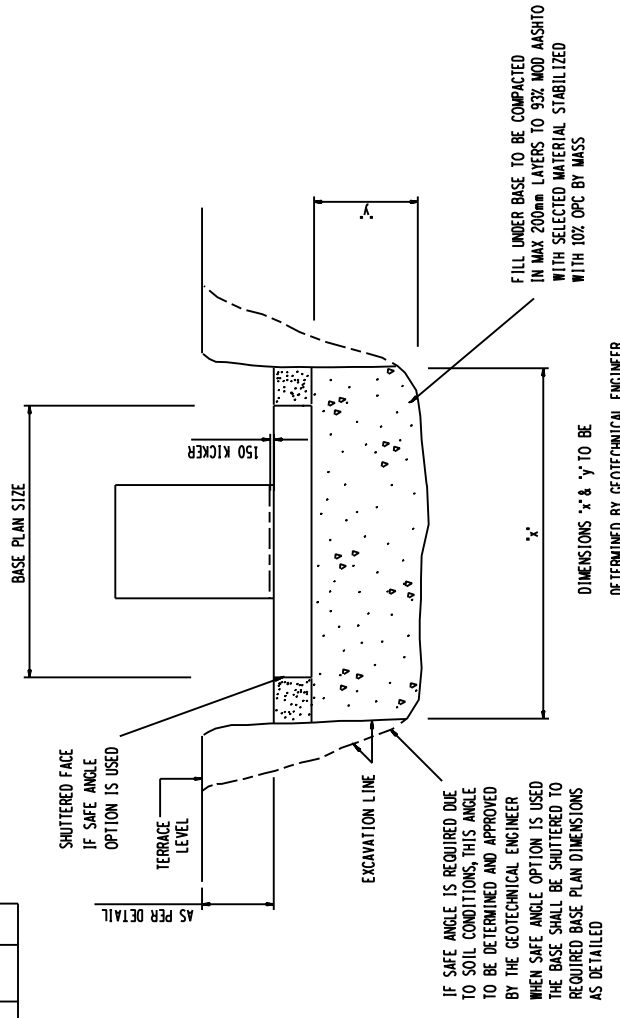
ITEM AND No OFF	BARS					SHAPE CODE	STANDARD SHAPES BENDING DIMENSIONS							
	Y OF	1 ID	MM.	PER ITEM	No OFF TOTAL		CUTTING LENGTH mm	TOTAL LENGTH mm	A	B	C	D	E	R
24m FOUNDATION. 1 OFF.	Y	12	01		84	4700	38	360	4040					
	Y	25	02		16	1550	37	1260						
	R	08	03	2	3550	2	60	840						
	R	08	04	8	2450	60	280	840						
	Y	12	05		16	1800	83	400	355	400				

## CONCRETE & REINFORCEMENT DETAILS - 24m MAST.



## DETAIL 1

COMPETENT FOUNDING MATERIAL FOUND AT A LEVEL  
NOT EXCEEDING 50 mm BELOW U/S OF  
PLINTH BASE AS DETAILED




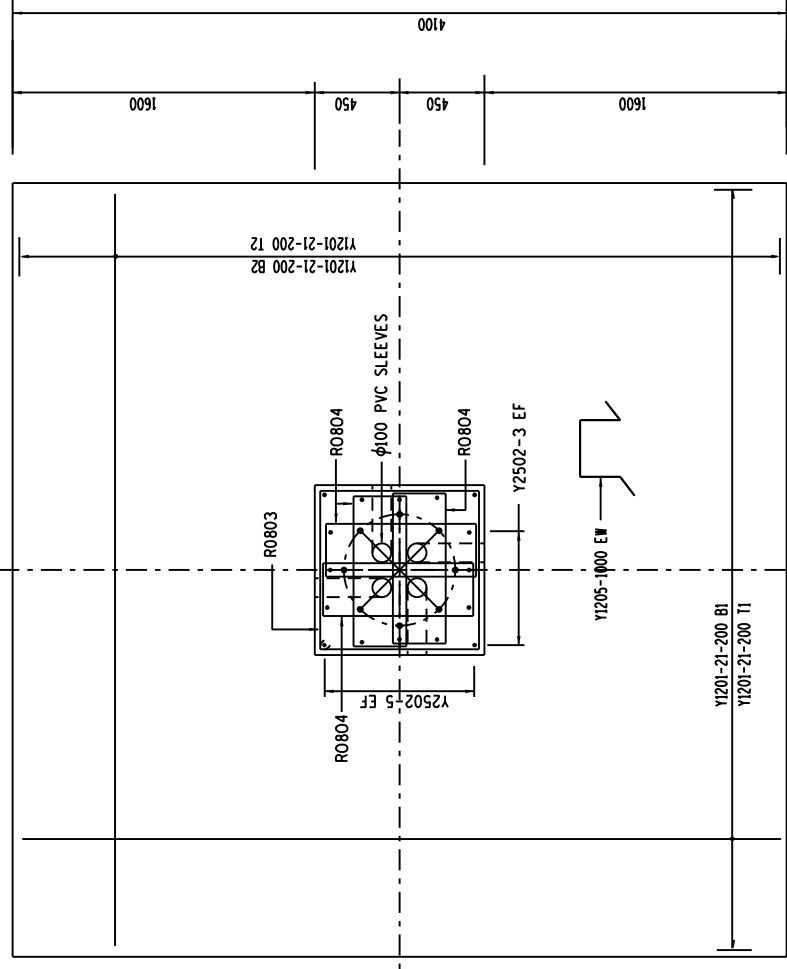
DETAIL 2

**COMPETENT FOUNDING MATERIAL NOT  
FOUND AT LEVEL AS PER DETAIL**

## EXCAVATION DETAILS

	PWD	DON	D/S	30/12/76
9	NO B.O.I. & NOTES REVISED	ARM	D/S	4/1/73
8	DIG. SERIAL NUMBER REMOVED	ARM	D/S	1/10/79
7	REDUCTION AND TITLE CHANGED	ARM	D/S	1/5/79
6	REINFORCEMENT REVISED	DON	D/S	2/2/79
5	NAL.B.O.I. LAYOUTS REVISED	ARM	D/S	30/6/79
4	NAL.B.O.I. LAYOUTS REVISED & NOTE & INDEXED.	ARM	D/S	27/7/79
3	MEMBERS O.D. & DA REVISED ON 2nd MAST.	A.O.	S/S N/A/E/L	4656
2	TITLES CHANGED	A.O.	A.T.O. N/A/E/L	4657
1	CABLE SLEEVES DETAILS ALTERED.	HBC		4658
REV	CABLE DESCRIPTION	CHD	AUTH	DATE
				O 54 / REFERENCE DRAWINGS

DESIGN APPROVED	 <b>Eskom</b> Transmission	24m LIGHT MAST  LAYOUT AND DETAIL OF FOUNDATION	SHEET NUMBER  0	REVISION  9
IN W/D ENGINE				
DATE 24/11/24				
DESIGN CHECKED				
DATE 24/1/24	©	0.54/4659		
DROWN BY				
A.D.				
DATE 24/1/24				
SCALE 1:20				



PLAN VIEW