

1 2 3 4 5 6 7 8 9 10 11 12

A

B

C

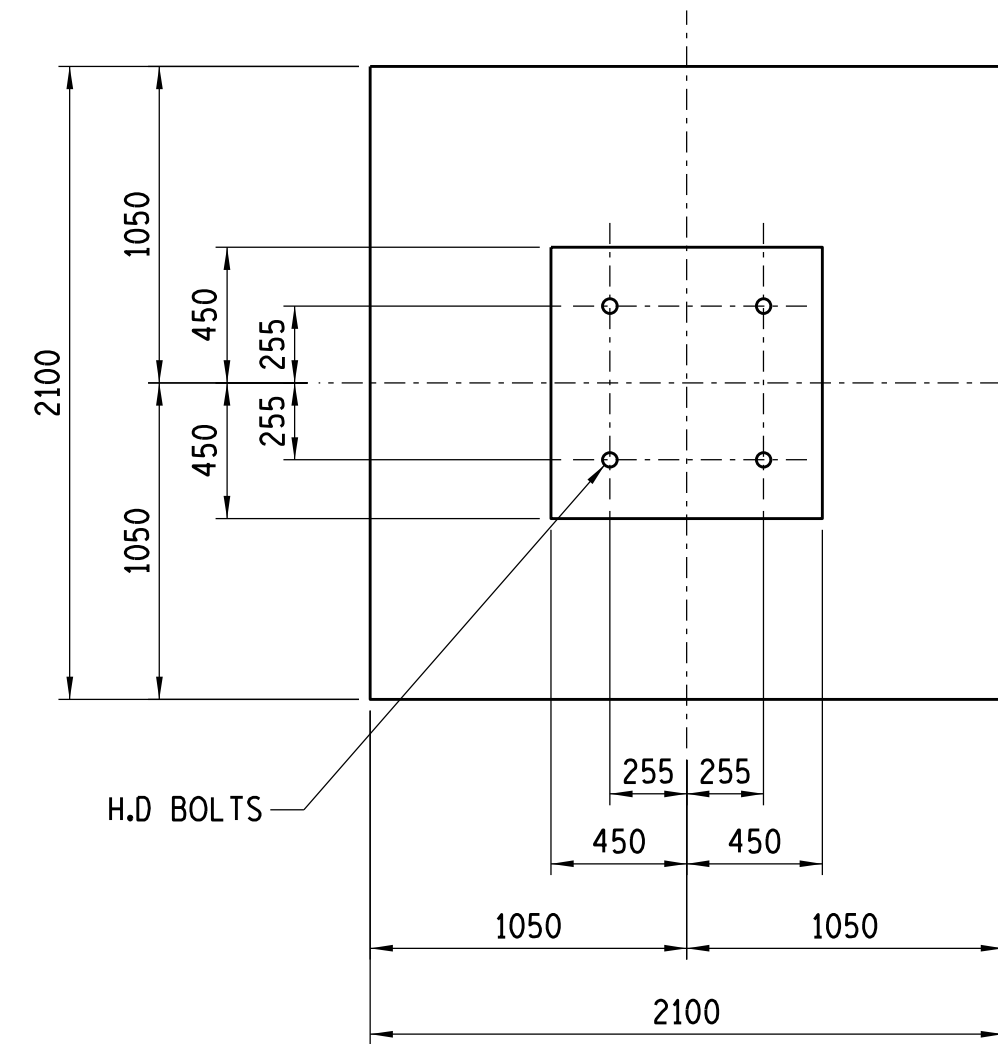
D

E

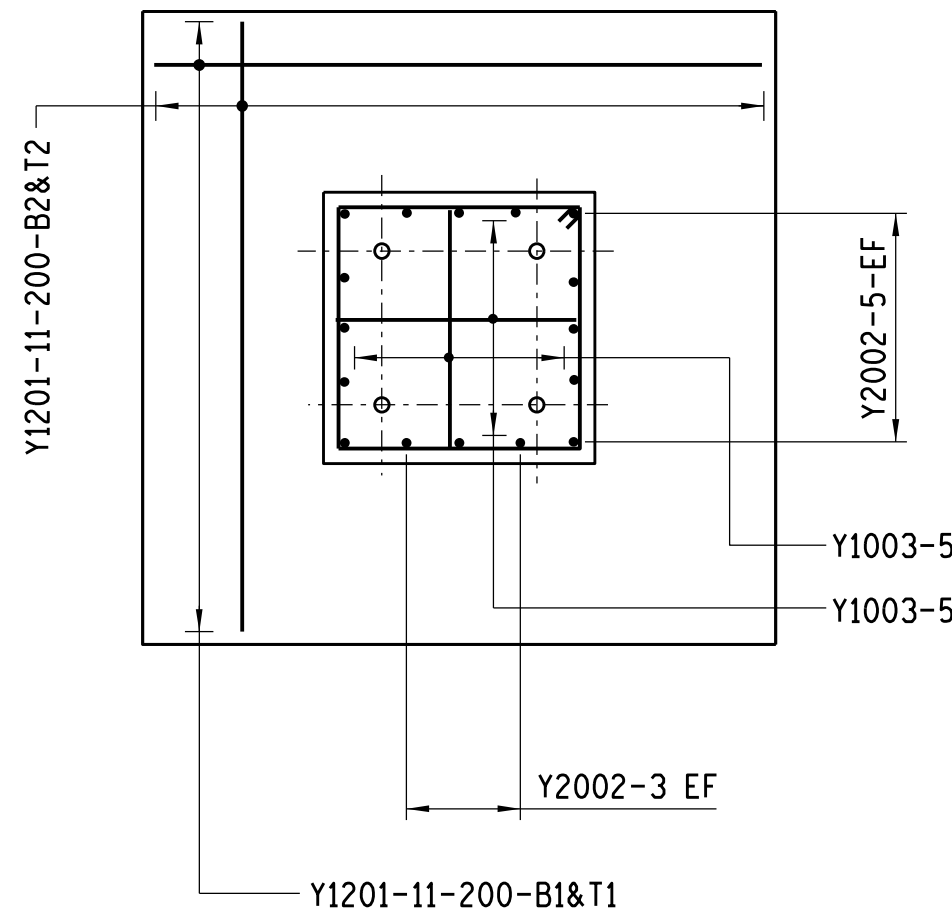
F

G

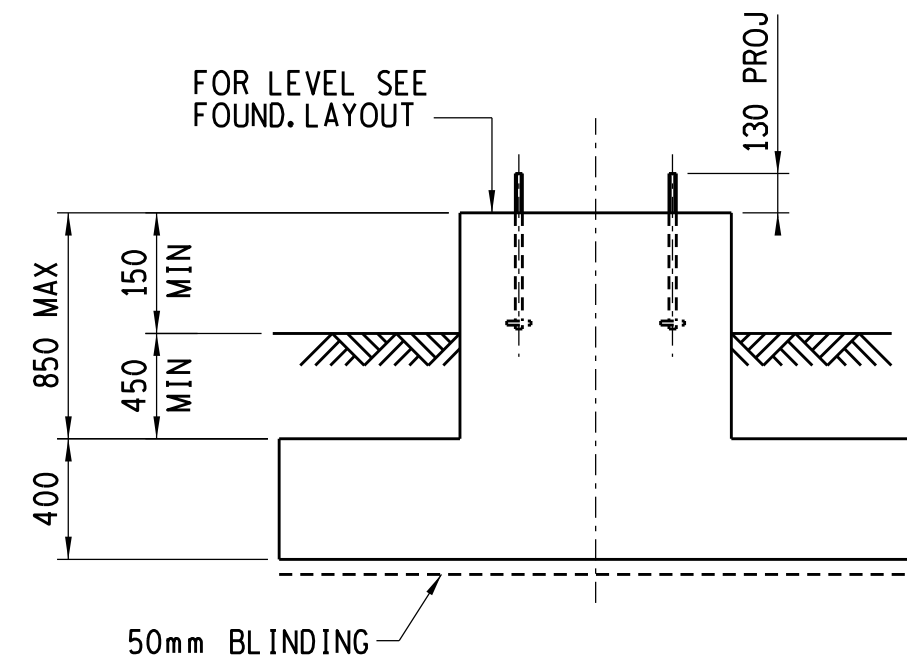
H



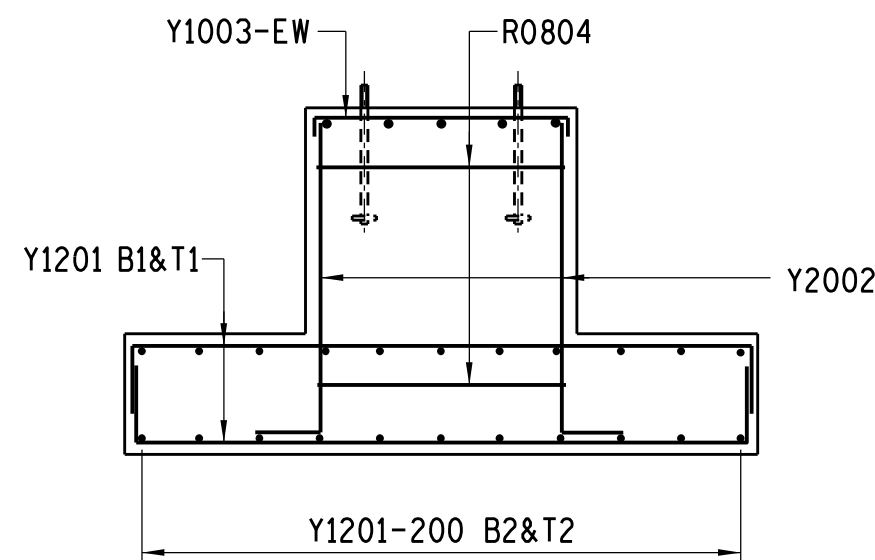
PLAN - CONCRETE



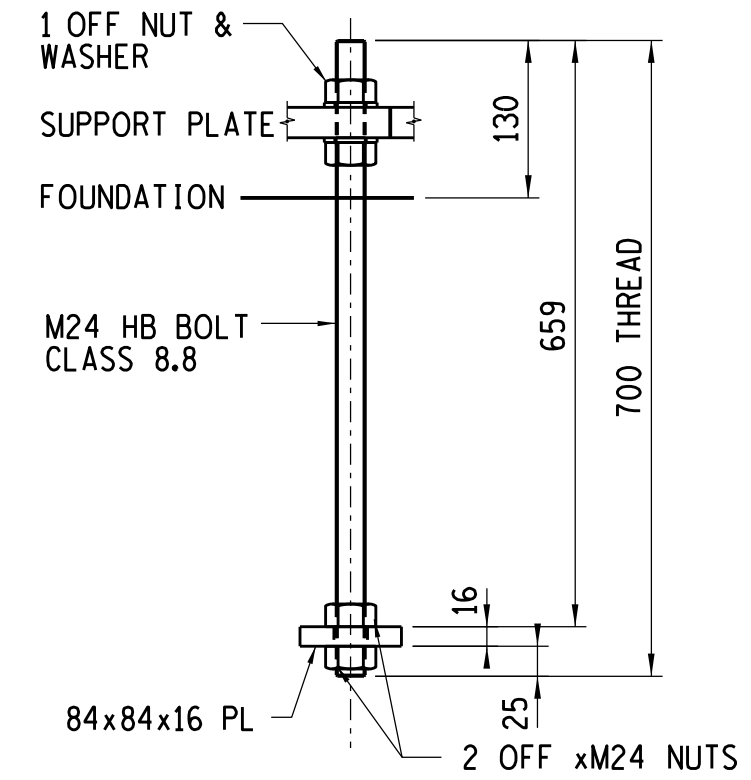
PLAN-REINFORCING



ELEVATION - CONCRETE



ELEVATION - REINFORCING



H.D. BOLT DETAIL

No. OFF - 4

MASS OF ONE BOLT INCLUDING
4 NUTS AND 4 WASHERS = 8,54 kg
NTS

NOTES

- CONCRETE STRENGTH AT 28 DAYS/STONE SIZE :BLINDING = 15/19
FOUNDATION = 25/19
SLUMP VALUE 75mm(±25mm)
- MIN. COVER TO REINFORCEMENT TO BE 50mm
- a. HD BOLTS (GRADE 8.8) SUPPLIED BY CIVIL CONTRACTOR COMPLETE WITH NUTS & WASHERS TO BE HOT DIPPED GALVANISED TO SANS 121
b. THREAD TO BE OVER-CUT TO SANS 121 TO ALLOW FOR THICKNESS OF GALVANISING
- FORMWORK TO EXTEND AT LEAST 150mm BELOW GROUND LEVEL
- STEEL TEMPLATE TO BE USED FOR SETTING OUT OF HD BOLTS
- 30 MPa FLOWABLE NON-SHRINK GROUT UNDER BASE PLATES ONLY IF REQUIRED
- ALL TOP EDGES TO HAVE 20 x 20 CHAMFER
- ALL WORK TO BE IN ACCORDANCE WITH SANS 1200 SERIES OF SPECIFICATIONS: TOLERANCE/DEVIATION TO BE DEGREE OF ACCURACY II
- CONCRETE FINISH : TOP OF FOUNDATION - WOOD FLOAT FINISH
SIDES OF FOUNDATION - SMOOTH OFF SHUTTER FINISH
- THESE FOUNDATIONS HAVE BEEN DESIGNED TO FOUND ON COMPETENT FOUNDING MATERIAL. IN ALL CASES COMPETENCY OF FOUNDING MATERIAL MUST BE ESTABLISHED BY A QUALIFIED GEO-TECHNICAL ENGINEER
- IN-SITU MATERIAL TO BE COMPACTED TO 93% MOD ASSHTO DENSITY AT OMC. MATERIAL TO HAVE A MINIMUM BEARING CAPACITY OF 15kPa
FOUNDING MATERIAL. IN ALL CASES COMPETENCY OF FOUNDING MATERIAL MUST BE ESTABLISHED BY A QUALIFIED GEO-TECHNICAL ENGINEER

ITEM AND No OFF	BARS						SHAPE CODE	STANDARD SHAPES BENDING DIMENSIONS mm				
	Y or R	DIA.	MK.	No OFF		CUTTING LENGTH mm		TOTAL LENGTH m	A	B	C	R
				PER ITEM	TOTAL							
FOR 1 FOUNDATION	Y	12	01		44	2450		38	250	2000		
	Y	20	02		16	A		37	B			
	Y	10	03		10	1050		38	150	800		
	R	08	04		C	3400		60	800	800		

$$B = (\text{LENGTH OF PLINTH} - 50) + 325$$

$$A = B + 520$$

$$C = (B/300) + 1$$

	MIN.	MAX.
FOUNDATION VOLUME	2.25m³	2.46m³
BLINDING VOLUME	0.21m³	0.21m³
REBAR WEIGHT	163kg	175.2kg

				8829		APPLICATION GUIDE				
4	UPDATED TO STANDARD AND REVISED HD BOLT FOR ENC 2021.			AT	BH	<i>Am</i> 15-02-2021	301-305 MED. EQP. SUPP.			
REV	REVISION DESCRIPTION			DRAWN	CHKD	AUTH	DATE	0.54/	REFERENCE	DRAWINGS
APPROVED BY		 Eskom					Eskom Holdings SOC Ltd			
M.VAN DEN ENDE							Reg No 2002/015527/30			
DATE 12/07/93		<div>MEDIUM EQUIPMENT SUPPORT PAD TYPE FOUNDATION DETAIL</div>								
CHECKED BY										
M.VAN DEN ENDE										
DATE 12/07/93										
DRAWN BY										
RJC		©								
DATE 29/6/93										
SCALE 1:25		0.54/4358					SHEET NUMBER		REVISION	
							0		4	

1 2 3 4 5 6 7 8 9 10 11 12