

**COLUMN FOUNDATION**  
**TYPE - RC1.**

The drawing illustrates the structural details of a Column Foundation (Type RC1). It includes a Plan view and a Section view.

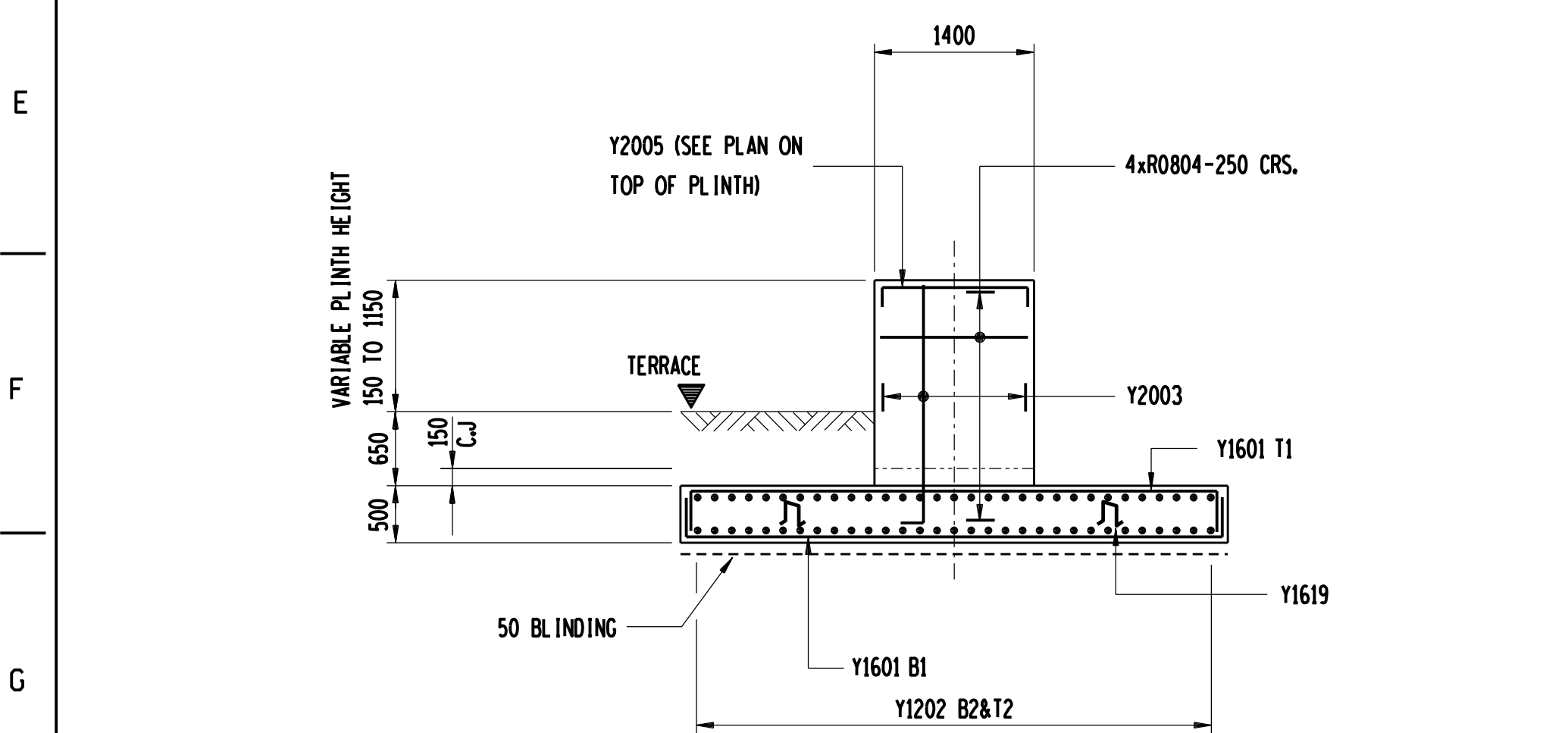
**Plan View:**

- Overall dimensions: 4800 (width) x 2800 (depth).
- Foundation dimensions: 1700 (width) x 1400 (depth).
- Central column dimensions: 1400 (width) x 1400 (depth).
- Reinforcement details: 4R804 (top/bottom bars), Y1601-10-300 B1&T1 (left/right bars), Y1619-8-1000-EW (bottom bars).
- Foundation depth: 700mm.
- Foundation type: RC1.

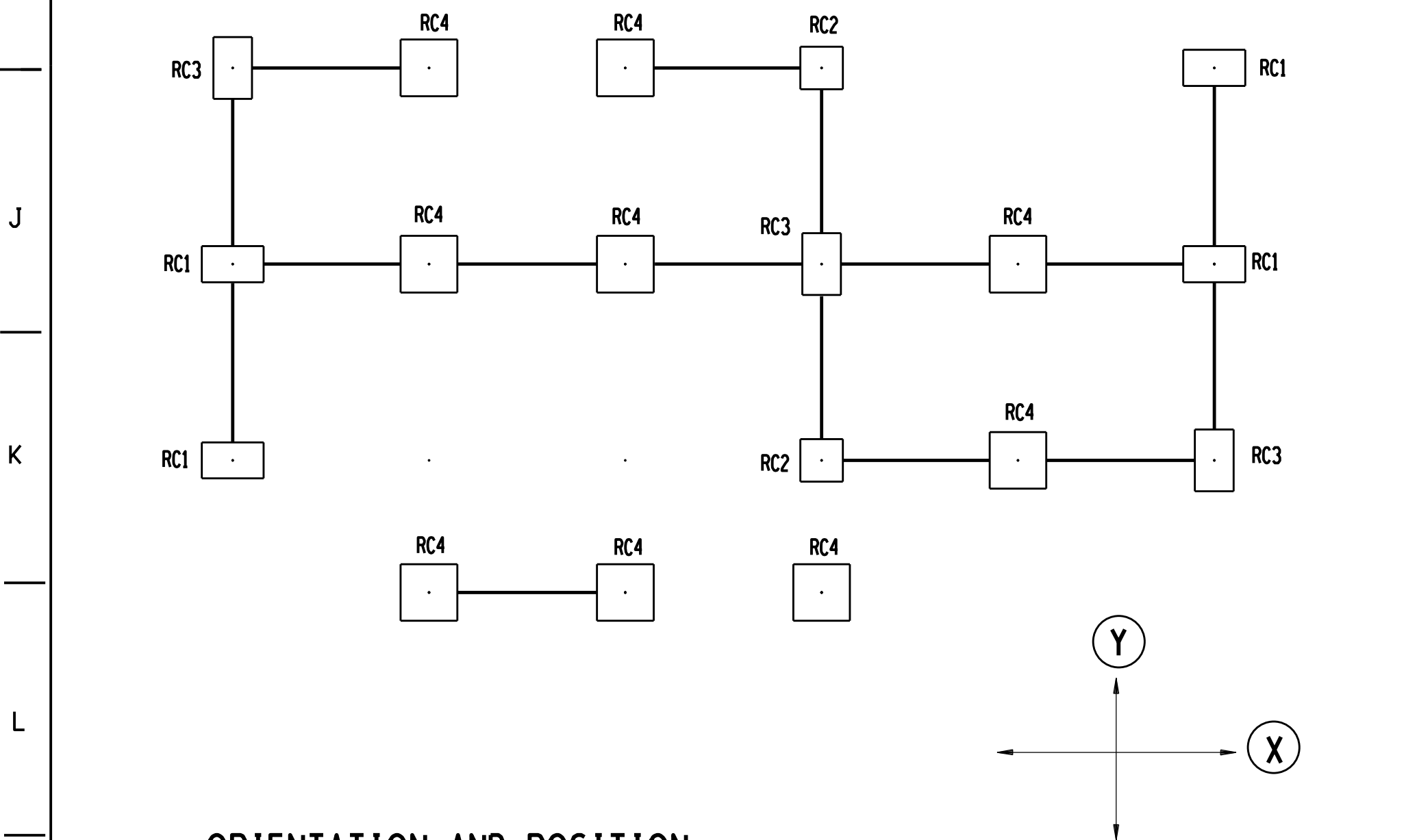
**Section View:**

- Foundation depth: 700mm.
- Reinforcement details: Y2003-6 EF (top bars), Y1202-3I-150 B2&T1 (bottom bars).

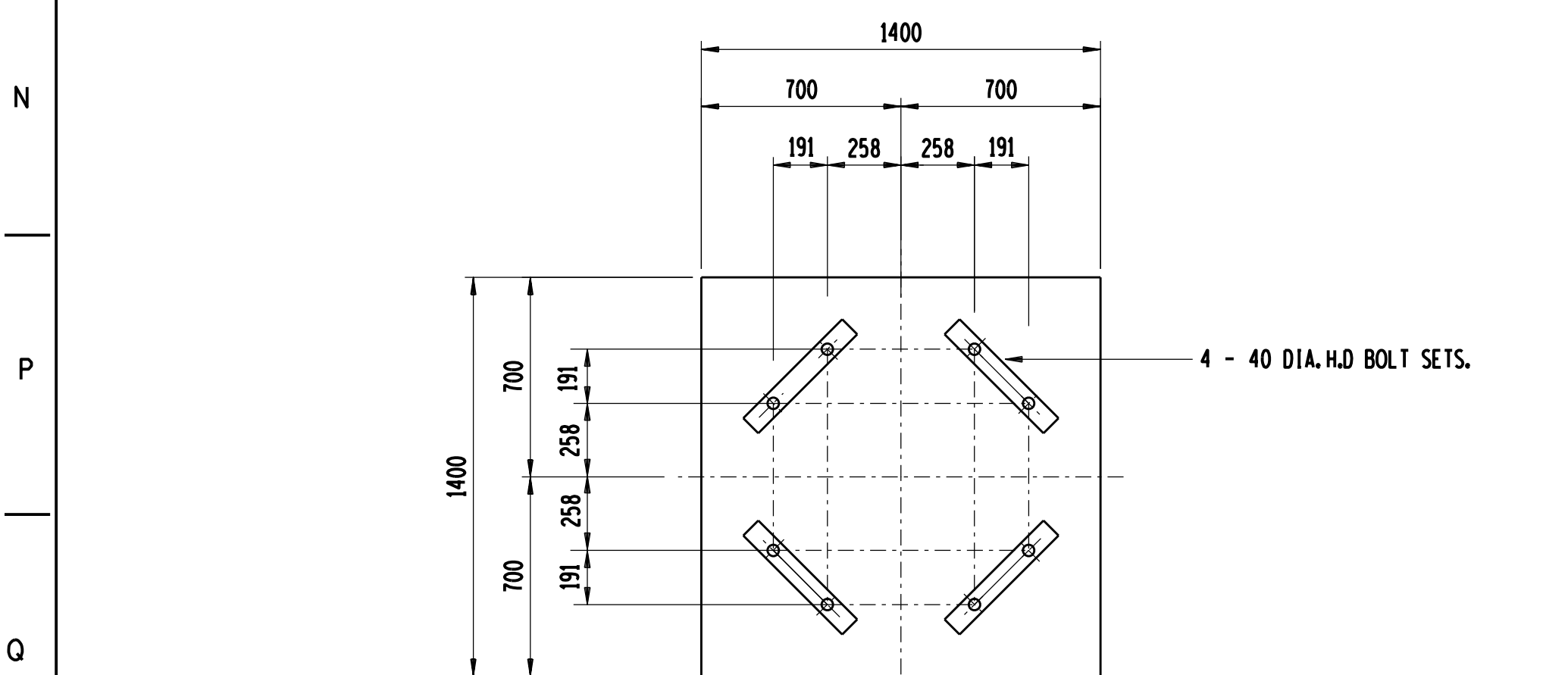
## PLAN



SECTION A-A



ORIENTATION AND POSITION  
OF 132 kV STEELWORK FOUNDATIONS.

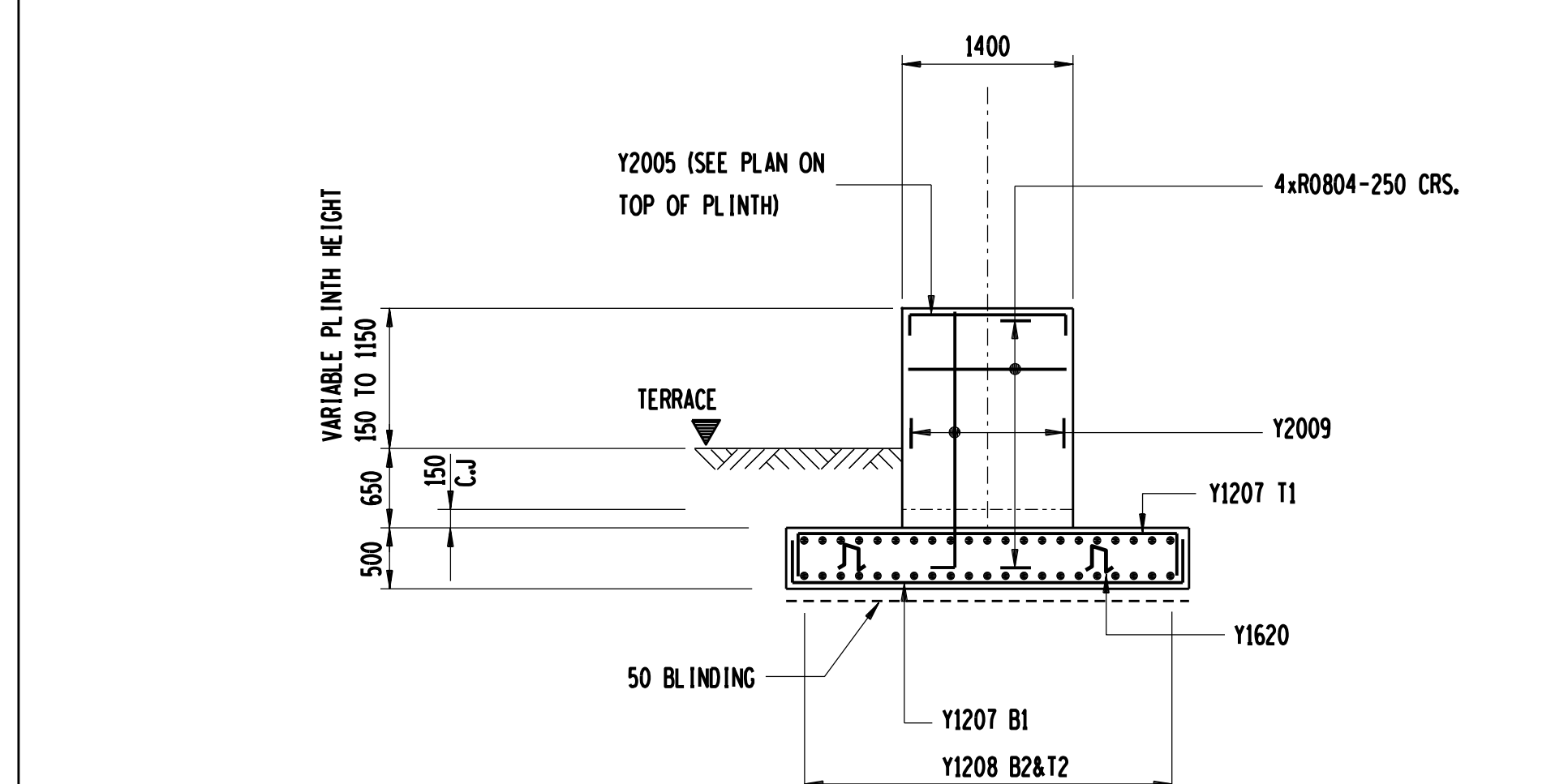


TYPICAL H.D BOLT POSITIONING ON PLINTH

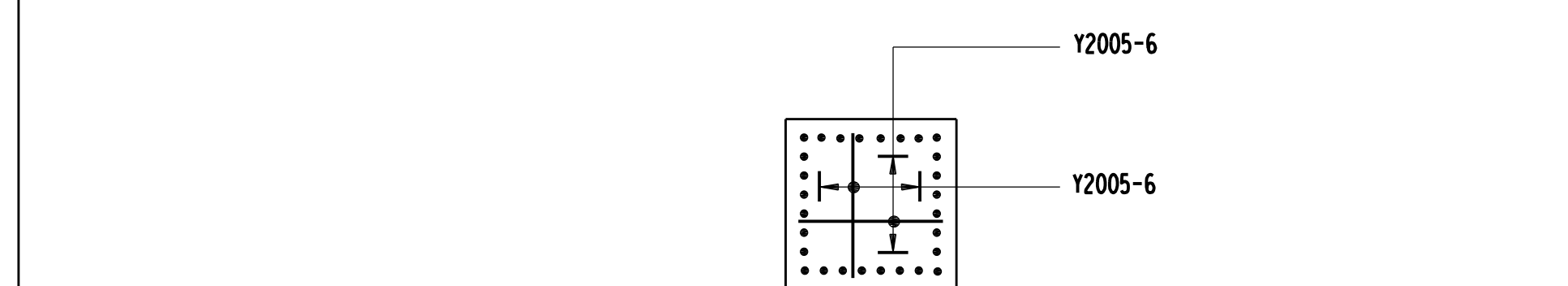
1:10

Technical drawing of a column foundation (TYPE - RC2). The drawing shows a square foundation with a central column. The overall dimensions are 3300 mm by 3300 mm. The column dimensions are 1400 mm by 1400 mm. The foundation is reinforced with 4xR0804 bars. The drawing includes a section line B-B and a detail view of the reinforcement bars. The reinforcement bars are labeled as Y2009-6 EF, Y1620-8-1000-E-W, Y1208-19-175 B2&T2, Y1207-19-175 B1& T1, and Y2009-8 EF.

## PLAN

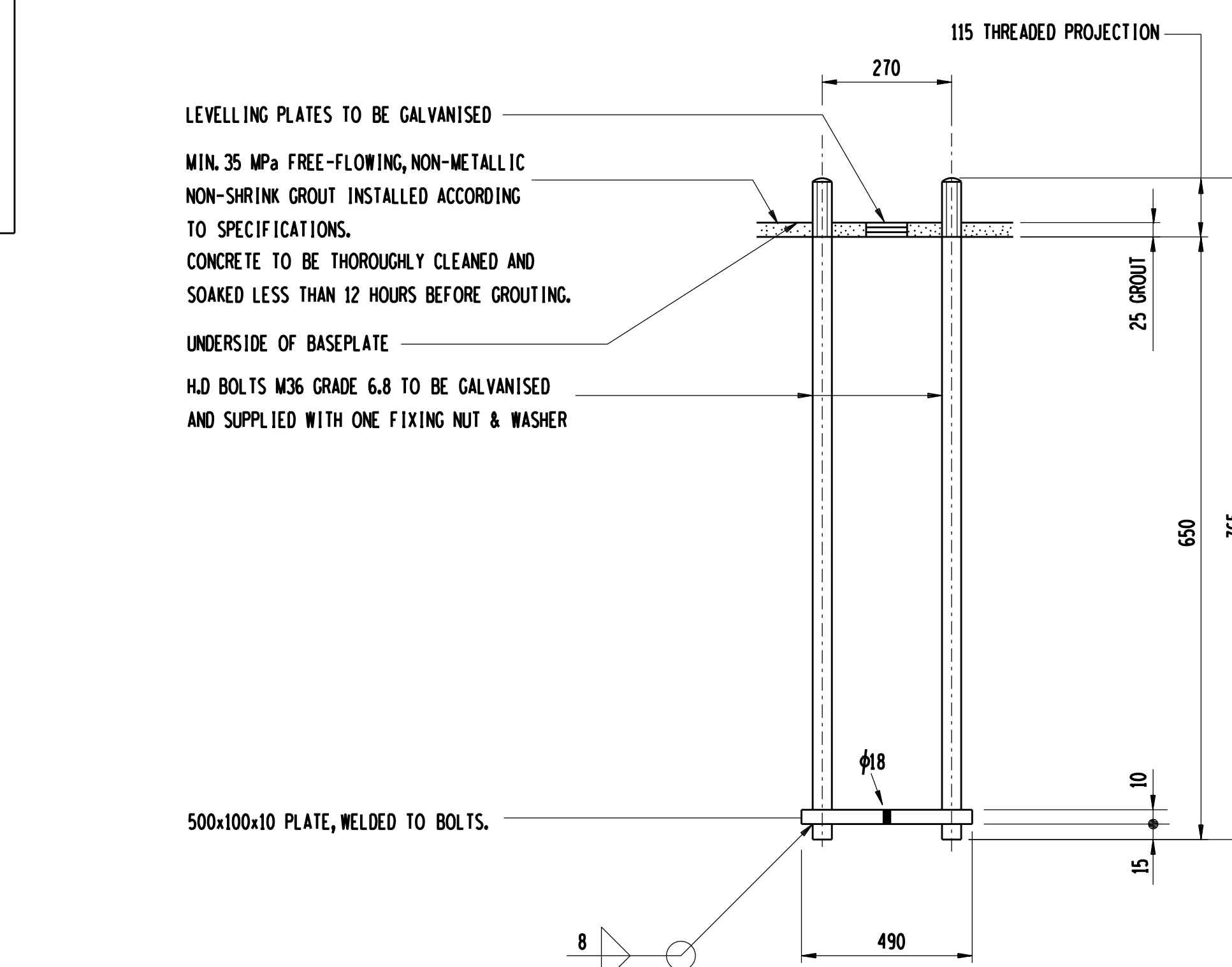


SECTION B-B



TYPICAL PLAN ON PLINTH

(STIRRUPS NOT SHOWN)

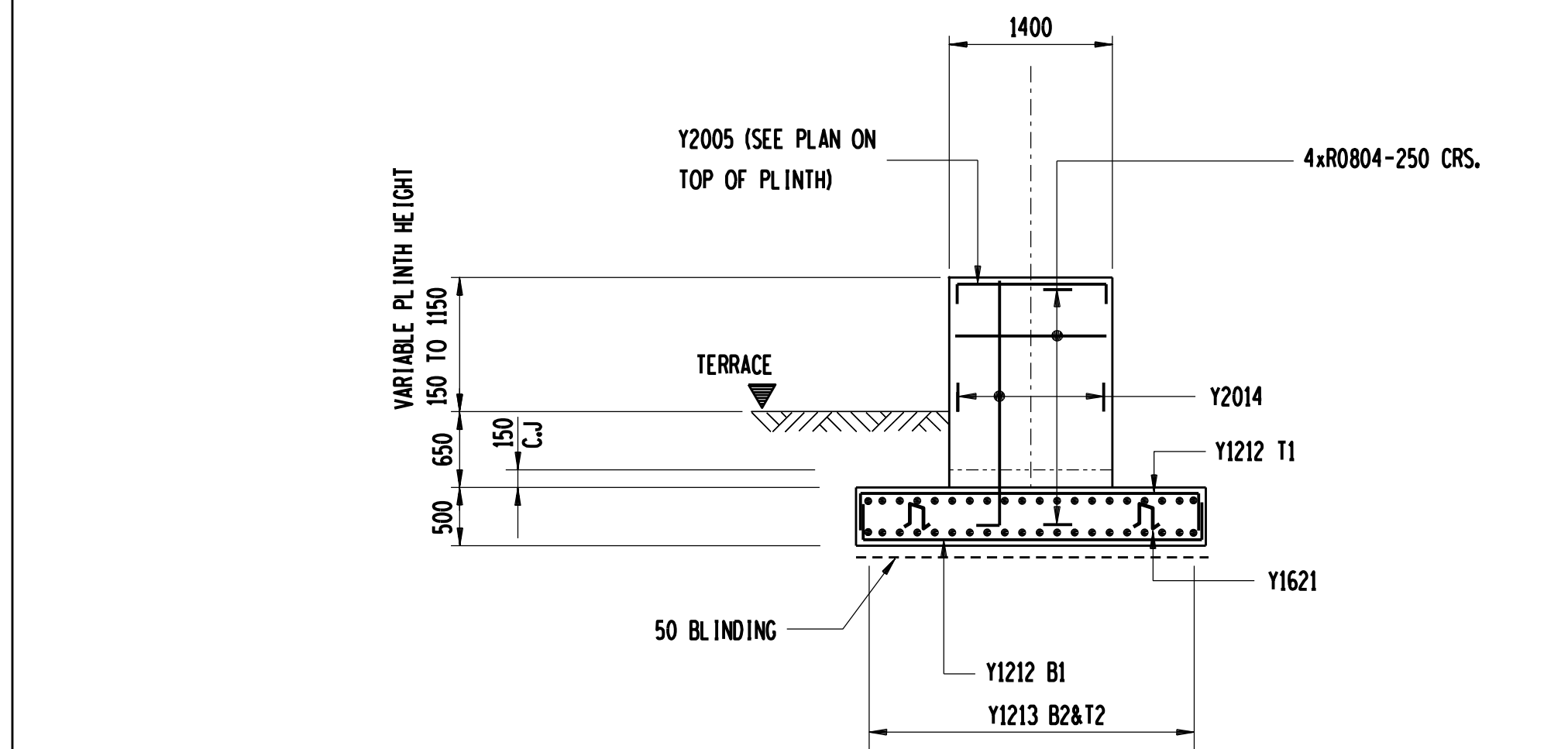


TYPICAL H.D BOLT DETAIL

**COLUMN FOUNDATION**  
**TYPE - RC3.**

The drawing shows a plan view of a square column foundation. The overall dimensions are 3000 mm by 4800 mm. The column is 1400 mm square, centered within the foundation. The foundation is divided into four quadrants by the column centerlines. The dimensions from the column centerline to the foundation edge are 800 mm horizontally and 1700 mm vertically. The column is reinforced with 4xR804 bars. The foundation is reinforced with 4xR804 bars in the top and bottom quadrants, and 4xR804 bars in the left and right quadrants. The reinforcement is labeled as Y2014-8 EF, Y2014-6 EF, 4xR804, Y1213-21-150 B2 & Y1212-33-150 B1 & T1, and Y1621-8-1000-EW. The drawing also shows a section line C-C and a section line Y-Y.

## PLAN



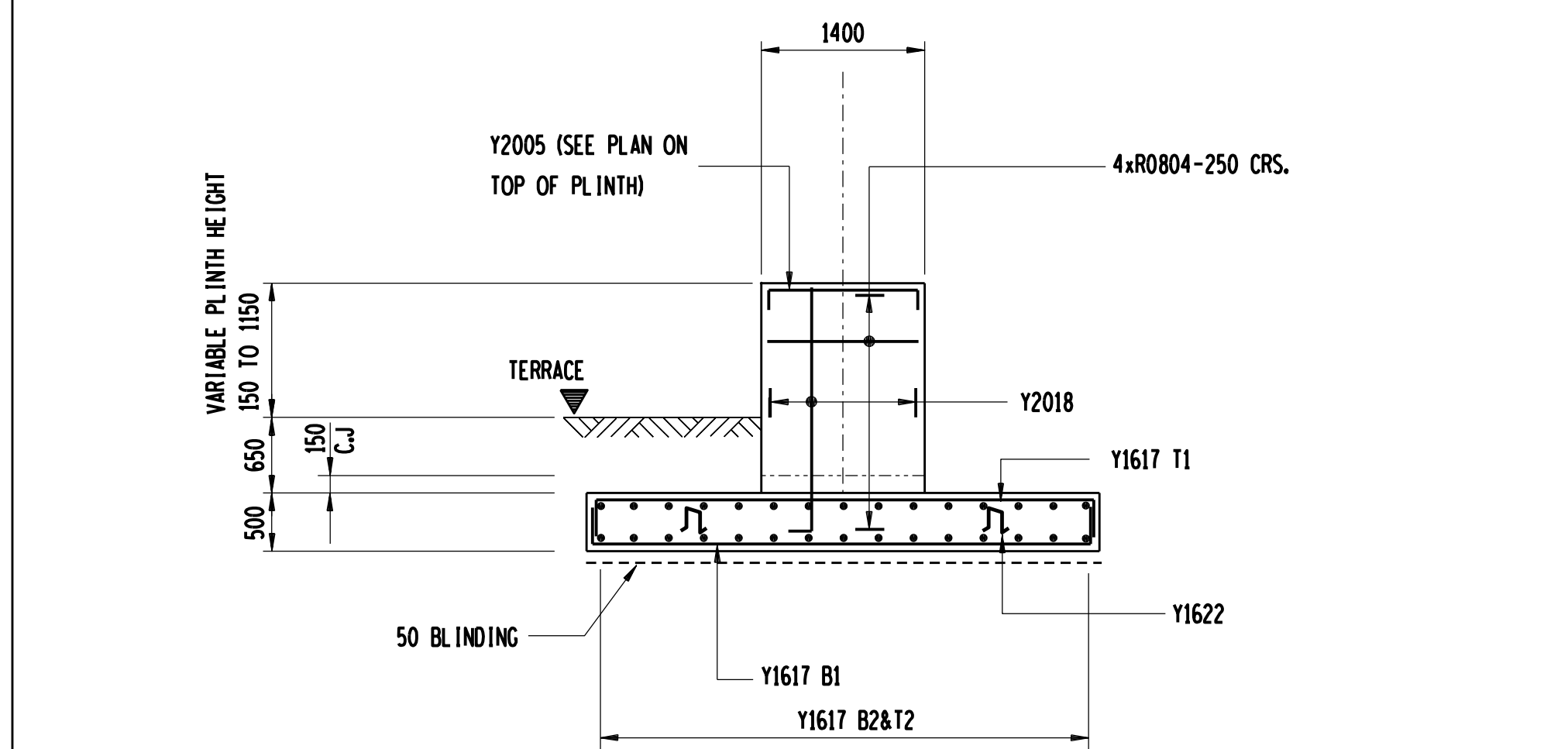
SECTION C-C

**COLUMN FOUNDATION**  
**TYPE - RC4.**

4400  
1500 1400 1500  
Y  
4400  
1500 1400 1500  
X  
Y1622-8-1000-EW  
Y2018-6 EF  
Y1617-15-300 B2&T2  
4xR0804  
Y2018-8 EF

PLAN

## PLAN



SECTION D-D

[illegible]

TO DETERMINE DIM. A,B & C.

$$A=500+650+\text{VARIABLE PLINTH HEIGHT}-130 = 1020 + \text{VARIABLE PLINTH HEIGHT.}$$

$$B=A+170$$

$$C = \frac{A}{200}$$

NOTES:

- 1) CONCRETE STRENGTHS AT 28 DAYS/STONE SIZE & BLINDING = 15/19  
FOUNDATIONS = 25/19
- 2) MIN. CONCRETE COVER TO REINFORCEMENT = 50mm
- 3) THESE FOUNDATIONS HAVE BEEN DESIGNED TO FOUND ON COMPACT FOUNDING MATERIAL HAVING A MIN. GROUND BEARING CAPACITY OF 150KPa
- 4) IN ALL CASES, COMPETENCY OF FOUNDING MATERIAL MUST BE ESTABLISHED BY A QUALIFIED GEOTECHNICAL ENGINEER
- 5) STEEL TEMPLATE TO BE USED FOR SETTING OUT & BOLTS
- 6) a) H&D BOLTS SUPPLIED BY CIVIL CONTRACTOR COMPLETE WITH NUTS & WASHERS AND TO BE GALVANISED TO S.A.B.S 763  
b) NOT OVERTIGHTENED & MUST BE CLEARLY MARKED WITH DIAMETER, GRADE AND BASE TYPE
- c) THREAD OF NUTS TO BE OVER-CAST TO SABS 150 1461 TO ALLOW FOR THE THICKNESS OF GALVANISING
- d) ANY DAMAGE TO THE GALVANISED SURFACES SHALL BE REPAIRED WITH AN APPROVED ZINC-MILK SPRAY OR INORGANIC ZINC-RICH PAINT COMPLYING WITH S.A.B.S. 926, APPLICATION TO SUPPLIERS SPECIFICATIONS
- 7) ALL TOP EDGES OF CONCRETE ABOVE GROUND TO HAVE 20 x 20 CHAMFERS
- 8) ALL WORK TO BE IN ACCORDANCE WITH S.A.B.S. 1200 SERIES SPECIFICATIONS
- 9) CONCRETE FINISH : TOP OF FOUNDATION - WOOD FLOAT FINISH

1.	QAGS.	5/9/10	FOR HOLE NOOD TO ASK FOR DETAIL & NOTES REVISED.	DA.	ED.
2.	QAGS.	5/9/10	NO. INCORPORATED IN 2005. REVISED.....	QAGS.	QAGS.
3.	AB.	1/2/11	ROLL LINGERED.....	QAGS.	QAGS.
4.	QAGS.	1/2/11	SECTION 1-2.0. TYPE LINE COR.	QAGS.	QAGS.
5.	QAGS.	1/2/11	1ST ISSUE / 2ND ISSUE LUTTERING.....	QAGS.	QAGS.
6.	QAGS.	1/2/11	REVISIONS FOR 1/2/11.....	QAGS.	QAGS.
7.	QAGS.	1/2/11	REVISIONS FOR 1/2/11.....	QAGS.	QAGS.
8.	QAGS.	1/2/11	REVISIONS FOR 1/2/11.....	QAGS.	QAGS.
9.	QAGS.	1/2/11	REVISIONS FOR 1/2/11.....	QAGS.	QAGS.
10.	QAGS.	1/2/11	REVISIONS FOR 1/2/11.....	QAGS.	QAGS.
11.	QAGS.	1/2/11	REVISIONS FOR 1/2/11.....	QAGS.	QAGS.
12.	QAGS.	1/2/11	REVISIONS FOR 1/2/11.....	QAGS.	QAGS.
13.	QAGS.	1/2/11	REVISIONS FOR 1/2/11.....	QAGS.	QAGS.
14.	QAGS.	1/2/11	REVISIONS FOR 1/2/11.....	QAGS.	QAGS.
15.	QAGS.	1/2/11	REVISIONS FOR 1/2/11.....	QAGS.	QAGS.
16.	QAGS.	1/2/11	REVISIONS FOR 1/2/11.....	QAGS.	QAGS.
17.	QAGS.	1/2/11	REVISIONS FOR 1/2/11.....	QAGS.	QAGS.
18.	QAGS.	1/2/11	REVISIONS FOR 1/2/11.....	QAGS.	QAGS.
19.	QAGS.	1/2/11	REVISIONS FOR 1/2/11.....	QAGS.	QAGS.
20.	QAGS.	1/2/11	REVISIONS FOR 1/2/11.....	QAGS.	QAGS.
21.	QAGS.	1/2/11	REVISIONS FOR 1/2/11.....	QAGS.	QAGS.
22.	QAGS.	1/2/11	REVISIONS FOR 1/2/11.....	QAGS.	QAGS.
23.	QAGS.	1/2/11	REVISIONS FOR 1/2/11.....	QAGS.	QAGS.
24.	QAGS.	1/2/11	REVISIONS FOR 1/2/11.....	QAGS.	QAGS.
25.	QAGS.	1/2/11	REVISIONS FOR 1/2/11.....	QAGS.	QAGS.
26.	QAGS.	1/2/11	REVISIONS FOR 1/2/11.....	QAGS.	QAGS.
27.	QAGS.	1/2/11	REVISIONS FOR 1/2/11.....	QAGS.	QAGS.
28.	QAGS.	1/2/11	REVISIONS FOR 1/2/11.....	QAGS.	QAGS.
29.	QAGS.	1/2/11	REVISIONS FOR 1/2/11.....	QAGS.	QAGS.
30.	QAGS.	1/2/11	REVISIONS FOR 1/2/11.....	QAGS.	QAGS.
31.	QAGS.	1/2/11	REVISIONS FOR 1/2/11.....	QAGS.	QAGS.
32.	QAGS.	1/2/11	REVISIONS FOR 1/2/11.....	QAGS.	QAGS.
33.	QAGS.	1/2/11	REVISIONS FOR 1/2/11.....	QAGS.	QAGS.
34.	QAGS.	1/2/11	REVISIONS FOR 1/2/11.....	QAGS.	QAGS.
35.	QAGS.	1/2/11	REVISIONS FOR 1/2/11.....	QAGS.	QAGS.
36.	QAGS.	1/2/11	REVISIONS FOR 1/2/11.....	QAGS.	QAGS.
37.	QAGS.	1/2/11	REVISIONS FOR 1/2/11.....	QAGS.	QAGS.
38.	QAGS.	1/2/11	REVISIONS FOR 1/2/11.....	QAGS.	QAGS.
39.	QAGS.	1/2/11	REVISIONS FOR 1/2/11.....	QAGS.	QAGS.
40.	QAGS.	1/2/11	REVISIONS FOR 1/2/11.....	QAGS.	QAGS.
41.	QAGS.	1/2/11	REVISIONS FOR 1/2/11.....	QAGS.	QAGS.
42.	QAGS.	1/2/11	REVISIONS FOR 1/2/11.....	QAGS.	QAGS.
43.	QAGS.	1/2/11	REVISIONS FOR 1/2/11.....	QAGS.	QAGS.
44.	QAGS.	1/2/11	REVISIONS FOR 1/2/11.....	QAGS.	QAGS.
45.	QAGS.	1/2/11	REVISIONS FOR 1/2/11.....	QAGS.	QAGS.
46.	QAGS.	1/2/11	REVISIONS FOR 1/2/11.....	QAGS.	QAGS.
47.	QAGS.	1/2/11	REVISIONS FOR 1/2/11.....	QAGS.	QAGS.
48.	QAGS.	1/2/11	REVISIONS FOR 1/2/11.....	QAGS.	QAGS.
49.	QAGS.	1/2/11	REVISIONS FOR 1/2/11.....	QAGS.	QAGS.
50.	QAGS.	1/2/11	REVISIONS FOR 1/2/11.....	QAGS.	QAGS.
51.	QAGS.	1/2/11	REVISIONS FOR 1/2/11.....	QAGS.	QAGS.
52.	QAGS.	1/2/11	REVISIONS FOR 1/2/11.....	QAGS.	QAGS.
53.	QAGS.	1/2/11	REVISIONS FOR 1/2/11.....	QAGS.	QAGS.
54.	QAGS.	1/2/11	REVISIONS FOR 1/2/11.....	QAGS.	QAGS.
55.	QAGS.	1/2/11	REVISIONS FOR 1/2/11.....	QAGS.	QAGS.
56.	QAGS.	1/2/11	REVISIONS FOR 1/2/11.....	QAGS.	QAGS.
57.	QAGS.	1/2/11	REVISIONS FOR 1/2/11.....	QAGS.	QAGS.