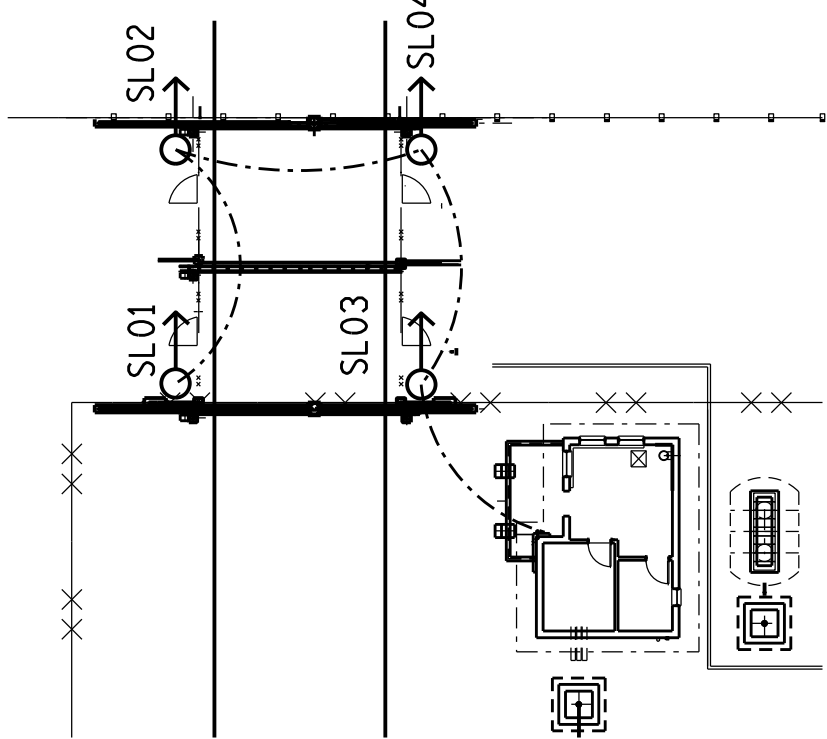


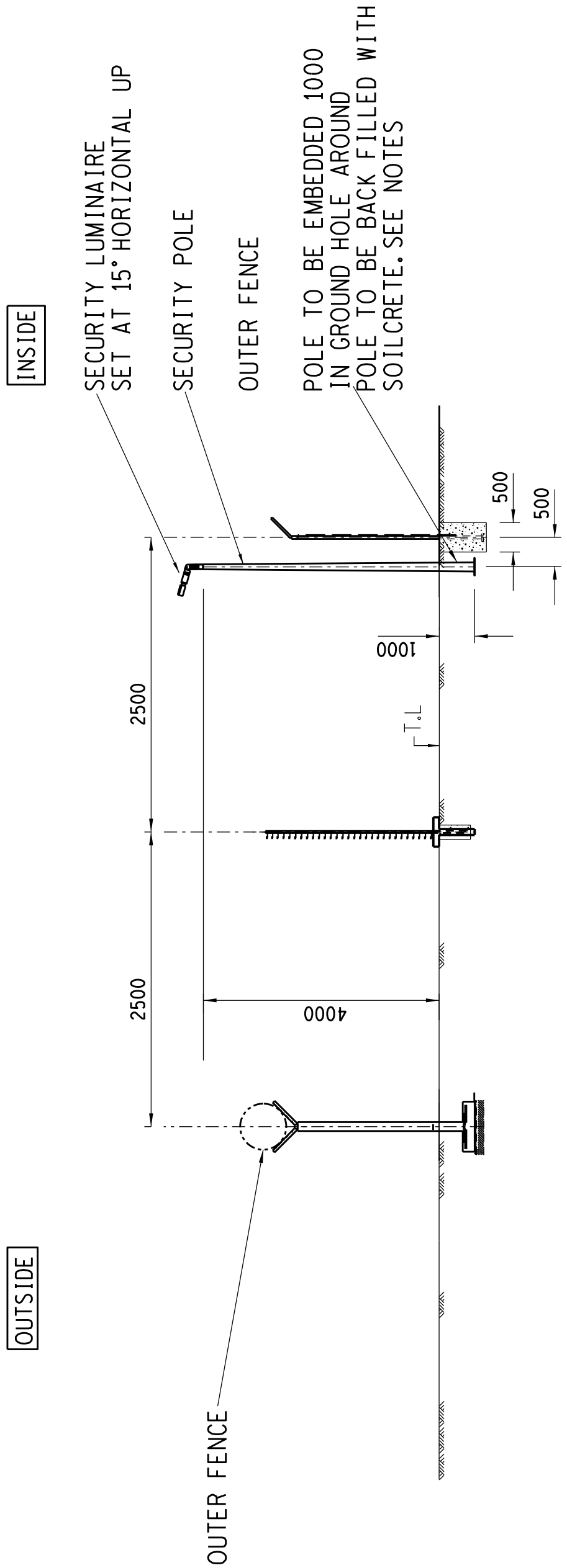
EQUIPMENT SCHEDULE		
ITEM	DESCRIPTION	SUPPLIER CAT NO.
LUMINAIRE POLE	GALVANISED STEEL POLE 5m, 4m MH ABOVE GROUND LEVEL, PROVIDED WITH ACCESS OPENING CABLE ENTRY AND GLAND PLATE WITH 5A MCB, A BASE PLATE SHALL BE PROVIDED FOR DIRECT EMBEDMENT INTO GROUND. SEE DGN 0.54/8805 FOR DETAILS.	84
LUMINAIRE	60W MAXIMUM LED HIGH PERFORMANCE LUMINAIRE, LUMINAIRE EFFICACY 120 LM/W, ILLUMINATION PATTERN, BATTING SHAPE. COLOUR TEMPERATURE 4000. COLOUR RENDERING 80. LUMINAIRE BODY: NON FERROUS METAL, IP65. LUMINAIRE SHALL COMPLY WITH THE SPECIFICATIONS IN 240-139282493 DOCUMENT. LUMINAIRE SHALL BE BOTTOM ENTRY SPIGOT FOR LUMINAIRE TO FIT ON POLE.	84

CABLE SCHEDULE FOR SECURITY LIGHTING LV RETICULATION (SLDB1)				
CABLE No	CABLE TYPE	FROM	TO	ESTIMATED LENGTH (m)
DB1.SLDB1	BYX4HCV	DB1	SLDB1	450
SLDB1.SL05-SL21	BYX4ECV	SLDB1	SL05-SL21	300
SLDB2.SL22-SL39	BYX4ECV	SLDB1	SL22-SL39	300
DB1.SLDB2	BYX4HCV	DB1	SLDB2	60
SLDB2.SL40-SL57	BYX4ECV	SLDB2	SL40-SL57	300
SLDB2.SL58-SL75	BYX4ECV	SLDB2	SL58-SL75	300
SLDB1.ACB-DB8	BYX4DCV	SLDB1	ACB-DB8	300
SLDB2.ACB-DB8	BYX4DCV	SLDB2	ACB-DB8	300

SECURITY LIGHTING ZONES	
ZONE	POLE NUMBER
1	SL05-SL21
2	SL22-SL39
3	SL40-SL57
4	SL58-SL75



ENTRANCE GATE LIGHTING LAYOUT
SL01-SL04 SHALL BE SUPPLIED AND SWITCHED FROM ACB



- NOTES:**
1. SECURITY LIGHTING ELECTRICAL INSTALLATION WORK SHALL BE IN ACCORDANCE WITH:
 - 1.1. TECHNICAL SPECIFICATION
 - 1.2. SANS 10142
 - 1.3. SANS 10198
 2. POWER CABLES SHALL FOLLOW CABLE ROUTE AS SHOWN. WHEN LEAVING THE CABLE TRENCHES, THE CABLE SHALL PASS BELOW THE TRENCH WALL FOUNDATION
 3. POWER CABLES FOLLOWING ROUTES OUTSIDE THE CABLE TRENCHES SHALL BE BURIED AT A MINIMUM OF 500mm BELOW THE FINISHED TERRACE LEVEL
 4. ROUTE MARKERS SHALL BE USED TO INDICATE ROUTE DEVIATIONS FOR BURIED CABLES IN ACCORDANCE WITH DRG 0.00/1286.
 5. POWER CABLES SHALL BE LABELLED IN ACCORDANCE WITH DRG 0.00/1290. CABLE NUMBERS ARE INDICATED ON DRAWING & IN CABLE SCHEDULE
 6. POWER CABLES SHALL FOLLOW CABLE TRENCHES INSIDE CONTROL BUILDING
 7. 400/230V AC SLDB1-2 LOCATION & SIZE NOT TO SCALE
 8. 400/230V AC SLDB1-2 SHALL BE EARTHED USING A 10mm DIAMETER BARE COPPER EARTH WIRE. THIS EARTH WIRE SHALL BE INSTALLED AT 15 METER INTERVALS AND 1000 DEEP IN GROUND, ENTRY FOR SUPPLY CABLE FROM BOTTOM OF POLE
 9. SECURITY POLES SHALL BE WEATHER PROOF BOXES, METALIC HOT DIPPED GALVANISED BOXES.
 10. THE SECURITY LIGHTING POLE SHALL BE MOUNTED NOT MORE THAN ONE METER FROM THE INNER FENCE
 11. SLDB1&SLDB2 SHALL BE WEATHER PROOF BOXES, METALIC HOT DIPPED GALVANISED BOXES. THE BOX SHALL HAVE A HINGED DOOR WITH PADLOCKABLE LEVER LOCK. THE BOX SHALL BE MOUNTED ON AN INDEPENDANT CONCRETE PLINTH
 12. SL01 – SL04 TO BE SUPPLIED AND SWITCHED FROM ACB
 13. SECURITY POLE SHALL BE EMBEDDED 1000 IN GROUND. A 500x1000 HOLE SHALL BE MADE FOR THE SECURITY POLE. AFTER POLE IS PLANTED, THE REMOVED SOIL SHALL BE MIXED WITH CEMENT AT 12:1 RATIO, REFILLED AND COMPACTED.

FINAL DESIGN
FOR CONSTRUCTION

0	FIRST ISSUE	REVISION DESCRIPTION	DRAWN	CHKD	AUTH	DATE
REV						
APPROVED BY			REFERENCE DRAWINGS			
DATE			Eskom Holdings SOC Ltd Reg No 2002/015527/30			
CHECKED BY						
DATE						
DRAWN BY						
DATE						
SCALE	AS SHOWN					
SHEET NUMBER	1					
REVISION	0					

SECURITY LIGHTING