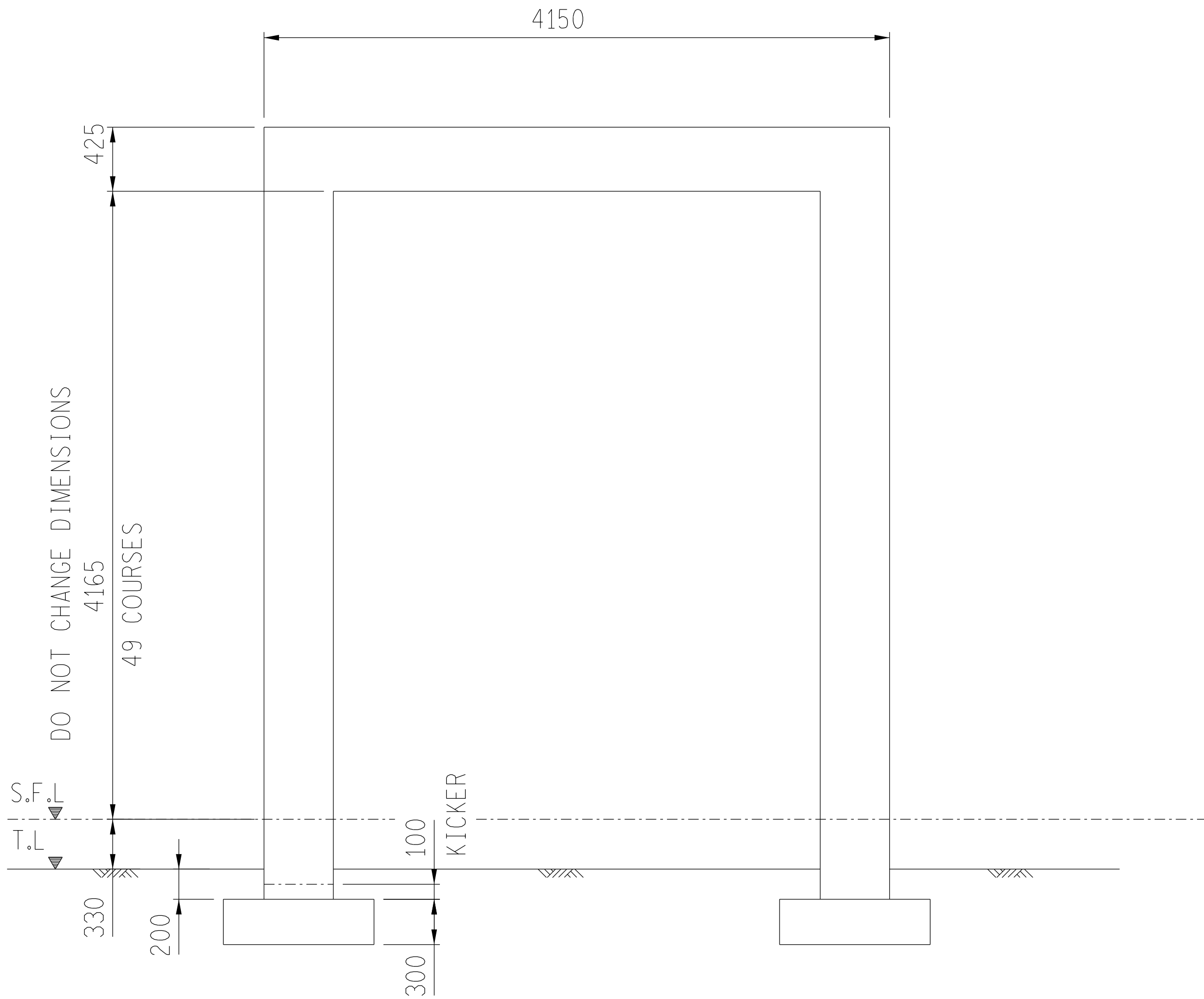
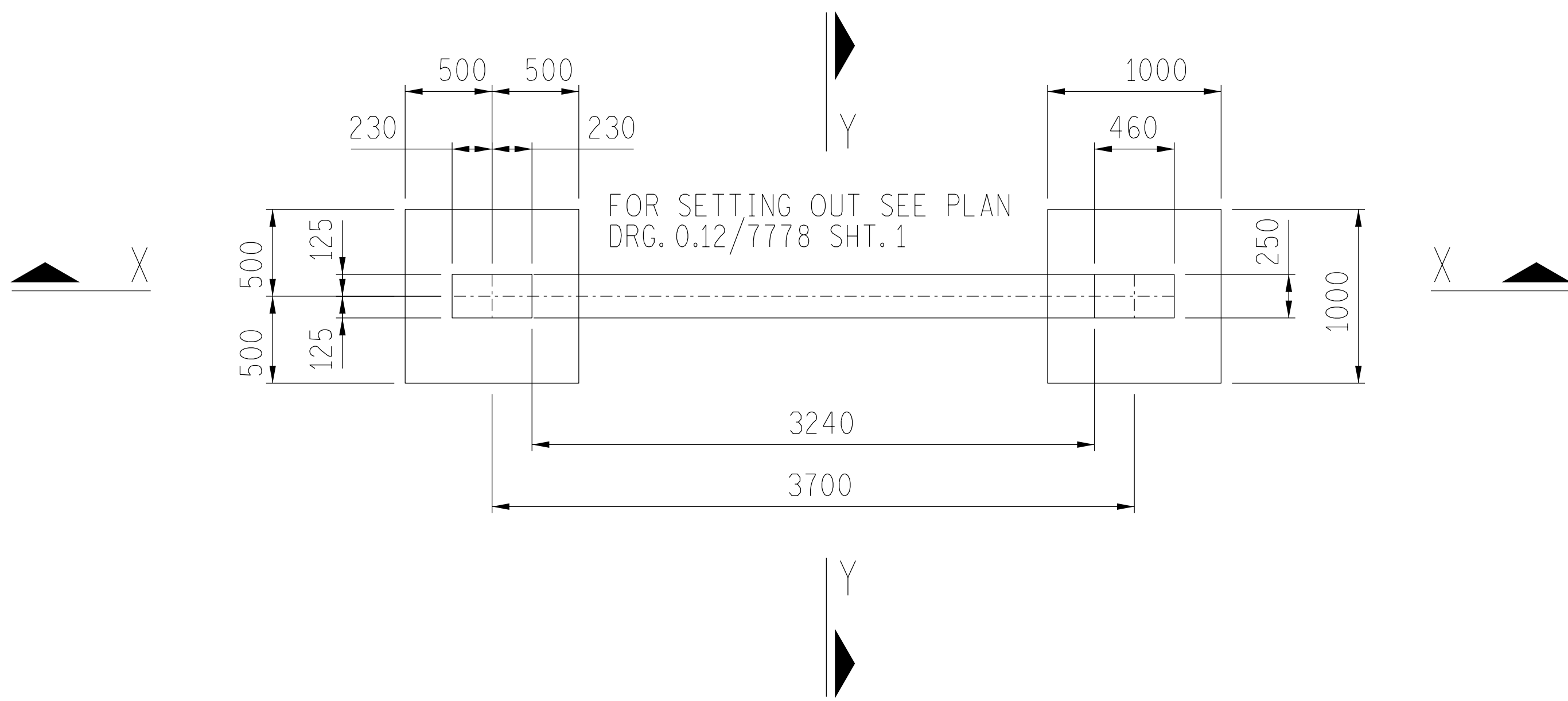


1	2				3			4			5			
ITEM AND No OFF	Y or R	DIA.	MK.	No	BARS		SHAPE CODE	STANDARD SHAPES BENDING DIMENSIONS mm						
				PER ITEM	OFF TOTAL	CUTTING LENGTH mm		TOTAL LENGTH m	A	B	C	D	E	R
FOUNDATIONS	Y	12	01		40	1250		38	200	900				
COLUMNS	Y	16	02		8	1550		37	380					
BEAM	Y	16	03		8	5370		37	4950					
	R	10	04		46	1400		60	400	190				
	Y	16	05		6	5000		38	500	4100				
	R	10	06		24	1300		60	190	365				



SECTION X-X

1:50

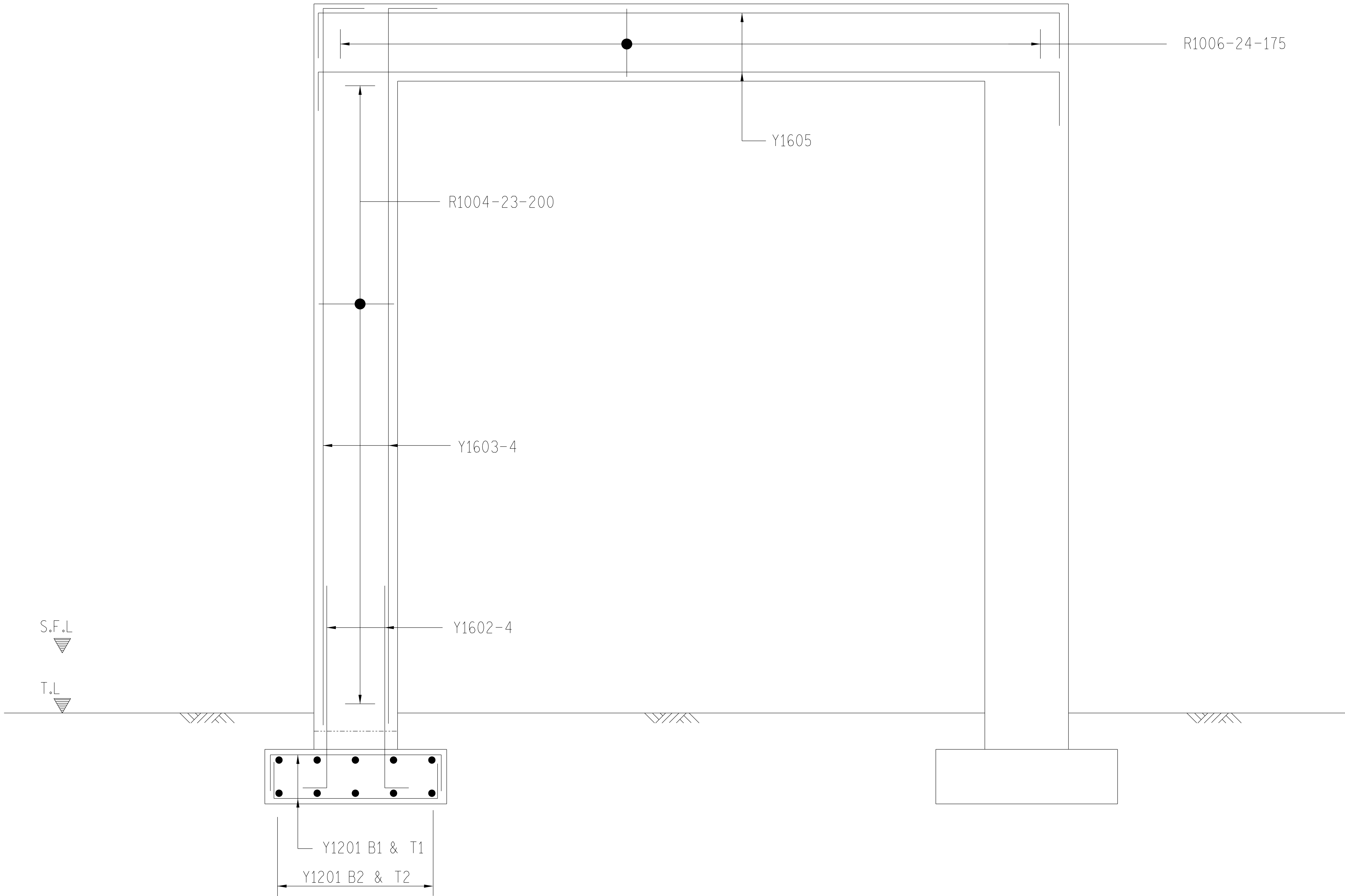


PLAN ON DOOR COLUMN AND BEAM

1:50

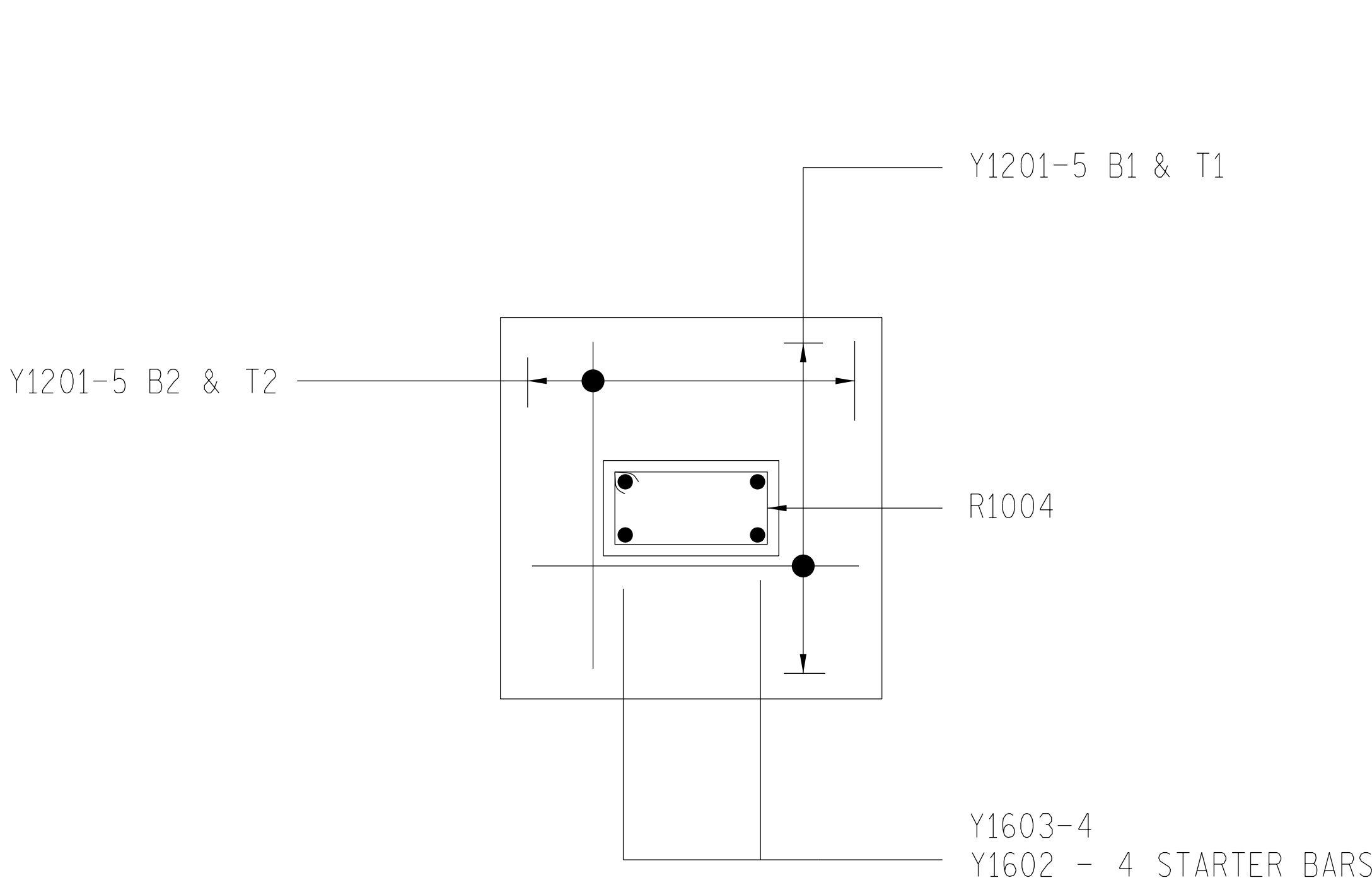
NOTES

1. ALL WORK IN ACCORDANCE WITH SANS 1200 SPECIFICATIONS
2. CONCRETE STRENGTH TO BE 25/19
3. COVER TO REINFORCEMENT TO BE 50mm - FOUNDATIONS
30mm - COLUMNS



ELEVATION

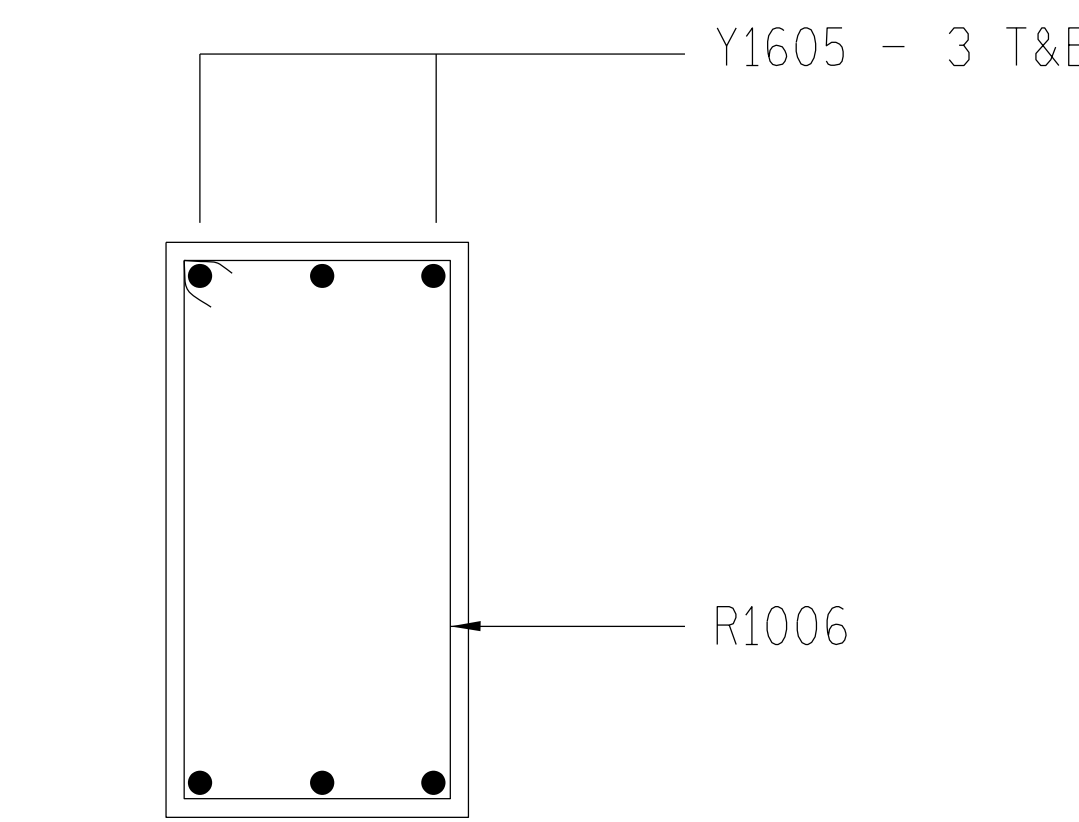
1:25



REINFORCEMENT PLAN ON FOUNDATION

1:25

**FINAL DESIGN
FOR CONSTRUCTION**



SECTION Y-Y

1:50

REV	REVISION DESCRIPTION	DRAWN	CHKD	AUTH	DATE	REFERENCE DRAWINGS
APPROVED BY						
A. MANEL I						
DATE	19-3-2021					
CHECKED BY						
A. KAKA						
DATE	29-1-2021					
DRAWN BY						
DB NAUDE						
DATE	17-8-2020					
SCALE	AS SHOWN					



Eskom Holdings SOC Ltd
Reg No 2002/015527/30

TRANSMISSION SUBSTATIONS
MAINTENANCE AND STORAGE BUILDING
CRAWL BEAM CONCRETE COL. AND BEAM SUPPORT AT D1
CONCRETE AND REINFORCEMENT DETAILS

0.54/8828

10

0

SIZE
GROOTTE A2L