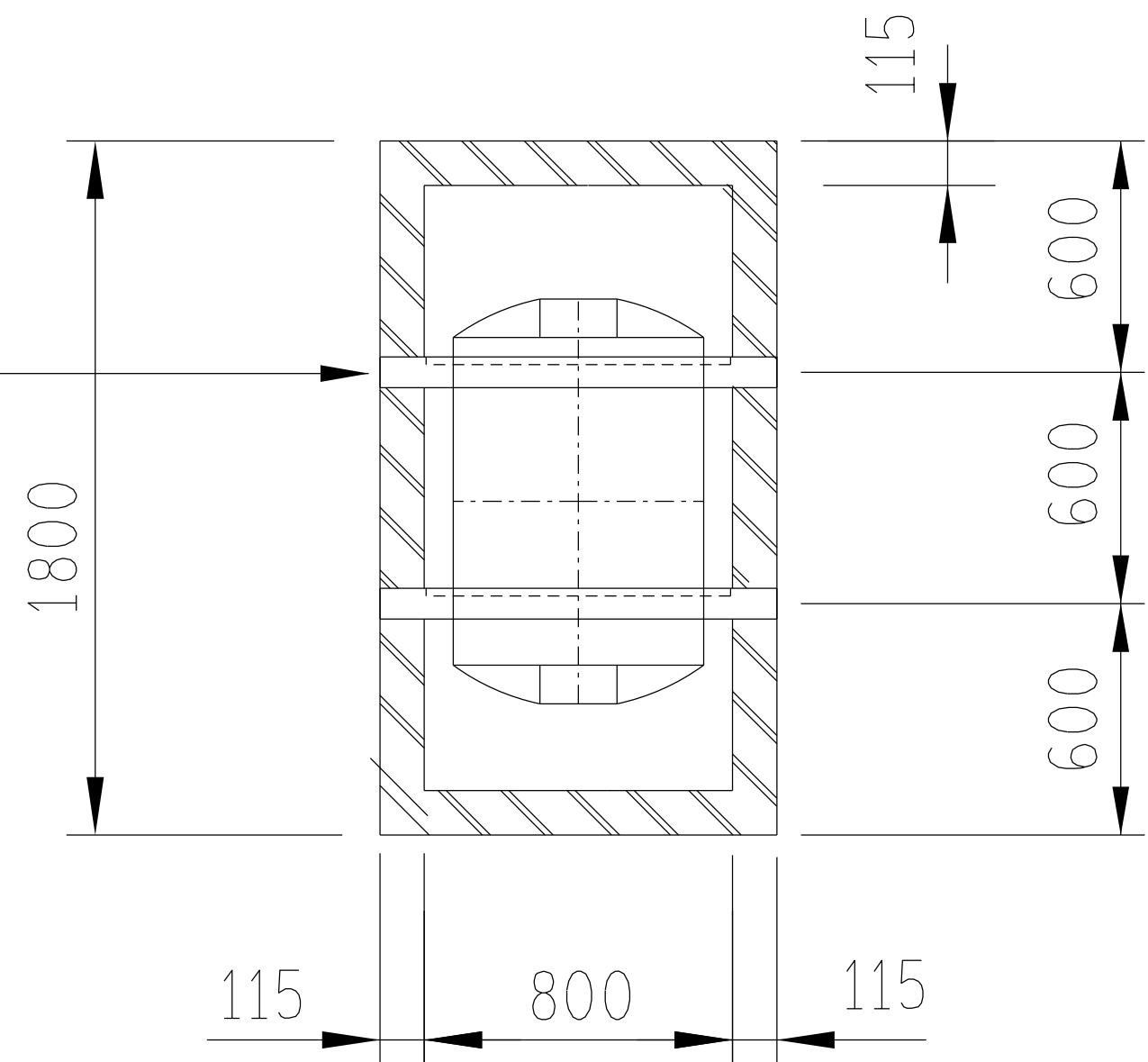


12345678

A

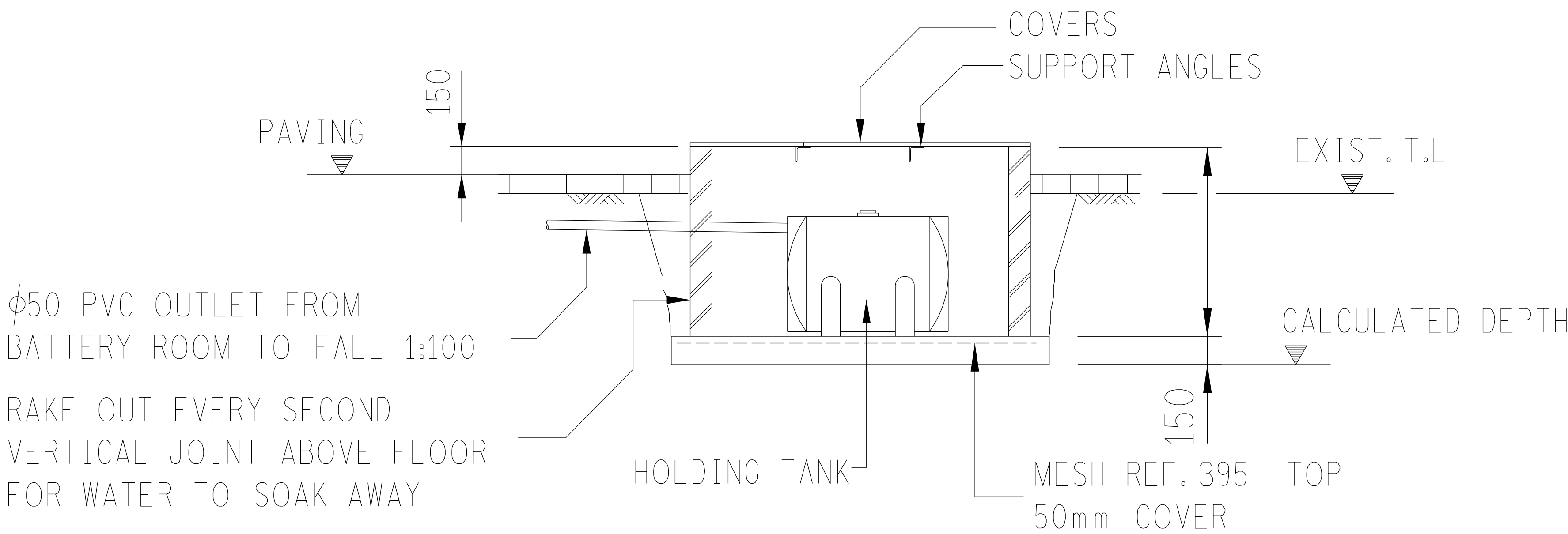
80 x 80 ANGLES 1030mm LONG -
2 OFF, PLACED AS SHOWN TO RECEIVE 1m WIDE COVERS
THE SIDES OF ANGLES TO BE CUT SHORT 120mm
TO LAY ON TOP OF BRICK OR
WALLS TO BE CUT TO RECEIVE ANGLES
TOP OF ANGLE TO BE FLUSH WITH TOP OF WALL

ANGLES TO BE PREPARED FOR PAINTING AND PAINTED WITH
UNIVERSAL PRIMER FOR STEEL
2 COATS ENAMEL BLACK



PLAN ON BATTERY ROOM OUTLET TANK

DEPTH OF FLOOR TO BE
CALCULATED FOR PVC TO
CONNECT AT TOP INLET OF TANK



SECTION

FOUNDATION SLAB

REINFORCED CONCRETE SLAB TO FOUND ON COMPETEND FOUNDING MATERIAL
WITH BEARING CAPACITY OF 80KPa.
IF FOUNDING MATERIAL IS NOT ACHIEVED

OVEREXCAVATE 500mm AND SPOIL OR MIX WITH 3% CEMENT.
IF IN-SITU MATERIAL CAN NOT BE USED, SPOIL AND IMPORT SELECTED G5 MATERIAL
TO BACKFILL AND COMPACT IN MAX. 150mm LAYERS TO 95% MOD AASHTO DENSITY.

BRICK BUNDWALL

BRICKS TO BE CLAY FACEBRICK CLASS "FBX" TO SABS 227 IN CLASS II MORTAR.
FACEBRICK TO BE FLUSH JOINTED ON THE INSIDE WITH EVERY SECOND VERTICAL JOINT OPENED NEAT
BRICKWORK TO BE REINFORCED WITH 150mm "BRICKFORCE" REINFORCEMENT TO FIRST FIVE COURSES ABOVE SLAB.
BUNDWALL TO BE PERFECTLY LEVEL AND SMOOTH ON TOP TO RECEIVE COVERS

COVERS

COVERS TO BE 12mm THICK FIBRE CEMENT NUTEC FLAT SHEET 12MD.
SIZE OF COVER TO BE 0,6 x 1m - 3 OFF.

HOLDING TANK

ROTOTANK TYPE H220lt
CHEMICAL MEDIUM
850 L x 645 W x 610 H

FINAL DESIGN
FOR CONSTRUCTION

NOTES

ALL WORK TO SANS 10400-1990-2, SANS1200 & NATIONAL PREAMBLE OF TRADES.
ALL WORK AT LEAST COMPLIES WITH THE "ACCURACY IN BUILDINGS" SANS 10155-1980-1,
GRADE OF ACCURACY 2, UNLESS OTHERWISE SPECIFIED.

REV	REVISION DESCRIPTION		DRAWN	CHKD	AUTH	DATE	REFERENCE DRAWINGS
APPROVED BY 			 Eskom			Eskom Holdings SOC Ltd Reg No 2002/015527/30	
DATE 25-6-2021							
CHECKED BY 			SUBSTATION STANDARD CONTROL BUILDING BATTERY ROOM WATER OUTLET HOLDING TANK PLAN, DETAILS AND SPECIFICATUINS				
DATE 25-6-2021							
DRAWN BY  DB NAUDE							
DATE 25-6-2021						SHEET NUMBER	REVISION
SCALE AS SHOWN						0.54/1150	76 0

12345678

SIZE A3L
GROOTTE