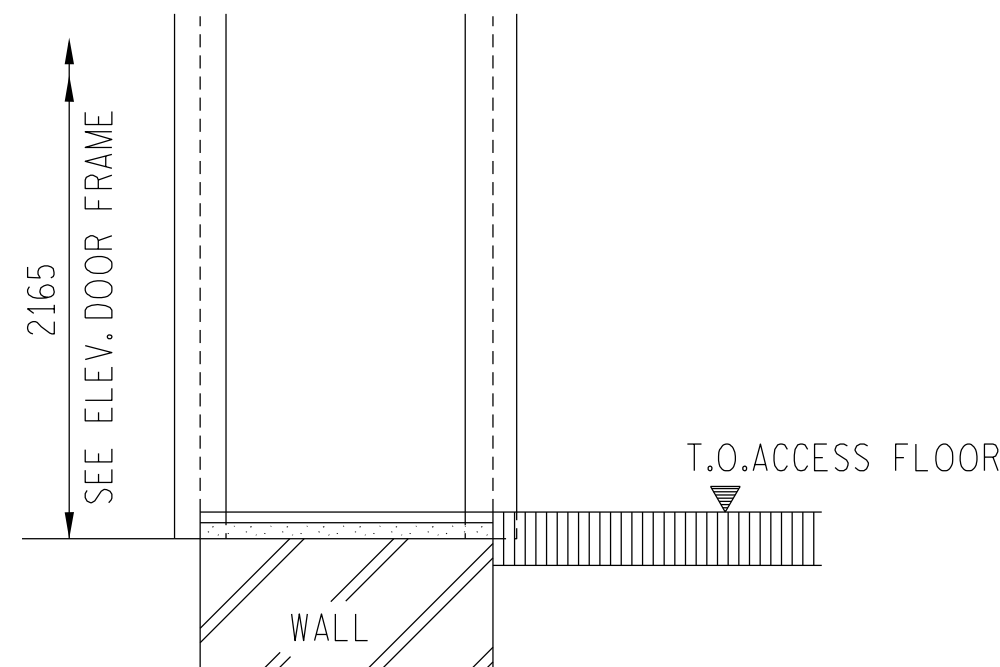


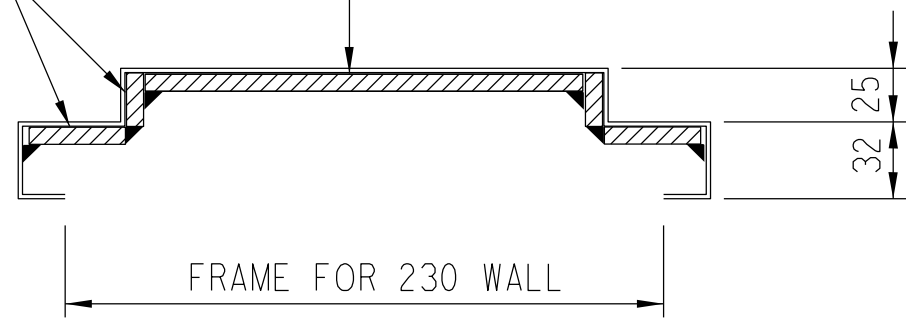
ELEV. DOOR FRAME - D5

1:50

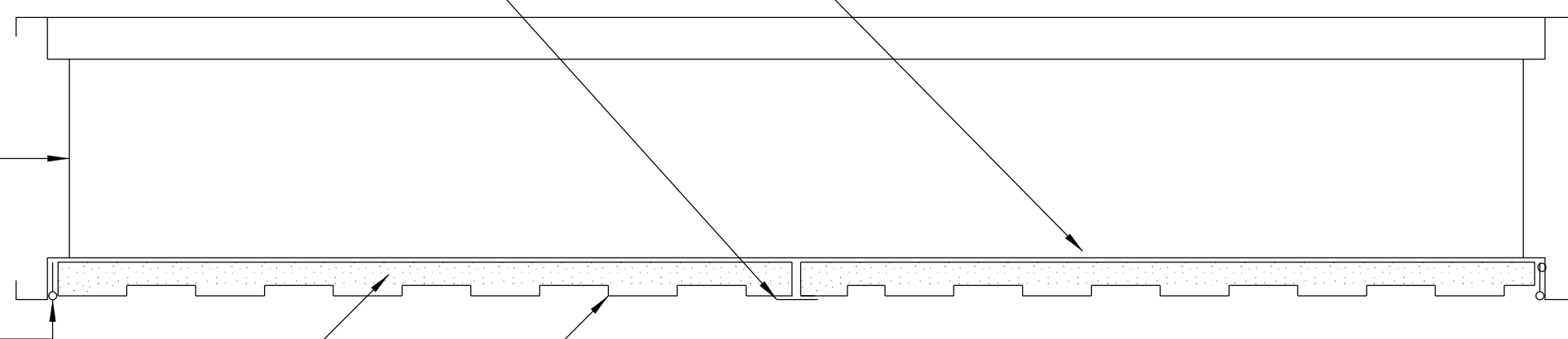


SECTION B-B

1:10



1:5



N.T.S.

FRAME

- NEOPRENE 25 SEAL OF SUITABLE THICKNESS TO BE FITTED TO THE 25mm REBATE TO PROVIDE A DUST PROOF SEAL WHEN THE DOOR IS CLOSED.

DOOR

- THE DOOR SHALL BE 46mm THICK AND MANUFACTURED FROM 2mm PRE-GALVANISED STEEL SHEET.
- THE EXTERIOR FACE OF THE DOOR SHALL BE FORMED FLUSH PROFILE TURNED AROUND THE VERTICAL EDGES TO CREATE A FLUSH EXTERIOR
- THE INTERIOR OF THE DOOR SHALL BE LINED ON THE INSIDE WITH IM475 (ENERGYLITE) FIBREGLASS INSULATION
- THE INTERIOR SHEET MUST BE RIVETTED TO THE VERTICAL EDGES AND TO THE TOP & BOTTOM CAPPING
- A CONTINUOUS ALUMINIUM SLAM BAR IS TO BE FITTED TO THE OUTSIDE OF THE SECOND CLOSING LEAF - DOOR D1

HINGES

ONLY INSTALL STAINLESS STEEL
ROLLER BEARING HINGES

DOOR D1	DOOR D5
3 HINGES TOP	2 HINGES TOP
1 HINGE MIDDLE	1 HINGE MIDDLE
1 HINGE BOTTOM	1 HINGE BOTTOM

IRONMONGERY

DOOR - 01
1 PAIR DORMA CH875 STAINLESS STEEL LEVER FURNITURE ON 150 x 75mm BACKPLATE
FOR EURO PROFILE CYLINDERS (STAINLESS STEEL)
1 DORMA D0338 REBATE CONVERSION KIT FOR EURO-PROFILE LOCKS SS
1 DORMA D0365 EURO-PROFILE CYLINDER SASH LOCK SS
1 DORMA D00506501 NICKEL PLATED 65mm FIVE PIN EURO-PROFILE DOUBLE CYLINDER
1 HOWICK H101 150 x 32mm POLISHED BRASS HEAVY DUTY BARREL BOLT, (SAT CHROME)
1 HOWICK H107 150 x 32mm POLISHED BRASS HEAVY DUTY NECKED BOLT, (SAT CHROME)

FIT A CHAIN AND PULL RING TO THE TOP BARREL BOLT OF DOOR D1.
FIT 150mm CHROME PLATED CABIN HOOK & EYE ON OUTSIDE OF BOTH LEAFES.
HOOK ON MERANTI BLOCK, PLUGGED AND SCREWED TO WALL.

DOOR FITTED WITH ADDITIONAL BRASS HEAVY
DUTY HASP AND STAPLE - DRILLED OUT TO 14mm.

DOOR - D5
1 PAIR DORMA CH875 STAINLESS STEEL LEVER FURNITURE ON 150 x 75mm BACKPLATE
FOR EURO PROFILE CYLINDERS (STAINLESS STEEL)
1 DORMA D0365 EURO-PROFILE CYLINDER SASH LOCK SS
1 DORMA DKC 056051 NICKLE PLATED 65mm FIVE PIN EURO-PROFILE KNOB CYLINDER
FIT 150mm CHROME PLATED CABIN HOOK & EYE ON OUTSIDE. HOOK ON MERANTI BLOCK, PLUGGED AND SCREWED TO WALL.
FIT DORMA DDS-SS-020 STAINLESS STEEL WALL BUFFER.

PAINTING

FINAL CLEANING AND PAINTING OF DOOR SHALL BE DONE AFTER FINAL INSTALLATION OF DOOR AND FITTINGS. SURFACE PREPARATION IS IMPORTANT BEFORE APPLYING PAINT. SURFACES TO BE CLEAN, DRY AND FREE FROM DUST AND OIL. WORK WELL OVER SURFACES PLASCON CLEANER FOR GALVANISED IRON TO MANUFACTURERS SPECIFICATIONS. APPLY ONE COAT PLASCON PRIMER FOR GALVANISED IRON TO MANUFACTURERS SPECIFICATION. SEE FINISHES SCHEDULE FOR PAINT TYPE AND COLOUR.

SUBSTATION STANDARDS

CONTROL BUILDING
PURPOSE MADE STEEL DOORS

0.54/1150

10

SIZE
GROOTTE A1L