

A

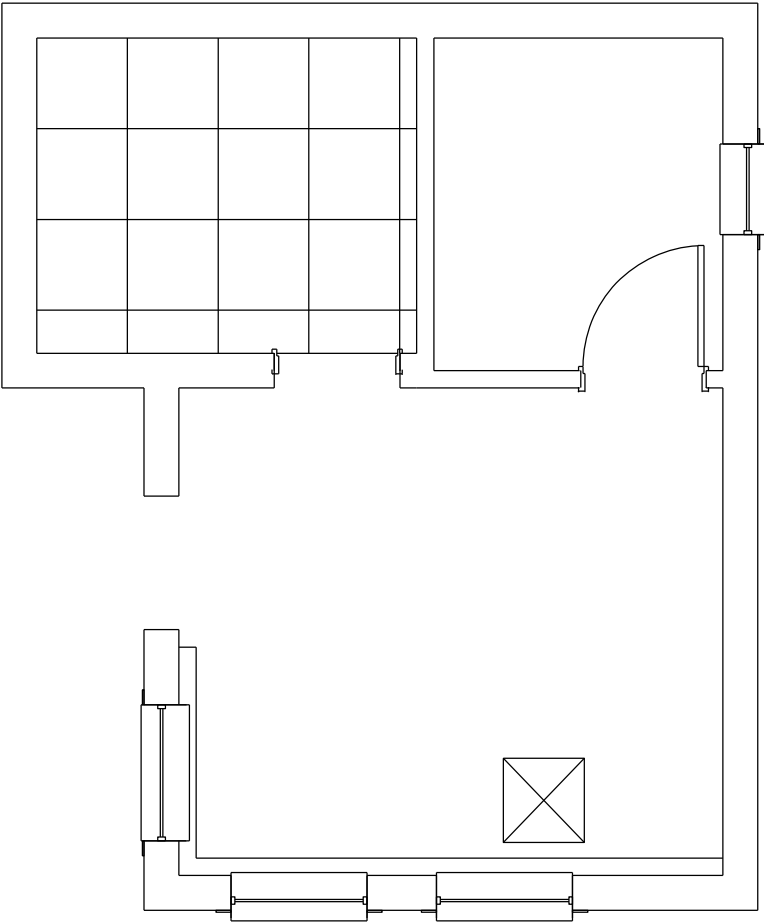
B

C

D

E

F



NOTES

SUPPLY AND INSTALL BERGVIK'S ISO FLOOR RAISED FLOOR SYSTEM.

ASSEMBLIES COMPOSED OF MODULAR AND SELF-SUPPORTING FLOOR STRUCTURE BOLTED TOGETHER, HAVING GRAVITY PLACED FLOOR PANELS ON TOP NOT CONNECTED TO THE PEDESTAL SUPPORTS. LATERAL STRENGTH OF FLOOR SYSTEM SHALL BE INDEPENDENT FROM FLOOR PANELS BEING IN PLACE OR REMOVED.

FLOOR UNDERSTRUCTURE SHALL CONSIST OF 80 x 40mm PRIMARY AND SECONDARY LAYER TUBE STEEL SECTIONS BOLTED TOGETHER 90 DEGREES PERPENDICULAR TO EACH OTHER WITH ANGLE CLIPS AND SELF TAPPING SCREWS. PEDESTAL ASSEMBLY SHALL CONSIST OF BASE, 80 x 40mm TUBE COLUMN AND HEAD CAP INCLUDING HEAD BRACKET WITH PROVISIONS FOR HEIGHT ADJUSTMENT, MADE OF STEEL.


ACCESS FLOOR SYSTEM MUST BE CAPABLE OF SUPPORTING A UNIFORMLY DISTRIBUTED LOAD OF 7,2KN/M SQ.

THE 600 x 600 x 38 WOOD-CORE PANELS ARE TO BE COVERED WITH FACTORY APPLIED HIGH PRESSURE WHITE COLOURED LAMINATE.

SUPPLY PANEL LIFTING DEVICE

FLOOR SYSTEM ONLY TO BE INSTALLED BY A MANUFACTURERS AUTHORIZED REPRESENTATIVE TO PRODUCE A RIGID, FIRM INSTALLATION THAT COMPLIES WITH PERFORMANCE REQUIREMENTS AND IS FREE OF INSTABILITY, ROCKING, RATTLES AND SQUEAKS.

INSTALLATION TO BE CARRIED OUT STRICTLY TO THE MANUFACTURERS INSTALLATION PROCESS. MANUFACTURER TO SUPPLY ESKOM WITH A DETAILED WARRANTY DATED AND SIGNED BY AUTHORIZED OFFICER. CONTACT PERSON - SCHALK VAN DER MERWE 021 905 7900/1/3 OR 082 460 7500

0						SHT 1	PLAN
REV	REVISION DESCRIPTION	BY	CHKD	AUTH	DATE	REFERENCE DRAWINGS	
APPROVED BY					ESKOM HOLDINGS LIMITED REG NO. 2002/015527/06		
DJ SENEKAL							
DATE 29-8-2018		TRANSMISSION SUBSTATIONS ACCESS CONTROL BUILDING - 2011 PANEL ROOM ACCESS FLOOR LAYOUT, DETAILS AND SPECIFICATIONS					
CHECKED BY							
DBN							
DATE 29-8-2011							
DRAWN BY							
DB NAUDE		© 0.54/7515			SHEET NUMBER		REVISION
DATE 12/7/2011					5		0
SCALE							