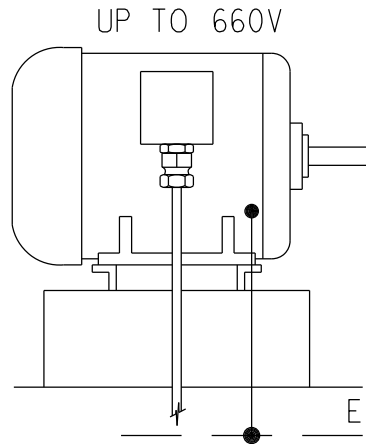
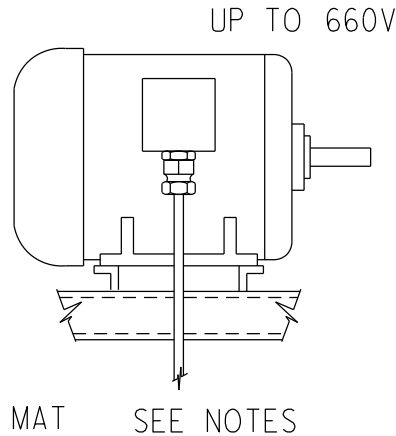


MOTORS FED BY XLPE OR THERMOPLASTIC INSULATED CABLES

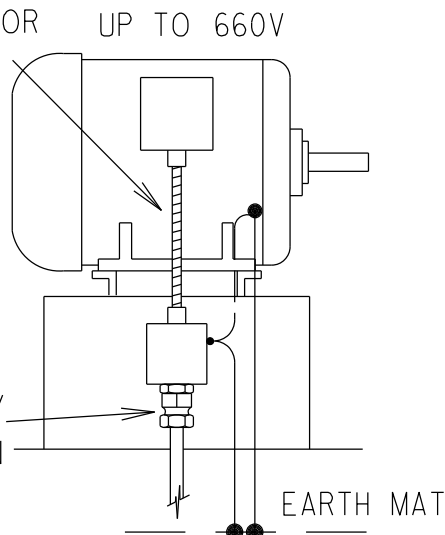
MOTORS MOUNTED ON
UNEARTHED MATERIAL



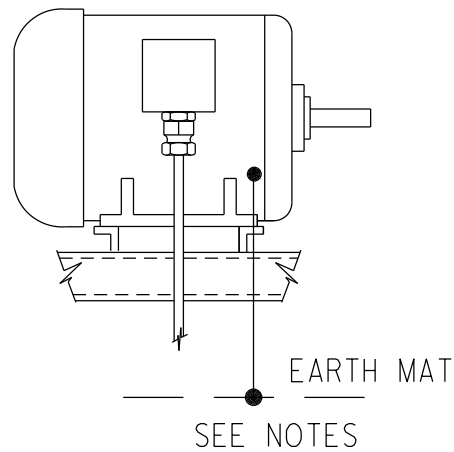
MOTORS MOUNTED ON
EARTHED MATERIAL



FLEXIBLE
CONDUIT OR
CABLE OF
SMALLER
RATED
AREA



ABOVE 660V

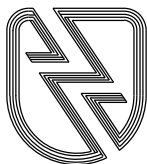


FLEX EARTHTAIL <1000 mm
THEN ONTO COPPER

NOTES:

1. MOTORS MOUNTED ON EARTHED STEELWORK AND CONNECTED WITH UNARMoured CABLES SHALL BE EARTHED TO EARTHMAT. WHERE A DEDICATED CORE IS PROVIDED FOR EARTHING PURPOSES, THIS CORE IS TO BE CONNECTED TO AN INTERNAL EARTHING POINT.
2. FOR EARTHING OF LARGE MOTORS REFER TO SPECIFIC EARTHMAT LAYOUT DRAWINGS.
3. FOR MOTORS FED BY CABLES UP TO 16 mm² A FOURTH CABLE CAN BE USED AS EARTH CONTINUITY CONDUCTOR. FOR MOTORS FED BY CABLES >25 mm² A SEPARATE LOCAL EARTH CONNECTION IS REQUIRED.

THE C.A.D. REFERENCE NUMBER IS:
[100,164]00393EP02.R01



ESKOM

DRAWN
GETEKEN

CHKD
NAGES

AUTH
MAS

DvB
FEB 88

BS
FEB 88

REV

1

DATE
DATUM

10.11.
1988

EARTHING STANDARDS

0.54/393

SHEET P2

DRG.TEK
REGISTR

393P02.DGN