

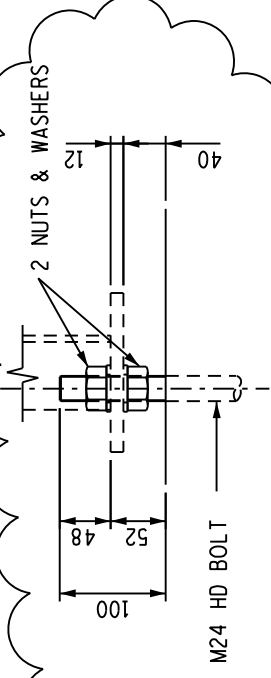
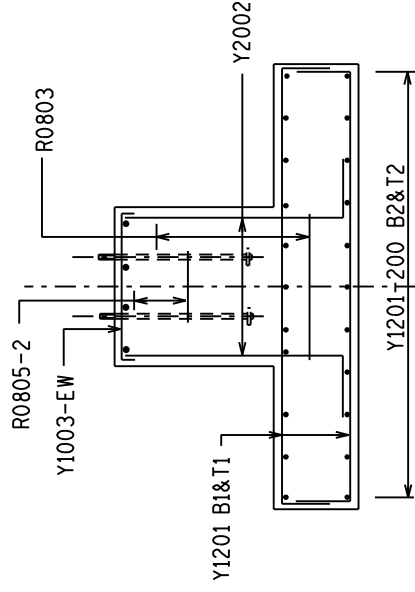
THIS DRAWING HAS BEEN CREATED
ON A C.A.D. SYSTEM AND ANY
AMENDMENT TO THE DRAWING
MUST BE EFFECTED ONLY
ON THE SAME C.A.D. SYSTEM

H.D. BOLT DETAIL - 4 OFF

SUPPLY TWO NUTS AND WASHERS

MASS OF ONE BOLT COMPLETE
WITH 2-OFF NUTS & WASHERS = 3,12Kg

PLOT SCALE: 250



DETAIL 1

ITEM AND No OFF	BARS						TOTAL LENGTH m	CUTTING LENGTH mm	SA CODE	STANDARD SHAPES BENDING DIMENSIONS		
	Y OFF	• ID	MK.	No OFF PER TOTAL ITEM	No OFF	mm				A	B	R
BASE. 1 OFF.	Y 12	01			44	2500		38	270	2000		
	Y 20	02			12	B		37	A	-		
	Y 10	03			8	900		35	630	650		
	R 08	04			C	2800		60	650	330		
	R 08	05			2	1550		60	330	330		


A = VARIABLE PLINTH HEIGHT + 270

$$B = A + 570$$
$$C = (B/300) + 1$$

NOTES:

1. CONCRETE STRENGTH AT 28 DAYS/STONE SIZE: BLINDING = 15/49 FOUNDATIONS = 25/19
2. MIN. CONCRETE COVER TO REINFORCEMENT = 50 mm.
3. a.) H.D.BOLTS SUPPLIED BY CIVIL CONTRACTOR COMPLETE WITH NUTS AND WASHERS TO BE HOT DIPPED GALVANISED TO SABS 763
b.) THREADS OF NUTS TO BE OVER-CUT TO SABS 763 TO ALLOW FOR THICKNESS OF GALVANISING
4. FORMWORK TO EXTEND AT LEAST 150mm BELOW GROUND LEVEL.
5. ALL WELDING AND WELDING SYMBOLS TO S.A.B.S. 044
6. STEEL TEMPLATE TO BE USED FOR SETTING H.D.BOLTS
7. ALL TOP EDGES OF CONCRETE TO HAVE 20x20 CHAMFERS
8. ALL WORK TO BE IN ACCORDANCE WITH SABS 1200 SERIES SPECIFICATION
9. CONCRETE FINISH : TOP OF FOUNDATION – WOOD FLOAT FINISH
: SIDES – SMOOTH OFF SHUTTER FINISH

4	DJCS	25/6/13	HD BOLT REVISED AND DETAIL 1 ADDED	PHD	DBJA
3	DJCS	11/6/02	BOLT THREAD SIZE CHANGED	DBN	DBJA
2	DJCS	3/01	HD BOLT DETAIL AND NOTE - 7 CHANGED	DBN	DBJA
1	DJCS	3/99	REINFORCEMENT AND NOTES REVISED	DJCS	DBJA
0			FIRST ISSUE / EERSTE UITLIJNING		
REV	AUTH MAG	DATE	REVISIONS/REVIEWS	BY	CHD NACES
			INDEX REF / INDEX/VERW	DEUR	0.54 / VERVY'S INSTEKENINGE
				4320	STEELWORK

DIRECTIE REGISTR.						TRANSMISSION	 ESKOM		GOEDKEURER K.M. PEACOCKE	REV	4
						SUBSTATION					
						TECHNOLOGY					
						DEPARTMENT					
	A.J.S.G.	01.07. 1993									
CHKD NAGES	I.HILL	01.07. 1993									
DRAINN GE TEKEN	CAROL H	03.05. '93				APPROVED					
						Mvan den ENDE					
SCALE	1:20										
SKAAL						02.07.93					
						02.07.93					