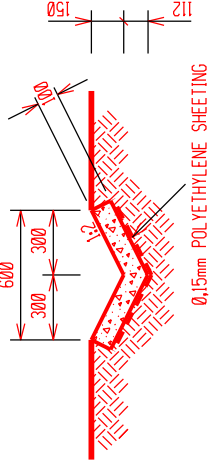
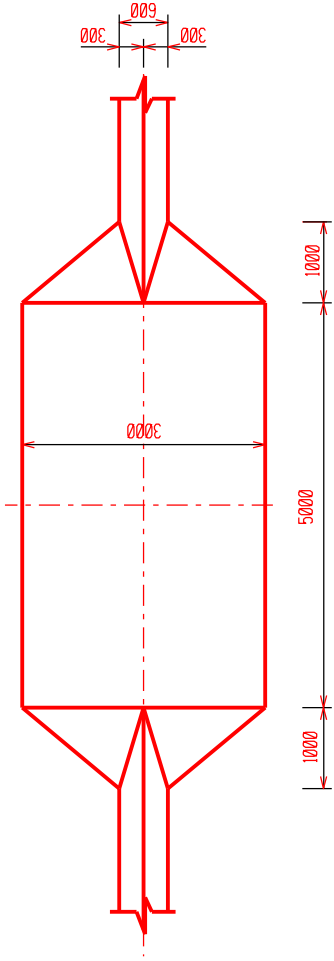


100mm THICK x 20MPa CONCRETE WITH SMOOTH SURFACE
FINISH 150mm THICK

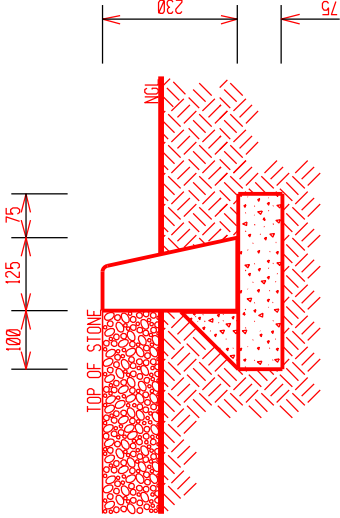
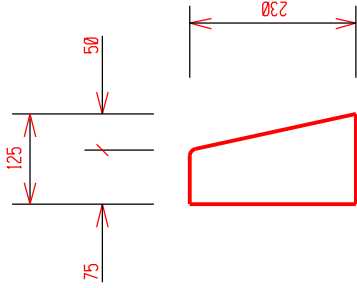


FORM CONSTRUCTION JOINTS AT 5000mm CENTRES USING 10mm POLYSTYRENE SHEET CUT TO SUITE. JOINTS TO BE RAKED OUT 15mm DEEP AND SEALED WITH A SUITABLE MASTIC SEALER FINISHED FLUSH TO TOP OF FINISHED CONCRETE.
CONCRETE = 0.067 cu.m/m

SECTION - TYPE 'VI' DRAIN
NTS

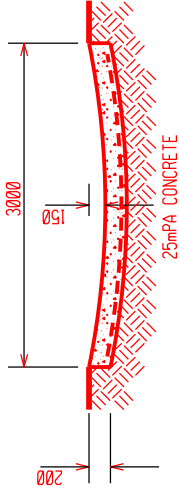


PLAN - CONCRETE DRIFT
NTS



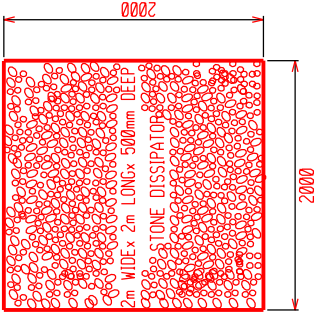
CONCRETE FILLET TO BE PLACED AT 150mm
ON BOTH SIDES OF ALL JOINTS
FOUNDATION CLASS 20MPa

PRECAST KERB DETAIL
NTS



MESH REF.245 WITH
50mm BOTTOM COVER
CONCRETE = 0.604 cu.m/m

SECTION - CONCRETE DRIFT
NTS



DISSIPATOR
NTS

| | | | | | | | |
|---|--|------------|--|----------|--|----------|--|
| UNKOMAAS SUBSTATION | | | | ER00779 | | | |
| MISCELLANEOUS- CIVILS | | | | 20 09 00 | | | |
| SURFACE DRAINAGE SECTIONS AND TYPICAL DETAILS | | | | 20 09 00 | | | |
| CHECKED | | AUTHORISED | | SET | | REVISION | |
| G Pillay | | PD Chetty | | 20 09 00 | | 20 09 00 | |
| 29/01/2021 | | 01/02/2021 | | 20 09 00 | | 20 09 00 | |
| DRAWN | | ESKOM | | 20 09 00 | | 20 09 00 | |
| SC Zulu | | 01/02/2021 | | 20 09 00 | | 20 09 00 | |
| SCALE | | 1:50 | | 20 09 00 | | 20 09 00 | |
| FIRST ISSUE | | 29/01/21 | | 20 09 00 | | 20 09 00 | |
| REVISION DESCRIPTION | | DATE | | 20 09 00 | | 20 09 00 | |
| REV | | CHKD | | 20 09 00 | | 20 09 00 | |
| SCZ | | CP | | 20 09 00 | | 20 09 00 | |
| 00 | | PDC | | 20 09 00 | | 20 09 00 | |
| 01/02/21 | | APPROVED | | 20 09 00 | | 20 09 00 | |
| 29/01/21 | | DATE | | 20 09 00 | | 20 09 00 | |