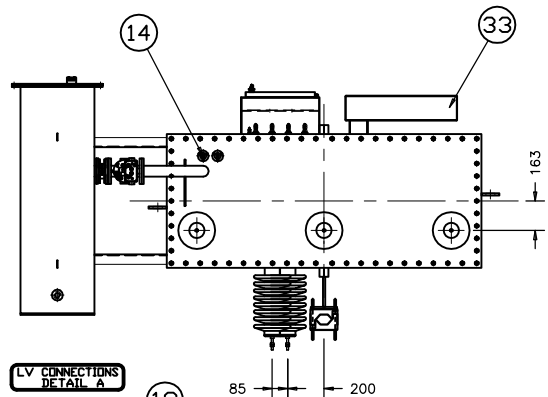
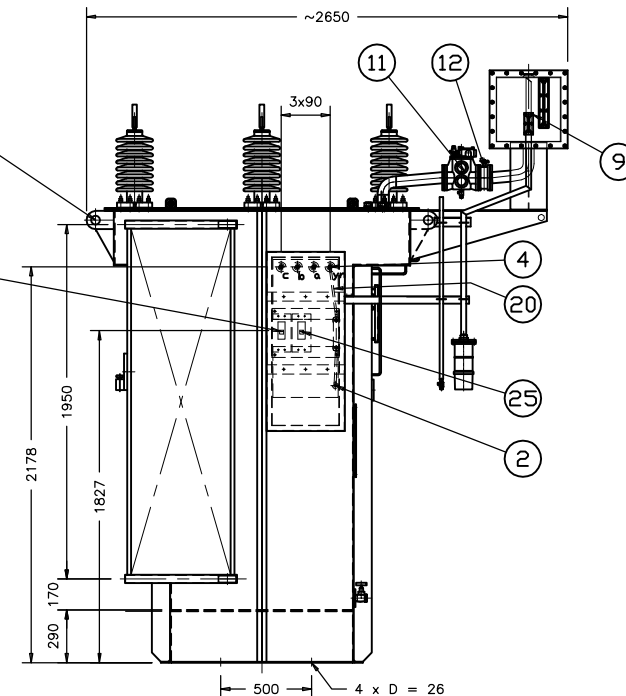
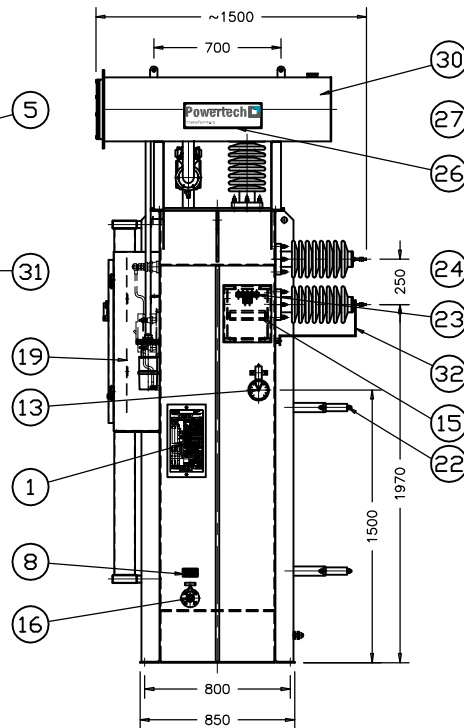
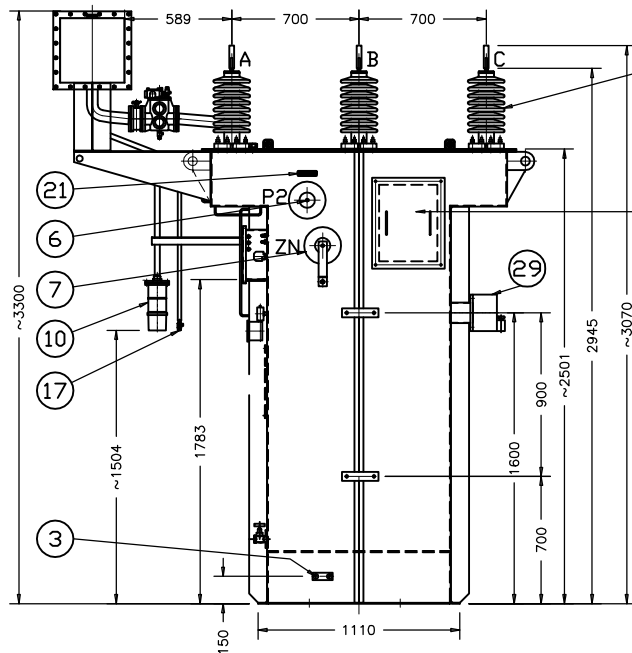


4

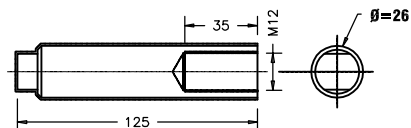
3

2

1



NB : TO BE ELECTRO TINNED



FAULT CURRENT 360A  
CONTINUOUS CURRENT 10A  
SHORT TIME 10 Sec  
AUX TRF RATING 100 kVA  
MV VOLTAGE 22000 V  
LV VOLTAGE 400 V  
VECTOR GROUP Dyn 11

**MASSSES**  
CORE & WINDINGS 1050 kg  
TANK & FITTINGS 1275 kg  
OIL 1225 kg  
TOTAL 3550 kg  
OIL IN LITRES 1375 l

#### FITTINGS

- |                              |                             |
|------------------------------|-----------------------------|
| 1. RATING & DIAGRAM PLATE    | 17. GAS RELEASE COCK        |
| 2. EARTHING BOSS             | 18. POST BUSHING            |
| 3. EARTHING PAD              | 19. BAKELITE BARRIERS       |
| 4. LV BUSHING                | 20. NEUTRAL CABLE           |
| 5. HV BUSHING                | 21. P2 LABEL                |
| 6. P2 BUSHING                | 22. CABLE CLAMP             |
| 7. ZN BUSHING                | 23. CT TERMINALS            |
| 8. DRAIN & OIL SAMPLE LABEL  | 24. MCCB BREAKER 100A       |
| 9. OIL LEVEL INDICATOR       | 25. MCCB BREAKER 50A        |
| 10. BREATHER                 | 26. IDENTIFICATION PLATE    |
| 11. BUCHHOLZ RELAY           | 27. TRANSFORMER LIFTING LUG |
| 12. BUCHHOLZ ISOLATING VALVE | 28. NEUTRAL LINK            |
| 13. TOP OIL THERMOMETER      | 29. PRESSURE RELIEF VALVE   |
| 14. THERMOMETER POCKET       | 30. CONSERVATOR             |
| 15. MARSHALLING BOX          | 31. INSPECTION COVER        |
| 16. DRAIN VALVE & PLUG       | 32. LINK                    |
|                              | 33. RADIATOR                |

COMBINED N.E.C./N.E.R./AUX  
TRANSFORMER TO  
34-1690

NOTE: TANK PAINTED UP DARK  
ADMIRALTY GREY  
CONSERVATOR PAINTED  
UP WHITE  
COASTAL PROTECTION  
ZINK SPRAY TANK & RADIATOR  
STAINLESS BOLTS & NUTS

TOTAL kg X

Qty.	ITEM No.	DRWG. No.	QUAL.	TYPE	SIZE	kg	DESCRIPTION
MATERIALS							
<b>Powertech Transformers</b> FILE No. T-3571 DRAWN BY: SIZWE BRANCH CPT STOCK CODE: BYRON CHKD. BY: BYRON DESCRIPTION: 22kV/360A NEC/NER/AUX Transformer DRAWING No.							<b>OUTLINE &amp; GENERAL ARRANGEMENT</b> SHEET SIZE A3 SHEET No. 1 REV. No. 1
Powertech Transformers P.O. BOX 38354 BOOTHSENS 2016 TEL 011-835 1011 Powertech Transformers P.O. BOX 8627 PRETORIA-WEST 0001 TEL 012-318 9911 Powertech Transformers P.O. BOX 44 EPPINDUST 7475 TEL 021-505 3000							<b>5410-35162</b> 1 CONTINUE

1	CUSTOMER CHANGE	MA	HENNIE	39	2009
Revision No.	Revision	Rev.by	Check	Week	Year

NOTES:  
FOR ITEMS MARKED \* REFER TO SHT 2 & 3  
BEND UP @ 90°  
BEND DOWN @ 90°