

SEE DRAWING  
KBA 00 14 Q 00 010

- LEGEND
- SED PIPE (STORMWATER)
  - SEU PIPE (FOUL WATER)
  - MANHOLE
  - ROAD CULLY
  - FIRE HYDRANT
  - JPD PIPE (FIRE FIGHTING)

NOTE:  
ALL LEVELS RELATE TO G.M.S.L.

FOR DETAILS OF ROADS AND FINISHES SEE KBA 0014 Z01 001

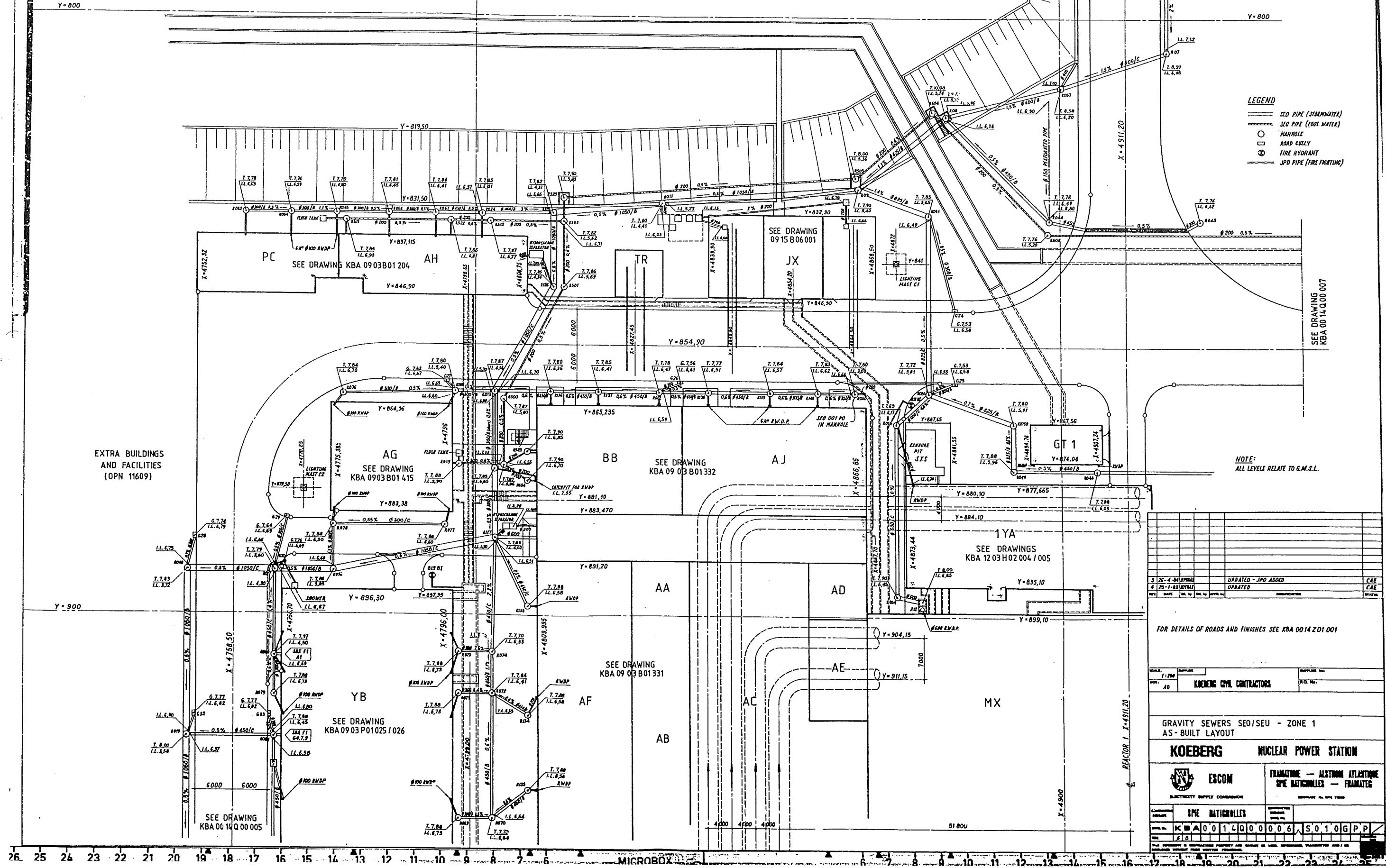
SCALE: 1:250	SUPPLIER:	REVISION:
NO: AD	KOEGER CIVIL CONTRACTORS	REV. NO:

GRAVITY SEWERS SED/SEU - ZONE 1  
AS-BUILT LAYOUT

KOEGER NUCLEAR POWER STATION

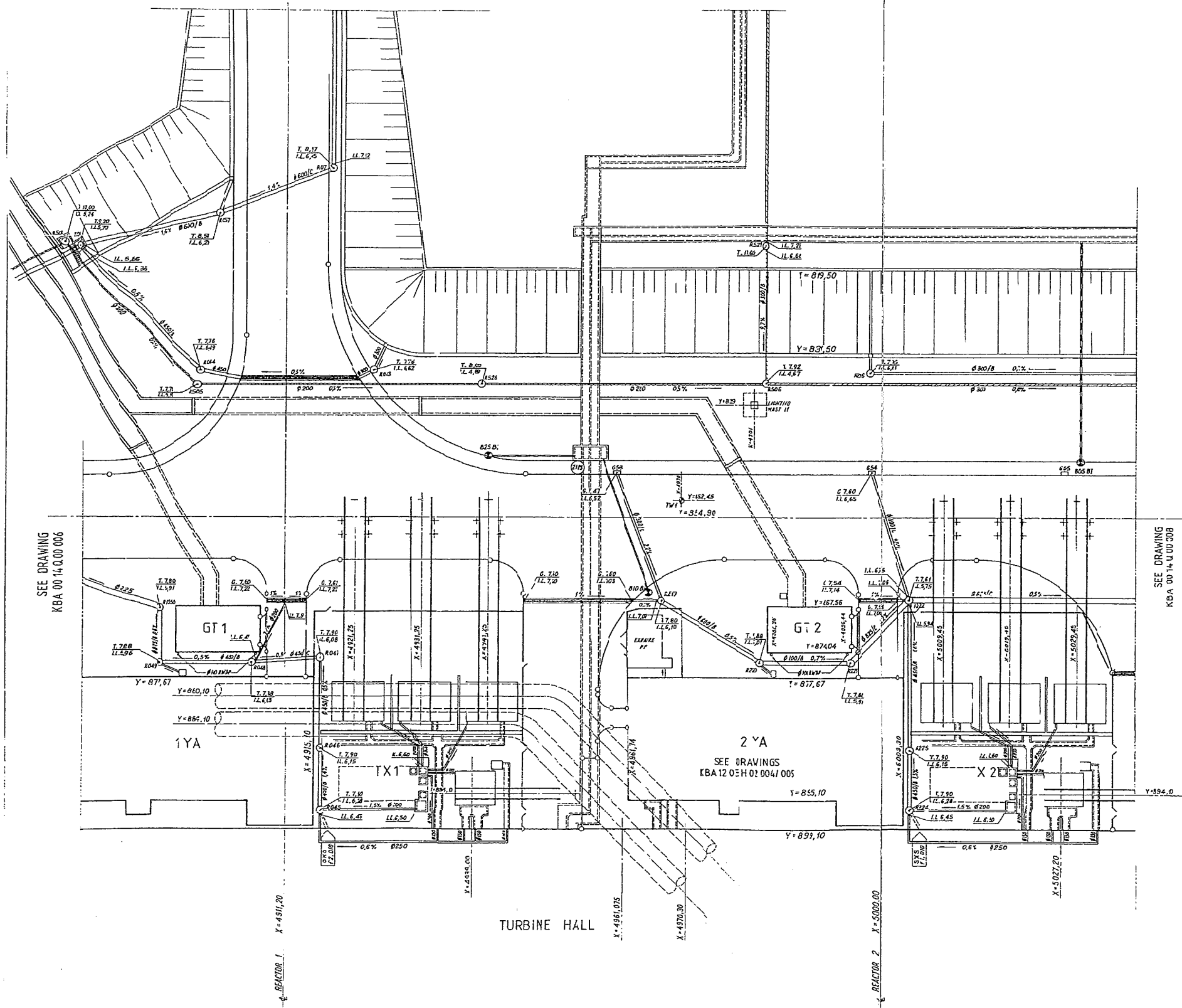
ESCOM ELECTRICITY SUPPLY CORPORATION	FRAMATOME - ALSTHOM ATLANTIQUE SPE BATHINGOLLES - FRAMATOME
---	--

SPE BATHINGOLLES	REVISION:
KBA0014Q000006	S010GP





SEE DRAWING  
KBA 00 14 00 010



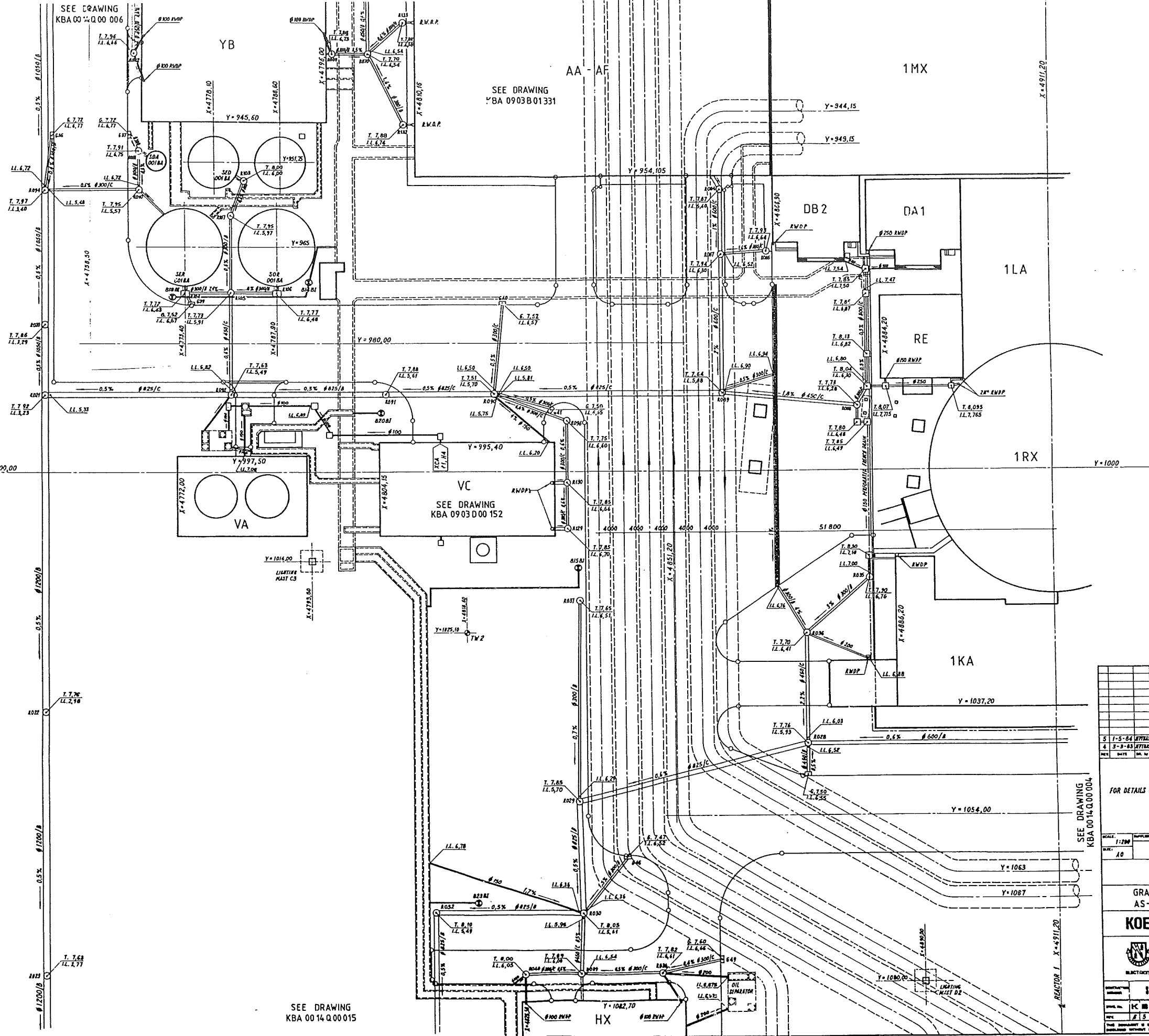
# LEGEND

- SEW LINES (STORMWATER)
- SEW LINES (WASTE WATER)
- MANHOLES
- ROAD VALVES
- FIRE HYDRANTS
- LONG TERM MONITORING WELL
- JO PRESS (FIRE-FIGHTING)

# NOTE

ALL LEVELS RELATE TO G.M.S.L.

3-26-1-84 (MAY)		UPDATER - J.D. ADIE		CAE
1-7-7-83 (MAY)		UPDATER		CAE
REV	DATE	BY	CHK BY	MODIFICATION
FOR DETAILS OF ROADS AND FINISHES SEE DRAWING KBA 00 14 00 002				
SCALE: 1:200		DRAWN BY: KOEBERG CIVIL CONTRACTORS		CHECKED BY:
GRAVITY SEWERS SEW/SEU - ZONE 2 AS-BUILT LAYOUT				
KOEBERG NUCLEAR POWER STATION				
ESCOM ELECTRICITY SUPPLY COMMISSION		FRAMATOME - ALSTHOM ATLASQUE SITE BATHIGNOLLES - IRAMATIS		
CONTRACTOR: IFPE BATHIGNOLLES		CONTRACT NO.: 101010101		
DRAWING NO.: KBA 00 14 00 007		SHEET NO.: 1		
THESE DOCUMENTS ARE THE PROPERTY OF IFPE BATHIGNOLLES AND MUST BE RETURNED TO THEM WITHOUT DELAY.				



- LEGEND**
- SED PIPE (STORMWATER)
  - MANHOLE
  - INTERMEDIATE MANHOLE
  - ROAD GULLY
  - ⊙ FIRE HYDRANT
  - ⊕ LONG TERM MONITORING WELL
  - JPD PIPE (FIRE-FIGHTING)

**NOTE**  
ALL LEVELS RELATE TO G.M.S.L.

REV	DATE	BY	CHK	APP	DESCRIPTION	REVISION
5	1-5-64	UTPLS			UPDATED - JPD ADDED	CAE
4	5-3-63	UTPLS			UPDATED	CAE

FOR DETAILS OF ROADS AND FINISHES SEE DRAWING KBA 0014201004

SCALE: 1"=200'		SUPPLIER: KOEBERG CIVIL CONTRACTORS		SUPPLIER: ESCOM	
GRAVITY SEWERS SED/SEU - ZONE 4 AS-BUILT LAYOUT					
KOEBERG		NUCLEAR POWER STATION			
ESCOM		FRAMATOME - ALSTROM ATLANTIQUE SPE BATHCOLLES - FRAMATOME			
ELECTRICITY SUPPLY COMMISSION		SPE BATHCOLLES			
PROJECT NO: KBA 0014200005		SHEET NO: 10			
DATE: 1-5-64		BY: UTPLS			

SEE DRAWING  
KBA 00 14 Q 00 005

SEE DRAWING  
KBA 00 14 Q 00 015

1KA

BAN

2KA

HX

SEE DRAWING  
KBA 09 11 M 00 214

CA

PA

REACTOR 2  
X=5000

LEGEND

- SEE PIPES (STORMWATER)
- V-CHANNEL TYPE CCY
- MANHOLES
- INTERMEDIATE MANHOLES
- FIRE HYDRANT
- LONG-TERM MONITORING WELL
- ROAD CULVERT
- JPD/JPP PIPES (FIRE-FIGHTING)

NOTE

ALL LEVELS RELATE TO R.M.S.L.

DATE	BY	CHK	APP	DESCRIPTION	STATUS
5-2-84	CAE			REVISED - JPD/JPP ADDED	CAE
4-5-83	CAE			REVISED	CAE

FOR DETAILS OF ROADS AND FINISHES SEE DRAWING KBA 0014 Z01 005

SCALE: 1:200	SUPPLIER: KOEGER CIVIL CONTRACTORS	DATE: 10
--------------	------------------------------------	----------

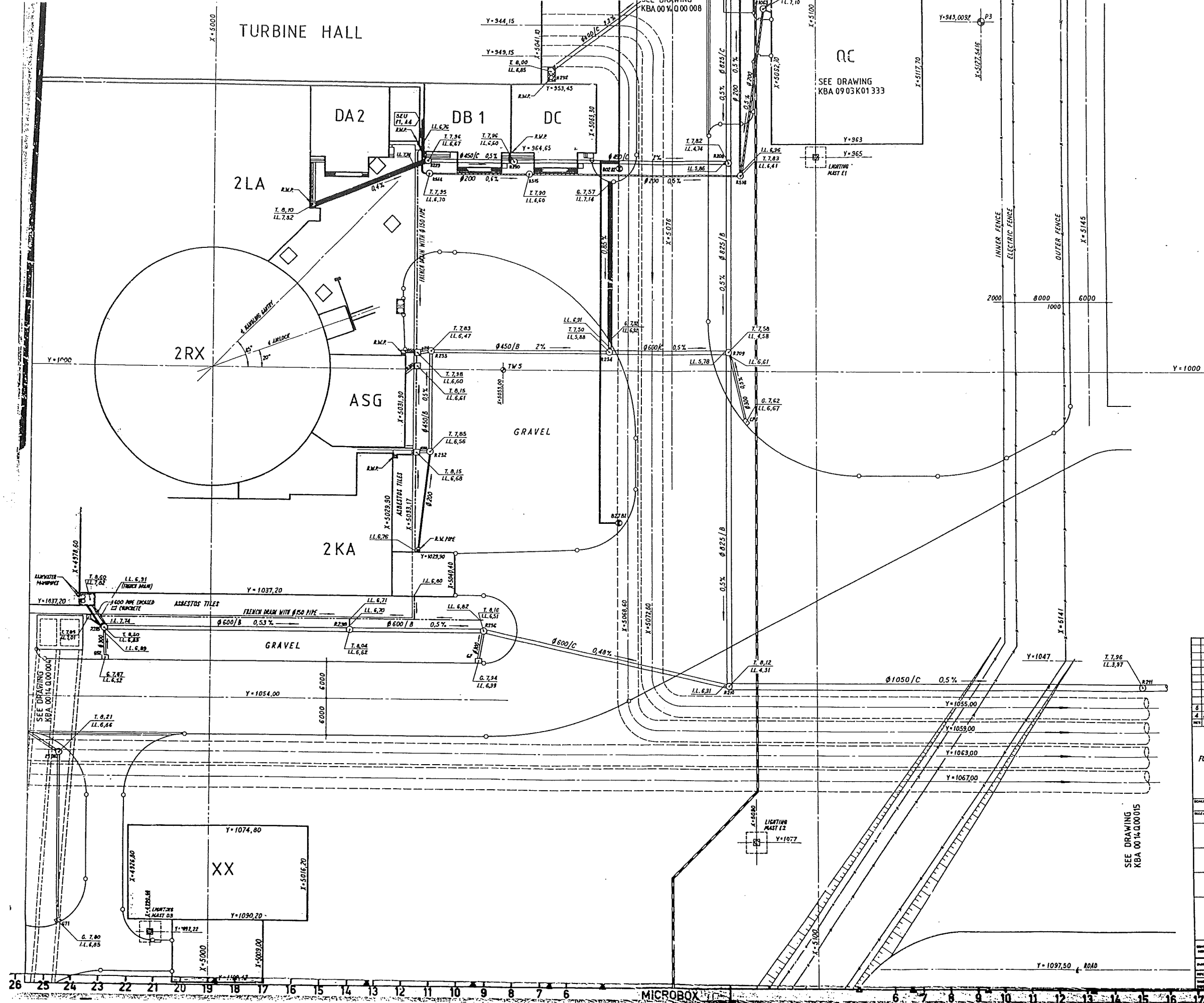
GRAVITY SEWERS SE0/SEU - ZONE 5  
AS-BUILT LAYOUT

KOEGER NUCLEAR POWER STATION

ESCOM ELECTRICITY SUPPLY COMMISSION	FRAMATOME - ALSTOM ATLANTIQUE SPE BATIGNOLLES - FRAMATOME
--	--

SPE BATIGNOLLES	PROJECT NO: KBA 0014 Q 00 004	SO 10 G P P
-----------------	-------------------------------	-------------



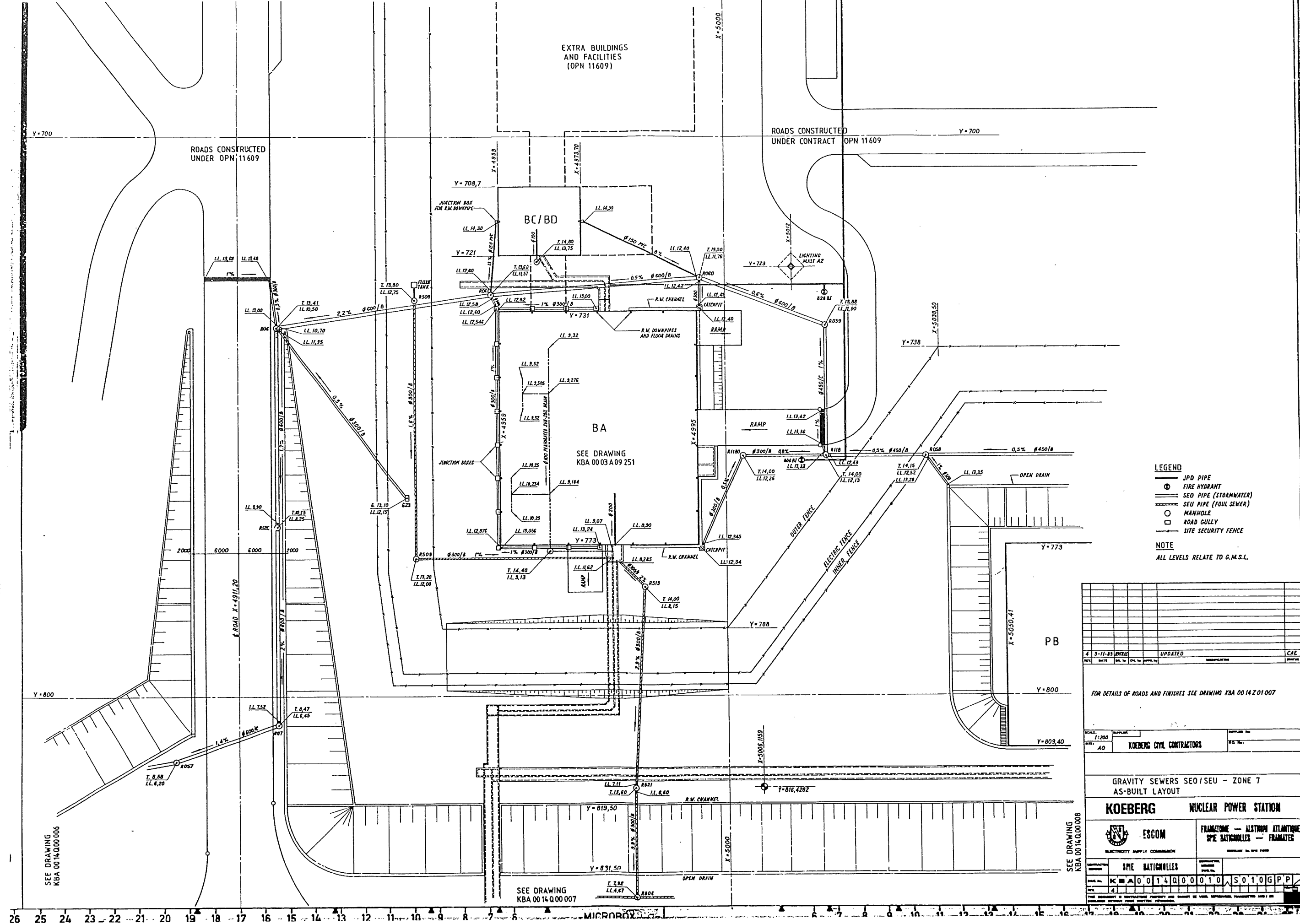


- LEGEND**
- SEU PIPES (STORMWATER)
  - SEU PIPES (FOUR SEWER)
  - FRENCH DRAINS
  - MANHOLES
  - ROAD GULLIES
  - INTERMEDIATE MANHOLES
  - BEACON
  - LONG TERM MONITORING WELL
  - V-CHANNELS
  - SITE SECURITY FENCE
  - FIRE HYDRANT
  - JPO/JPP PIPES (FIRE-FIGHTING)
- NOTE**
- ALL LEVELS RELATE TO G.M.S.L.

6 2-5-84 EPM/CE		UPDATED - JPB/JPP ADDED		CAE
4 21-7-83 EPM/CE		UPDATED		CAE
REV	DATE	BY	CHK BY	APPROV

FOR DETAILS OF ROADS AND FINISHES SEE DRAWING KBA 0014201 008

SCALE: 1:200	SUPPLIER: KOEBERG CIVIL CONTRACTORS	REVISION:
GRAVITY SEWERS SEU/SEU - ZONE 6 AS-BUILT LAYOUT		
KOEBERG		NUCLEAR POWER STATION
ESCOM	FRAMATOME - ALSTOM ATLANTIQUE	
ELECTRICITY SUPPLY COMMISSION		DRAMAIRE - EL. SITE THREE
SPE MATIGNOLLES		
KBA 0014200009 S0106PP		

SEE DRAWING  
C.B. 0017 000008SEE DRAWING  
C.B. 0017 000008

