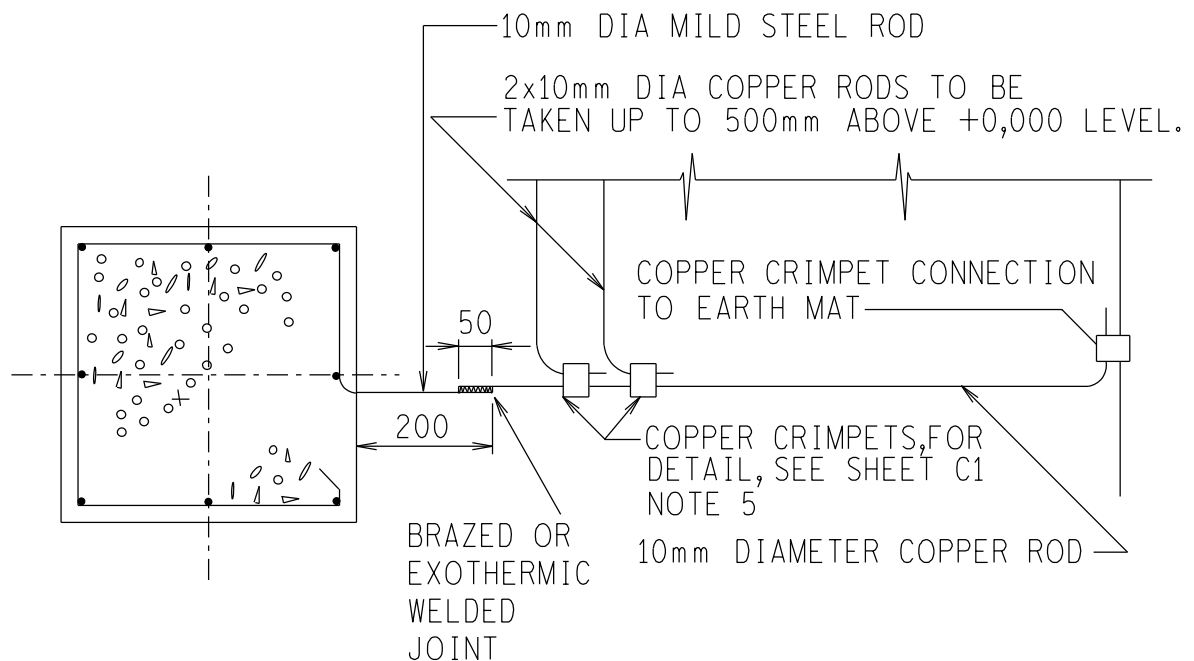


# TYPICAL EARTH MAT CONNECTION TO COLUMN AND TAIL FOR EQUIPMENT EARTHING.



## NOTE:

ONE 10mm DIAMETER REINFORCING ROD TO BE CONNECTED TO MAJOR VERTICAL REINFORCING RODS BY MEANS OF BINDING WIRE AND TO SERVE AS EARTH CONNECTION.

THE FREE LENGTH OF THE MILD STEEL ROD TO BE 200mm OUTSIDE THE CONCRETE. THIS TAIL MUST BE WRAPPED WITH DENSOMASTIC TAPE, OVERLAPPING BY HALF IT'S WIDTH, TO AT LEAST 50mm ON EITHER SIDE OF ITS PENETRATION POINT INTO THE CONCRETE.

THE BRAZED JOINT, OR EXOTHERMIC WELD (SEE NOTE 19 ON SHT C3 ) MUST ALSO BE COVERED WITH DENSOMASTIC TAPE, TO AT LEAST 30mm BEYOND EITHER SIDE OF THE JOINT.

THE C.A.D. REFERENCE NUMBER IS:  
[100,164]00393EC11.R03



ESKOM

DRAWN  
GETEKEN

CHKD  
NAGES

AUTH  
MAS

WN  
AUG 96

REV

3

DATE  
DATUM

2.8.  
1996

# EARTHING STANDARDS

0.54/393

SHEET C11

DRG. TEK  
REGISTR

393C11.DGN