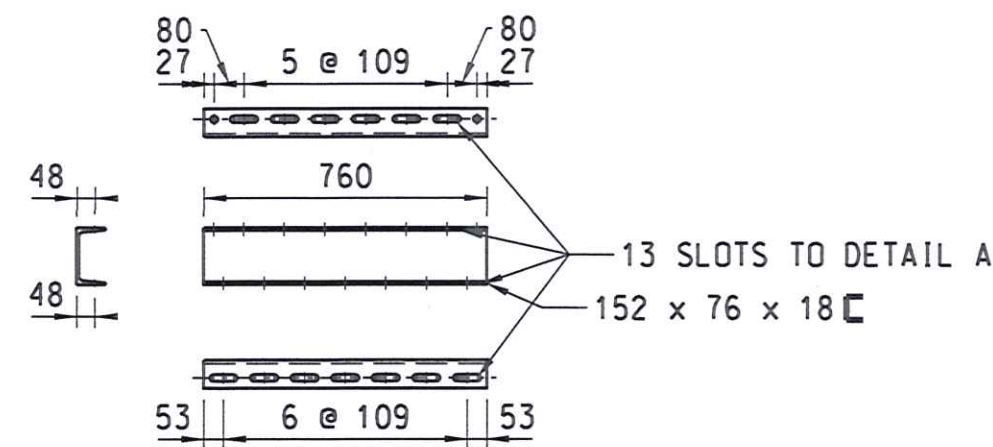
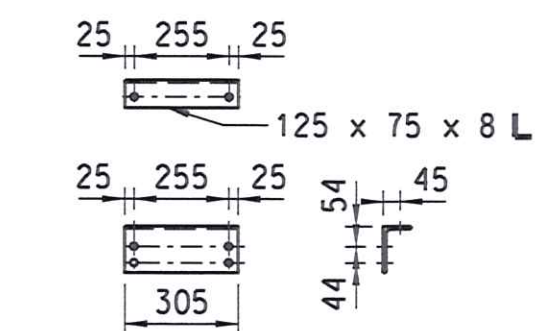


PLAN VIEW



MK ② 2 OFF REQD.

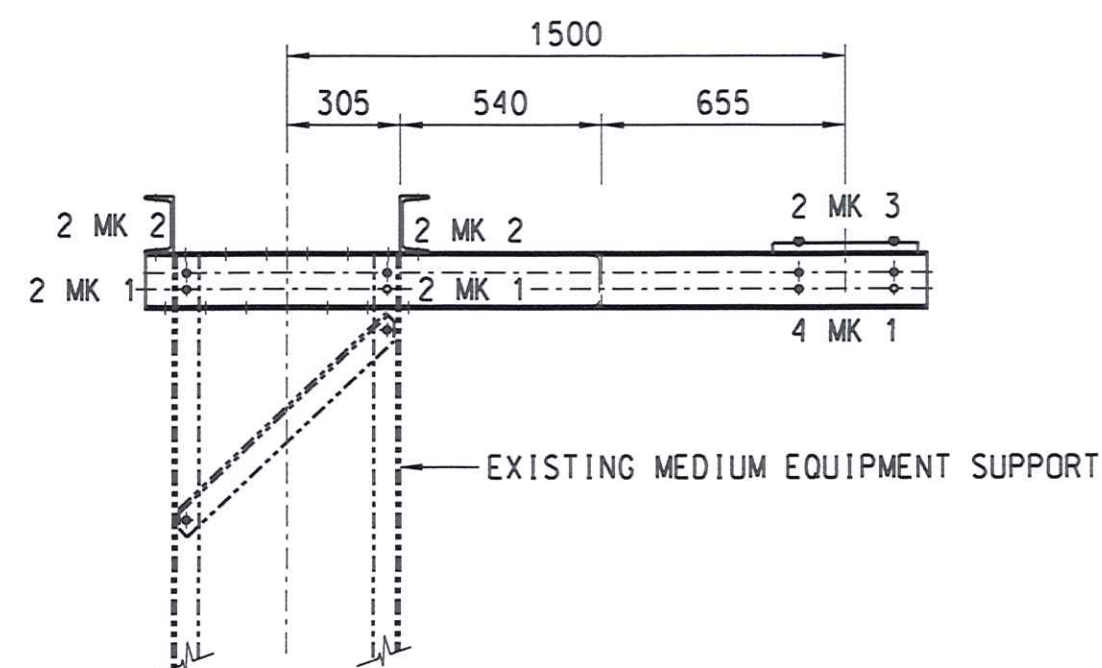


MK ④ 2 OFF REQD.

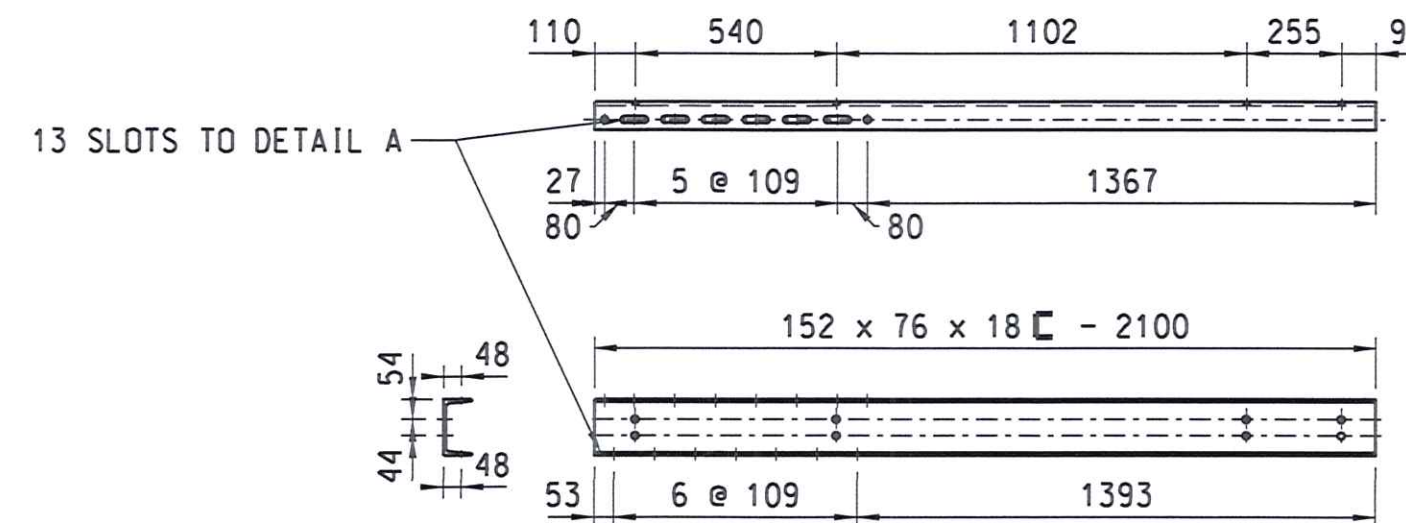
BOLT SCHEDULE (STRENGTH GRADE 8.8)				
MK	DIA	LENGTH	No OFF	WASHER/BOLT
1	M 16	40	24	1 FLAT
2	M 16	45	4	2 BEVELLED
3	M 16	65	4	1 FLAT

NOTES ON BOLTS:
 1- BOLTS TO BE SUPPLIED WITH ONE NUT AND WASHER.
 2- BOLTS ERECTED WITH HEAD TO INSIDE PREFERRED.
 3- WASHER TO BE PLACED UNDER NUT.
 4- ALL BOLTS TO BE GALVANIZED.

MASS IN kg		
STRUCTURE	BOLTS	TOTAL
165.5	2.7	168.2

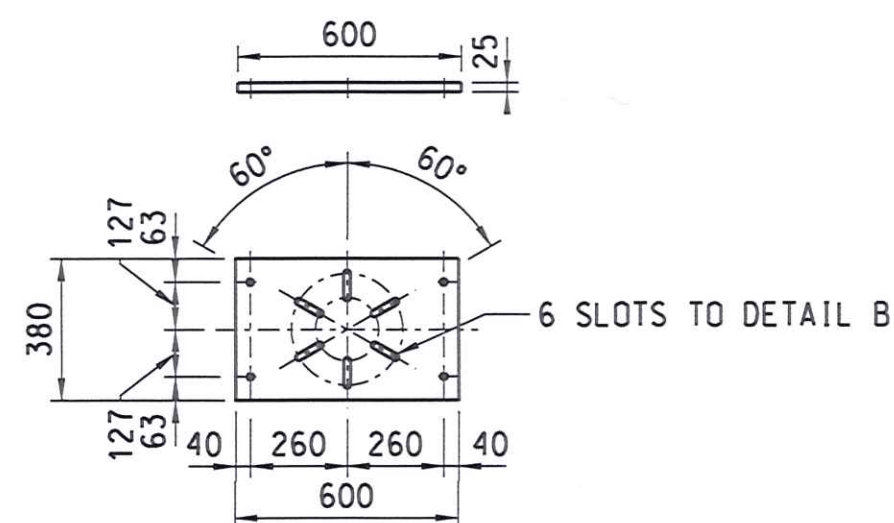


DETAILS OF CAP ASSEMBLY

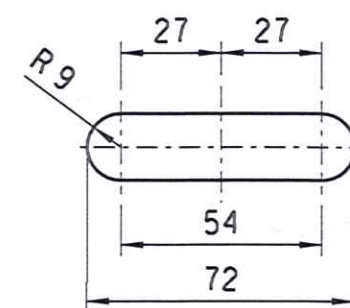


MK ① 1 OFF REQD.

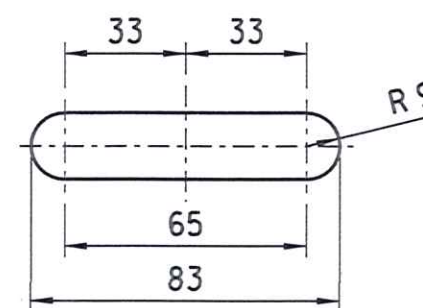
MK ①x 1 OFF REQD. OPP. HAND



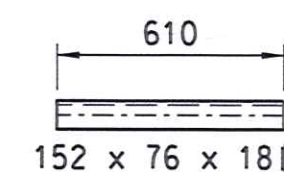
MK ⑤ 1 OFF REQD.



DETAIL A
SCALE 1 : 2




DETAIL B
SCALE 1 : 2



MK ③ 1 OFF REQD.

NOTES:

- ALL WELDING AND WELDING SYMBOLS SHALL CONFORM TO SABS 10044 PART 1 TO PART 5.
- ALL STEELWORK TO BE GRADE 350W, TO SANS 1431 AND HOT DIP GALVANIZED TO SANS 121.
- ALL WELDS TO BE SEAL WELDED.
- ALL STEELWORK TO BE FABRICATED, ERECTED & LEVELLED, TO A TOLERANCE OF + OR- 1.5 mm.
- ALL BOLTS SECURING EQUIPMENT TO THIS STRUCTURE, TO BE SUPPLIED BY EQUIPMENT CONTRACTOR.
- H.D. BOLTS COMPLETE WITH NUT AND WASHER TO BE SUPPLIED BY CIVIL CONTRACTOR.
- HOLES TO BE DIA. 18 FOR M16 GRADE 8.8 BOLTS HOT DIP GALVANIZED.
- ALL MARKS TO BE STAMPED ONTO STEELWORK AND SHALL BE CLEARLY LEGIBLE AFTER GALVANISING.
- ALL WORK SHALL COMPLY WITH SANS 1200 SERIES SPECIFICATIONS.

0	FIRST ISSUE				302-5	SUPPORT
REV	REVISION DESCRIPTION	DRAWN	CHKD	AUTH	DATE	0.54/ REFERENCE DRAWINGS
APPROVED BY	 ESKOM HOLDINGS LIMITED REG No 2002/015527/06					
DATE	132kV SUPPORT MEDIUM EQUIPMENT SUPPORT TOP CAP WITH SA BRACKET					
CHECKED BY						
DATE 21/5/2016						
DRAWN BY B HAJEE						
DATE 19/05/2016						
SCALE 1:20	0.54/8739					
	0					0