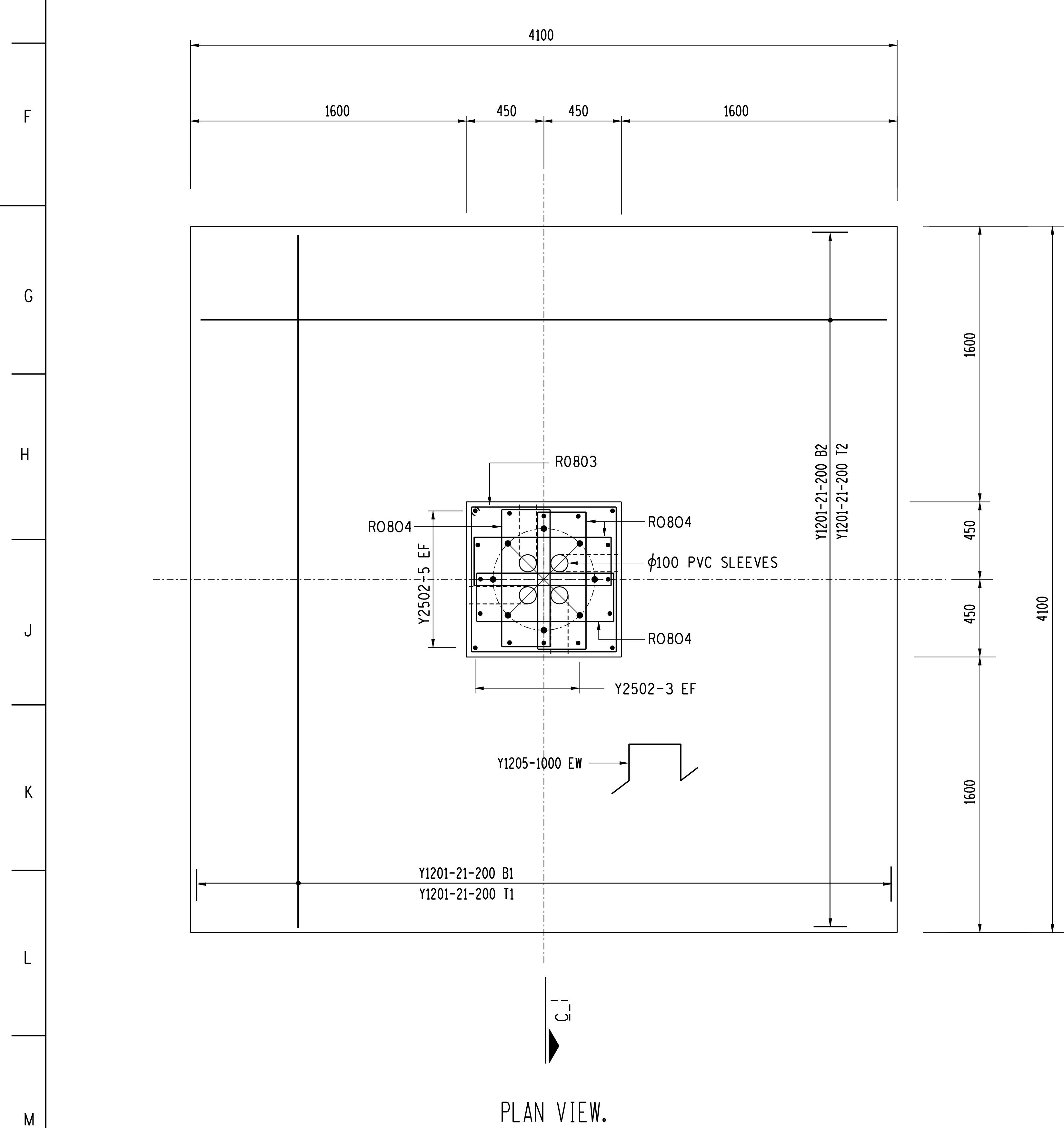
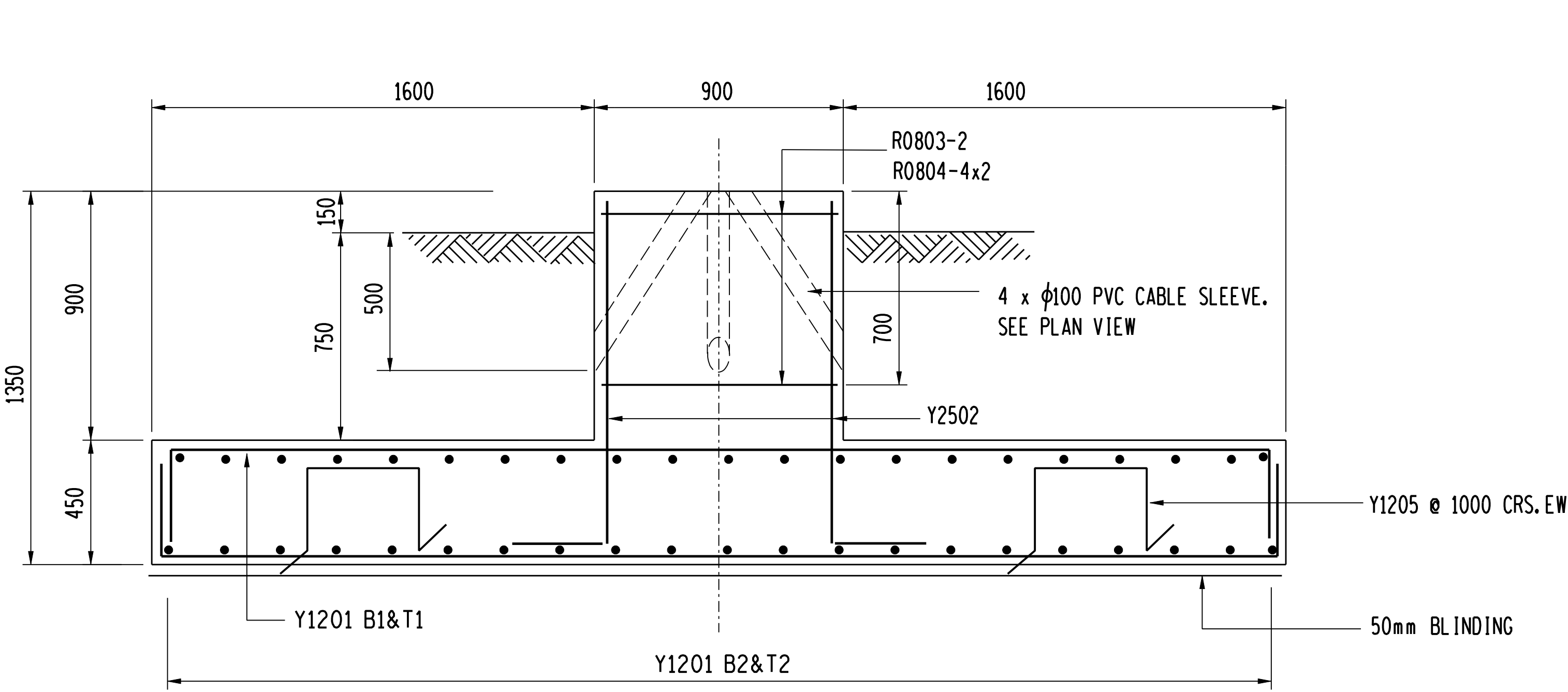


HD BOLT LAYOUT ON PLINTH. (24m)  
N.T.S.



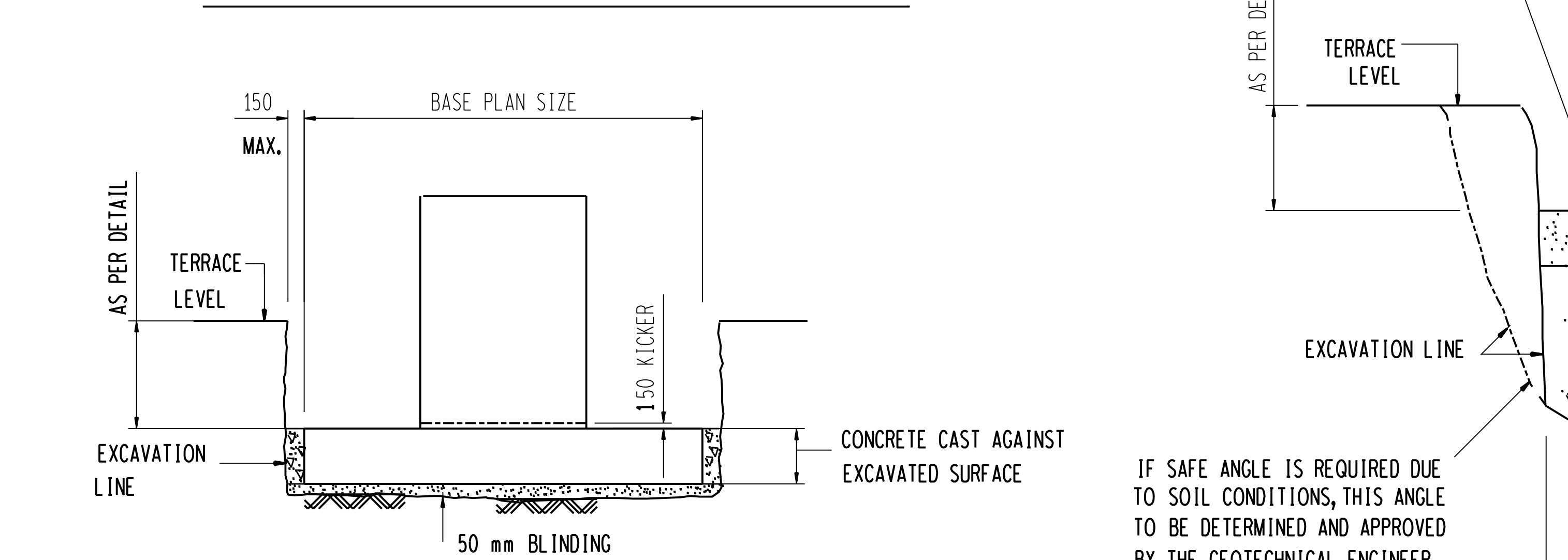
PLAN VIEW.



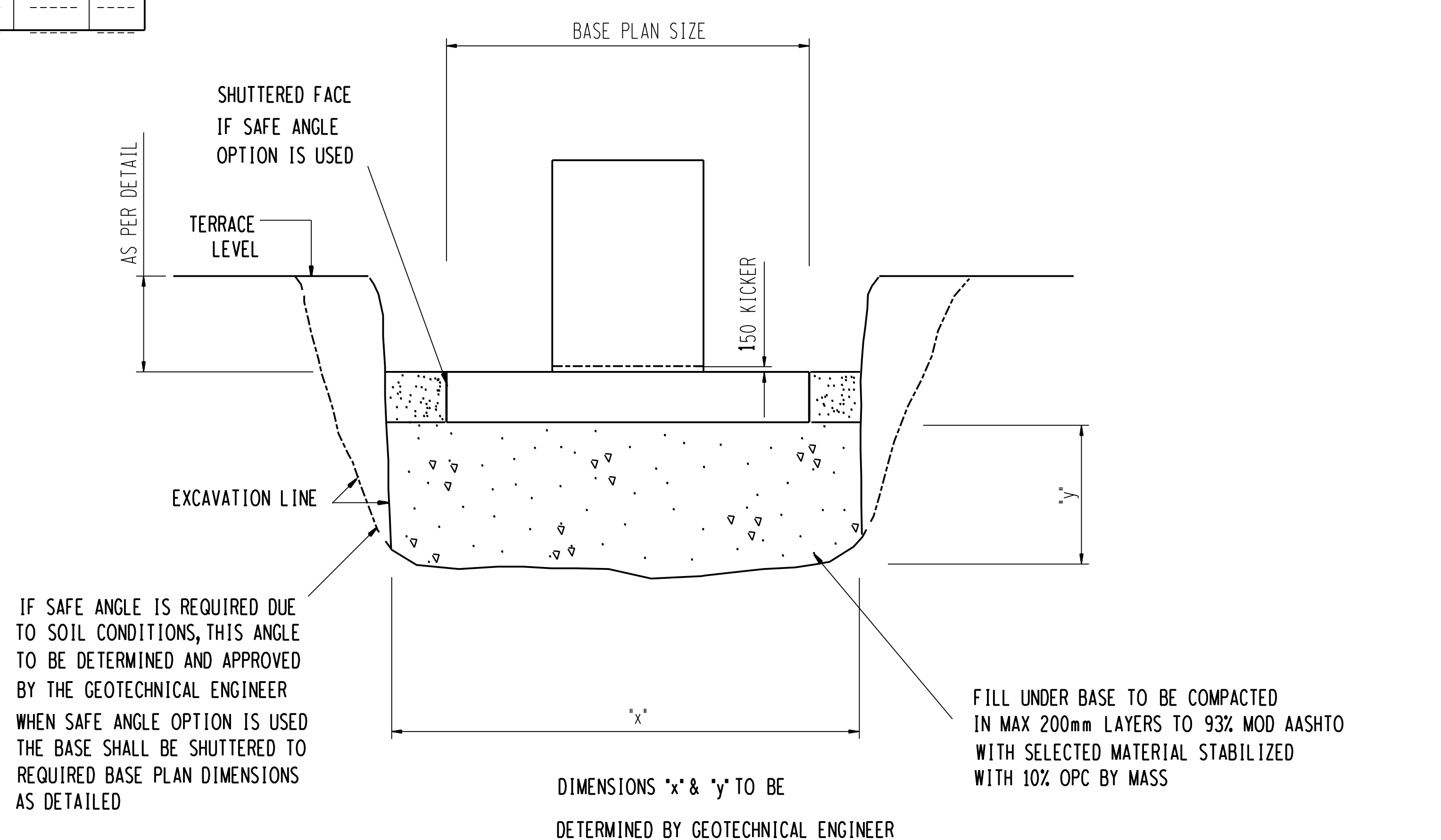
SECTION C-C.

ITEM AND No OFF	BARS							SHAPE CODE	STANDARD SHAPES BENDING DIMENSIONS mm					
	Y O R	DIA.	MK.	No OFF		CUTTING LENGTH mm	TOTAL LENGTH m		A	B	C	D	E	R
				PER ITEM	TOTAL									
24m FOUNDATION. 1 OFF.	Y	12	.01	---	84	.4700	38	.360	.4040	---	---	---	---	
	Y	25	.02	---	16	.1550	37	.1260	---	---	---	---	---	
	R	08	.03	---	2	.3550	60	.840	.840	---	---	---	---	
	R	08	.04	---	8	.2450	60	.280	.840	---	---	---	---	
	Y	12	.05	---	16	.1800	83	.400	.355	400	---	---	---	
	-	-	-	---	---	---	---	---	---	---	---	---	---	

CONCRETE & REINFORCEMENT DETAILS - 24m MAST.



DETAIL 1  
COMPETENT FOUNDING MATERIAL FOUND AT A LEVEL NOT EXCEEDING 50 mm BELOW U/S OF PLINTH BASE AS DETAILED




DETAIL 2  
COMPETENT FOUNDING MATERIAL NOT FOUND AT LEVEL AS PER DETAIL

EXCAVATION DETAILS

- NOTES:
- CONCRETE MIX : BLINDING = 15/19  
FOUNDATION = 25/19
  - MIN. CONCRETE COVER TO REINFORCEMENT = 30mm.
  - ALL HD BOLTS, NUTS, WASHERS, ETC. TO BE HOT DIPPED GALVANISED TO SABS 763.
  - HD BOLTS TO BE SUPPLIED BY THE CIVIL CONTRACTOR.
  - STEEL TEMPLATE TO BE USED FOR SETTING OUT OF HD BOLTS.
  - ANY DAMAGE TO THE GALVANISED SURFACES SHALL BE REPAIRED WITH AN APPROVED ZINK-METAL SPRAY OR INORGANIC ZINK-RICH PAINT COMPLYING WITH SABS 926. APPLICATION TO SUPPLIERS SPECIFICATIONS.
  - ALL TOP EDGES OF CONCRETE TO HAVE 20 x 20 CHAMFERS.
  - STEELWORK TO BE BOLTED DIRECTLY ONTO PLINTHS WHEREVER POSSIBLE. SHOULD TOLERANCES BE EXCEEDED THEN GALVANISED PACKING PLATES SHALL BE USED TO CORRECT THE DISCREPANCY. GROUT WHEN REQUIRED SHALL BE: MIN 35MPa FREE FLOWING, NON-METALLIC, NON-SHRINK GROUT TO SUPPLIERS SPECIFICATIONS. CONCRETE TO BE THOROUGHLY SOAKED LESS THAN 12 HOURS BEFORE GROUTING.
  - CONCRETE FINISH : TOP OF FOUNDATION - WOOD FLOAT FINISH  
SIDES - SMOOTH OFF SHUTTER FINISH
  - THESE FOUNDATIONS HAVE BEEN DESIGNED TO FOUND ON COMPETENT FOUNDING MATERIAL HAVING A MIN. GROUND BEARING CAPACITY OF 80KPa. IN ALL CASES COMPETENCY OF FOUNDING MATERIAL MUST BE ESTABLISHED BY A QUALIFIED GEOTECHNICAL ENGINEER.

8	ORG. SHEET NUMBER REMOVED	ARN	DBN	DJS	4/11/03		
7	REDRAWN AND TITLE CHANGED	ARN	DBN	DJS	1/10/99		
6	REINFORCEMENT REVISED	DBN	DBN	DJS	1/5/99		
5	H.D. BOLT LAYOUTS REVISED	ARN	DBN	DJS	2/2/98		
4	H.D. BOLT LAYOUTS REVISED & NOTE 8 ADDED.	ARN	DBN	DJS	30/8/98	4708	10m MAST
3	MEMBERS 03 & 04 REVISED ON 24m MAST.	A. D.	DJS	M.v/GE.	21/2/96	4656	14m MAST
2	TITLES CHANGED.	A. D.	A. D.	M.v/GE.	3/7/95	4657	18m MAST
1	CABLE SLEEVE DETAILS ALTERED.	HBC				4658	24m MAST
REV	REVISION DESCRIPTION	BY	CHKD	AUTH	DATE	0 54/	REFERENCE DRAWING

DESIGN APPROVED			Eskom Transmission	24m LIGHT MAST	LAYOUT AND DETAIL OF FOUNDATION
M VD ENDE					
DATE 24/11/94					
DESIGN CHECKED					
DBN		©	0.54/4659		
DATE 24/4/94					
DRAWN BY					
A.D.					
DATE 24/4/94		SHEET NUMBER		REVISION	
SCALE 1:20					
		0	8		