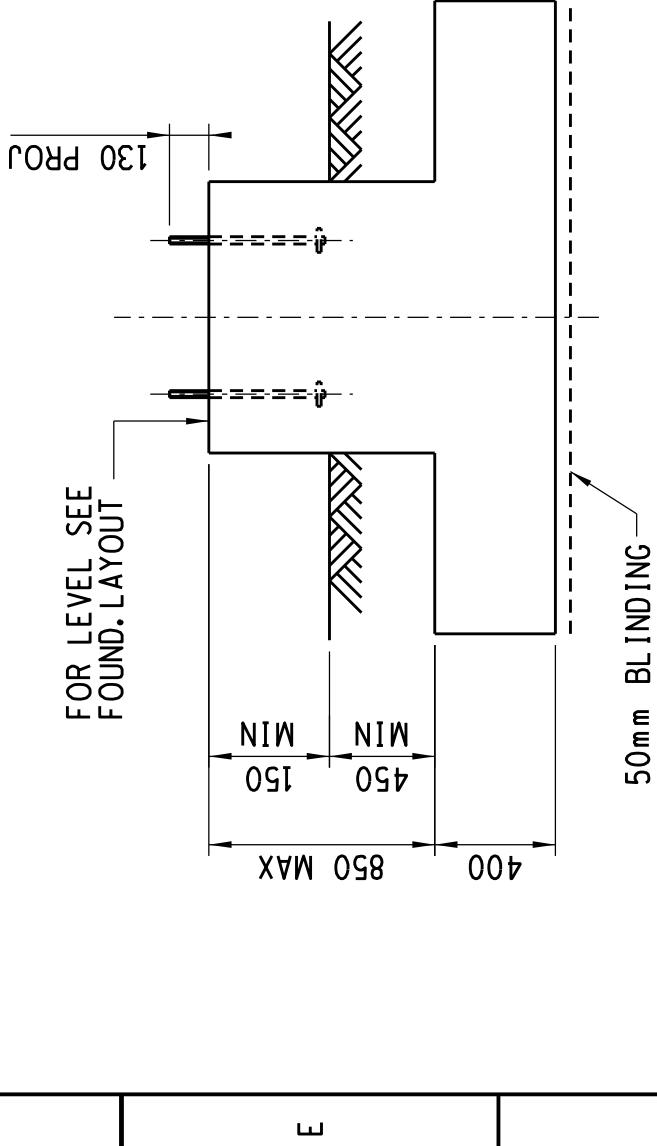
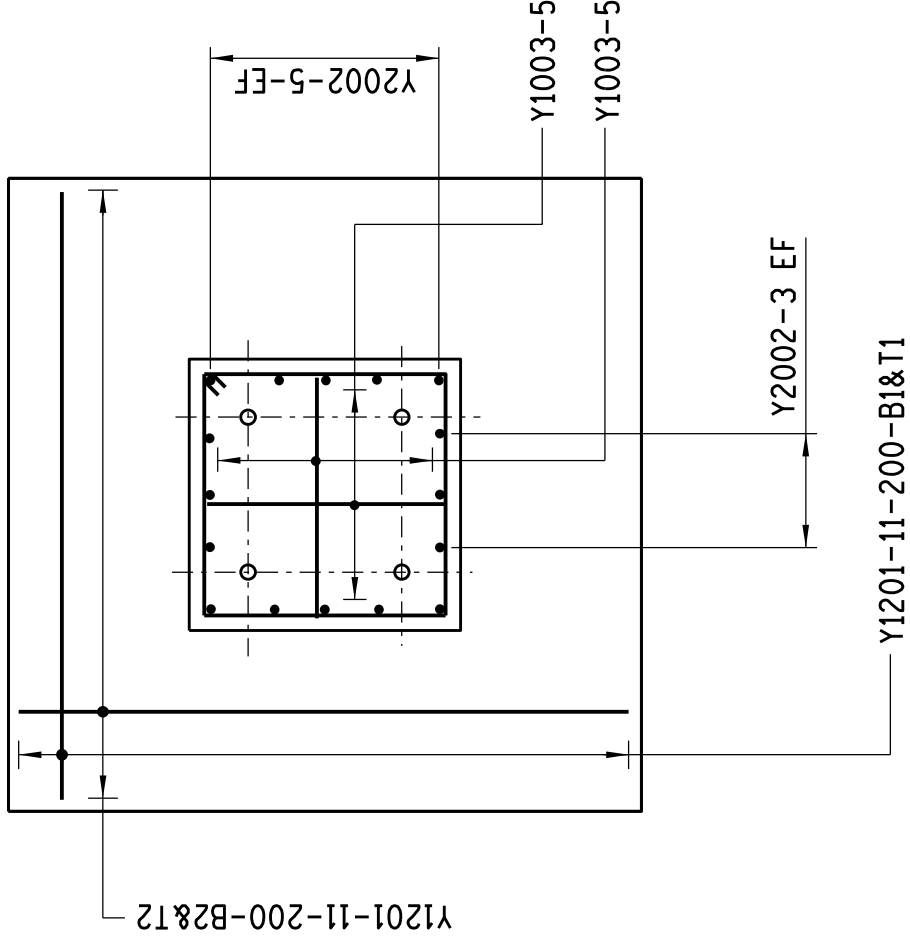


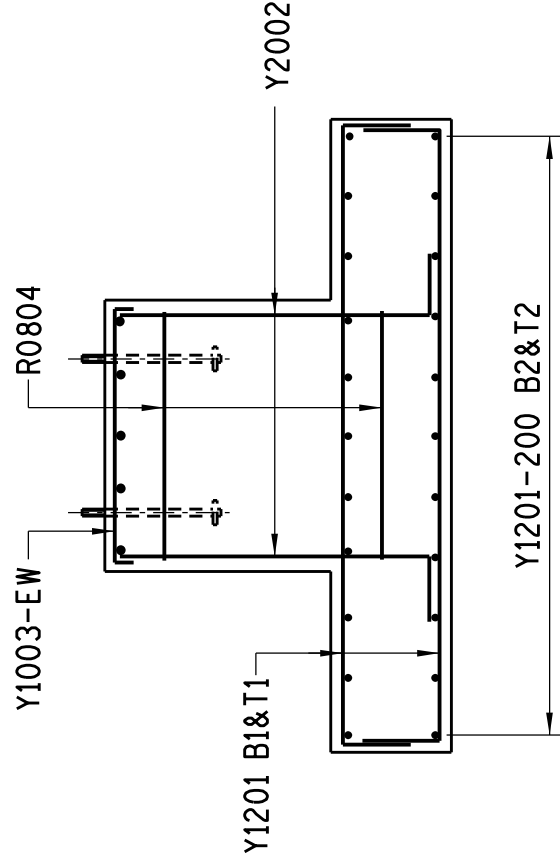
PLAN - CONCRETE



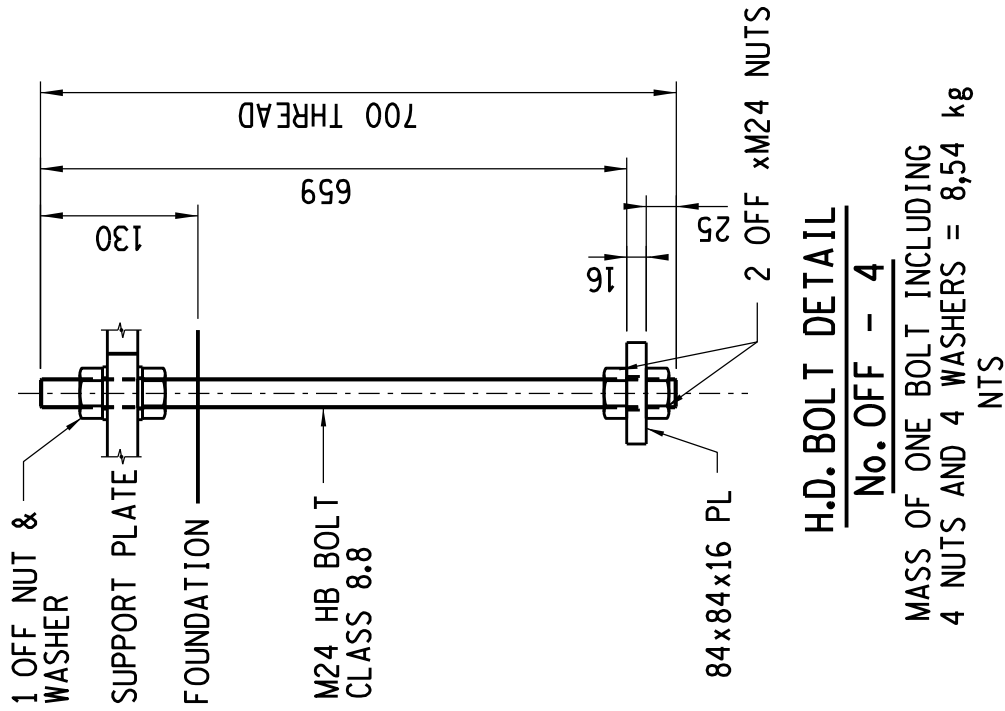
ELEVATION - CONCRETE



PLAN-REINFORCING



ELEVATION - REINFORCING



H.D. BOLT DETAIL

No. OFF - 4

MASS OF ONE BOLT INCLUDING  
4 NUTS AND 4 WASHERS = 8,54 kg  
NTS

NOTES

1. CONCRETE STRENGTH AT 28 DAYS/STONE SIZE : BLINDING = 15/19  
FOUNDATION = 25/19  
SLUMP VALUE 75mm(±25mm)
2. MIN. COVER TO REINFORCEMENT TO BE 50mm
- 3 a. HD BOLTS (GRADE 8.8) SUPPLIED BY CIVIL CONTRACTOR COMPLETE WITH NUTS & WASHERS TO BE HOT DIPPED GALVANISED TO SANS 121  
b. THREAD TO BE OVER-CUT TO SANS 121 TO ALLOW FOR THICKNESS OF GALVANISING
4. FORMWORK TO EXTEND AT LEAST 150mm BELOW GROUND LEVEL
5. STEEL TEMPLATE TO BE USED FOR SETTING OUT OF HD BOLTS
6. 30 MPa FLOWABLE NON-SHRINK GROUT UNDER BASE PLATES ONLY IF REQUIRED
7. ALL TOP EDGES TO HAVE 20 x 20 CHAMFER
8. ALL WORK TO BE IN ACCORDANCE WITH SANS 1200 SERIES OF SPECIFICATIONS; TOLERANCE/DEVIATION TO BE DEGREE OF ACCURACY II
9. CONCRETE FINISH : TOP OF FOUNDATION - WOOD FLOAT FINISH  
SIDES OF FOUNDATION - SMOOTH OFF SHUTTER FINISH
10. THESE FOUNDATIONS HAVE BEEN DESIGNED TO FOUND ON COMPETENT FOUNDING MATERIAL. IN ALL CASES COMPETENCY OF FOUNDING MATERIAL MUST BE ESTABLISHED BY A QUALIFIED GEO-TECHNICAL ENGINEER
11. IN-SITU MATERIAL TO BE COMPACTED TO 93% MOD ASSHTO DENSITY AT OMC. MATERIAL TO HAVE A MINIMUM BEARING CAPACITY OF 15kPa FOUNDING MATERIAL. IN ALL CASES COMPETENCY OF FOUNDING MATERIAL MUST BE ESTABLISHED BY A QUALIFIED GEO-TECHNICAL ENGINEER

ITEM AND No OFF	BARS				STANDARD SHAPES BENDING DIMENSIONS		
	Y OR R	Di	MK.	No OFF PER ITEM	CUTTING LENGTH mm	TOTAL LENGTH m	SHAPE CODE
FOR 1 FOUNDATION	Y 12 01			44	2450		38
	Y 20 02			16	A		37
	Y 10 03			10	1050		38
	R 08 04			C	3400		60

B = ( LENGTH OF PLINTH - 50 ) + 325

A = B + 520

C = ( B/300 ) + 1

	MIN.	MAX.
FOUNDATION VOLUME	2.25m³	2.46m³
BLINDING VOLUME	0.21m³	0.21m³
REBAR WEIGHT	163kg	175.2kg

4		8829		APPLICATION GUIDE	
UPDATED TO STANDARD AND REVISED		BH		15-02-2021	
HD BOLT FOR ENG. 2021		301-305		MED. EOP. SUPP.	
REV	REVISION DESCRIPTION	DRAWN	CHKD	DATE	REFERENCE DRAWINGS
APPROVED BY					
M. VAN DEN ENDE					
DATE	12/07/93				
CHECKED BY					
M. VAN DEN ENDE					
DATE	12/07/93				
DRAWN BY					
RJC					
DATE	29/6/93				
SCALE	1:25				
0.54/4358		0		4	
SHEET NUMBER		REVISION		SIZE	
0.54/4358		0		A2L	

MEDIUM EQUIPMENT SUPPORT  
PAD TYPE FOUNDATION DETAIL

Eskom

Eskom Holdings SOC Ltd  
Reg No 2002/015527/30