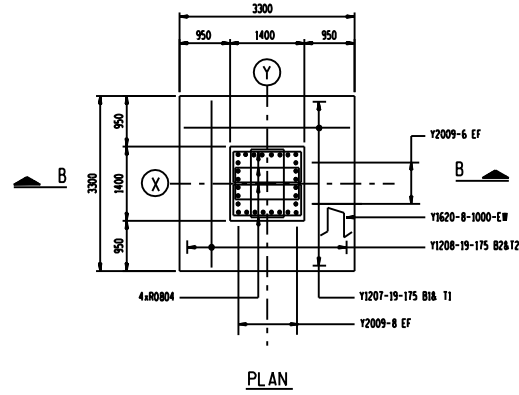
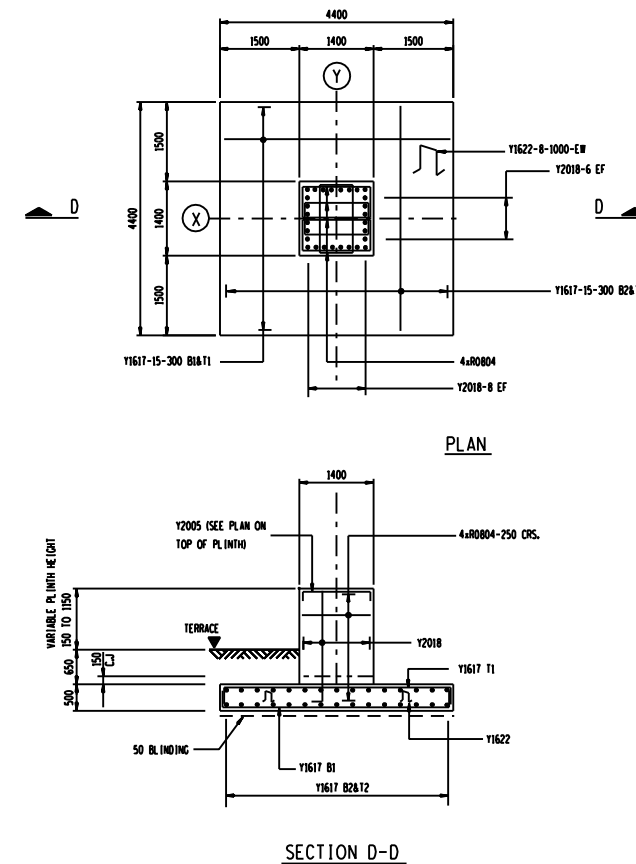
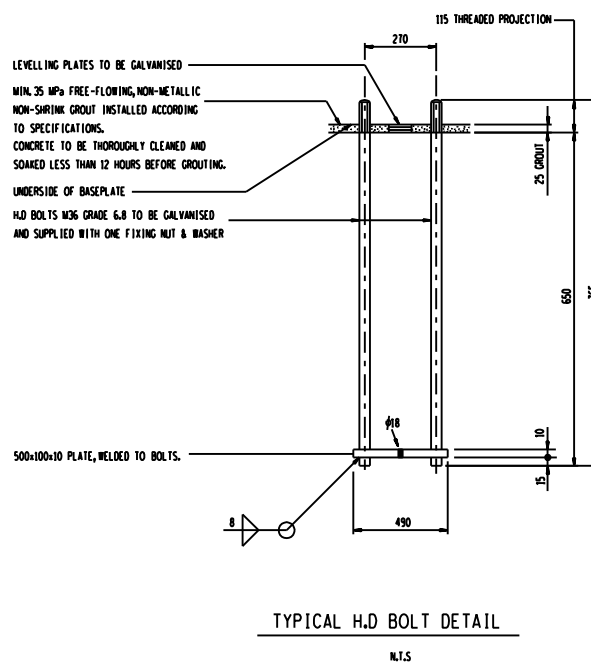
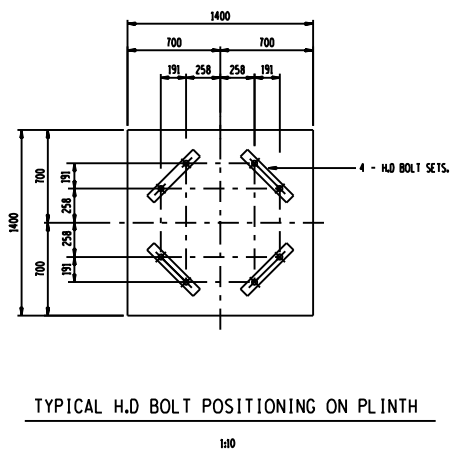
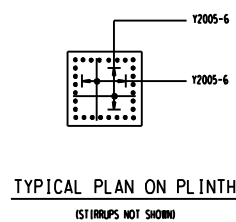
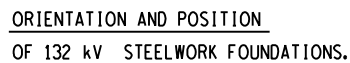


COLUMN FOUNDATION
TYPE - RC2.



<div style="display: flex; justify-content: space-between; align-items: center;"> <div style="width: 40%;"> <h2 style="margin: 0;">PART 1</h2> <h3 style="margin: 0;">GENERAL</h3> </div> <div style="width: 60%; text-align: right;"> <h2 style="margin: 0;">TO DETERMINE DIM. A,B & C.</h2> </div> </div>	
<p>A=500+650+VARIABLE PLINTH HEIGHT-130 = 1020 + VARIABLE PLINTH HEIGHT.</p> <p>B=4+170</p> <p>C= $\frac{A}{200}$</p>	<p>1) FOUNDATION SHALL BE CONCRETE GRADE M20 WITH 1% CEMENT RICH PASTE.</p> <p>2) MIN. CONCRETE COVER TO REINFORCEMENT = 50mm</p> <p>3) THESE FOUNDATIONS HAVE BEEN DESIGNED TO FOUND ON COMPETENT FOUNDING MATERIAL HAVING A MIN. GROUND BEARING CAPACITY OF 150kpa</p> <p>4) IN ALL CASES, COMPETENCY OF FOUNDING MATERIAL MUST BE ESTABLISHED BY A QUALIFIED GEOTECHNICAL ENGINEER</p> <p>5) STEEL TEMPLATE TO BE USED FOR SETTING OUT I.D. BOLTS</p> <p>6) a) I.D. BOLTS SUPPLIED BY CIVIL CONTRACTOR COMPLETE WITH NUTS & WASHERS AND TO BE GALVANISED TO S.A.B.S 163</p> <p style="margin-left: 20px;">b) (NOT DIPPED) AND MUST BE CLEARLY MARKED WITH DIAMETER, GRADE AND BASE TYPE</p> <p style="margin-left: 20px;">c) THREAD OF NUTS TO BE OVER-CUT TO SABS ISO 1461 TO ALLOW FOR THE THICKNESS OF GALVANISING</p> <p style="margin-left: 20px;">d) ANY DAMAGE TO THE GALVANISED SURFACES SHALL BE REPAIRED WITH AN APPROVED ZINC-METAL SPRAY OR INORGANIC ZINC-RICH PAINT COMPLYING WITH S.A.B.S. 926 APPLICATION TO SUPPLIERS SPECIFICATIONS</p> <p>7) ALL TOP EDGES OF CONCRETE ABOVE GROUND TO HAVE 20 x 20 CHAMFERS</p> <p>8) ALL WORK TO BE IN ACCORDANCE WITH S.A.B.S. 1200 SERIES SPECIFICATIONS</p> <p>9) CONCRETE FINISH : TOP OF FOUNDATION – WOOD FLOAT FINISH</p> <p style="margin-left: 40px;">: SIDES – SMOOTH OFF SHUTTER FINISH</p>

[illegible]