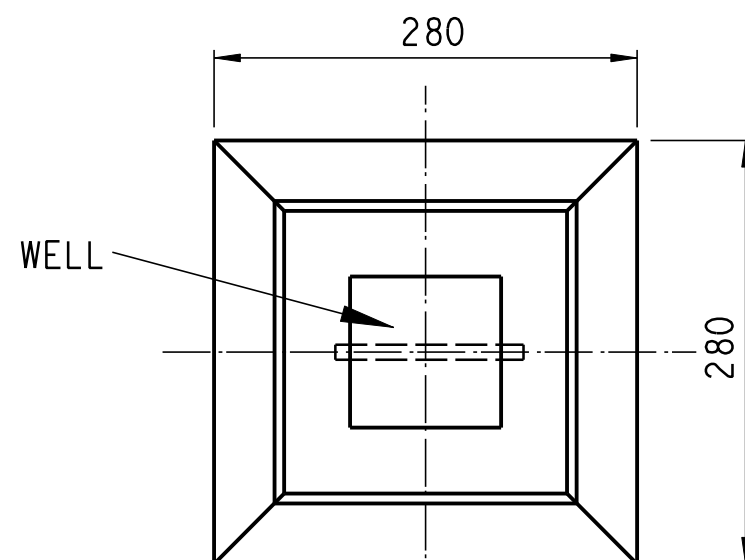



SECTION A-A
SCALE 1:1

NOTES:

1. WELL NOT TO BE LEAD FILLED UNTIL MARKER IS REQUIRED FOR CABLE SERVITUDE.
2. MARKER TO BE PRECAST CONCRETE.
3. TOP OF CABLE MARKER TO BE 76 ABOVE GROUND LEVEL WHEN POSITIONED EXCEPT ON PAVING OR TARMAC, WHEN THEY ARE TO BE FLUSH WITH THE SURFACE.
4. CABLE NUMBERS TO BE PUNCHED ON LEAD AND ROUTE DIRECTION TO BE INDICATED.



SCALE 1:5

1			REDRAWN ON CAD		ARN			
0			FIRST ISSUE / EERSTE UITREIKING					
REV	AUTH MAG	DATE DATUM	REVISION/REVISIES		BY	CHKD NAGES	REFERENCE DRAWINGS VERWYSINGSTEKENINGE	
			INDEX REF/INDEKSVERW		DEUR			
DRG.TEK REGISTR			<div>TRANSMISSION SUBSTATION TECHNOLOGY DEPARTMENT</div> <div></div> <div>ESKOM</div>		CABLE ROUTE MARKER DETAILS			
CHKD NAGES								
DRAWN GETEKEN			APPROVED		GOEDGEKEUR		REV	
SCALE SKAAL	AS SHOWN						0.00/1286	
							0	