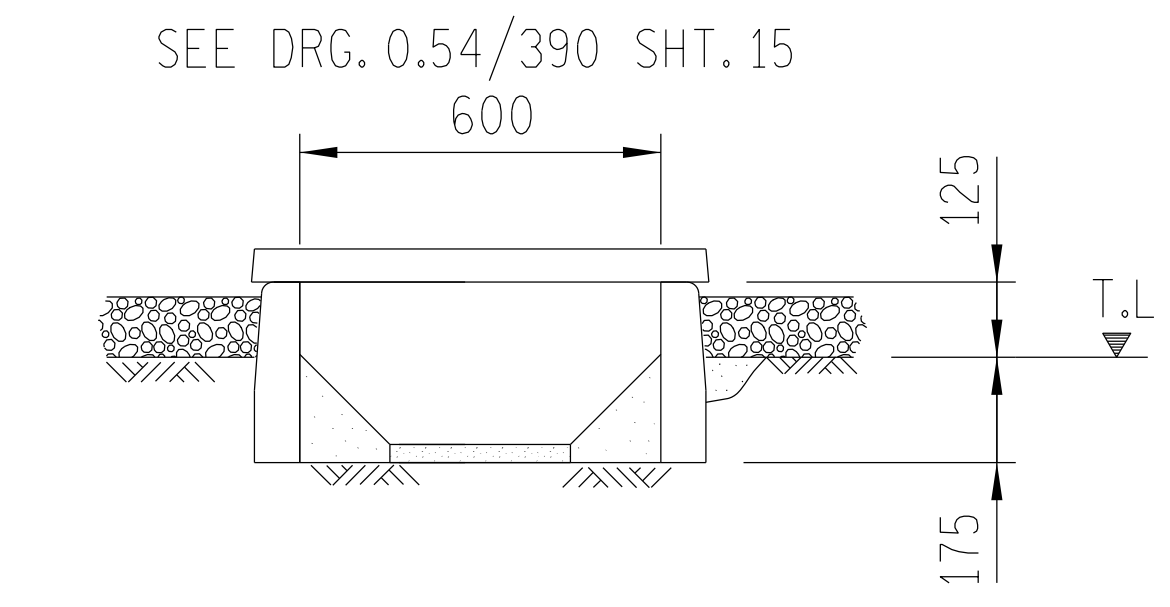


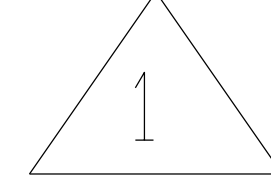
DOOR - D1

ROOF WATERPROOFING



TYP. SECTION OF STANDARD CABLE TRENCH

1:25



0,813 X 2,032 STEEL DOOR AND FRAME COMBINATION  
TRANSFORMER ROOM UNIT - LOUVRED

FIT UNION MORTICE UPRIGHT LOCK. OVAL CYLINDER L-2241-78 SS/2x13 KNOB INSIDE  
FIT UNION PROTEA CB612 - 13 CHROME HANDLE

FIT 150mm CHROME PLATED CABIN HOOK & EYE ON INSIDE.  
HOOK ON MERANTI BLOCK, PLUGGED AND SCREWED TO WALL.

FINAL CLEANING AND PAINTING OF DOOR SHALL BE DONE AFTER FINAL INSTALLATION OF DOOR AND FITTINGS.  
SURFACE PREPARATION IS IMPORTANT BEFORE APPLYING PAINT.  
SURFACES TO BE CLEAN, DRY AND FREE FROM DUST AND OIL.  
WORK WELL OVER SURFACES PLASCON CLEANER FOR GALVANISED IRON TO MANUFACTURERS SPECIFICATIONS.  
APPLY ONE COAT PLASCON PRIMER FOR GALVANISED IRON TO MANUFACTURERS SPECIFICATION.

PRIMER FOR GALV. STEEL & PLASCON VELVAGLO - DOVE GREY VLO 67

PREPARE ROOF TO MANUFACTURERS SPECIFICATIONS AND APPLY  
SIKA SEALOFLEX - PROFFESIONAL FLEXIBLE FIBRE REINFORCED WATERPROOFER  
ONLY AFTER 28 DAYS AND WHEN ROOF IS COMPLETELY DRY AS SPECIFIED BY MANUFACTURER.

OR

APPLY ABE ABEDEx DUAL REINFORCED TORCH ON WATERPROOFING MEMBRANE.  
APPLY ONE COAT ABE SILVAKOTE ALUMINIUM PROTECTIVE COATING ON TO  
WATERPROOFING MEMBRANE AT COMPLETION.

ROOF SLAB TO BE SHAPED SUCH THAT  
RUN-OFF DOES NOT FALL ON CABLE TRENCHES

FINISHING SCHEDULE.

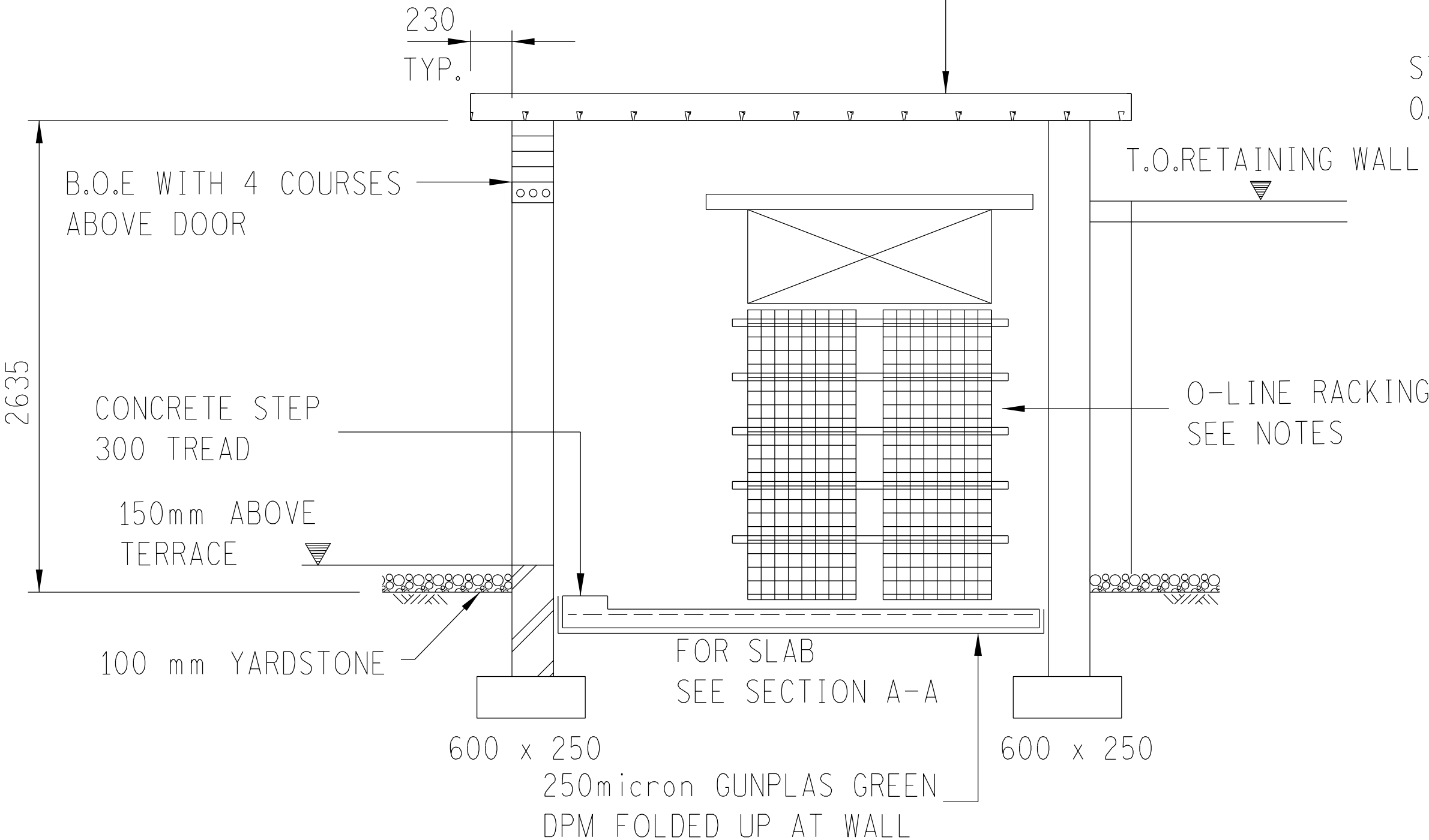
EXTERNAL WALLS - FACEBRICK AS CONTROL BUILDING  
INTERNAL WALLS - CAY STOCK BRICKS FLUSH JOINTED  
1 COAT CEMENT SLURREY APPLIED BY BLOCKBRUSH (BAGGED)

FLOORS - DRY SHAKE GREY FLOOR HARDENER  
SMOOTH STEELFLOATED  
25mm SCREED ON 100mm REINFORCED CONCRETE SLAB.  
SCREED TO FALL TO FRONT CABLE ENTRANCE OPENING  
NO SKIRTING

DOOR AND ROOF BOND-LOK - SPECIFIED DOOR TO BE PAINTED  
WITH 1 COAT GALVANISED IRON PRIMER  
2 COATS PLASCON VELVAGLO - DOVE GREY VLO 67.

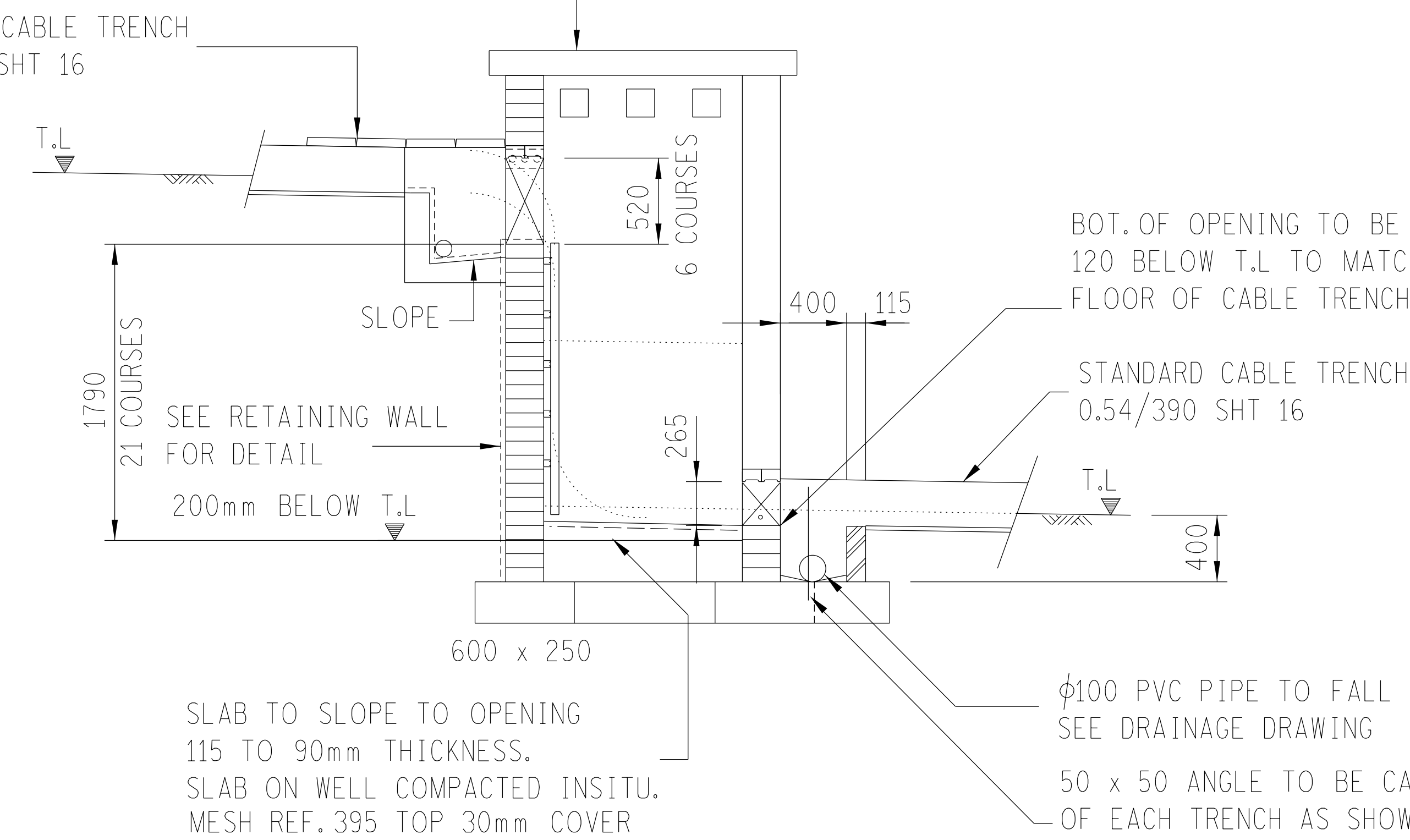
150mm CONCRETE SLAB WITH MESH  
REINF. REF. 500 (9mm WIRE AT 200mm CRS.)  
30mm COVER TOP. SEE NOTES FOR WATERPROOFING

BROWNUILT BOND-LOK 300mm WIDE COMPOSITE DECKING  
1,2mm THICKNESS UNPROPPED.  
DECKING TO INCLUDE 150mm HIGH BOND-LOK KERB FLASH  
ON SIDES.  
ROOF SLAB TO BE SHAPED SUCH THAT  
RUN-OFF DOES NOT FALL ON CABLE TRENCHES



SECTION B-B

1:50



SECTION A-A

1:50

NOTES

- ALL WORK TO COMPLY WITH THE NAT. BUILDING REGULATIONS AND GOVERNMENT STATUTORY REGULATIONS.
- BRICKWORK IS CLAY CLASS "FBX" AS SPECIFIED IN CLASS II MORTAR, REINFORCED FOR THE TOP FIVE AND BOTTOM FIVE COURSES AND EVERY FOURTH COURSE IN BETWEEN. FACEBRICK AS CONTROL BUILDING.
- CONC. GRADE - ROOF SLAB 25/19. FLOOR SLAB & FOUNDATIONS 15/19.
- DEPTH OF FOUNDATION TO BE DETERMINE ON SITE AND TO FOUND ON COMPETEND APPROVED FOUNDING MATERIAL.
- SCREED SHALL BE 1:3 CEMENT SAND MORTAR. (3 PARTS SAND & 1 PART CEMENT BY VOLUME.)

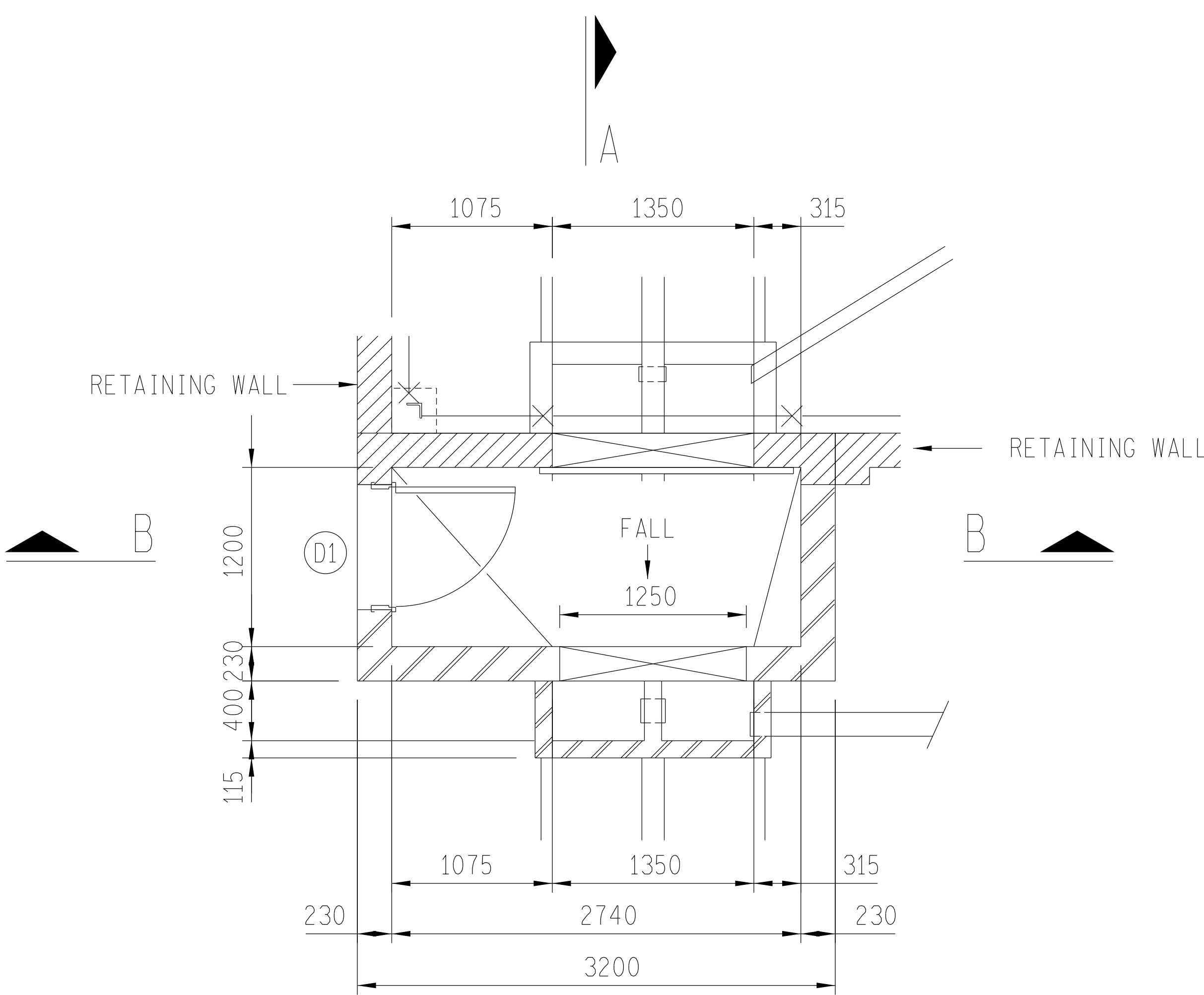
O-LINE RACKING

INSTALL 5-OFF OL1000 CHANNELS HORIZONTAL TO WALL  
AT 300 CRS. WITH 4 ANCHOR BOLTS EACH.

OL1000 CHANNELS TO BE 1,5m LONG


FIX TWO VERTICAL ROWS AS SHOWN - GS75 GRIDSPAN  
HOT DIPPED GALV. WIRE MESH TO CHANNELS  
WITH HOLD DOWN BRACKETS

BASKETS TO BE 1,6m LONG EACH.



PLAN

1:50

1	DOOR DETAIL ADDED	DBN		DBN	12/2/10		FND, TRENCH LAYOUT
REV	REVISION DESCRIPTION	BY	CHKD	AUTH	DATE	REFERENCE DRAWINGS	
APPROVED BY					ESKOM HOLDINGS LIMITED REG NO. 2002/015527/06		
DATE							
CHECKED BY		GUMENI 132KV YARD CABLE SHAFT AT EMBANKMENT PLAN, SECTIONS AND DETAILS					
DATE							
DRAWN BY							
DB NAUDE							
DATE 5/5/09							
SCALE AS SHOWN		0.08/19537			SHEET NUMBER		REVISION
							1