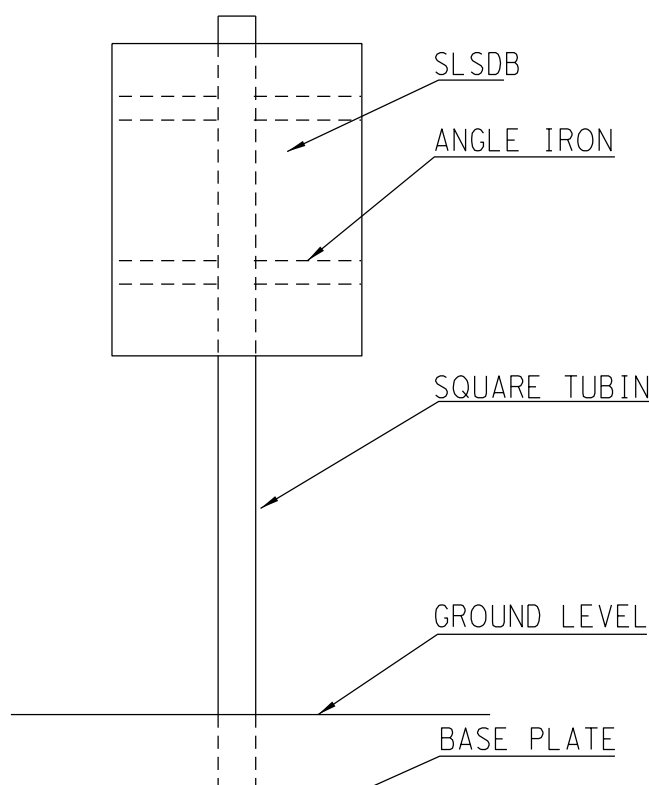


- NOTES:
1. SECURITY LIGHTING ELECTRICAL INSTALLATION WORK SHALL BE IN ACCORDANCE WITH:  
1.1. TECHNICAL SPECIFICATION  
1.2. SANS 10142  
1.3. SANS 10198
  2. POWER CABLES SHALL FOLLOW CABLE ROUTE AS SHOWN. WHEN LEAVING THE CABLE TRENCHES, THE CABLE SHALL PASS BELOW THE TRENCH WALL FOUNDATION
  3. POWER CABLES FOLLOWING ROUTES OUTSIDE THE CABLE TRENCHES SHALL BE BURIED AT A MINIMUM OF 500mm BELOW THE FINISHED TERRACE LEVEL
  4. ROUTE MARKERS SHALL BE USED TO INDICATE ROUTE DEVIATIONS FOR BURIED CABLES IN ACCORDANCE WITH DRG 0.00/1286.
  5. POWER CABLES SHALL BE LABELLED IN ACCORDANCE WITH DRG 0.00/1290. CABLE NUMBERS ARE INDICATED ON DRAWING & IN CABLE SCHEDULE
  6. POWER CABLES SHALL FOLLOW CABLE TRENCHES INSIDE CONTROL BUILDING
  7. 400V/230V AC SLDB1 LOCATION & SIZE NOT TO SCALE
  8. 400/230V AC DB1 SHALL BE EARTHED USING A 10mm DIAMETER BARE COPPER EARTH WIRE. THIS EARTH WIRE SHALL BE CONNECTED TO THE EXISTING EARTH CONDUCTOR WITHIN THE SECURITY BUILDING
  8. 400/230V AC SLDB1 SHALL BE EARTHED USING A 10mm DIAMETER BARE COPPER EARTH WIRE. THIS EARTH WIRE SHALL BE FROM BOTTOM OF POLE
  9. SECURITY POLES SHALL BE INSTALLED AT 15 METER INTERVALS AND 600 DEEP IN GROUND, ENTRY FOR SUPPLY CABLE
  10. THE SECURITY LIGHTING POLE SHALL BE MOUNTED NOT MORE THAN ONE METER FROM THE INNER FENCE
  11. SLDB1 SHALL BE WEATHER PROOF BOXES, METALLIC HOT DIPPED GALVANISED BOXES.  
THE BOX SHALL HAVE A HINGED DOOR WITH PADLOCKABLE LEVER LOCK. THE BOX SHALL BE MOUNTED ON A INDEPENDANT POLE 1m OF GROUND LEVEL

EQUIPMENT SCHEDULE			
ITEM	DESCRIPTION	SUPPLIER	QUANTITY
LUMINAIRE POLE LP01-LP30	FIBREGLASS POLE 6.6m, 4m MH ABOVE GROUND LEVEL, PROVIDED WITH ACCESS OPENING CABLE ENTRY AND GROUND PLATE WITH 5A MCB. A BASE PLATE SHALL BE PROVIDED FOR DIRECT FIXING INTO GROUND. SINGLE SIDE ENTRY SPIGOT AND COLOUR OF POLE TO BE BURKH GREY	GENLUX 28144	30
LUMINAIRE	150W HPS SECURITY HIGH PERFORMANCE LUMINAIRE SPIGOT AT SIDE ENTRY	GENLUX SKYLIGHT 150W HPS	30

CABLE SCHEDULE FOR SECURITY LIGHTING LV RETICULATION					
CABLE No	CABLE TYPE	FROM	TO	ESTIMATED LENGTH (m)	ACTUAL LENGTH (m)
DB1.SLSDB1	BVX4FCV	DB1	SLSDB1	200	
SLSDB1.LP01-LP08	BVX4DCV	SLSDB1	LP01-LP08	240	
SLSDB1.LP09-LP15	BVX4DCV	SLSDB1	LP09-LP15	200	
DB1.SLSDB1	BVX4FCV	DB1	SLSDB1	250	
SLSDB1.LP24-LP30	BVX4DCV	SLSDB1	LP24-LP30	200	
SLSDB1.LP23-LP16	BVX4DCV	SLSDB1	LP23-LP16	240	



DETAIL OF SLDB1 & 2

- LEGEND:
- - - - - DIRECTION AND LABEL OF SECURITY POLE
  - - - - - CABLE TAG DETAIL
  - - - - - CABLE ROUTE MARKER
  - - - - - MAST NUMBER
  - XXXX-XXXX- - - - CABLE ROUTE NUMBER
  - [Junction Box] - IP68 'PRATLEY' TYPE CABLE JUNCTION BOX IN TRENCH

REV	400KV YARD ADDED	ASN	NPT	25.2010	
1	REVISION DESCRIPTION	BY	CHKD	DATE	REFERENCE DRAWINGS
APPROVED BY: P. THATHLETJI		ESKOM HOLDINGS LIMITED			
DATE: 22.7.09		REG NO. 2002/015527/06			
CHECKED BY: P. THATHLETJI		GUMENI SECURITY LIGHTING POLE LOCATION AND CABLE ROUTE LAYOUT			
DATE: 22.7.09					
DRAWN BY: ARANIDE					
DATE: FEB 2009		SHEET NUMBER: 0.08/19501			
SCALE: 1:1000		REVISION: 1			