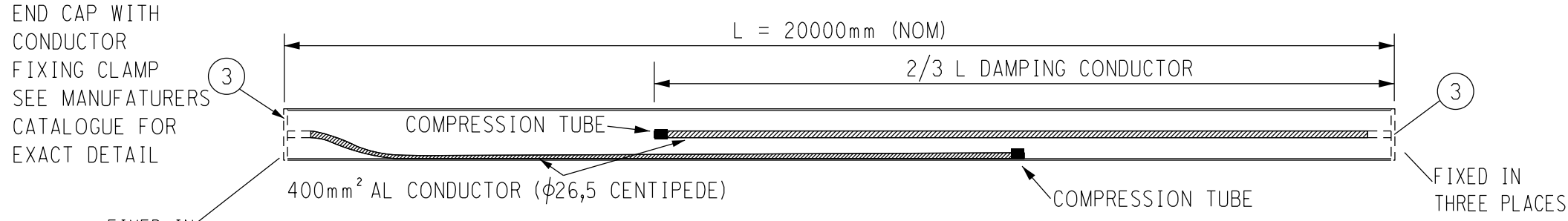


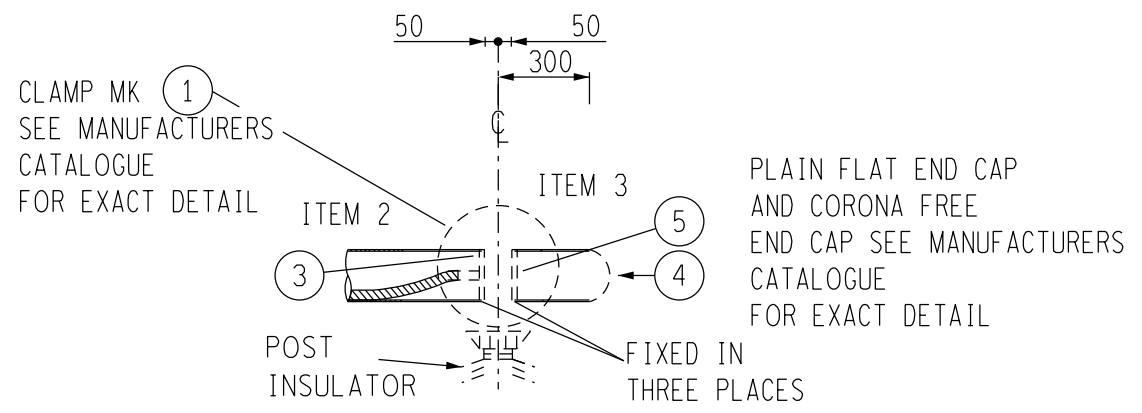
SCHEDULE OF 4250 x 6WT BUSBAR TUBES (STAGE 2)			
ITEM No	LENGTH (mm)	QUANTITY	REMARKS
1	20300	9	
2	20000	51	
3	2250	1	TO BE CUT INTO 9 EQUAL LENGTHS OF 250mm EACH

DAMPING CONDUCTOR SCHEDULE (STAGE 2) (SEE DETAIL 'A')	
DESCRIPTION	QUANTITY
CENTIPEDE (400mm ²)	1615.8 m

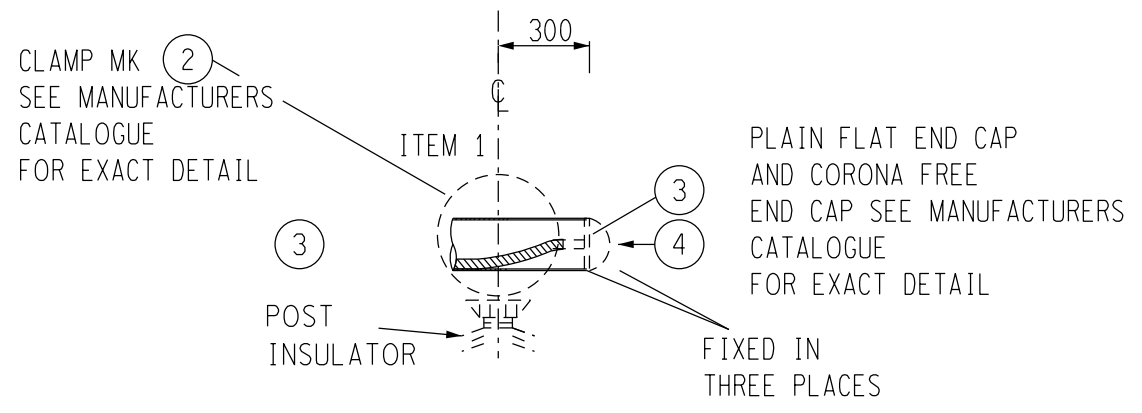
SCHEDULE OF BUSBAR CLAMPS,EQUIPMENT & STEELWORK (STAGE 2)			
MK	DESCRIPTION	ITEM	QTY
1	4250-4250 FULL IN-LINE EXPANSION CLAMP FIXED/SLIDER. 225mm PCD	TBFX-250/225/FS	60
2	SLIDING COUPLER SUPPORT CLAMP 225mm PCD	TBSC-250/225	9
3	TUBULAR BUSBAR FLAT END CAP WITH CONDUCTOR FIXING CLAMP - 250 O.D. x 238 I.D.	TBEC/C-250	120
4	CORONA FREE END CAP.	TBEC/CR-250	18 "
5	TUBULAR BUSBAR FLAT END CAP PLAIN	TBEC/P-250	18
6	DAMPING CONDUCTOR FERRULE		120
7	TYPICAL 400kV POST INSULATOR (12,5kN)	C12,5	69
8	TYPICAL 400kV TUBULAR BUSBAR SUPPORTS-(0,54/6434)	ITEM No (IN STLWK PROFORMA) 407	69
9	TYPICAL 400kV TUBULAR BUSBAR SUPPORT CAPS-(0,54/4722)	ITEM No (IN STLWK PROFORMA) 354	69



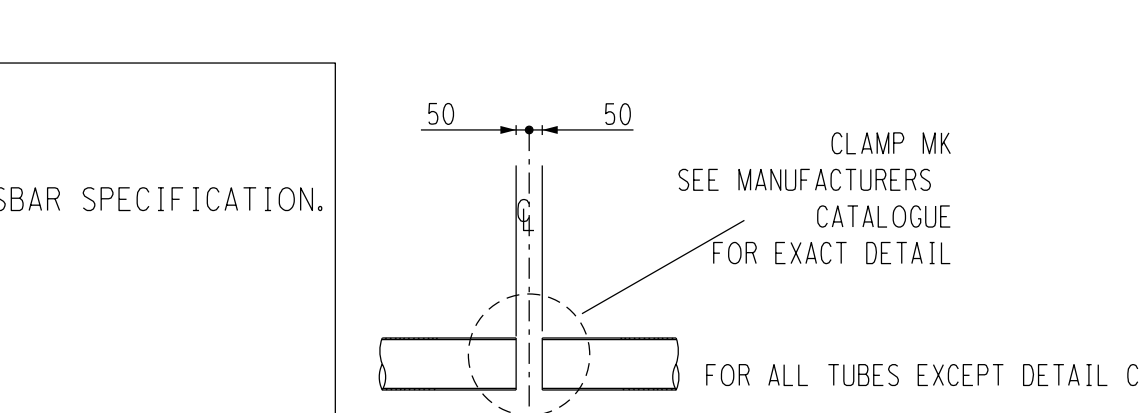
DETAIL 'A'
(N.T.S.)
DAMPING CONDUCTOR REQUIREMENT



DETAIL 'B'
(N.T.S.)



DETAIL 'C'
(N.T.S.)



DETAIL 'D'
(N.T.S.)

- NOTES
- ALL TUBES 250 DIA x 6 WT ALUMINIUM AS PER TUBULAR BUSBAR SPECIFICATION.
 - TUBE LENGTHS GIVEN ARE NOMINAL BEFORE TRIMMING TO FINAL MEASURED REQUIREMENTS AND THE ITEM NUMBERS CORRESPOND TO THOSE ITEMS OF TUBE LISTED IN SCHEDULES A,B & C OF SPECIFICATION FOR SUPPLY & INSTALLATION OF TUBULAR AL CONDUCTORS FOR GUMENI SUBSTATION.
 - ALL DIMENSIONS IN MILLIMETERS UNLESS OTHERWISE INDICATED.

REV	REVISION DESCRIPTION	BY	CHKD	AUTH	DATE
1	APPROVED BY A. MAD				
2	CHECKED BY E. NAECKER				
3	DRAWN BY A. L. CRANE				
4	DATE: 29/11/2009				
5	SCALE 1:200				

ESKOM HOLDINGS LIMITED
REG. NO. 2002/015527/06

GUMENI
400kV BUSBAR LAYOUT

SHEET NUMBER	REVISION
1	0

0.08/19533

19534	BAY LAYOUT SIGNED
19535	FENCE LAYOUT
19536	STLWK MARKING PLAN
19537	EARTHMAT LAYOUT
19538	FDN & TRENCH LAYOUT
19539	120kV TUB B/BAR LAYOUT
19540	400kV TUB B/BAR LAYOUT
19541	O/H EARTHWIRE LAYOUT
19542	KEY PLAN
19543	STATION ELEVATION
19544	REFERENCE CHARTING