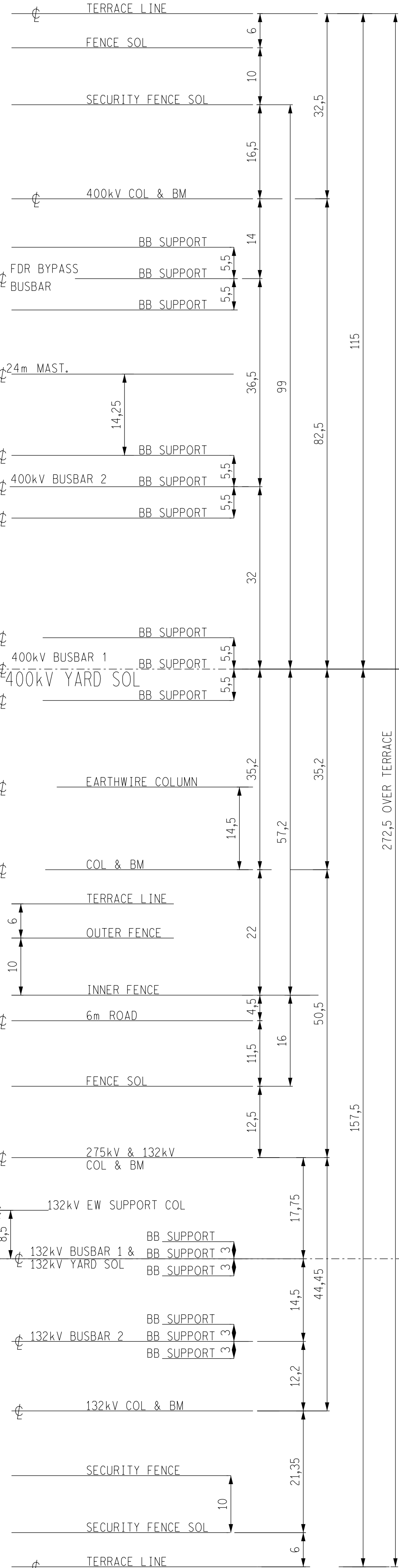
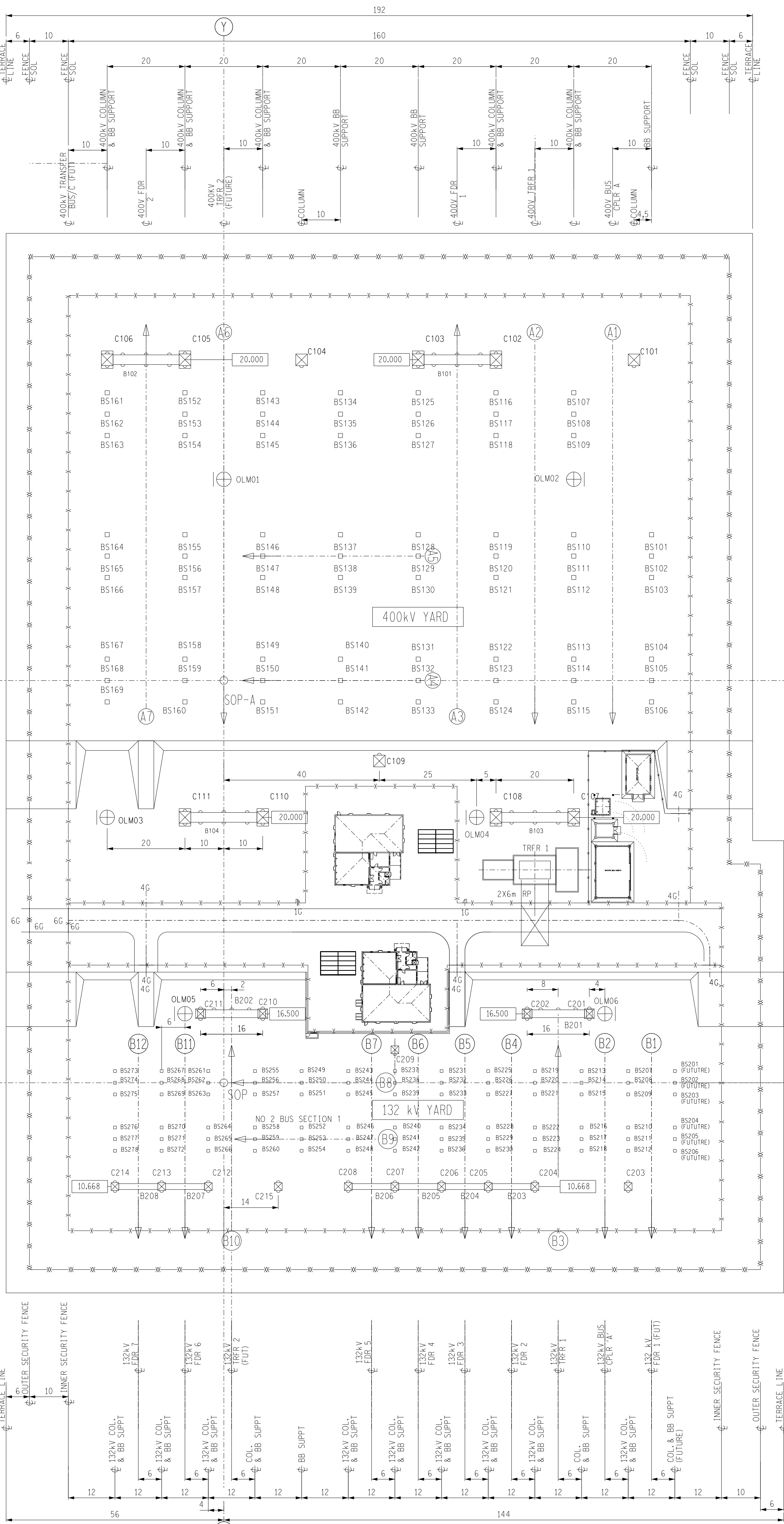


SCHEDULE C - MAIN STEELWORK 400kV YARD (STAGE 2 - INTERGRATE - 400kV YARD)				
ITEM	MARK	TYPE	DRG No 0.54/	No OFF
COLUMN	C102, C103, C105, C106, C107, C108, C110 & C111	NC2	3531	8
BEAM	B101, B102, B103 & B104	NB7	5520	4
TUBULAR BUSBAR SUPPORT	BS101-BS169		4721	69
TUBULAR BUSBAR SUPPORT CAP	BS101-BS169		4722	69
OPERATIONAL FLOODLIGHT MAST	OLM01 OLM02, OLM03 & OLM04	24m	4658	4
EARTHWIRE SUPP (SEPERATE)	C101, C014 & C109	NC9	3538	3
			3541	3
U-BOLT				19

SCHEDULE D - EQUIPMENT STEELWORK 400kV YARD (STAGE 2 - INTERGRATE - 400kV YARD)				
TYPE	DRG No 0.54/	No OFF	REMARKS	
LARGE EQUIP SUPPORT (2,5m)	309	12	CT	
MEDIUM EQUIP SUPPORT (3,5m)	304	9	SA	
MEDIUM EQUIP SUPPORT (3m)	303	70	PI, LT	
MEDIUM EQUIP SUPPORT (2,5m)	302	16	CVT	
LES CAP	311	12	CT	
MES CAP	2214	4	LT	
MES CAP	306	21	CVT, SA	
MES CAP	779	70	PI	
LMU BRACKET	673	12	CVT	
LABEL SUPPORT & FRAME	400	5	TRFR, CB	
LABEL FRAME	1790	6	BUSBARS	
LABEL FRAME BRACKET	5601	6	BUSBARS	
LABEL BRACKET - 'J' TYPE	403	92	PH DISC, E/SW, ALL LABELS ON ME SUPP.	
LABEL BRACKET - 'L' TYPE	1794	32	ISOL MECH BOX & PH/D ON O/H BM	
MED SUPPORT EARTH STRAP INSULATOR MOUNTING	6603	9	SA	
TOP CAP FOR SURGE ARRESTER FOR USE WITH EXISTING TOP CAP	6326	9	SA	

SCHEDULE E - EQUIPMENT STEELWORK 22kV TERTIARY BAY (STAGE 2 - INTERGRATE - 400kV YARD)				
22kV TERTIARY BAY	AUX TFR SUPPORT (1,5m)		2088	1
	COLUMN	TYPE 'CB'	315	3
		TYPE 'BB'	315	1
		TYPE 'BA'	315	1
TRFR 1 22kV TERTIARY BAYS FOR LOCATION OF EQUIP SEE DRG TD-1380 SHTS 44				



SCHEDULE B - EQUIPMENT STEELWORK 132kV YARD				
TYPE	DRG No 0.54/	No OFF	REMARKS	
ISOLATOR SUPPORT (TRANSVERSE)	5857	16		
ISOLATOR SUPPORT (2 E/S)	5015	6		
EARTH SWITCH SUPPORT 3,6mφ CRS	5952	10	FOR2 - 7, TRFR 1 & B/CPLR A	
CIRCUIT BKR SUPPORT	-	-	TO BE SUPPLIED BY MANUF	
MEDIUM EQUIP SUPPORT (2m)	301	24	CT	
MEDIUM EQUIP SUPPORT (2,5m)	302	81	SA, VT, PI	
MEDIUM EQUIP SUPPORT CAP	306	54	CT, SA, VT	
MEDIUM EQUIP SUPP CAP (FOR PI)	3512	49	PI	
LABEL FRAME	1790	4	BUSBARS 1 & 2	
LABEL FRAME BRACKET	5601	4	BUSBARS 1 & 2	
LABEL BRACKET 'J' TYPE	403	116	PH DISC, E/SW, ISOL, CB	
LABEL BRACKET 'L' TYPE	1794	24	PH DISC ON O/H BM	
ISOLATOR SUPPORT (2 E/S)	5951	2		
MED. EQUIP. TOP CAP	779	2		
SURGE ARRESTERS TOP CAP - USE WITH EXISTING TOP CAP	6326	18		
MED. EQUIP. LINE MATCHING UNIT BRACKET (LMU)	673	4		

SCHEDULE A - MAIN STEELWORK 132kV YARD				
ITEM	MARK	TYPE	DRG No 0.54/	No OFF
COLUMN	C201, C202, C210, C211	NC2 (275kV)	3902	4
	C203, C204, C205, C206, C207, C208, C209, C212, C213, C214, C215	132/C	336 337	11
BEAM	B203-B208	132/39/1	3926 3927	6
	B201, B202	NB5 (275kV)	4781	2
TUBULAR BUSBAR SUPPORT	BS207 - BS278		4320	72
OPERATIONAL FLOODLIGHT MAST	OLM05-OLM06	24m	4658	2
EARTHWIRE SUPP (SEPERATE)	C203, C204, C205, C206, C207, C208, C209, C212, C213, C214, C215	EW	336 337	11
				25
U-BOLT				

SCHEDULE B - EQUIPMENT STEELWORK 132kV YARD (STAGE -2 400kV YARD INTEGRATION)				
TYPE	DRG No 0.54/	No OFF	REMARKS	
MEDIUM EQUIP SUPPORT (2,5m)	302	3		
MEDIUM EQUIP SUPPORT CAP	306	3		
SURGE ARRESTERS TOP CAP USE WITH EXISTING TOP CAP	6326	3		

- NOTES:
- ☒ INDICATES EARTHWIRE SUPPORT
 - 10.668 INDICATES HEIGHT OF BEAM Q ABOVE FDN LEVEL.
 - EQUIPMENT SUPPORTS INDICATED AS BEING GROUPED, SHALL BE ALIGNED, PLUMBED, SQUARED & LEVELLED AS A GROUP AND INDIVIDUALLY TO AN ACCURACY OF ±2mm. (CLASS 'A' TOLERANCE)
 - SUPPORTS NOT GROUPED SHALL BE ALIGNED, PLUMBED, SQUARED & LEVELLED TO AN ACCURACY OF ±6mm. (CLASS 'B' TOLERANCE)
 - ARROW ON BAY THUS → INDICATES ORIENTATION OF EQUIPMENT WHEN LINED UP WITH SIMILAR ARROW IN BAY LAYOUT SCHEDULE; THE BUBBLE AT THE OTHER END INDICATES THE BAY NO.
 - BS207 INDICATES BUSBAR SUPPORT
 - OP. FLOODLIGHT MAST WITH LADDER POSITION SHOWN THUS: ⊕

2		STAGE 2 400kV YARD INTEGRATION	ALG	EN	AA	22/01/10	19528	KEY PLAN
1		COLUMN C215 POSITION REVISED	ALG	EN	AA	14/01/10	19527	STATION ELECTRIC
REV	REVISION DESCRIPTION	BY	CHKD	AUTH	DATE	REFERENCE DRAWINGS		
APPROVED BY		A. ADAM		Eskom Transmission		ESKOM HOLDINGS LIMITED		
DATE		22 JUL 2009		16 JUL 2009		2002/015527/06		
CHECKED BY		E. MALICKER		A. L. GRANGE		GUMENI STEELWORK MARKING PLAN		
DATE		22 JUL 2009		16 JUL 2009		0.08/19531		
DRAWN BY		A. L. GRANGE		SHEET NUMBER		REVISION		
DATE		16 JUL 2009		SCALE 1:500		2		