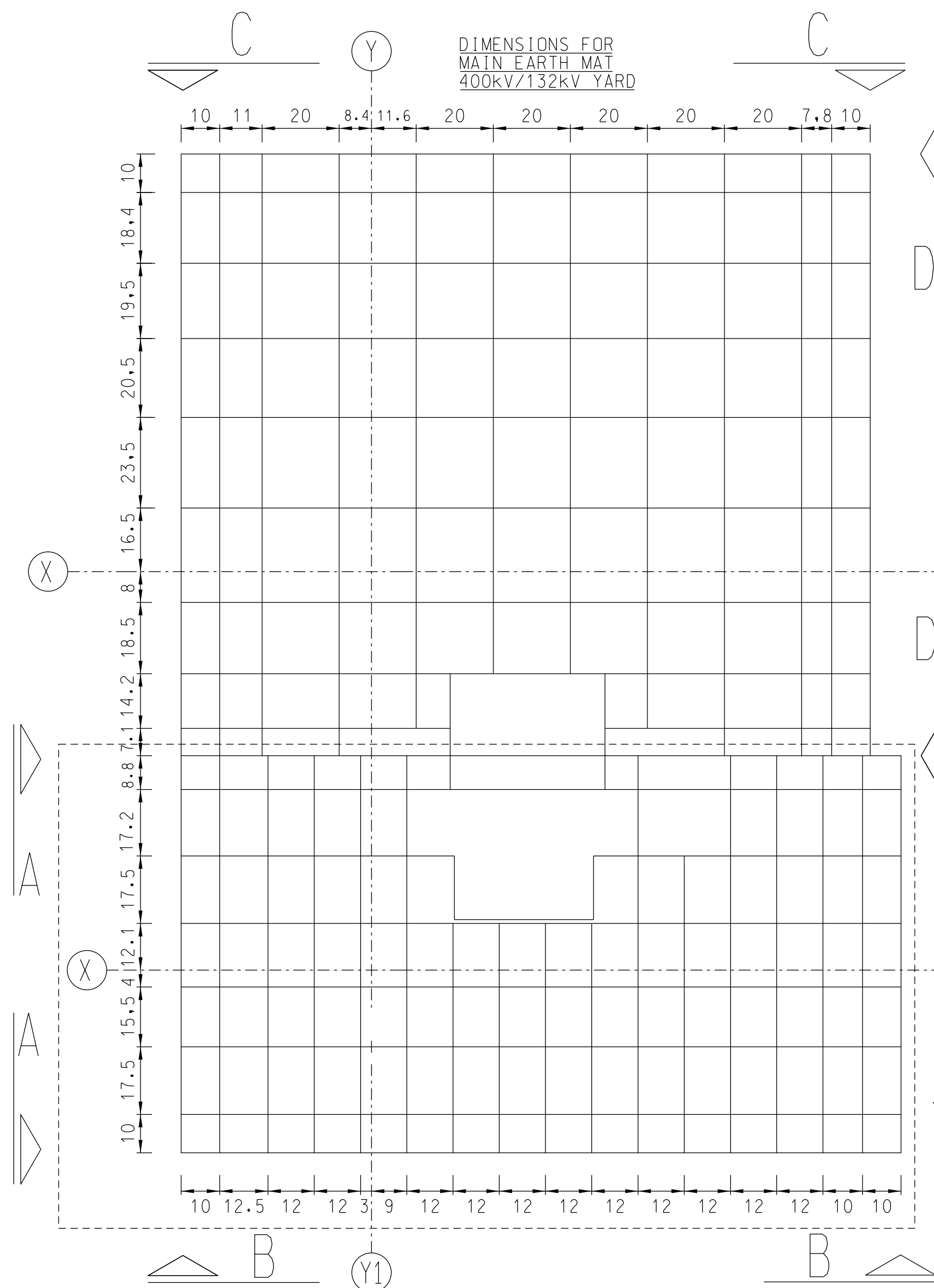
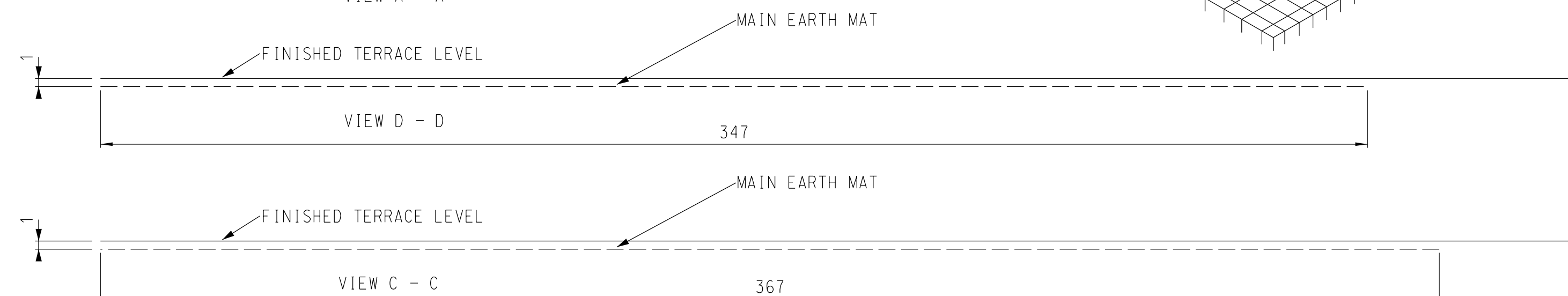
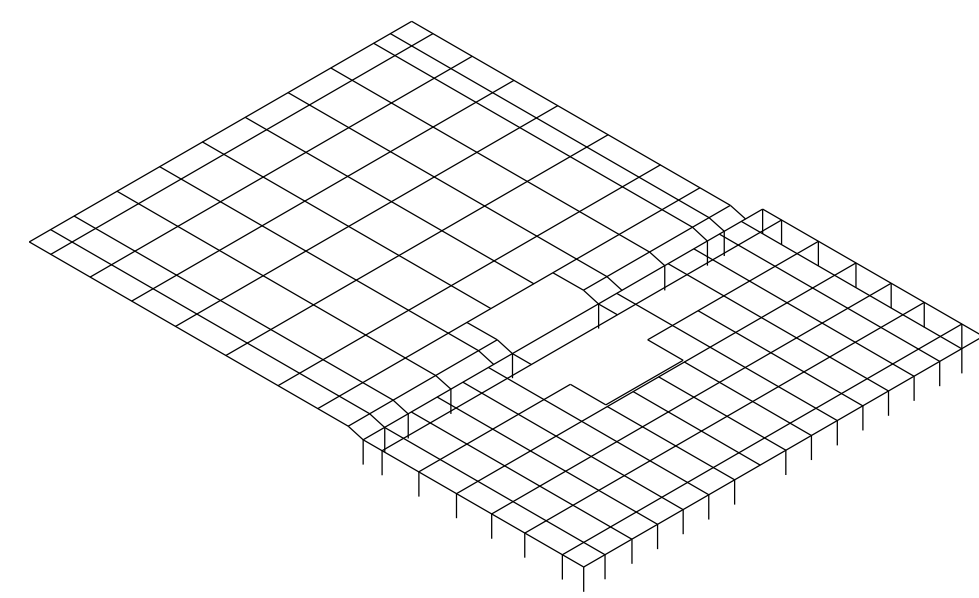
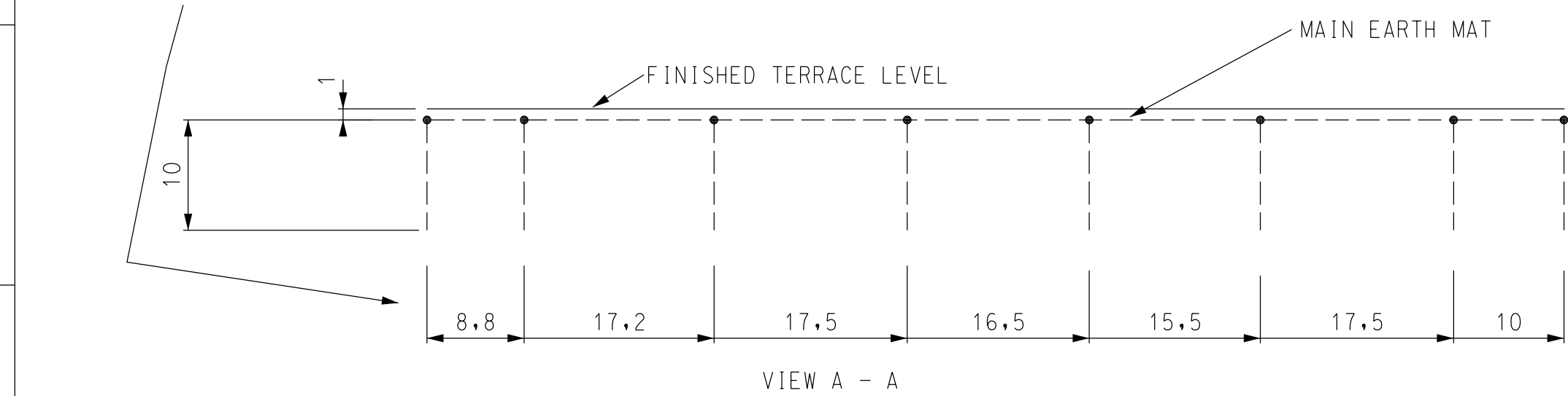
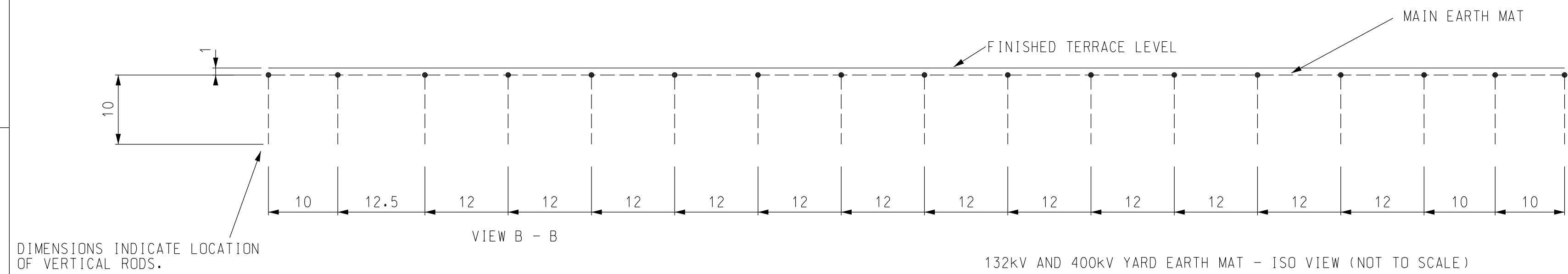
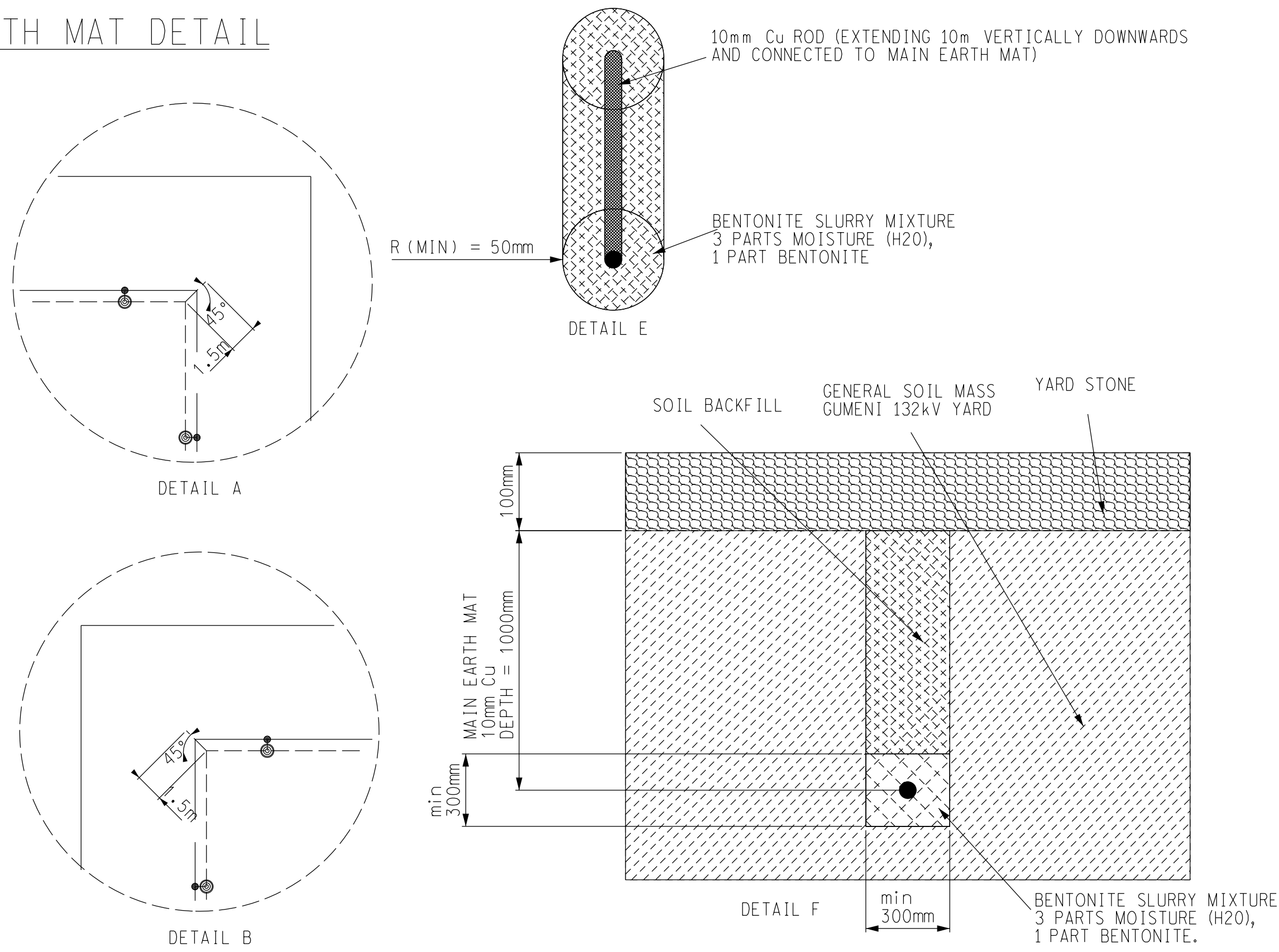


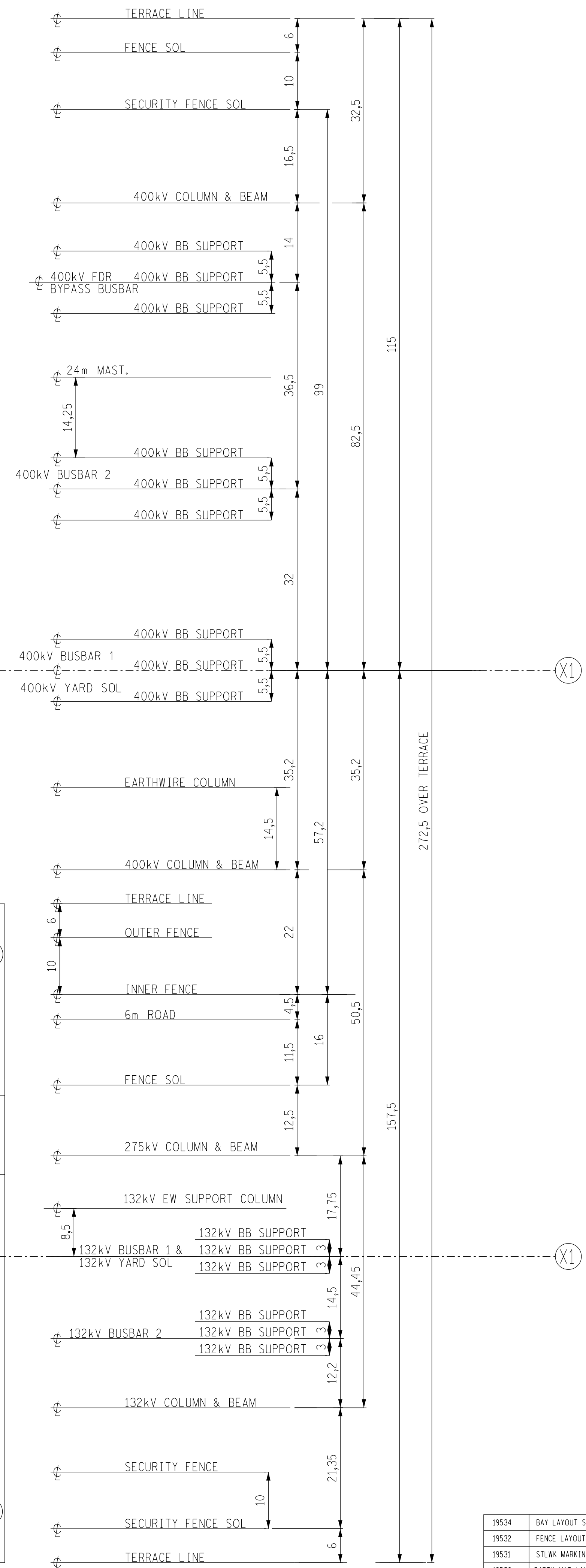
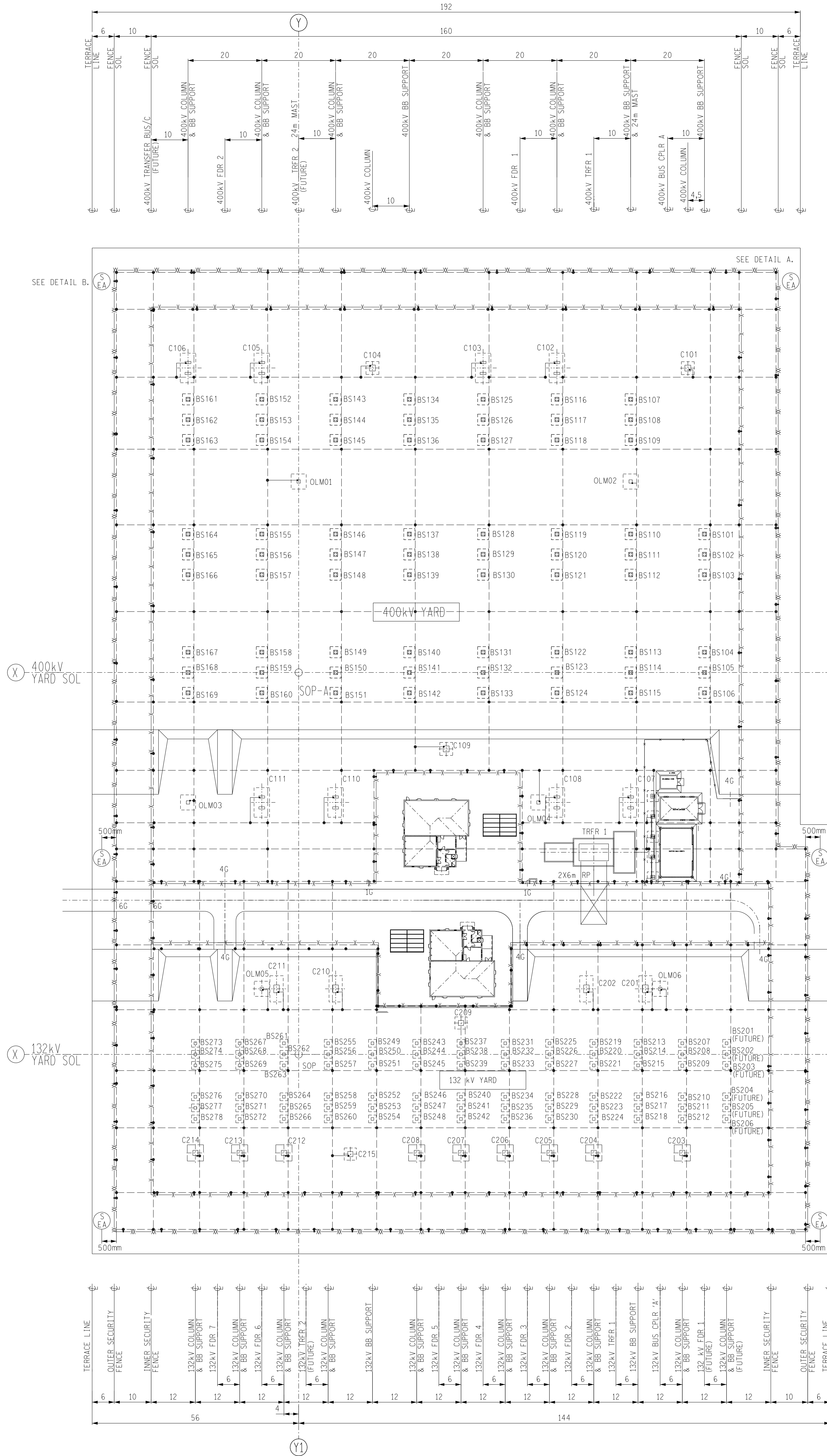
The figure consists of two separate diagrams, each enclosed in a rectangular box. The left diagram is labeled '132 kV BUSBAR SUPPORT EARTHING' and shows a vertical dashed line with three solid dots representing earthing points. Three square busbar support structures are arranged vertically along this line, each with a horizontal line connecting it to the earthing point. The right diagram is labeled '400 kV BUSBAR SUPPORT EARTHING' and shows a similar vertical dashed line with three solid dots. Three square busbar support structures are arranged vertically, but each has a horizontal line connecting it to a separate earthing point, indicating a more complex earthing arrangement for the higher voltage.

EARTH MAT STEP AND TOUCH
POTENTIALS RATED FOR 38kA.
COMPULSORY:
DESIGN NEED TO BE VERIFIED
BY ACTUAL FIELD MEASUREMENTS.



MAIN EARTH MAT FOR 132kV YARD (STAGE 1)		MAIN EARTH MAT FOR 400kV YARD (STAGE 2)	
EARTHING AND HARDWARE SCHEDULE A		EARTHING AND HARDWARE SCHEDULE B	
DESCRIPTION	QUANTITY	DESCRIPTION	QUANTITY
CRIMPED JOINTS (ROD TO ROD)	133	CRIMPED JOINTS (ROD TO ROD)	108
EARTH CLAMPS:		EARTH CLAMPS:	
BUSBAR SUPPORTS	216	BUSBAR SUPPORTS	276
MAIN STEELWORK	17	MAIN STEELWORK	20
FENCE	116	FENCE	49
CRIMPED JOINTS TO MAIN EARTH MAT:		CRIMPED JOINTS TO MAIN EARTH MAT:	
BUSBAR SUPPORTS	240	BUSBAR SUPPORTS	368
MAIN STEELWORK	34	MAIN STEELWORK	40
FENCE	232	FENCE	49
Ø10mm Cu ROUND (EXCL EQUIP E/TAILS)	3500m	Ø10mm Cu ROUND (EXCL EQUIP E/TAILS)	4050m
VERTICAL RODS, Ø10mm Cu ROUND	52m	SACRIFICIAL EARTH MAT ANODES	2
CRIMPED JOINTS (DOWNROD TO MAIN EARTH MAT)	50		
SACRIFICIAL EARTH MAT ANODES	4		

- NOTES:
1. EARTHING SHOULD BE IN ACCORDANCE WITH TST41-8077 AND DRG NO. 0.54/393.
 2. MAIN EARTH MAT BURIAL DEPTH TO BE 1000mm BELOW TERRACE LEVEL.
 3. MAIN EARTH MAT SHOWN THUS: —————
 4. $2 \times \phi 10\text{mm}$ Cu EARTH TAILS SHOWN THUS: _____
 5. CONNECTION SHOWN THUS: •
 6. FOR BUSBAR SUPPORT EARTHING SEE DETAIL C AND D.
 7. BAY EQUIPMENT EARTHTAILS TO BE ROUTED DIRECTLY TO MAIN EARTH MAT AS APPLICABLE.
 8. ALL CIVIL WORKS TO BE CARRIED OUT TO SANS 1200.
 9. REFER TO 0.54/390 FOR STANDARD CIVIL DETAIL, eg DTL 42 - SLEEVEPIPE FOR E/MAT UNDER ROAD.
 10. $\left(\begin{smallmatrix} S \\ \text{CA} \end{smallmatrix} \right)$ — INDICATES POSITION OF SACRIFICIAL EARTH MAT ANODES. SEE DETAIL A AND DETAIL B.
 11. SEE DETAIL E FOR VERTICAL DOWN Cu RODS FOUND IN 132kV YARD ONLY (NOT TO SCALE)
 12. SEE DETAIL F FOR MAIN EARTH MAT 132kV YARD ONLY (NOT TO SCALE)
 13. FOUNDATION LEGEND
C - MAIN COLUMN
BS - BUSBAR SUPPORT
OLW - OVERHEAD LIGHTING MAST
G - GATE

[illegible]