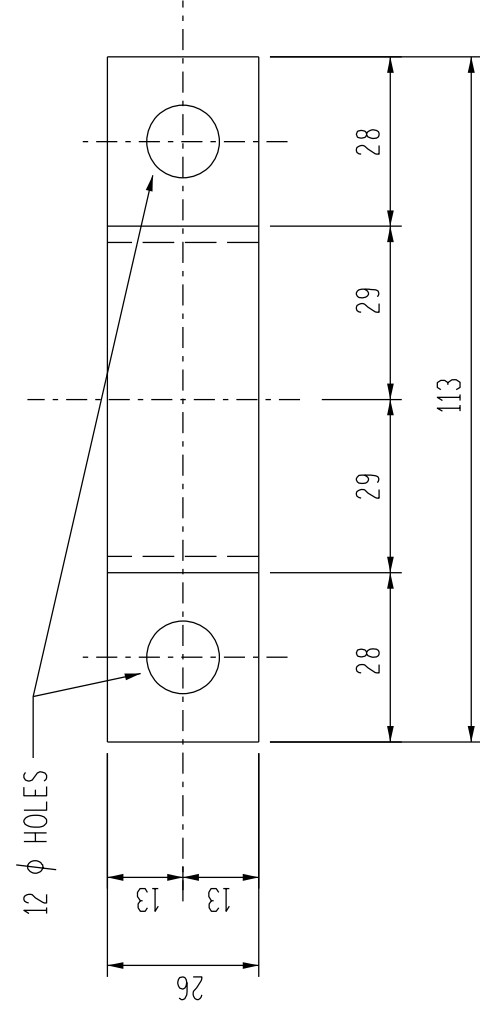


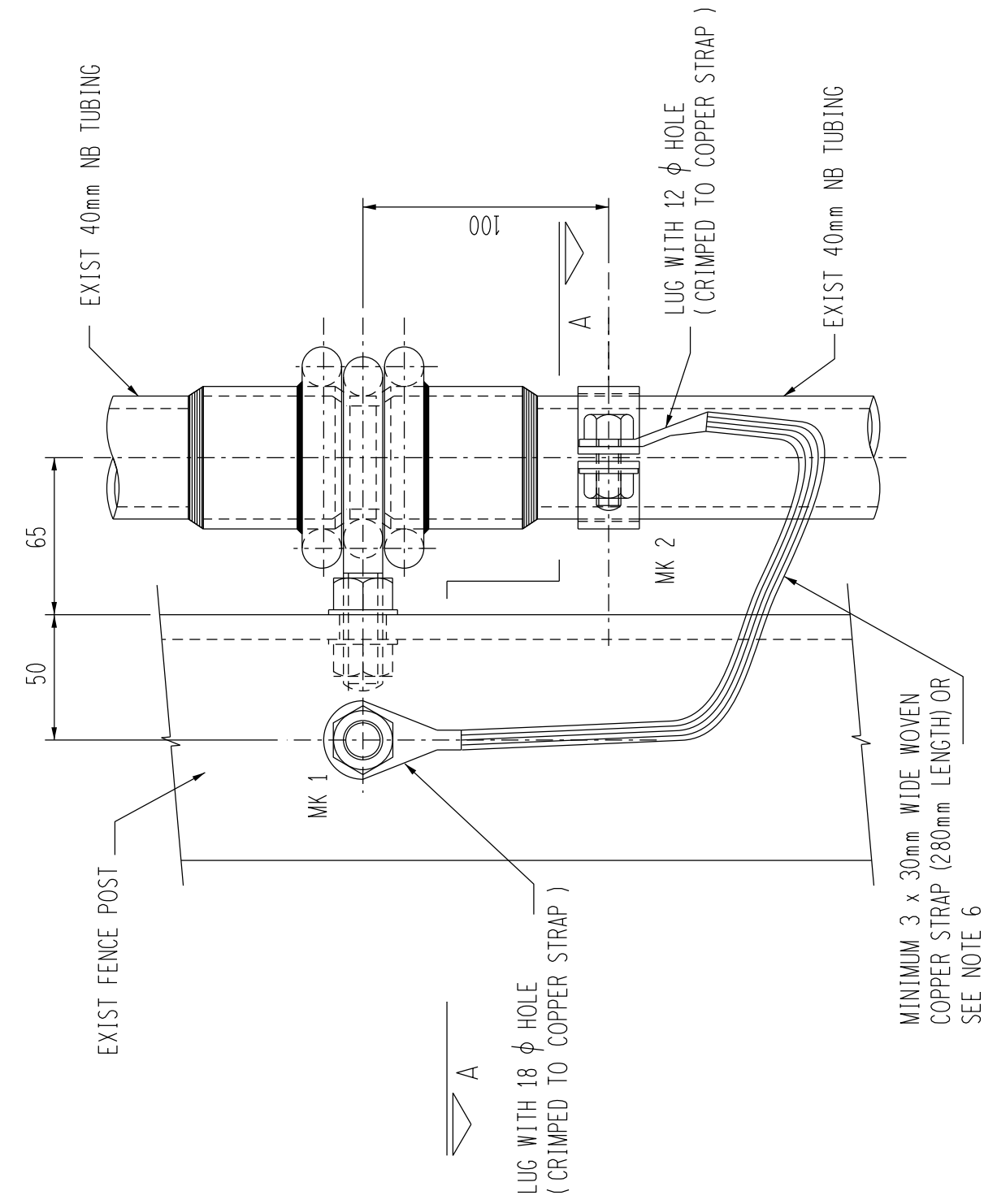
## DETAIL OF CLAMP

2 N° OFF  
1:12,5



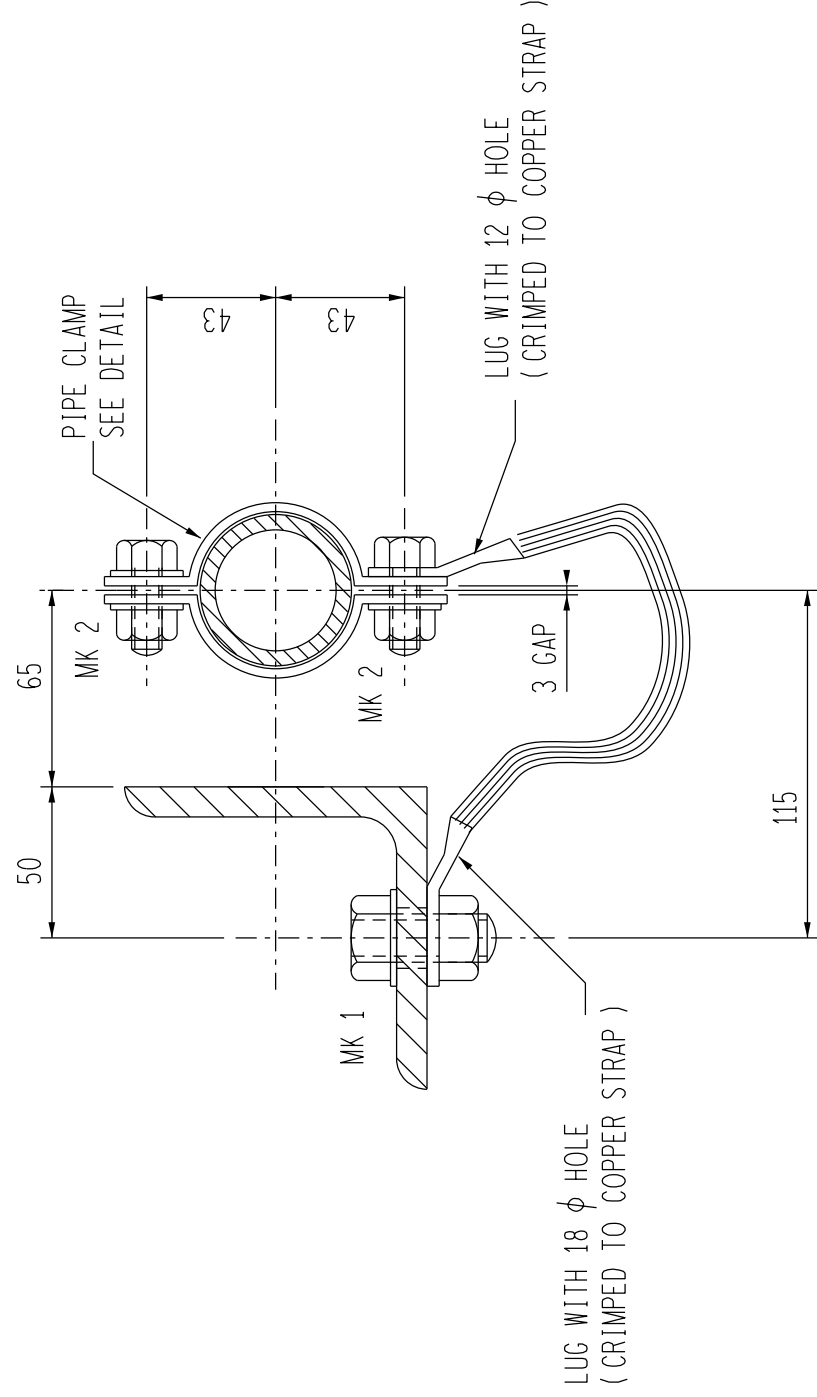
PLAN B-B

1:12,5



ELEVATION

1:25



SECTION A-A

---

1:25

BOLT SCHEDULE			
Mk	DIA	LENGTH	No. OFF
1	M16	40	1
2	M10	35	2

MASS		
STRUCTURE	BOLTS	TOTAL
0,6 kg	0,18 kg	0,78 kg

## NOTES:

- 1 - ALL STEEL TO BE GRADE 300WA HOT DIP GALVANISED TO SANS 121
- 2 - ALL BOLTS & NUTS TO BE GRADE 4.8.
- 3 - HOLES SIZES AS STATED ON DRAWING.
- 4 - ALL MARKS TO BE STAMPED ONTO STEELWORK AND SHALL BE CLEARLY LEGIBLE AFTER GALVANISING.
- 5 - FOR M10 BOLT ( MK 2 ) TO BE SET SCREWS.
- 6 - ALTERNATIVE USE EARTH KIT (SAP186255), CONSISTING OF 700mm LONG 50mm SQUARE Cu CABLE WITH LUGS ON BOTH SIDES AND 1 CLAMP

1	REVISED EARTHSTRAP AND NOTE 6 ADDED	C.F.	P.D	D.N	14/7/2015		
REV	REVISION DESCRIPTION	BY	CHKD	AUTH	DATE	REFERENCE DRAWINGS	
APPROVED BY		ESKOM HOLDINGS LIMITED					
DJC, Senekal		REG NO.					
DATE 21/02/2013		2002/015527/06					
CHECKED BY		HV YARD SAFETY FENCE					
D.S		EARTHING CLAMP FOR SUBSTATION GATES					
DATE 21/02/2013		©					
DRAWN BY		PAUL DOYLE					
DATE 20/02/2013		0.54/4963				SHEET NUMBER	REVISION
SCALE AS SHOWN						5	1