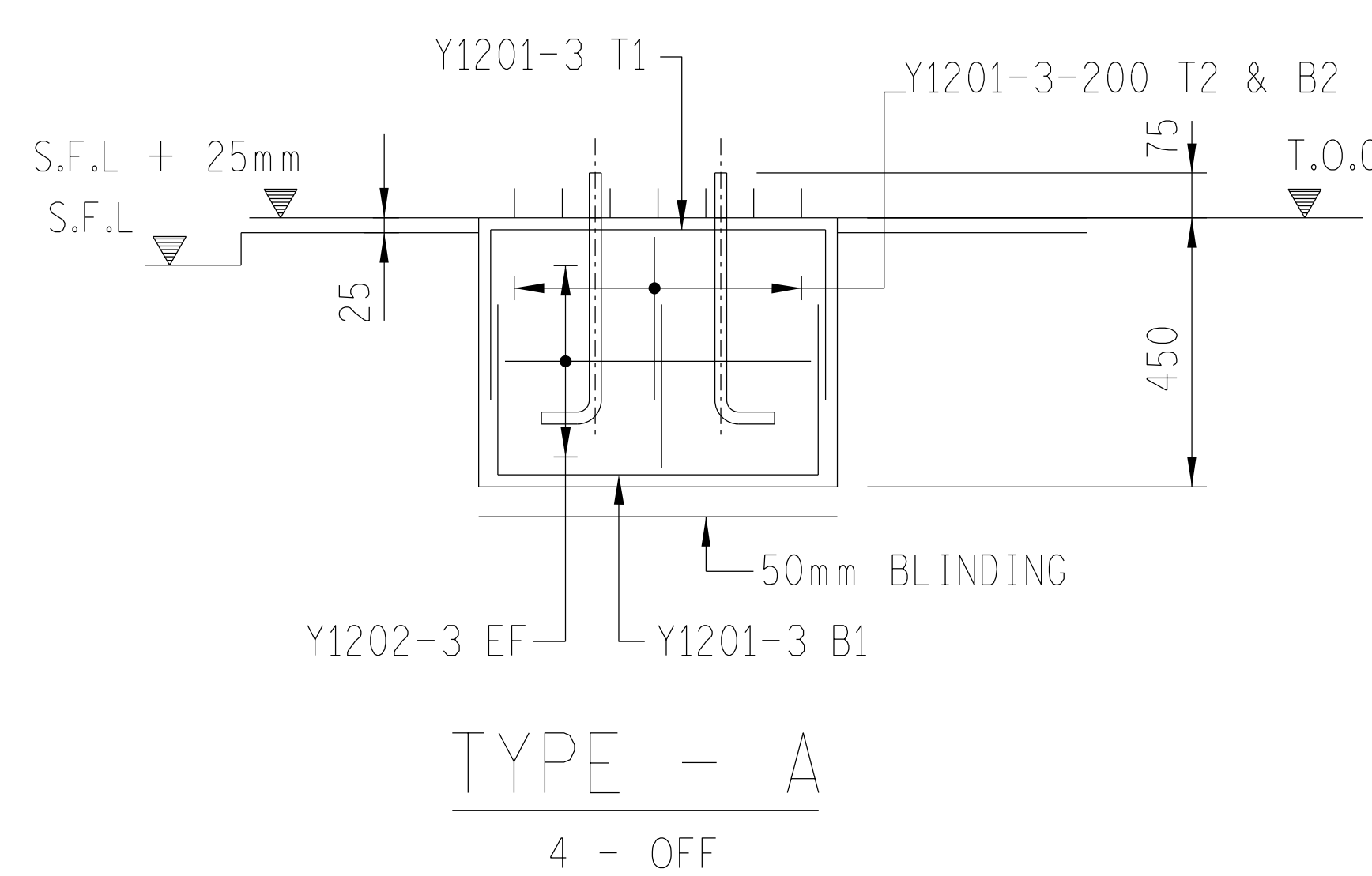


PLAN ON TYPE A &amp; B



Y1202-4-200 EF

S.F.L. + 25mm

75

Y1203-3 T1

Y1203-3-200 T2 & B2

800

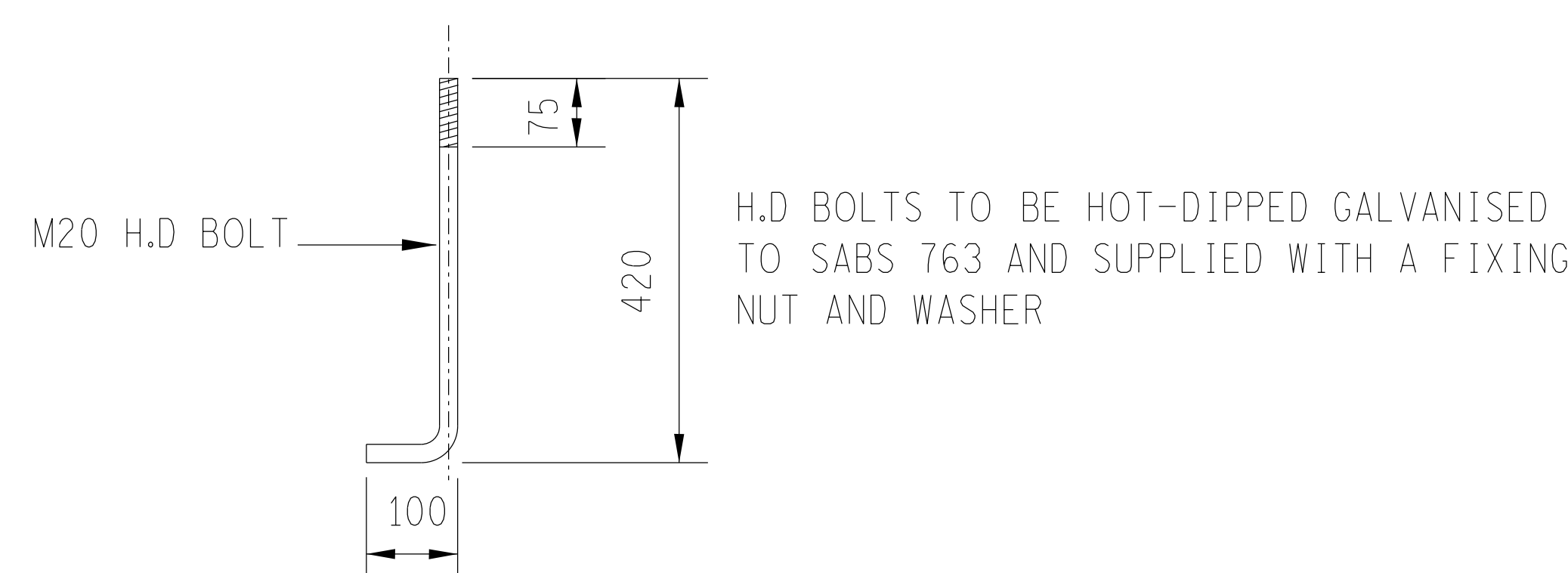
430

50mm BLINDING

Y1203-3 B1

TYPE - B

2 - OFF



### H.D BOLT DETAIL

N.T.S

MASS OF ONE BOLT, COMPLETE  
WITH NUT AND WASHER = 1,6kg.

NO' OF BOLTS REQD. = 40

[illegible]

## NOTES

- 1) CONCRETE STRENGTHS AT 28 DAYS/STONE SIZE : BLINDING = 15/19  
FOUNDATIONS = 25/19
- 2) MIN. CONCRETE COVER TO REINFORCEMENT = 50mm
- 3) THESE FOUNDATIONS HAVE BEEN DESIGNED TO FOUND ON COMPETENT FOUNDING MATERIAL  
HAVING A MIN. GROUND BEARING CAPACITY OF 150KPa
- 4) IN ALL CASES, COMPETENCY OF FOUNDING MATERIAL MUST BE ESTABLISHED BY A  
QUALIFIED GEOTECHNICAL ENGINEER
- 5) STEEL TEMPLATE TO BE USED FOR SETTING OUT H.D. BOLTS
- 6) a) H.D. BOLTS SUPPLIED BY CIVIL CONTRACTOR COMPLETE WITH NUTS & WASHERS  
AND TO BE GALVANISED TO S.A.B.S 763 (HOT DIPPED) AND MUST BE CLEARLY MARKED  
WITH DIAMETER, GRADE AND BASE TYPE  
b) THREAD OF NUTS TO BE OVER-CUT TO SABS 763 TO ALLOW FOR THE THICKNESS OF GALVANISING
- c) ANY DAMAGE TO THE GALVANISED SURFACES SHALL BE REPAIRED WITH AN APPROVED ZINK-METAL SPRAY OR  
INORGANIC ZINK-RICH PAINT COMPLYING WITH S.A.B.S. 926. APPLICATION TO SUPPLIERS SPECIFICATIONS
- 7) ALL TOP EDGES OF CONCRETE ABOVE GROUND TO HAVE 20 x 20 CHAMFERS
- 8) ALL WORK TO BE IN ACCORDANCE WITH S.A.B.S. 1200 SERIES SPECIFICATIONS

REV	REVISION DESCRIPTION	DRAWN	CHKD	AUTH	DATE	REFERENCE DRAWINGS			
APPROVED BY		 <b>Eskom</b>				Eskom Holdings SOC Ltd Reg No 2002/015527/30			
A. MANELI									
DATE	19-3-2021								
CHECKED BY		TRANSMISSION SUBSTATIONS MAINTENANCE AND WORKSHOP BUILDING MAINTENANCE WORKSHOP CRAWL BEAM FOUNDATIONS CONCRETE AND REINFORCEMENT DETAILS ©							
A. KAKA									
DATE	29-1-2021								
DRAWN BY									
DB NAUDE									
DATE	17-8-2020	0.54/8828				SHEET NUMBER		REVISION	
SCALE AS SHOWN						9		0	

## FINAL DESIGN FOR CONSTRUCTION