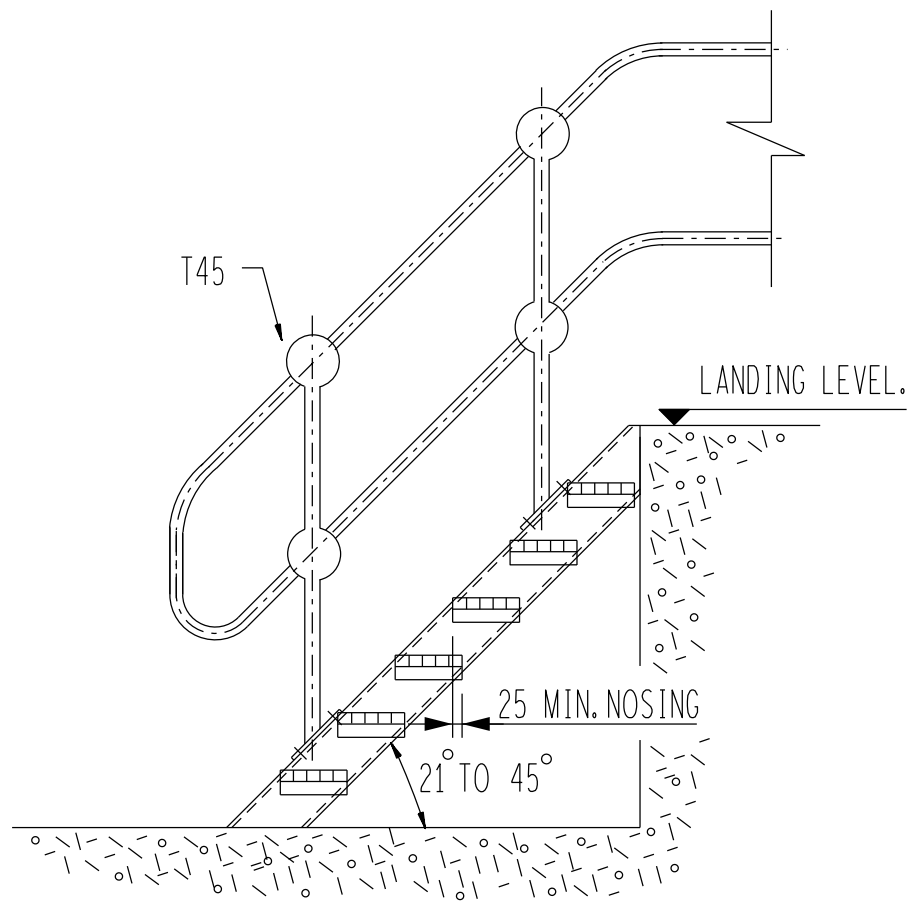
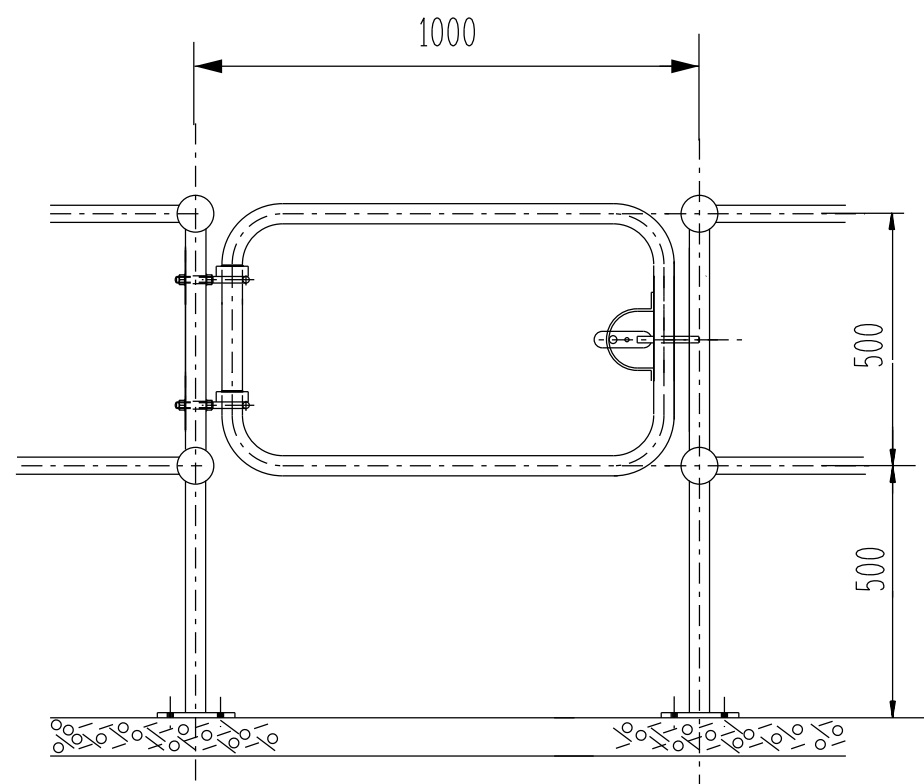


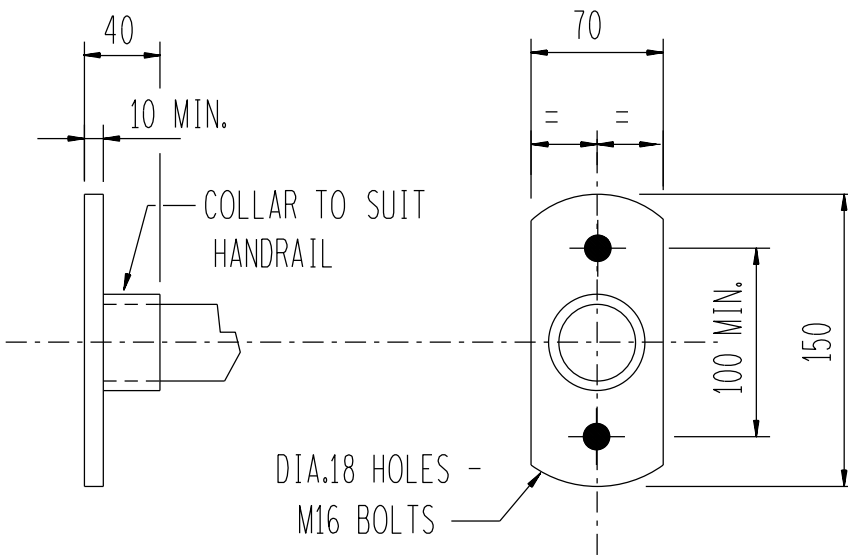
THIS DRAWING DOES NOT APPLY TO EMERGENCY ESCAPE ROUTES.



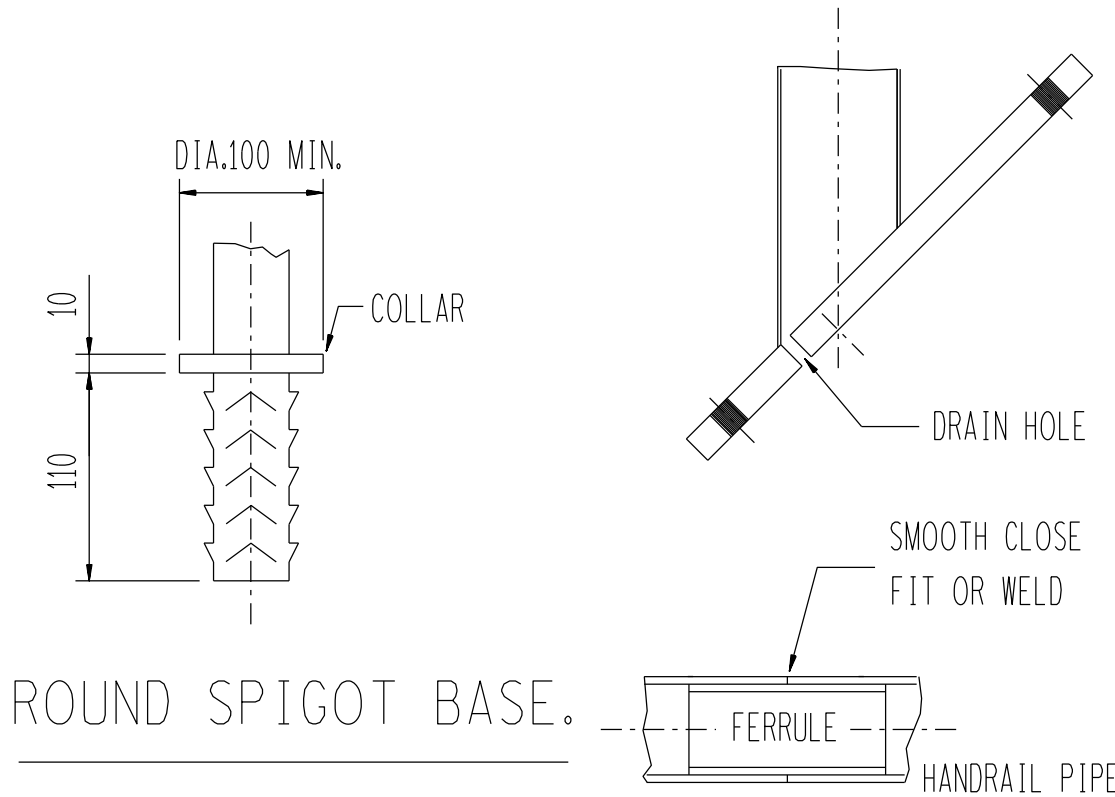
STEEL STAIRWAY TO CONCRETE.



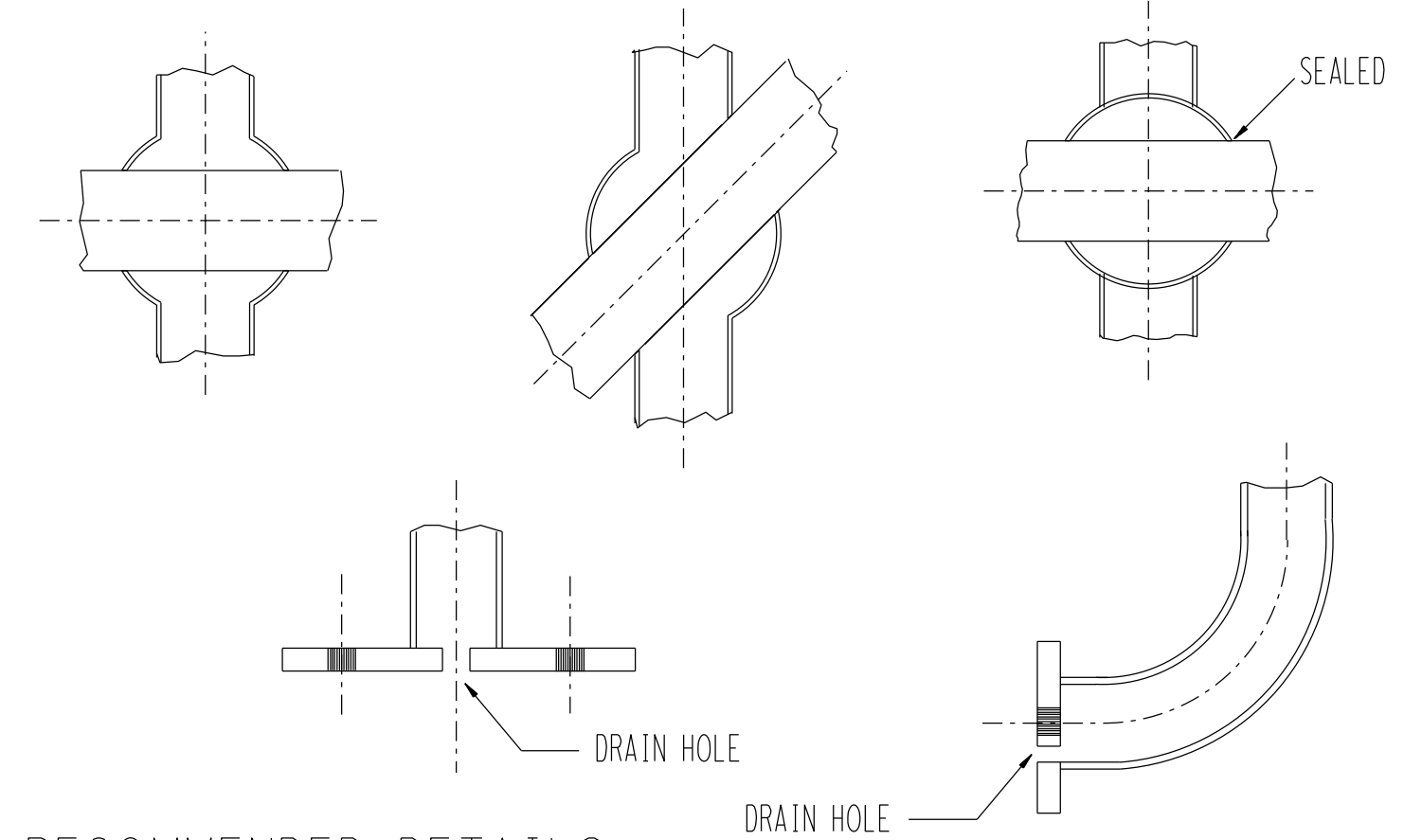
GATE DETAIL



WALL FLANGE.

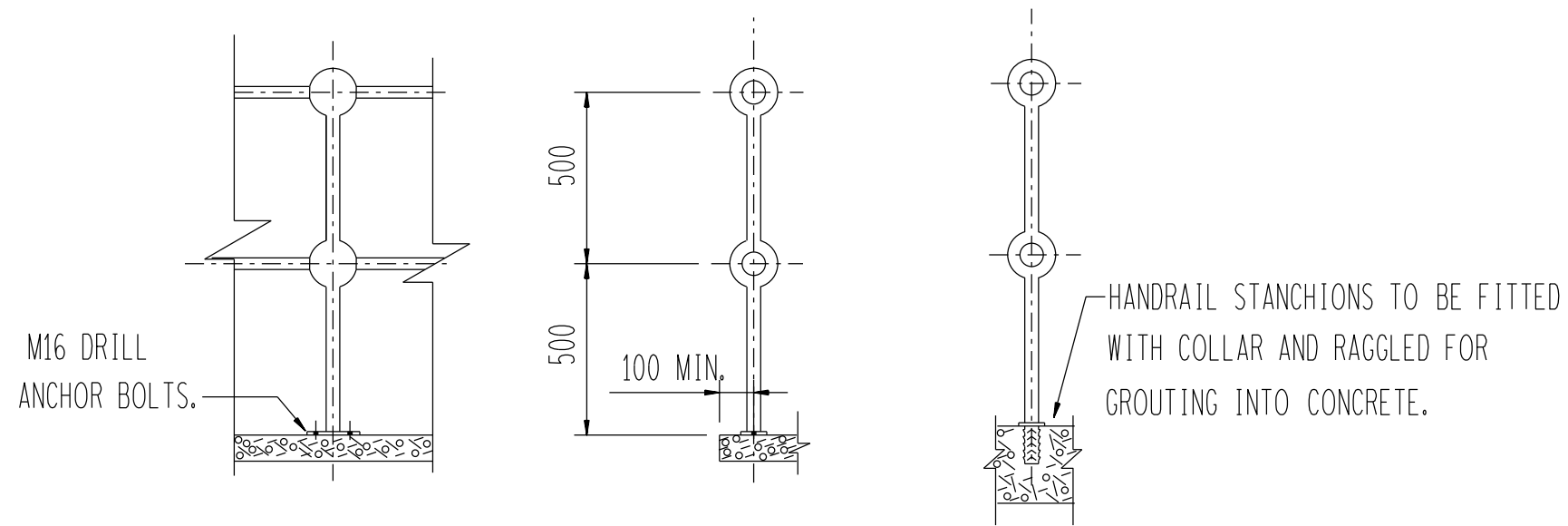


ROUND SPIGOT BASE.

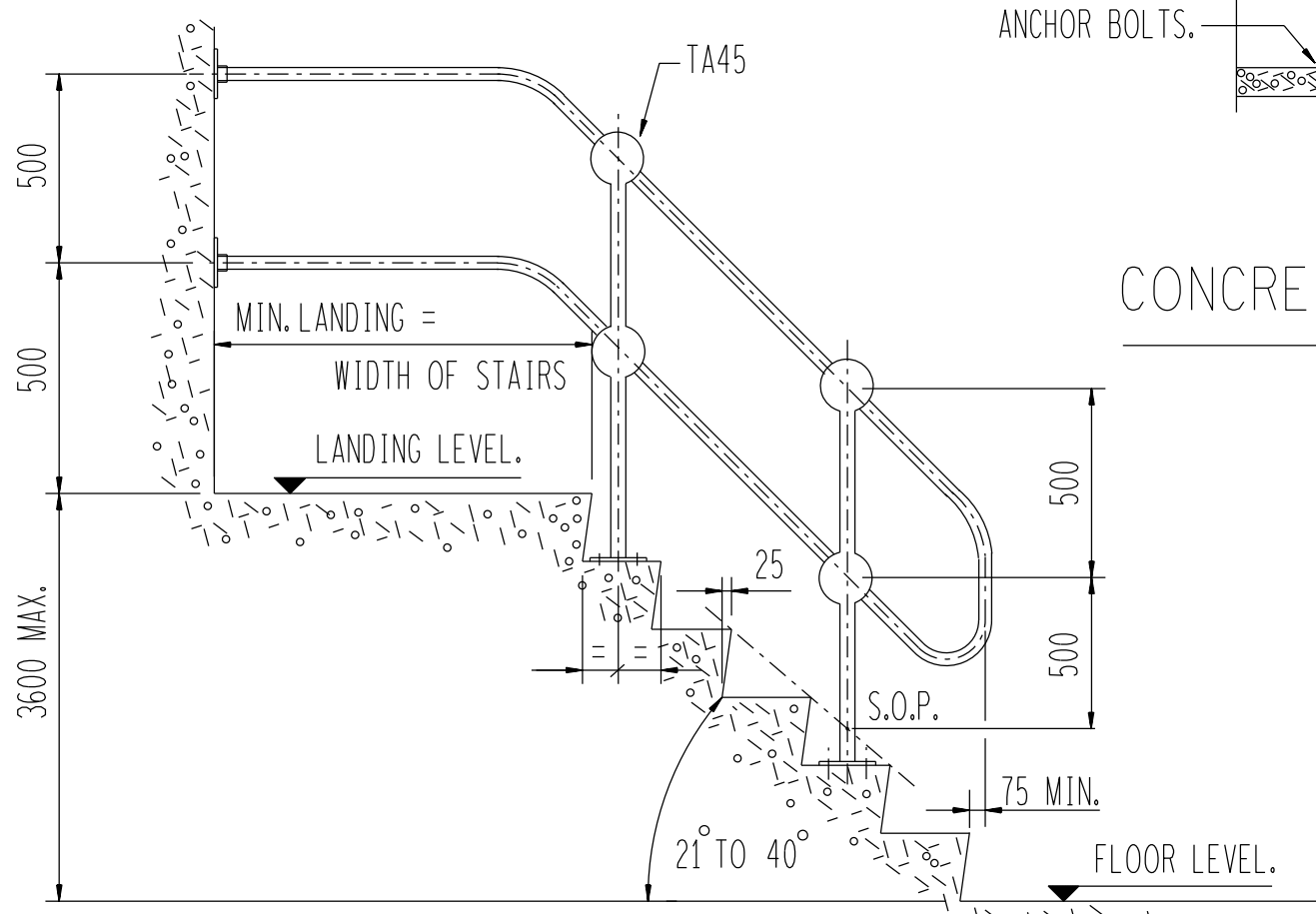


RECOMMENDED DETAILS.

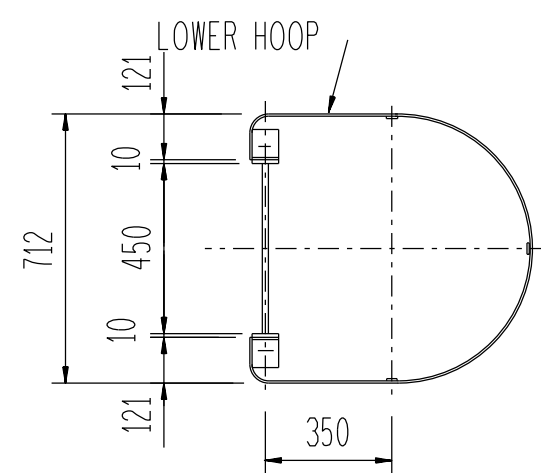
(THERE SHOULD BE NO INTERNAL MOISTURE TRAPS OR AIR POCKETS.)



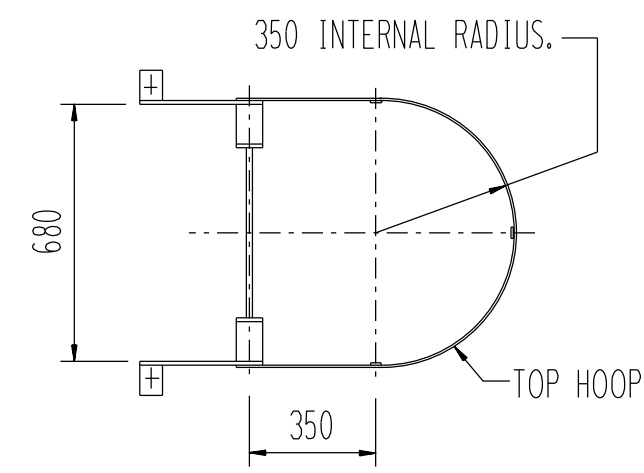
CONCRETE MOUNTED STAIR AND WALL STANCHIONS.



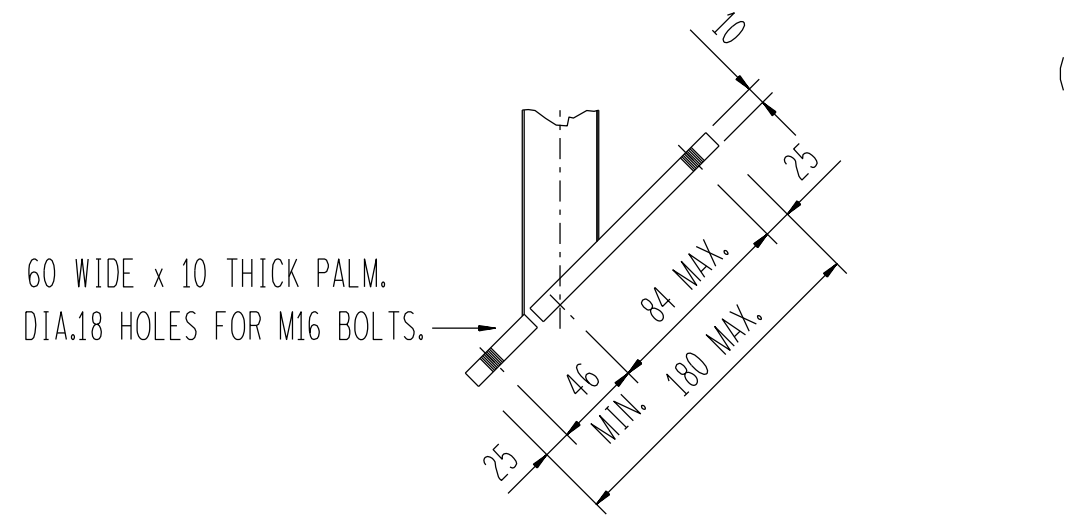
CONCRETE STAIRWAY.



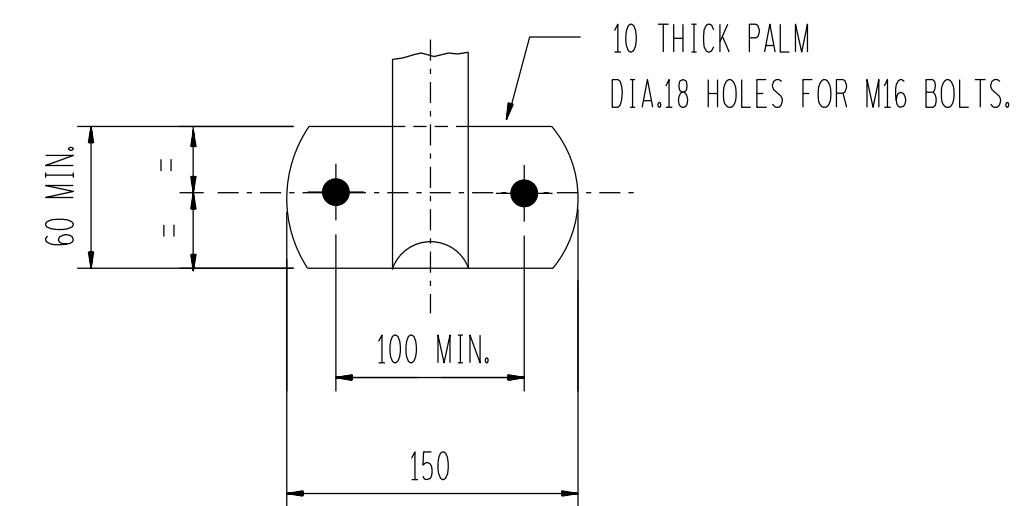
SECTION D-D.



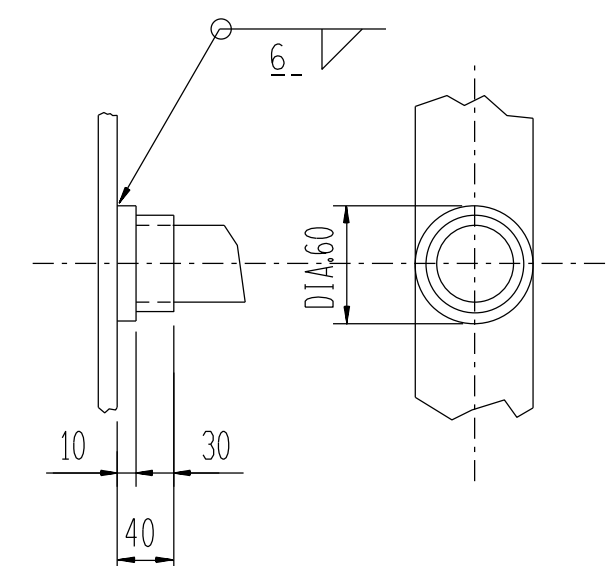
VIEW C.



2 - HOLE INCLINED PALM.

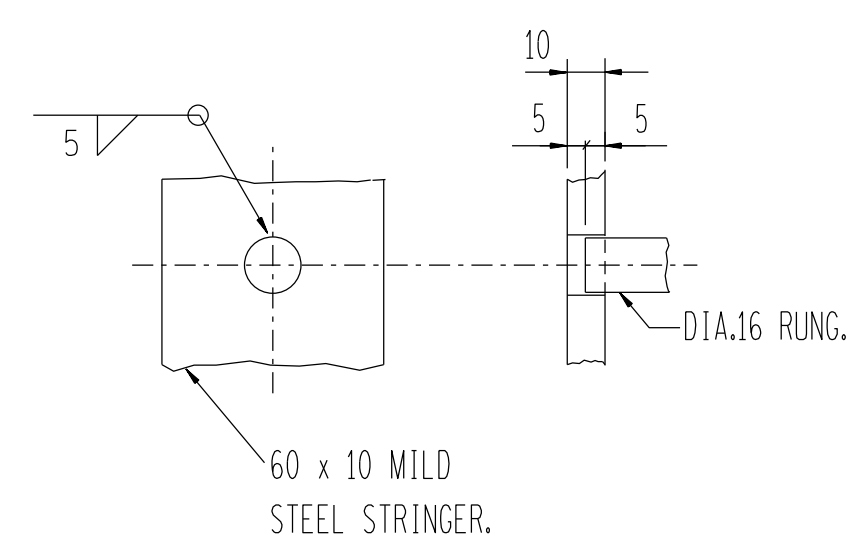


2 - HOLE PALM.

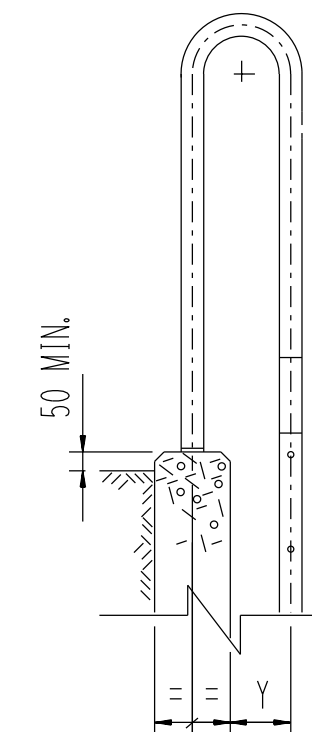


DETAIL 'A'

| TYPE OF LANDING. | 'X' MIN. | 'Y' MAX. |
|------------------|----------|----------|
| CONCRETE | 100 | 160 |
| STEELWORK | 60 | 200 |

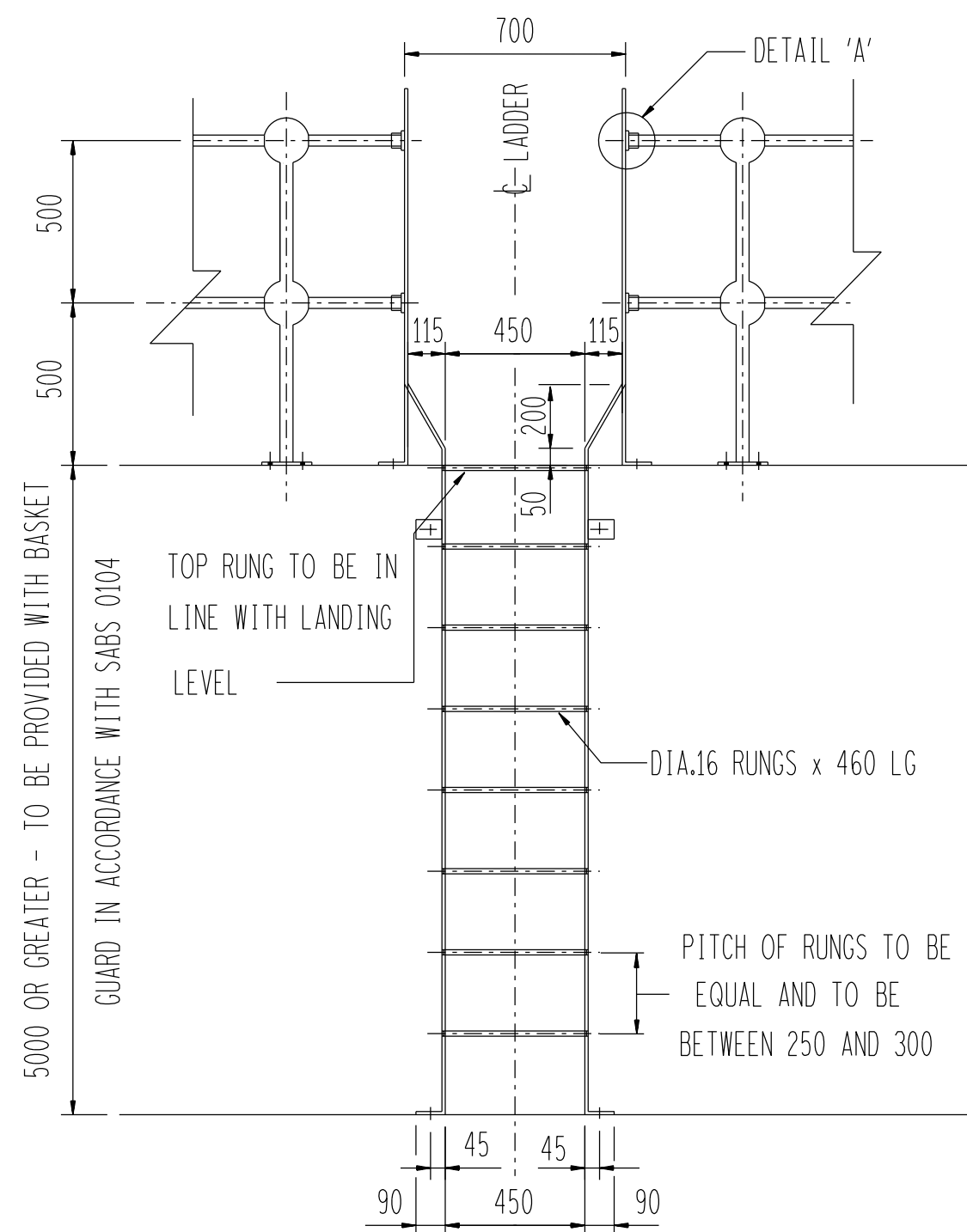


DETAIL 'B'.

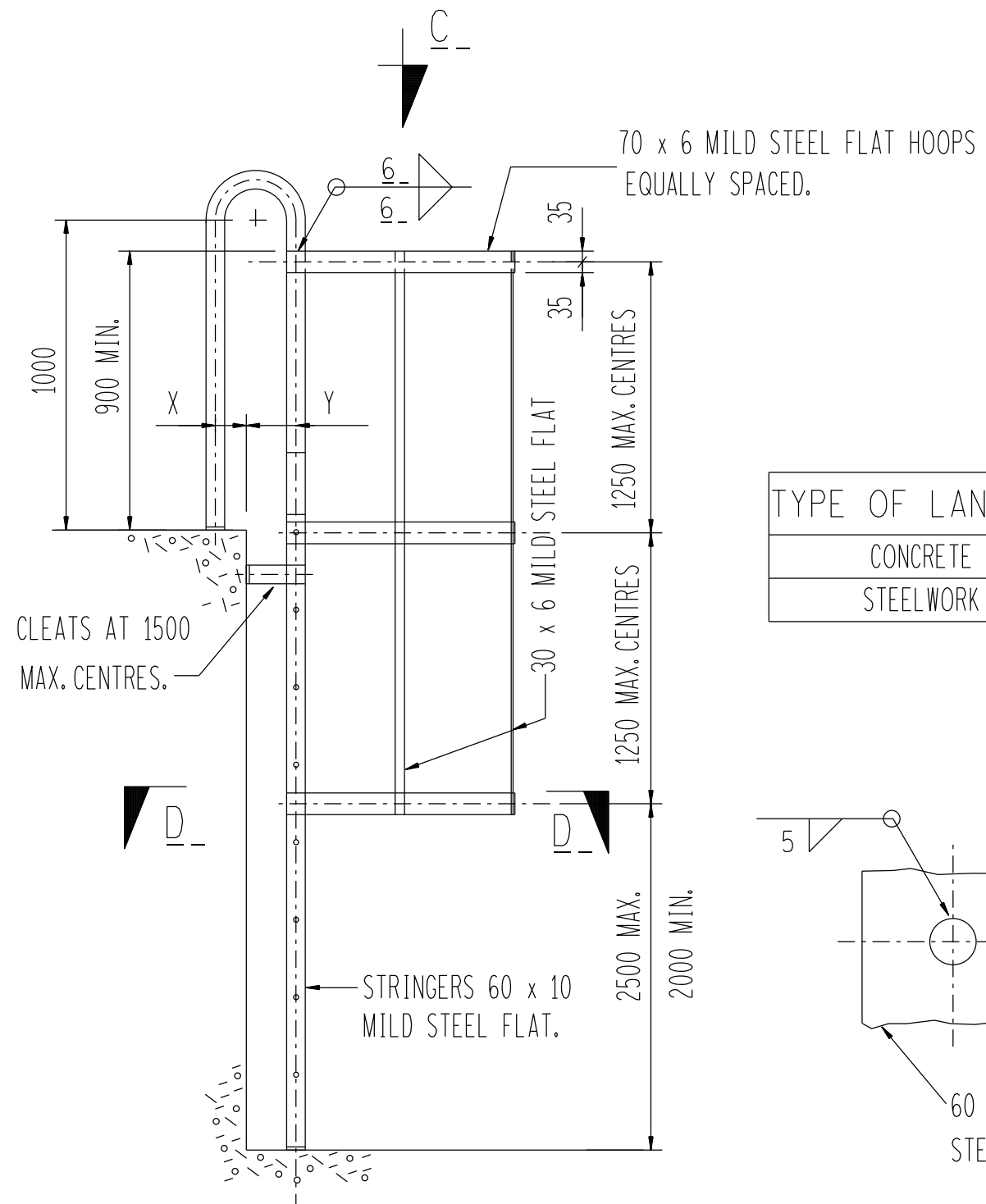
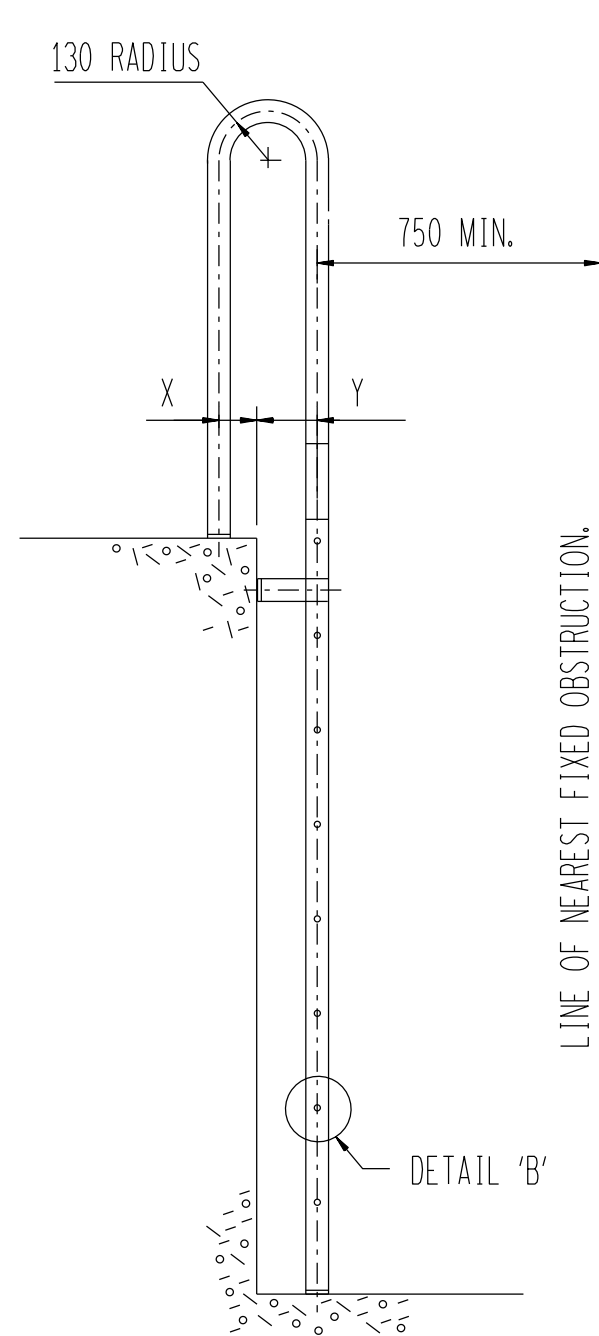


TOP OF WALL MOUNTING.

| | |
|---|-------|
| PLOT SCALE | 1:150 |
| CAD DRAWING NAME: | |
| THIS DRAWING HAS BEEN CREATED ON A SYSTEM AND ANY AMENDMENT TO THE DR MUST BE EFFECTED ONLY ON THE C.A.D. | |


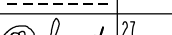


CAT LADDERS.



- 1.) HEADROOM ABOVE STAIRS AND LANDING NOT LESS THAN 2150mm ABOVE TREAD.
- 2.) REEDING ON CONCRETE STAIRS TO BE 75mm MIN.
- 3.) SIGHTING STRIP ON STEEL STAIRS AND 70° LADDERS TO BE NON SLIP AND CONTRAST FROM TREAD.
- 4.) STEEL AND CONCRETE RISERS TO BE BETWEEN 180mm & 190mm IF POSSIBLE, WITH A MAX RISER OF 215mm.
- 5.) ALL WELDING TO BE CONTINUOUS UNLESS OTHERWISE NOTED.
- 6.) HANDRAIL AND HANDRAIL STANCHIONS TO THE REQUIREMENTS OF THE LATEST EDITIONS OF S.A.B.S. 0104 (SAFETY ASPECTS), S.A.B.S. 0160 (LOADINGS) AND S.A.B.S. 0162 (DESIGN).
- 7.) HANDRAILING: a.) HEIGHT TO KNEE RAIL 500mm, FROM FLOOR LEVEL.
b.) HEIGHT TO TOP RAIL 1000mm, FROM FLOOR LEVEL.
c.) CONTINUOUS KNEE AND HANDRAIL MIN 33mm OUTSIDE DIA AND 2.5mm THICK.
- 8.) STANCHIONS: d.) MINIMUM 42mm OUTSIDE DIA AND 3mm THICK THROUGHOUT, (SEE SPECIFICATIONS FOR MATERIAL GRADES) AT A MAXIMUM OF 1800mm CENTRES.
- 9.) STANCHION CENTRES: f.) ON STAIRS WOULD BE 1000mm.
g.) PLATFORM AREAS 1500mm.
- 10.) ALL STEELWORK TO BE HOT DIP GALVANISED TO SABS 763.
- 11.) ANGLE HANDRAIL STANCHIONS ACCEPTABLE ONLY WHEN SPECIFIED.
- 12.) KICK PLATES TO BE A MINIMUM OF 100mm ABOVE FLOOR LEVEL.
- 13.) NO KICK PLATES AT THE ENTRANCE OF LADDERS AND STAIRS.
- 14.) NO FLIGHT OF STAIRS SHALL RISE MORE THAN 3600mm VERTICALLY WITHOUT AN INTERMEDIATE LANDING.
- 15.) MINIMUM WIDTH OF STAIRS TO BE 750mm UNLESS OTHERWISE NOTED.
- 16.) DOORS AT LANDINGS SHALL BE ARRANGED TO SWING OPEN, AWAY FROM STAIRS.
- 17.) NO CASTINGS ALLOWED.
- 18.) WELDING SYMBOLS FROM CODE OF PRACTICE FOR WELDING, S.A.B.S. 044 PART 2.
- 19.) WELDING TO CONFORM TO S.A.B.S. 044.
- 20.) ALL WELDS ON STANCHIONS TO BE DRESSED SMOOTH WITH A MAXIMUM REDUCTION OF THICKNESS 0,5mm AFTER DRESSING.
- 21.) WITH OTHER MANUFACTURING PROCESSES TO THE BALL, A REDUCTION ON THICKNESS OF NOT MORE THAN 0,5mm WILL BE ACCEPTED.
- 22.) THIS DRAWING MUST BE READ IN CONJUNCTION WITH RELEVANT SPECIFICATIONS.
ESKOM PARTICULAR SPECIFICATION No. 23.09 WILL APPLY. ALTERNATIVELY, S.A.B.S. 1200HA WILL APPLY WHERE THIS FORMS PART OF THE PROJECT SPECIFICATIONS.
- 23.) ALL STEELS OTHER THAN STATED BELOW, SHALL BE MILD STEEL AND CONFORM TO AT LEAST GRADE 43A.
COMMERCIAL GRADE STEELS WITH A GUARANTEED MINIMUM YIELD STRENGTH OF AT LEAST 220 MPa ARE RESTRICTED TO 1) HANDRAILS EXCLUDING STANCHIONS,
2) OPENGRID FLOORING.

NB. HANDRAIL STANCHIONS WHICH DEPART FROM THE REQUIREMENTS OF THIS DRAWING
MUST BE SUBMITTED FOR APPROVAL.

| | | | | | | | |
|---|-------------|---------------|---|--|---------------------------------------|---------------|--|
| 1 | 05 | 14.2.2018 | GATE DETAIL ADDED | | CJ | BH | |
| REV | AUTH MAG | DATE DATUM | REVISION/REVISES | | BY DELR | CHKD NAGES | REFERENCE DRAWINGS VERWYSINGS TEKENINGE |
| DRC TEK REGISTR | | | TRANSMISSION SUBSTATION TECHNOLOGY DEPARTMENT | | SUBSTATION . | | |
| CHKD NAGES | | |  ESKOM | | STANDARD STAIRS AND HANDRAIL DETAILS. | | |
| DRAWN GETEKEN  | | | APPROVED | | GOEDGEKEUR | | REV |
| SCALE SKAAL | | | N/S. | | 0.54/5578 | | 1 |