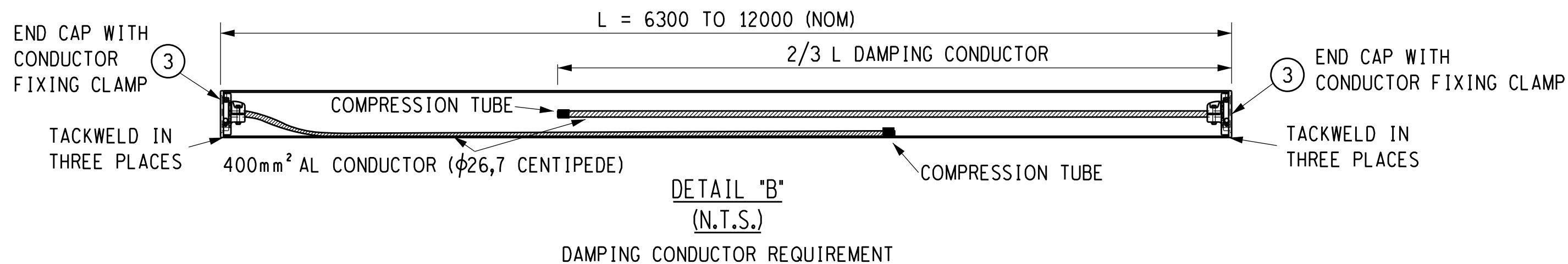
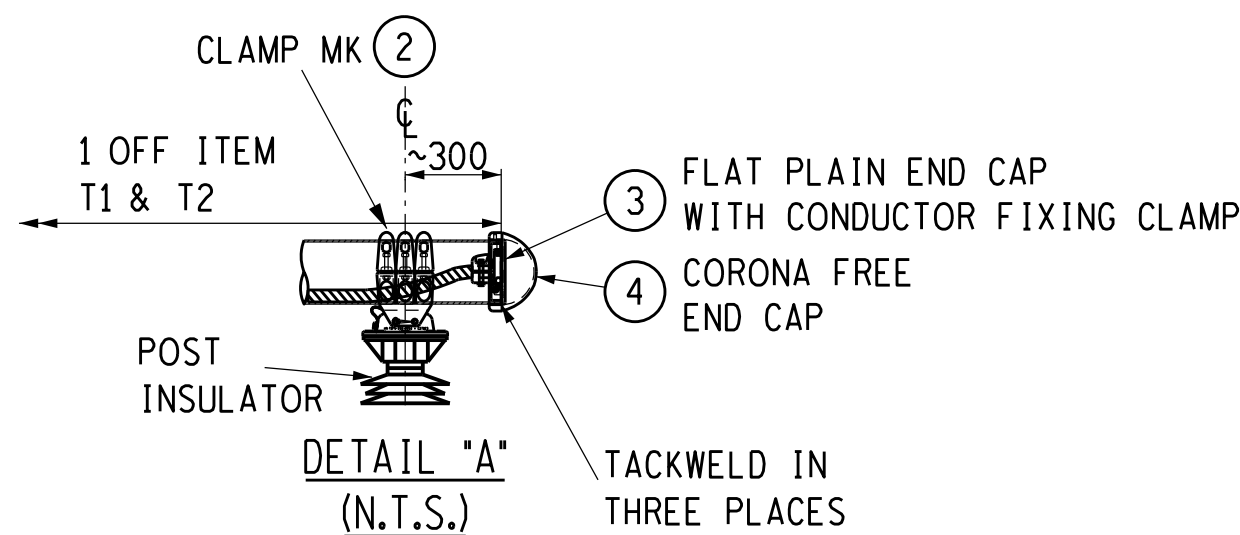
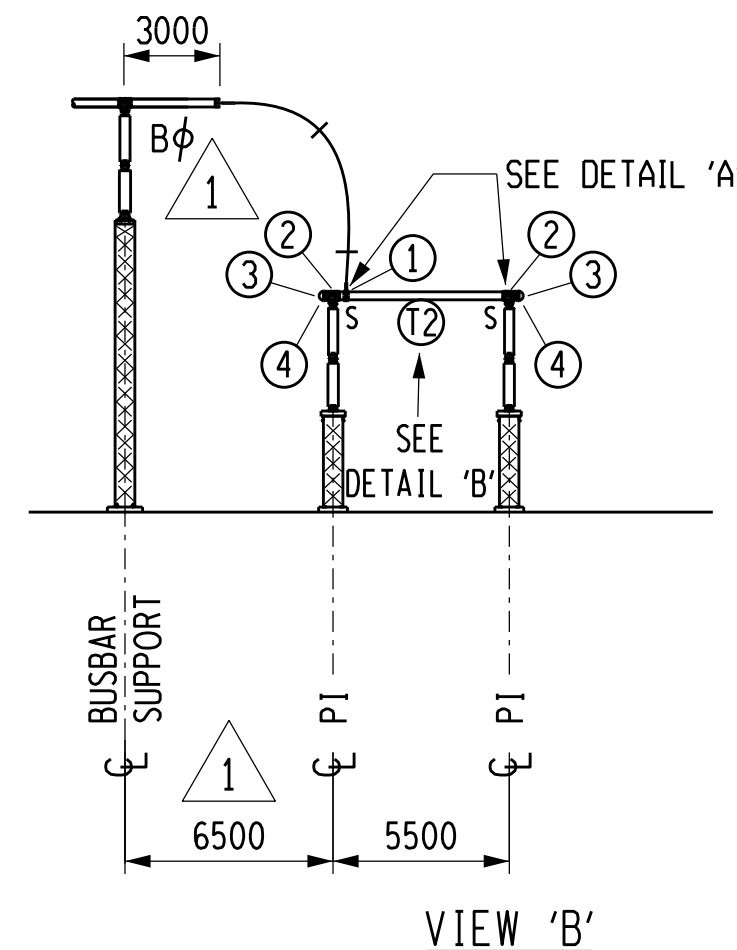
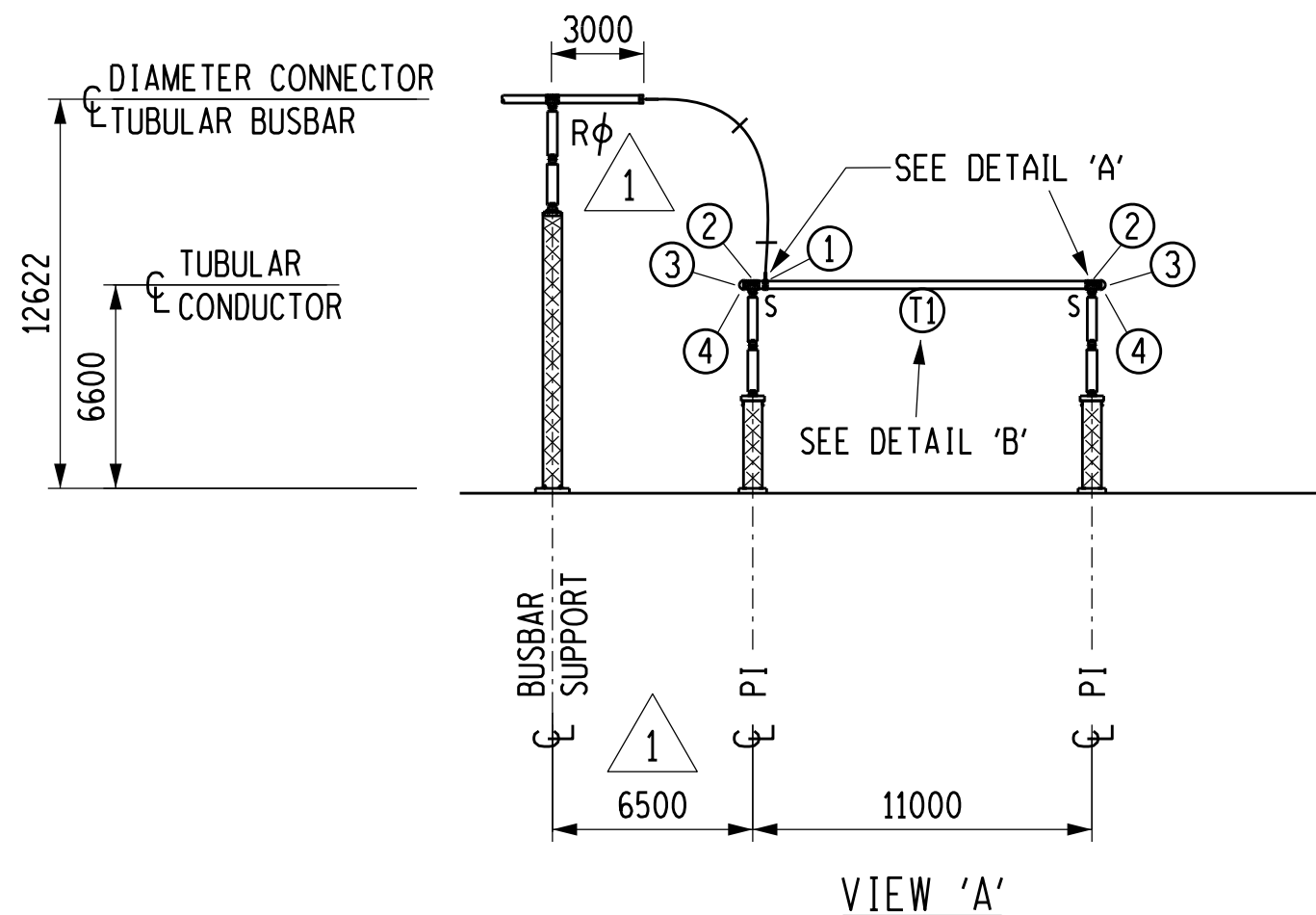


A  
B  
C  
D  
E  
F  
G  
H



**DETAILED DESIGN  
NOT FOR CONSTRUCTION**  
ORIGINAL DWG #: N/A  
CONCEPT DWG #: N/A

#### NOTES

1. ALL TUBES 250 DIA. x 6 WT ALUMINIUM AS PER SPECIFICATION.
2. TUBE LENGTHS GIVEN ARE NOMINAL BEFORE TRIMMING TO FINAL MEASURED REQUIREMENTS.

DAMPING CONDUCTOR SCHEDULE (SEE DETAIL 'A' & 'B')	
DESCRIPTION	QUANTITY
400mm <sup>2</sup> AAC - CENTIPEDE	24.4m
COMPRESSION TUBES (FERRULES)	4

SCHEDULE OF φ250 x 6WT AL TUBES			
ITEM No	LENGTH (mm)	QUANTITY	REMARKS
T1	12000	1	SEE NOTE 2
T2	6300	1	

SCHEDULE OF TUBULAR BUSBAR CLAMPS AND ACCESSORIES			
MK	DESCRIPTION	TYPE	QTY
1	φ 250 TUBE TO 2x800 mm <sup>2</sup> COMPRESSION CLAMP	ETP-IL-2-AF	2
2	φ 250 TUBE COUPLING CLAMP	ECC-PI-S-K	4
3	φ250 x 6WT TUBE CONDUCTOR CLAMP END CAP φ38,3 CONDUCTOR	ETEC-DC-H	2B 2R
4	φ250 x 6WT TUBE CORONA FREE END CAP	ETEC-CF-G	2B 2R

1	BAY SPACING AND PHASING CORRECTED	GT	ALG	MP	13/09/2023
0	FIRST ISSUE				27/01/2022
REV	REVISION DESCRIPTION	BY	CHKD	AUTH	DATE

**Eskom**

Eskom Holdings SOC Ltd  
Reg No 2002/015527/30

UPINGTON MTS  
400kV FDR 3 TO DIAMETER GC  
CONNECTOR 2 ARRANGEMENT

SHEET NUMBER		REVISION
4B		1

1  
1