

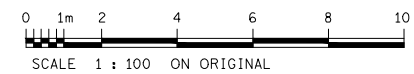
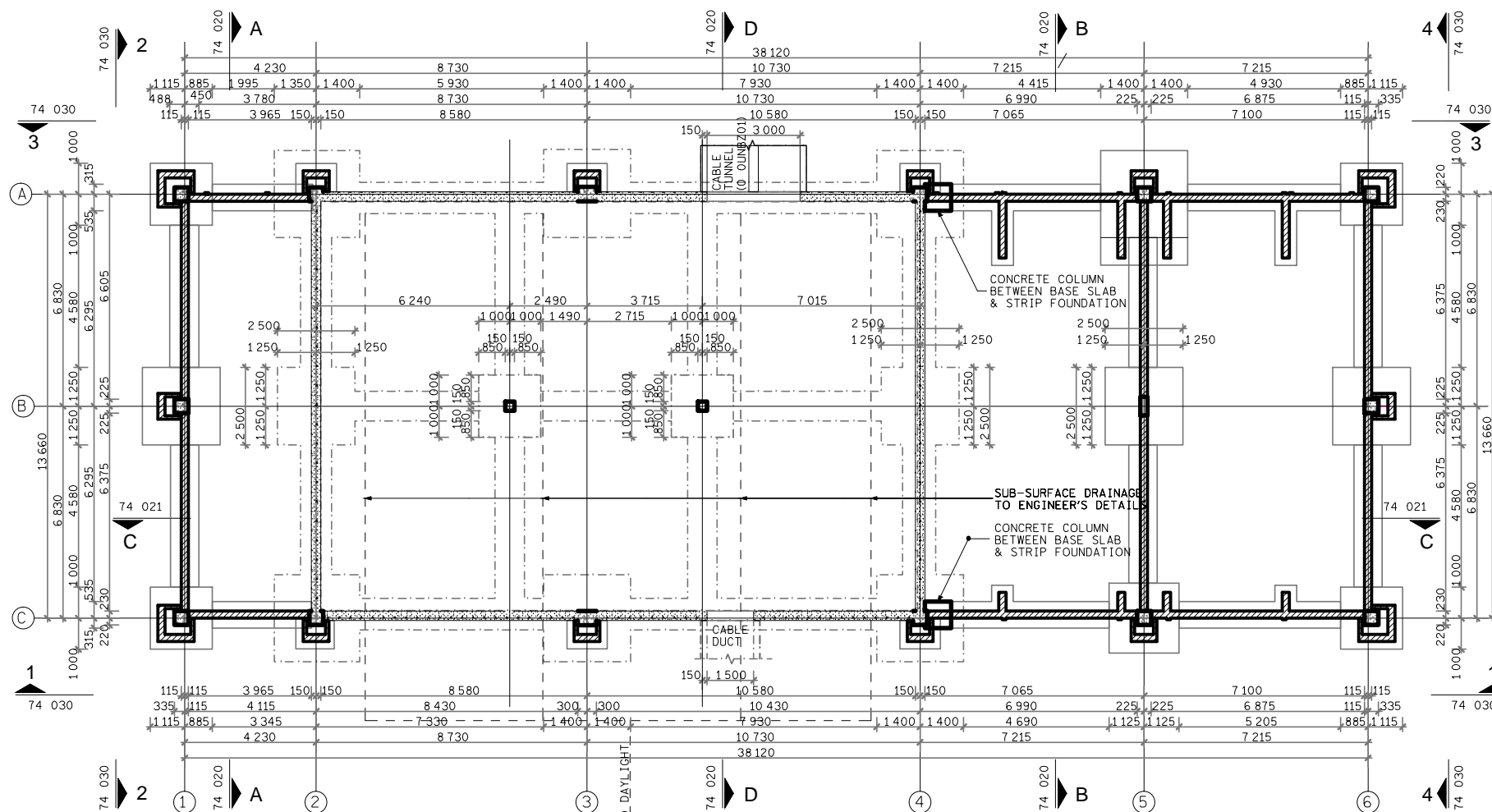
NOTE
ALL FIRE EXTINGUISHERS INSTALLED WITH THE CARRYING HANDLE NOT MORE THAN 1.5m ABOVE FLOOR-LEVEL.
ALL FIRE EXTINGUISHERS INSTALLED AT AN EQUAL HEIGHT.

NOTE
DOORS 12 AND 15 HAVE 3 LEVER MORTICE LOCKSETS. GENERATOR ROOM LOUVRE DOORS, HAVE BARREL BOLTS

Summary:

4 x Door status

2 x Security CCTV



INFRASTRUCTURE BUILDINGS

FOR REFERENCE DRAWINGS, REFER TO DRAWING 74 10a

KKS	AUTH BY	0 OUBN	SPF
BRAAMHOEK CONSULTANTS JOINT VENTURE			
ARCUS GIBB		SSI	
CONSULTING • DESIGN • MANAGEMENT		A DIV COMPANY	
Knight Piésold CONSULTING			
THE COPYRIGHT OF THIS DRAWING, INCLUDING THE DESIGN & DETAILS SHOWN HEREON, IS OWNED BY ESKOM HOLDINGS LTD. THIRD PARTIES SHALL NOT USE THIS DRAWING IN WHOLE OR IN PART WITHOUT THE WRITTEN PERMISSION OF ESKOM HOLDINGS LTD.			
2 20/04/12 FOR RECORD PURPOSES			
** REVISION **			
FOR REFERENCE DRAWINGS REFER TO NOTE ON DRAWING			
APPROVED BY :			
AUTHORISED BY :			
INGULA PUMPED STORAGE SCHEME			
EMERGENCY POWER BUILDING			
GENERAL ARRANGEMENT			
GROUND AND FOUNDATION			
ESKOM HOLDINGS LTD.		REG. No. 2002/015527/06	
Eskom		0.83/74 010	
SCALE 1:100		SHEET 1 2	