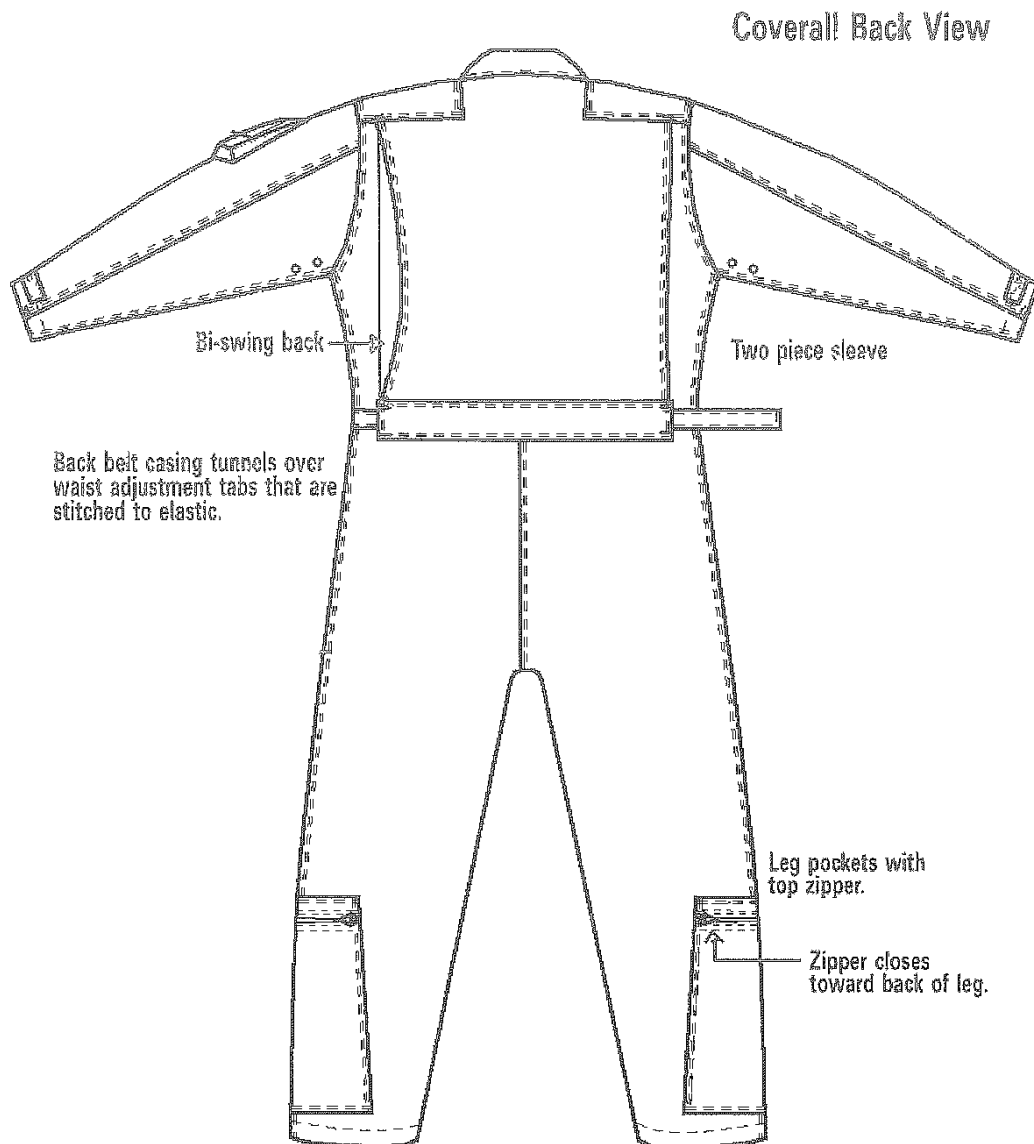


FLYING OVERALL DESIGN SPECIFICATIONS

- MATERIAL - Fire resistant Kermel, Nomex or equivalent.
- CONSTRUCTION – Double stitching throughout.
- DESIGN – As per attached diagram and custom fit to each pilot's measurements.
- POCKETS – Breast Pockets, Side Pockets and Lower Leg Pockets.
- COLOUR – Navy Blue.
- SHOULDER STRAPS/PASSENTEN – to be provided for attachment of Epaulettes.



Bottom edges of pockets are 3-3/4" above finished hems at side seams and approximately 4" above finished hems at front and back corners.

Coverall Front View

