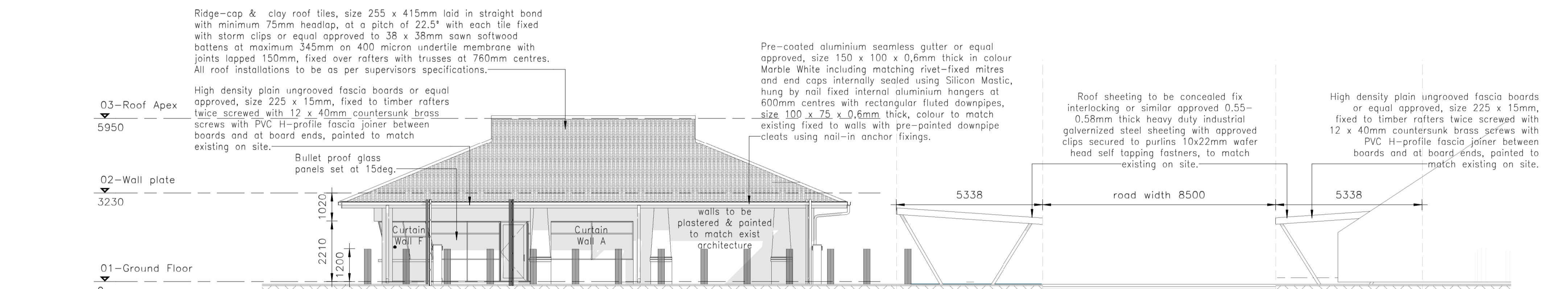
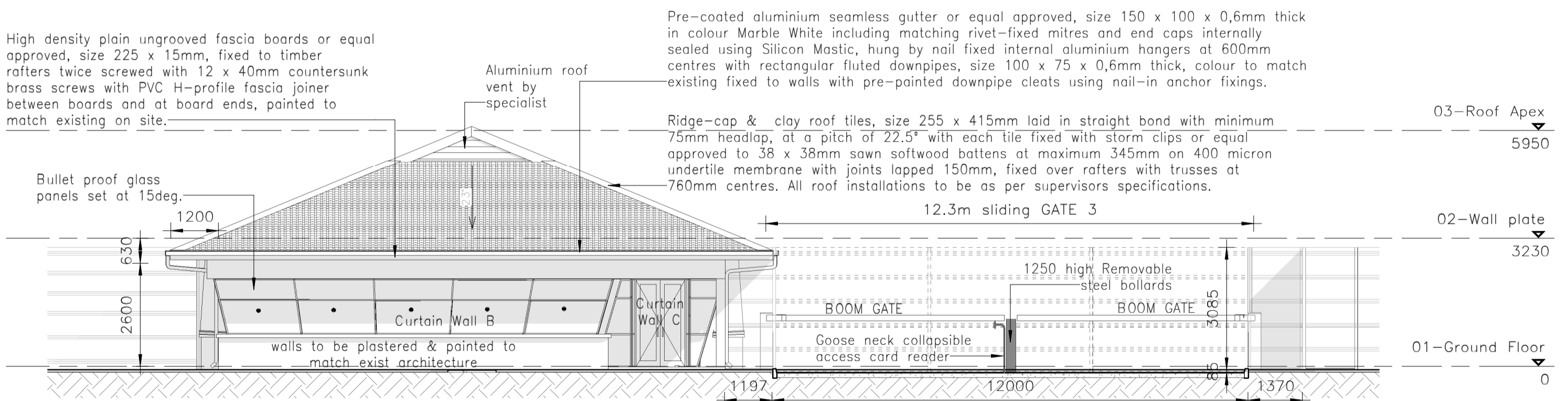


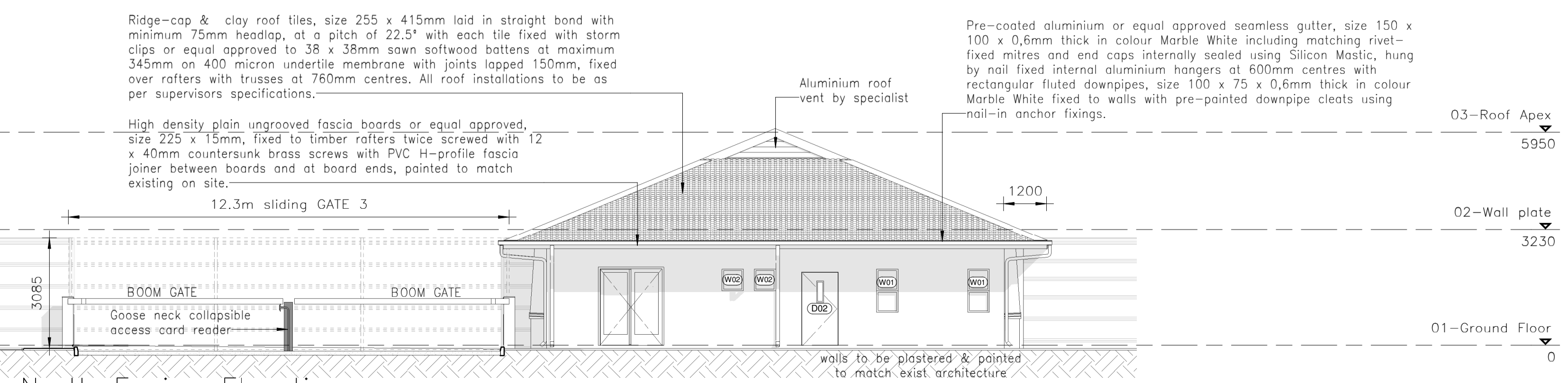
West Facing Elevation
1 : 100



East Facing Elevation
1 : 100



South Facing Elevation
1 : 100



North Facing Elevation
1 : 100

| | | |
|---|--------------|--|
| KKS | AUTH BY | SPF |
| BRAAMHOEK CONSULTANTS JOINT VENTURE | | |
| | | |
| <small>THE COPYRIGHT OF THIS DRAWING, INCLUDING THE DESIGN & DETAILS SHOWN HEREON, IS OWNED BY ESKOM HOLDINGS LTD. THIRD PARTIES SHALL NOT USE THIS DRAWING IN WHOLE OR IN PART WITHOUT THE WRITTEN PERMISSION OF ESKOM HOLDINGS LTD.</small> | | |
| REV | DATE | DESCRIPTION |
| 1d | 23.01.17 | 1. Gate 2 indicated. 2. Sections numbers indicated. 3. Elevations renamed. 4. Space fridge & water dispenser indicated. |
| 1c | 12.12.16 | 1. Issued for Re-Tender. 2. Pick up point indicated on layout. 3. All eaves are 1200mm for weather protection. 4. Brand names have been removed. 5. Gutters specified. |
| 1b | 14.11.16 | 1. Glazing details added. 2. Additional cupboards added. 3. Roof sheeting changed to clay tiles. 4. Visitor parking moved 12m away from the building. 5. Tiling layout added |
| To | 14.11.16 | ISSUED FOR TENDER |
| ** REVISION ** | | |
| DRG REGISTR | APPROVED BY: | FOR REFERENCE DRAWINGS REFER TO NOTE ON DRAWING |
| APP BY | M. Kruger | |
| AUTH BY | M. Kruger | |
| DESIGN BY | M. Kruger | |
| CHKD BY | S. Cronje | |
| DRAWN BY | M. Malebana | |
| SCALE | 1 : 100 | |
| | | NATIONAL KEY POINT FENCE & ACCESS ROAD Elevations |
| 0.83/79 | | 004 |
| SHEET 1 | | 1d |