

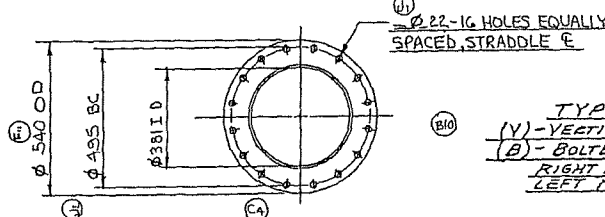
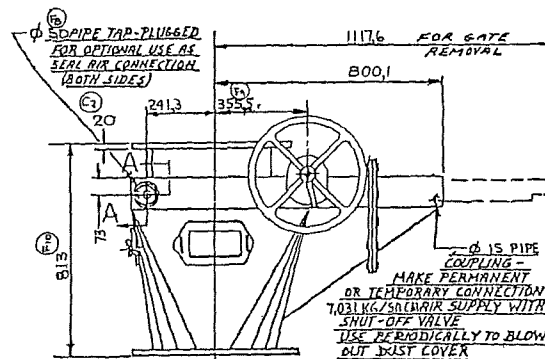
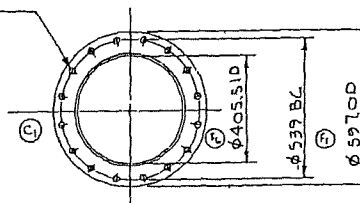
NOTE UNITS 2 THRU 6 TO HAVE
17.8 JOINT VALVE & SHOWN & NOTED
UNIT NO 1 VALVES TO HAVE MOTOR
OPERATOR SUPPLIED BY OTHERS

SPECIFICATIONS:	
QUANTITY VALVES REQ'D: RIGHT HAND	LEFT HAND 12
VALVE SIZE AND TYPE:	16-RR-VB-SP
POSITION INDICATOR - STD. 1 MECH. & ELECTRICAL	
WICED PER Y1352	
SPECIAL FEATURES: INLET SKIRT	3/8" MILD STEEL
BODY PLATES	3/8" MILD STEEL

(VALVE IS DESIGNED 3.514 KG/90 CM EXPLOSION PRESSURE. REQUIRES
MINIMUM 952 MM BODY PLATE CONSTRUCTION)

CUSTOMER:

Ø 26-16 HOLES EQUALLY
SPACED, STRADDLE &



TYPE VB
(V) - VERTICAL FLOW
(B) - BOLTED FLANGES
RIGHT HAND VALVE - SHOWN
LEFT HAND VALVE - OPERATOR ON OPPOSITE SIDE

