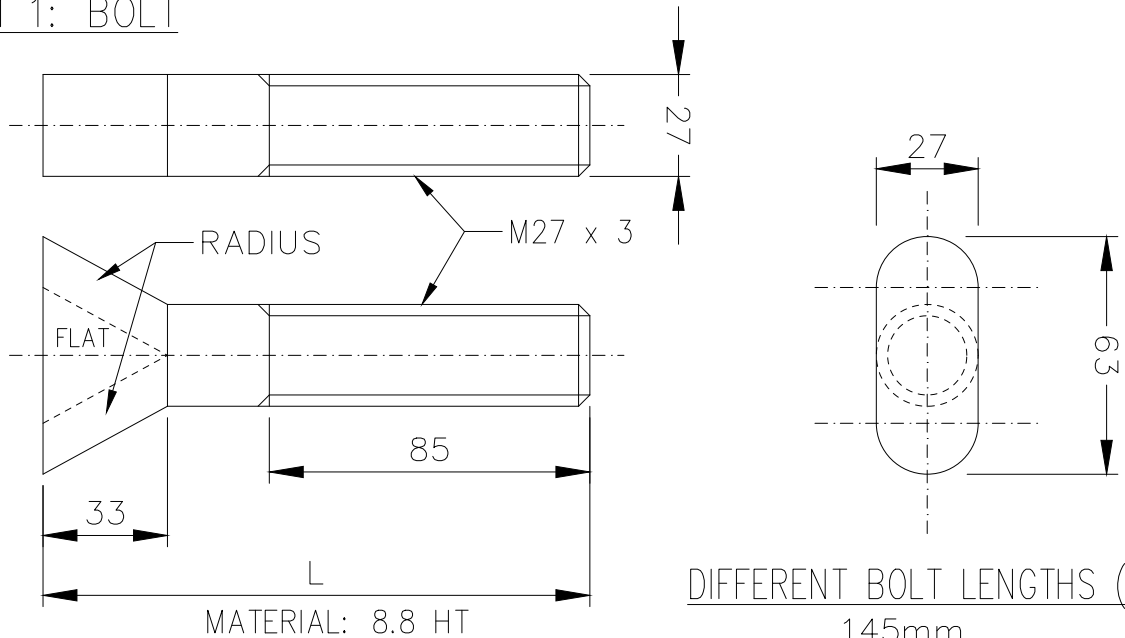


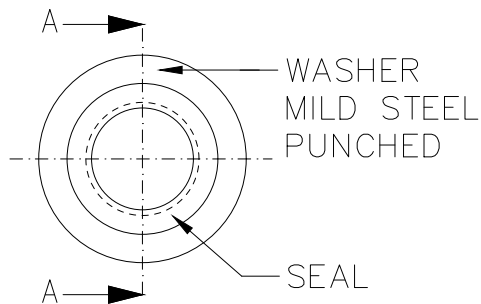
ITEM 1: BOLT



DIFFERENT BOLT LENGTHS (L):

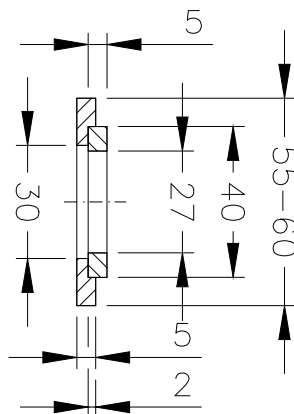
145mm
210mm
225mm
310mm

ITEM 2: WASHER



NOTE:

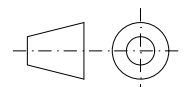
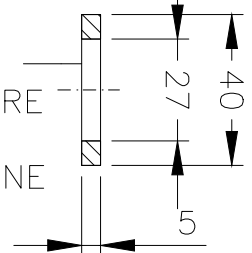
- 1.) WASHER TO BE FLAT
- 2.) RECESS TO BE MACHINED
- 3.) REMOVE ALL BURS



SECTION A-A

ITEM 3: SEAL

SEAL
70 SHORE
POLY
URETHANE



ITEM 4: M27 NYLOCK NUT

THIS DRAWING HAS BEEN CREATED ON A C.A.D. SYSTEM.
ANY AMENDMENT MUST BE EFFECTED ON THE SAME SYSTEM.

20	01	14 02 03	DIMENSIONS ON WASHER REVISED	R.V	R.A	T.G	B.M		
00	0		FIRST ISSUE						
D.O.	REV	DATE	** REVISION **	REV BY	CHKD BY	AUTH BY	KKS APP	0°	REFERENCE DRAWINGS
			INDEX REFERENCE :						
DRG REGISTR	01 06 01	M.M	APPROVED BY :	MATIMBA POWER STATION TUBE MILL LINER BOLT					
			W.H. PRETORIUS						
KKS APP	01 06 01	B.M	/ /						
AUTH BY	01 06 01	J.M v V	AUTHORISED						
CHKD BY	01 06 01	B.M							
DRAWN BY	01 06 01	T.W							
SCALE	N.T.S								



20.58/55894

REV

01

SIZE
GROOTTE

A4L