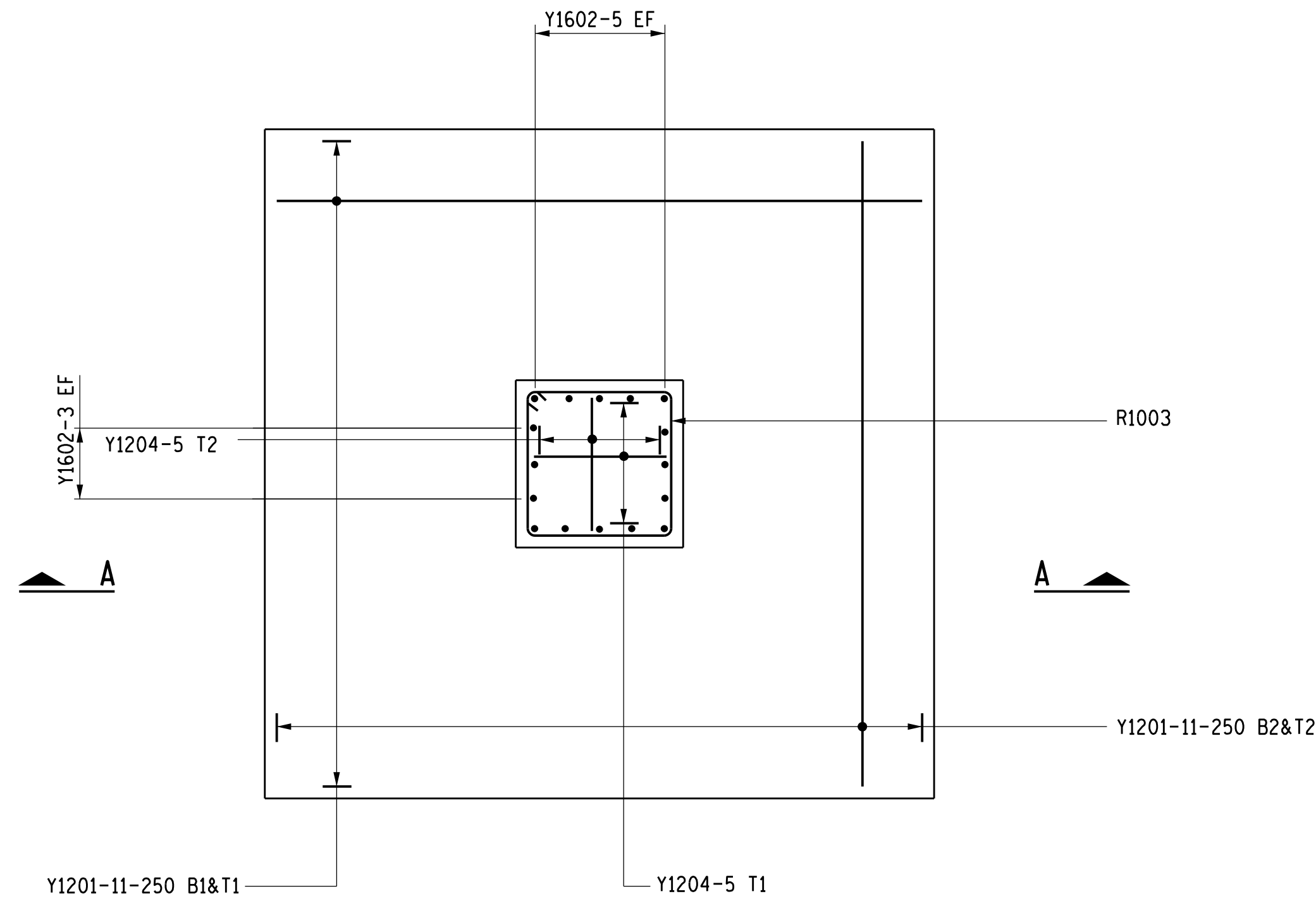
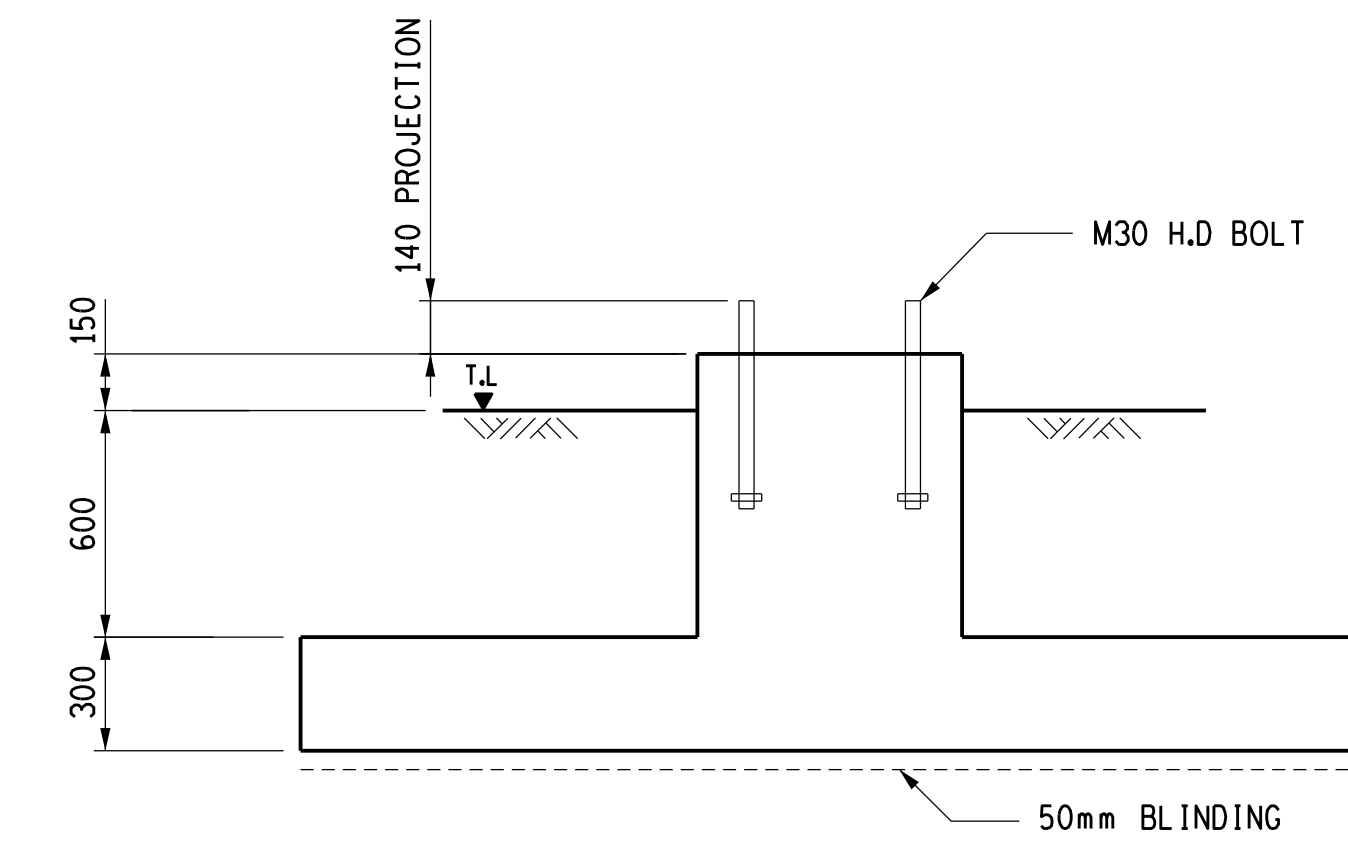


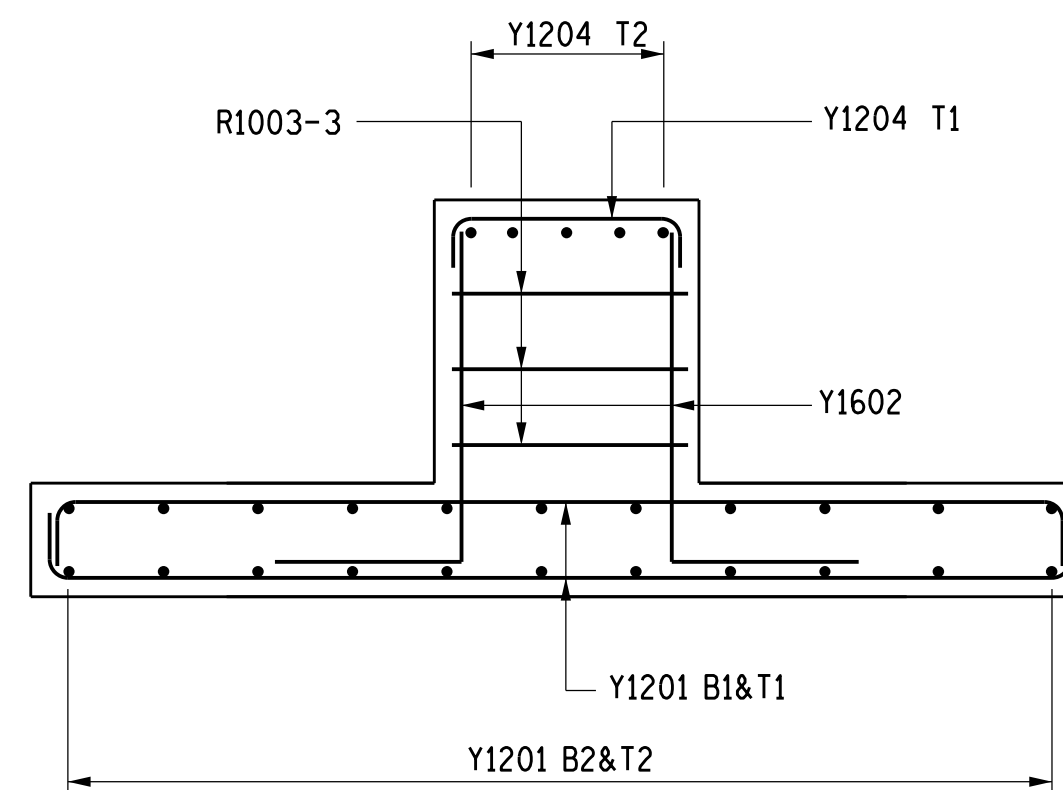
PLAN - CONCRETE



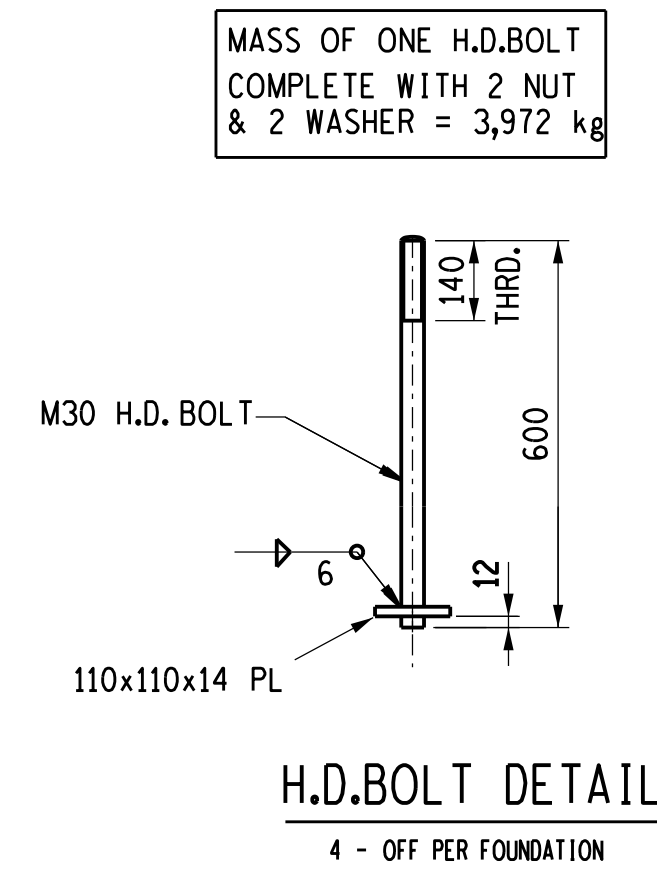
PLAN - REINFORCEMENT



TYPICAL SECTION



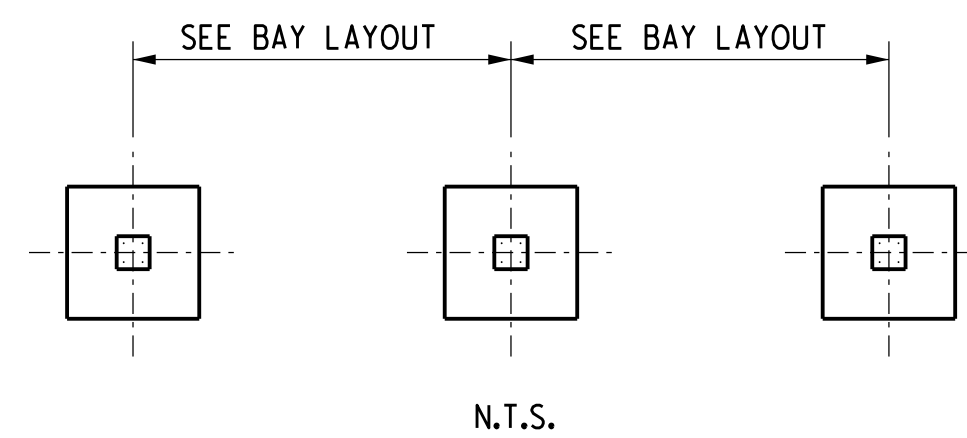
SECTION A-A




NOTES:

1. CONCRETE STRENGTH AT 28 DAYS/STONE SIZE:BLINDING = 15/19 FOUNDATIONS = 25/19.
2. MIN.CONCRETE COVER TO REINFORCEMENT = 50 mm.
3. a.) H.D.BOLTS SUPPLIED BY CIVIL CONTRACTOR COMPLETE WITH NUTS AND WASHERS TO BE HOT DIPPED GALVANISED TO SANS 121.  
b.) THREADS OF NUTS TO BE OVER-CUT TO SANS 121 TO ALLOW FOR THICKNESS OF GALVANISING.
4. FORMWORK TO EXTEND AT LEAST 150mm BELOW GROUND LEVEL.
5. ALL WELDING AND WELDING SYMBOLS TO SANS 10044.
6. STEEL TEMPLATE TO BE USED FOR SETTING HD BOLTS.
7. 30MPa FLOWABLE NON-SHRINK GROUT UNDER BASE PLATE ONLY IF REQUIRED.
8. ALL TOP EDGES OF CONCRETE TO HAVE 20x20 CHAMFERS.
9. ALL WORK TO BE IN ACCORDANCE WITH SANS 1200 SERIES SPECIFICATION.
10. CONCRETE FINISH : TOP OF FOUNDATION - WOOD FLOAT FINISH  
: SIDES - SMOOTH OFF SHUTTER FINISH.

ITEM AND No OFF						BARS			SHAPE CODE	STANDARD SHAPES BENDING DIMENSIONS mm					
	Y o f R	DIA.	MK.	No PER ITEM	OFF	CUTTING LENGTH mm	TOTAL LENGTH m	A		B	C	D	E	R	
					TOTAL										
TOTALS FOR	Y	12	01		44	3000		38	170	2700					
ONE FOUNDATION	Y	16	02		16	1300		37	400						
	R	10	03		3	2650		60	600	600					
	Y	12	04		10	850		35	580						



0	FIRST ISSUE					6433	SHT.2-PAD(2,5x2,5)
REV	REVISION DESCRIPTION	BY	CHKD	AUTH	DATE	0.54/	REFERENCE DRAWINGS
APPROVED BY	 Eskom Transmission				ESKOM HOLDINGS LIMITED REG NO. 2002/015527/06		
D.J.SENEKAL							
DATE	26/10/2010						
CHECKED BY	400 kV  ABB CIRCUIT BREAKER (50kA RATING) TYPE HPL 420B2 & LTB 420E2 CIRCUIT BREAKER FOUNDATION (PAD 2,8x2,8)						
J.NTOLA							
DATE					26/10/2010		
DRAWN BY					© S.MDLALANE		
0.54/7868							
DATE	13/10/2010	SHEET NUMBER			REVISION		
SCALE	1:20				0		