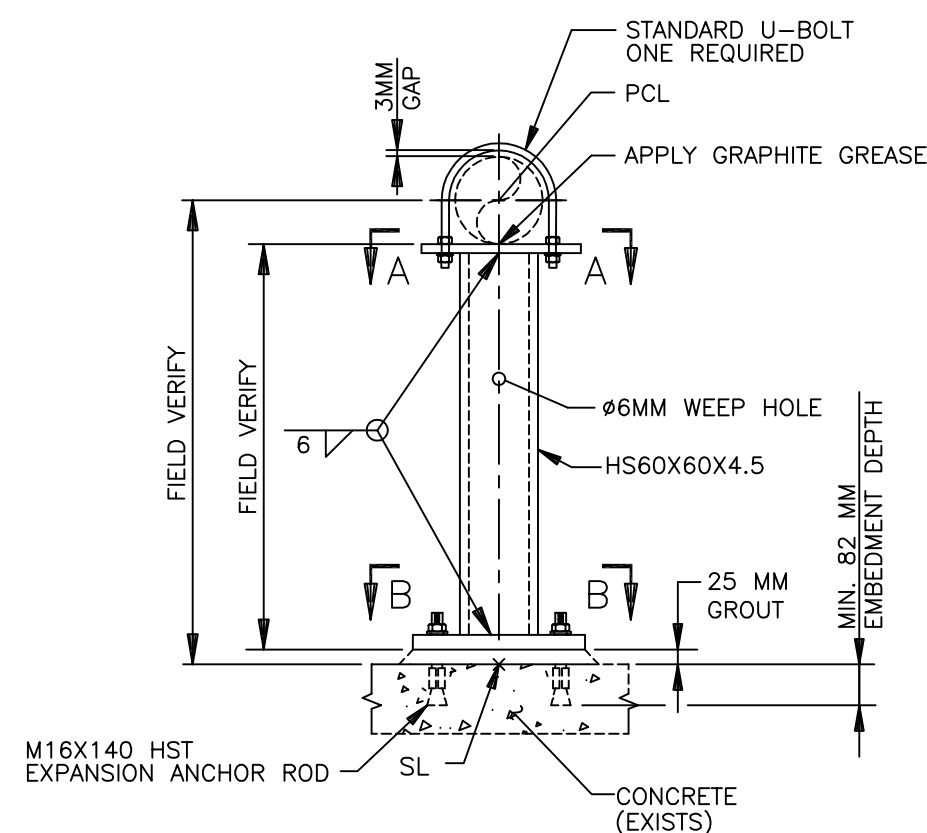


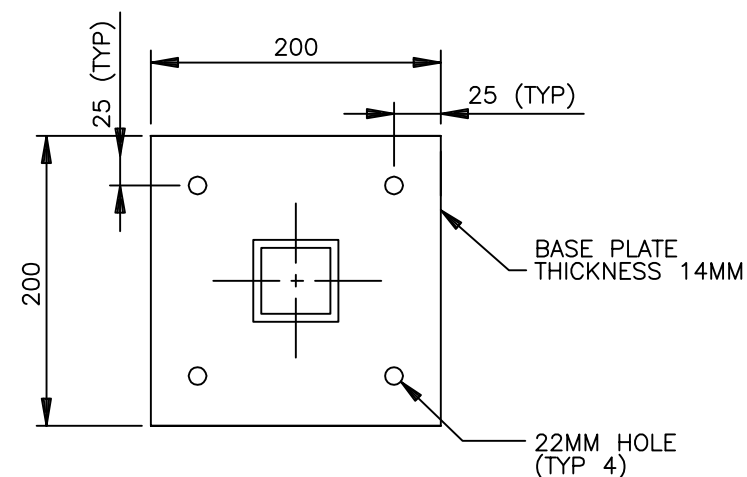
VIEW A-A



ELEVATION VIEW

00GME10BQ578

00GME10BQ579



VIEW B-B

ENGINEERING DESIGN					CLEANING AND COATING			INSULATION			DESIGN INFORMATION			
PIPELINE CODE	ASME DESIGN CODE	FLUID	DESIGN TEMP	DESIGN PRESS	INTERIOR CLEANING	INTERIOR COATING	EXTERIOR PAINTING	PIPELINE CODE	PIPE SIZE	TOTAL THK	TEST PRESSURE AND LT METHOD	WELD CODE	CORROSION ALLOWANCE	
OOGME10BR033	B31. 1	WATER	42 C	10 BAR	CPS100	CPS100	CPS100	OOGME10BR032	50	25. 4	15 BAR	H	MM	
OOGME10BR034	B31. 1	WATER	42 C	10 BAR	CPS100	CPS100	CPS100	OOGME10BR034	50	25. 4	15 BAR	H	MM	
DATABASE DWG NO: OGME-M4646UG		MODEL VOLUME: RSVR				P&ID REFERENCE								
DWG EXTRACTION DATE: 10-JUN-22		INSTALL : LATER				FIRST: OGME-M2646W								
						THRU LAST: OGME-M2646W								

OPEN

**APPROVED FOR
CONSTRUCTION**
THE DISTRIBUTION AND USE OF THE
NATIVE FORMAT CAD FILE OF THIS
DRAWING IS UNCONTROLLED. THE USER
SHALL VERIFY TRACEABILITY OF THIS
DRAWING TO THE LATEST CONTROLLED
VERSION.

FIELD MATERIAL				
PT NO	DESCRIPTION	SPEC	QTY	
<u>PIPE</u>				
1	50 3.9, SANS 62-1	LATER	1	8
<u>FITTINGS</u>				
2	50 x 50, THRD TEE B1, ISO 49	LATER	1	
3	50, THRD 90 ELB A1, ISO 49	LATER	2	
4	50 CL 1000KPA, EXPANSION JOINT, OOGME10AS001	LATER	1	
5	50 CL 1000KPA, EXPANSION JOINT, OOGME10AS003	LATER	1	
<u>FLANGES</u>				
6	50 - 1000KPA/4 FF FLG SANS 1123	LATER	2	
<u>NUTS AND BOLTS</u>				
7	16 X 76 STUD ISO 4018 - 4.6 - A2J	LATER	8	
8	16 HEAVY HEX NUT ISO 4034 - 5 - A2J	LATER	16	
9	16 WASHER ISO 7091 - 100HV - A2J	LATER	16	
<u>VALVES / IN-LINE ITEMS</u>				
10	50 PN10, SCRD, 304SS, THRD BALL VALVE, OOGME10AA521	LATER	1	
11	50 PN10, SCRD, 304SS, THRD BALL VALVE, OOGME10AA519	LATER	1	

[illegible]

					</														