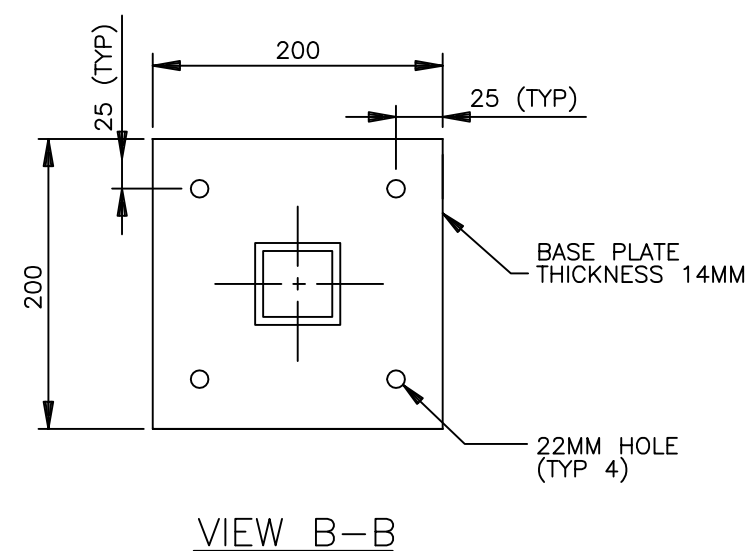
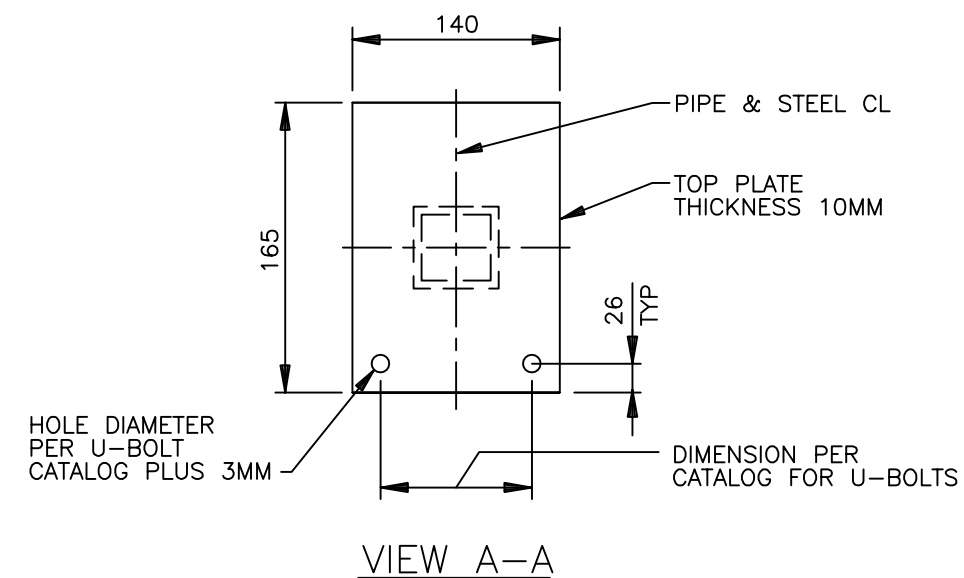
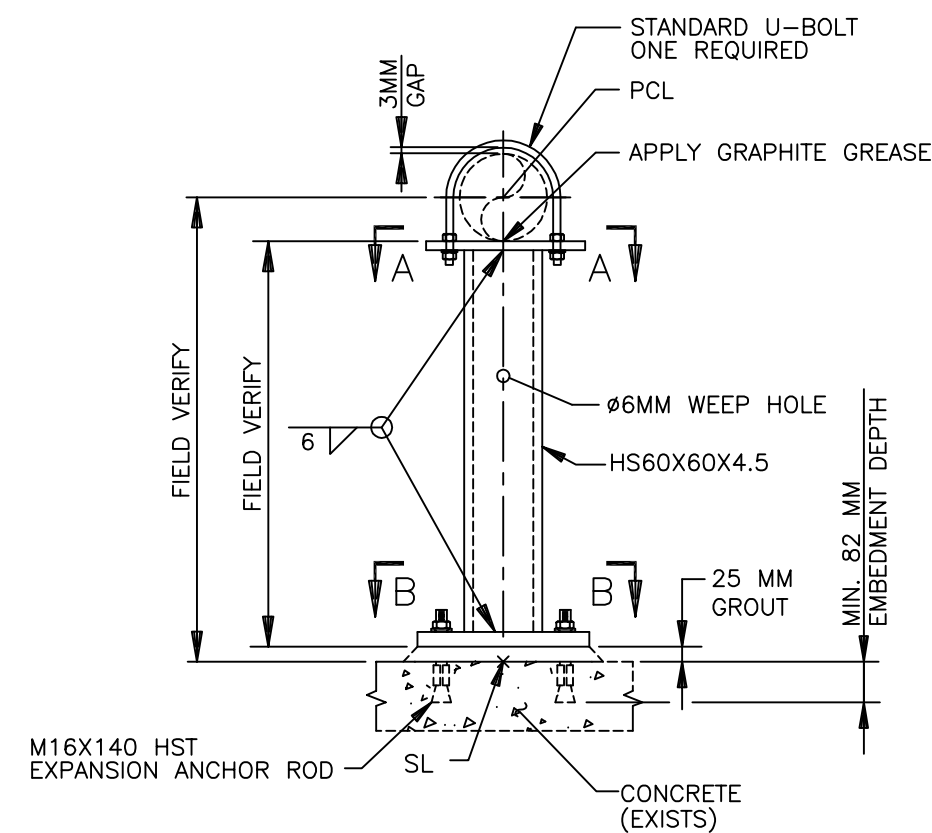


FIELD MATERIAL				
PT NO	DESCRIPTION	SPEC	QTY	
<u>PIPE</u>				
1	50 3.9, SANS 62-1	LATER	1.732	M
2	25 3.5, SANS 62-1	LATER	0.075	M
<u>FITTINGS</u>				
3	50 x 50, THRD TEE B1, ISO 49	LATER	1	
4	50 x 25, THRD HEX BUSH N4, ISO 49	LATER	1	
5	50, THRD 90 ELB A1, ISO 49	LATER	3	
<u>FLANGES</u>				
6	50 - 1000KPA/4 FF FLG SANS 1123	LATER	1	
<u>NUTS AND BOLTS</u>				
7	16 X 100 STUD ISO 4018 - 4.6 - A2J	LATER	4	
8	16 HEAVY HEX NUT ISO 4034 - 5 - A2J	LATER	8	
9	16 WASHER ISO 7091 - 100HV - A2J	LATER	8	
<u>VALVES / IN-LINE ITEMS</u>				
10	25 PN10, SCRDR, 304SS, THRD BALL VALVE, OOGME10AA303	LATER	1	



ELEVATION VIEW

00GME10BQ577

ENGINEERING DESIGN					CLEANING AND COATING			INSULATION			DESIGN INFORMATION		
PIPELINE CODE	ASME DESIGN CODE	FLUID	DESIGN TEMP	DESIGN PRESS	INTERIOR CLEANING	INTERIOR COATING	EXTERIOR PAINTING	PIPELINE CODE	PIPE SIZE	TOTAL THK	TEST PRESSURE AND LT METHOD	WELD CODE	CORROSION ALLOWANCE
OOGME10BR033	B31. 1	WATER	42 C	10 BAR	CPS100	CPS100	CPS100	OOGME10BR033	50	25. 4	15 BAR	H	MM
OOGME10BR303	B31. 1	WATER	42 C	10 BAR	CPS100	CPS100	CPS100	OOGME10BR303	25	25. 4	15 BAR	H	MM
DATABASE DWG NO: OGME-M4646UE		MODEL VOLUME: RSVR				P&ID REFERENCE							
DWG EXTRACTION DATE: 10-JUN-22		INSTALL : LATER				FIRST: OGME-M2646W THRU LAST: OGME-M2646W							

OPEN

**APPROVED FOR
CONSTRUCTION**
THE DISTRIBUTION AND USE OF THE
NATIVE FORMAT CAD FILE OF THIS
DRAWING IS UNCONTROLLED. THE USER
SHALL VERIFY TRACEABILITY OF THIS
DRAWING TO THE LATEST CONTROLLED
VERSION.

[illegible][illegible]