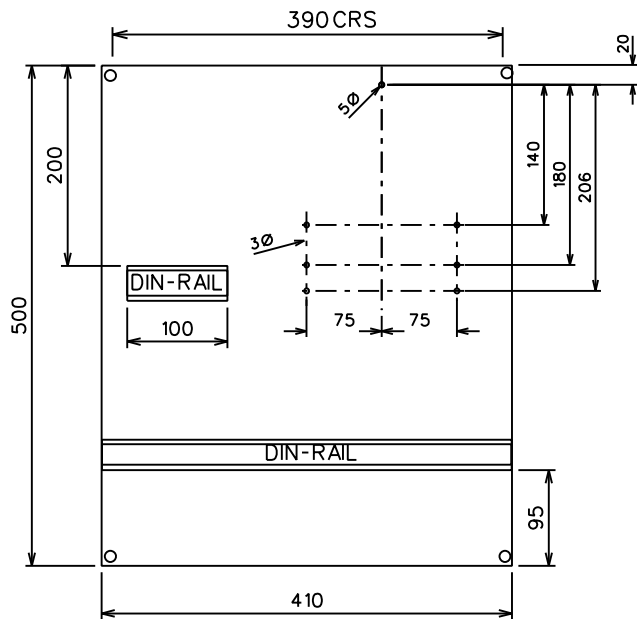


- 
- Technical drawing of a bracket showing isometric, top, and front views with dimensions:
- Isometric View:** Shows a bracket with a horizontal base and a vertical support. A "SLOTTED HOLE" is indicated on the vertical support.
  - Top View:** Shows the bracket's footprint with a total width of 100.
  - Front View:** Shows the bracket's profile with dimensions: a base width of 25, a base height of 10, a vertical support width of 40, and a total height of 50.
- DETAILS OF FIXING BRACKET

HINGE: 20mm LONG x 8mm DIAMETER STUD  
& WASHER WELDED ONTO FRAME FOR  
THE FITMENT OF THE DOOR

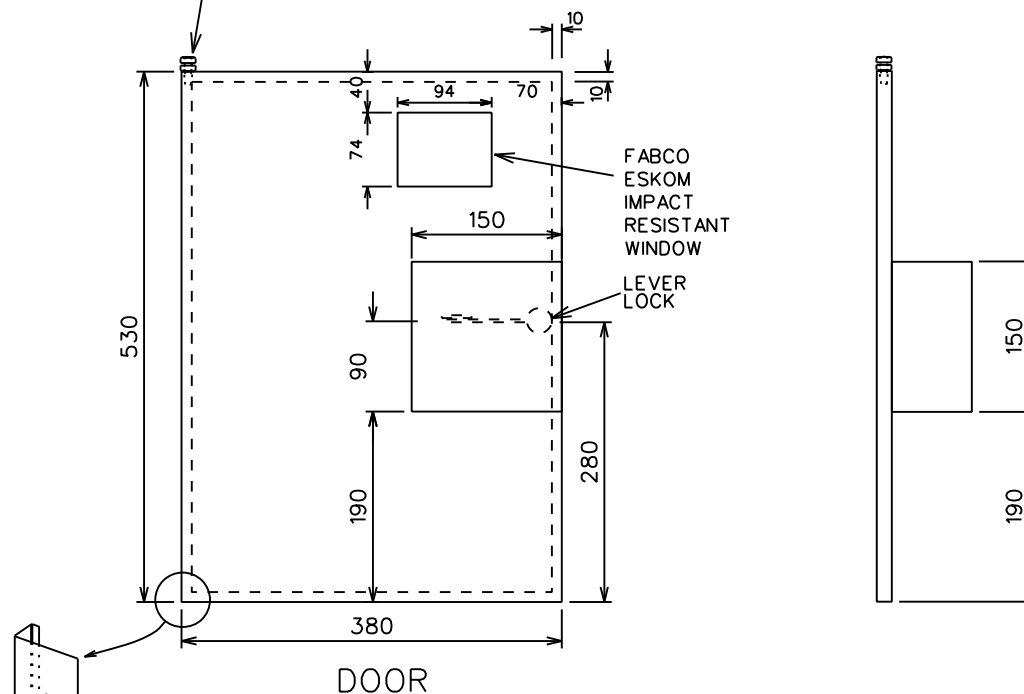


## INNER PLATE

### NOTES:

1. THE INNER PLATE SHALL BE USED FOR THE FITMENT OF THE EQUIPMENT.
2. THE DIN-RAIL SHALL BE FITTED BY STAINLESS STEEL BOLTS, NUTS AND SPRING WASHERS, SCREWS AND SPRING WASHERS, RIVETS OR SPOT WELDED.
3. STAINLESS STEEL OR BRASS SELF CLINCHING NUTS OR RIVET NUTS WITH A M4 OR M5 THREAD SIZE SHALL BE INSTALLED ON ALL THE HOLES USED FOR THE FITMENT OF THE METER.
4. THREE 20mm M4/M5 STAINLESS STEEL SET SCREWS SHALL BE INSTALLED INTO THREE OF THE SELF CLINCHING NUTS OR RIVET NUTS.
5. THE INNER PLATE SHALL BE FITTED BY 4 STAINLESS STEEL SET SCREWS OR STUDS AND NUTS TO THE BACK OF THE KIOSK. THE SET SCREWS OR STUDS SHALL BE WELDED TO THE BACK OF THE KIOSK.

HINGE  
(20mm M8 STAINLESS STEEL SET SCREW & NUT  
- NUT IS WELDED ONTO TOP OF KIOSK DOOR SILL)



### NOTES:

1. A 3 WAY LEVER LOCK SHALL BE FITTED HORIZONTALLY ON THE DOOR. ALL PARTS THEREOF SHALL BE OF STAINLESS STEEL.
2. A PROTECTIVE BOX SHALL BE FITTED OVER THE LEVER LOCK. THE BOX SHALL BE OPEN ON THE BOTTOM. THE BOX SHALL HAVE 5 x 20mm SLOTTED HOLES OVER THE ENTIRE SURFACE AREA (TOP AND SIDES) SPACED NOT MORE THAN 10mm APART.
3. A STURDY DOOR STAY OF NON-FERROUS METAL SHALL BE FITTED TO THE DOOR.
4. FOUR 5mm WATER DRAIN HOLES SHALL BE DRILLED INTO THE BOTTOM OF THE DOOR SILL.
5. THE WINDOW ON THE DOOR SHALL BE A FABCO ESKOM WINDOW AND SHALL BE SECURED BY MEANS OF STAINLESS STEEL RIVETS AND SILICONE SEALER.
5. A STANDARD DANGER SIGN (SANS 1186) SHALL BE FITTED ON THE FRONT OF THE DOOR.

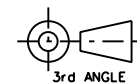
REV	REVISION DESCRIPTION	BY	CHKD	AUTH	DATE	PROJECT NO.
10	ADDED SURGE ARRESTORS AND FUSE HOLDERS	HPD G	HPD GROENEHALD		02/10/2018	
9	CHANGED DIMENSIONS, ADDED PROTECTIVE BOX, REMOVED SOLIDVA OPTION	HPD G	HPD GROENEHALD		20/06/2014	
8	CHANGED DOOR DESIGN, ADDED ACCEPTED PRODUCTS	HPD G	HPD GROENEHALD		09/02/2010	
7	VARIOUS AMENDMENTS DONE TO LAYOUTS	HPD G	HPD GROENEHALD		01/03/2007	
6	HEIGHT INCREASED, WINDOW CHANGED, METER HOLES MOVED	HPD G	HPD GROENEHALD		10/02/2006	
5	COMPLETE DESIGN CHANGE, INCORPORATING A THREE PHASE ELECTRONIC/ANALOG METER	HPD G	G H	PR G	28/01/2004	
4	COPPER BUSBARS TIMED, DOCUMENT BOX ADDED	HPD G	T G	PR G	25/02/2003	
3						
2						
1						

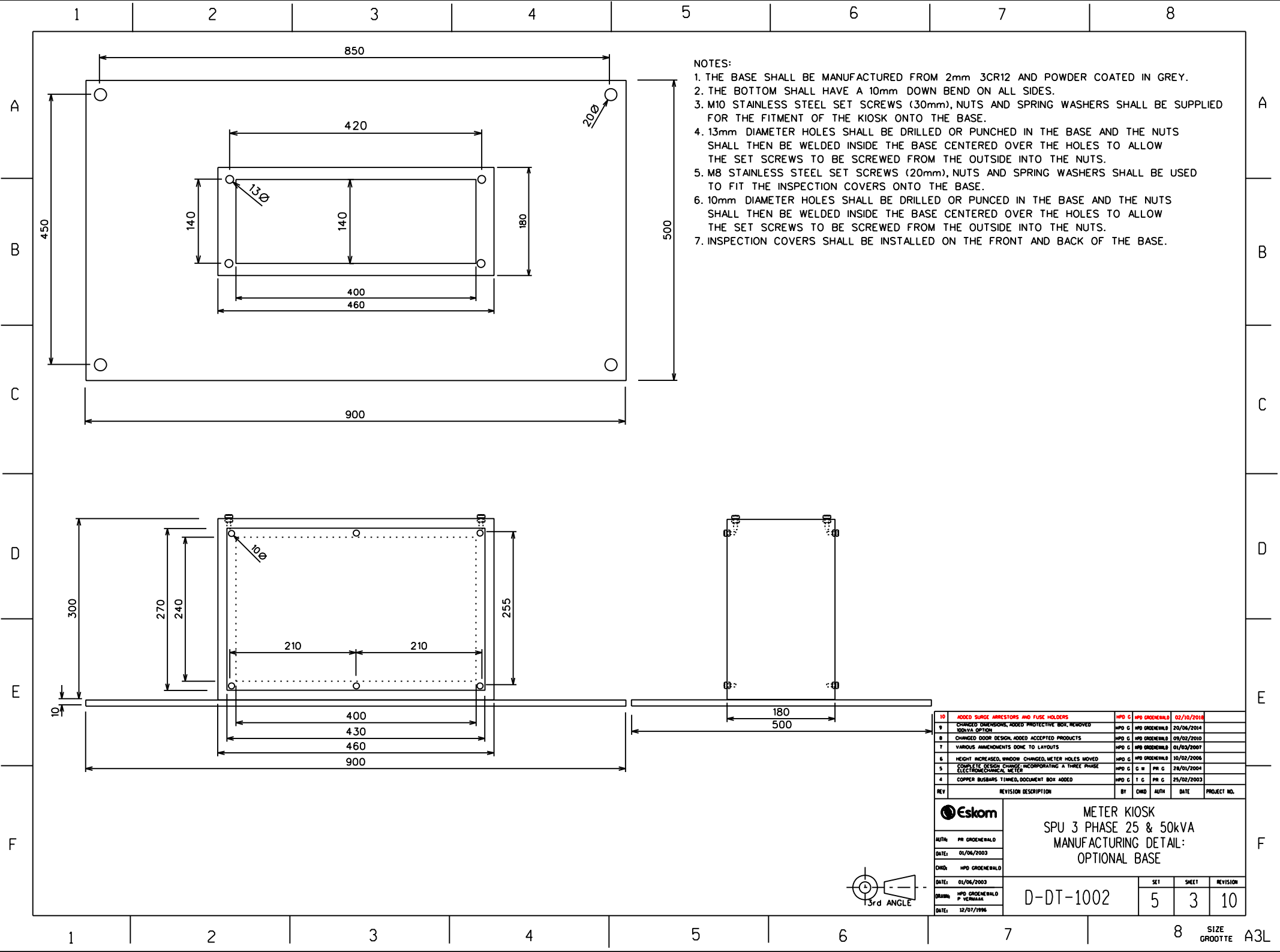


METER KIOSK  
SPU 3 PHASE 25 & 50kVA  
MANUFACTURING DETAIL:  
INNER PLATE AND DOOR

D-DT-1002

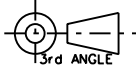
SET	SHEET	REVISION
5	2	10

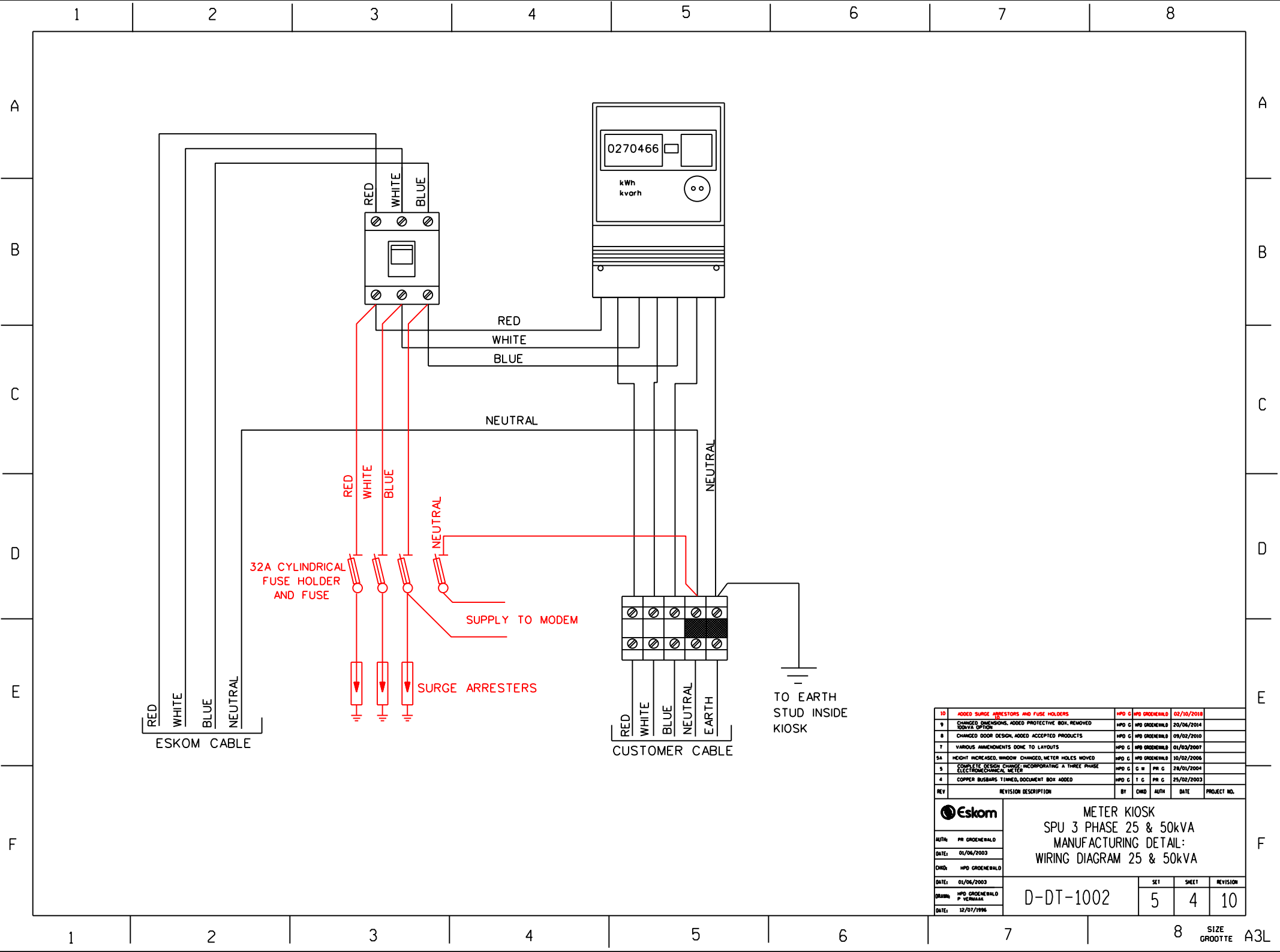





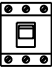

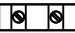

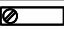


- NOTES:
1. THE BASE SHALL BE MANUFACTURED FROM 2mm 3CR12 AND POWDER COATED IN GREY.
  2. THE BOTTOM SHALL HAVE A 10mm DOWN BEND ON ALL SIDES.
  3. M10 STAINLESS STEEL SET SCREWS (30mm), NUTS AND SPRING WASHERS SHALL BE SUPPLIED FOR THE FITMENT OF THE KIOSK ONTO THE BASE.
  4. 13mm DIAMETER HOLES SHALL BE DRILLED OR PUNCHED IN THE BASE AND THE NUTS SHALL THEN BE WELDED INSIDE THE BASE CENTERED OVER THE HOLES TO ALLOW THE SET SCREWS TO BE SCREWED FROM THE OUTSIDE INTO THE NUTS.
  5. M8 STAINLESS STEEL SET SCREWS (20mm), NUTS AND SPRING WASHERS SHALL BE USED TO FIT THE INSPECTION COVERS ONTO THE BASE.
  6. 10mm DIAMETER HOLES SHALL BE DRILLED OR PUNCHED IN THE BASE AND THE NUTS SHALL THEN BE WELDED INSIDE THE BASE CENTERED OVER THE HOLES TO ALLOW THE SET SCREWS TO BE SCREWED FROM THE OUTSIDE INTO THE NUTS.
  7. INSPECTION COVERS SHALL BE INSTALLED ON THE FRONT AND BACK OF THE BASE.

10	ADDED SURGE ARRESTORS AND FUSE HOLDERS	HPD G	HPD GROENEHALD	02/10/2018	
9	CHANGED DIMENSIONS, ADDED PROTECTIVE BOX, REMOVED 100VIA OPTION	HPD G	HPD GROENEHALD	20/06/2014	
8	CHANGED DOOR DESIGN, ADDED ACCEPTED PRODUCTS	HPD G	HPD GROENEHALD	09/02/2010	
7	VARIOUS AMENDMENTS DONE TO LAYOUTS	HPD G	HPD GROENEHALD	01/02/2007	
6	HEIGHT INCREASED, WINDOW CHANGED, METER HOLES MOVED	HPD G	HPD GROENEHALD	10/02/2006	
5	COMPLETE DESIGN CHANGE, INCORPORATING A THREE PHASE ELECTRONIC/MICROWAVE METER	HPD G	G H PR G	28/01/2004	
4	COPPER BUSBARS TIMED, DOCUMENT BOX ADDED	HPD G	T G PR G	25/02/2003	
REV	REVISION DESCRIPTION	BY	CHKD	AUTH	DATE
PROJECT NO.					
Eskom					
METER KIOSK					
SPU 3 PHASE 25 & 50kVA					
MANUFACTURING DETAIL:					
OPTIONAL BASE					
AUTH: PR GROENEHALD	D-DT-1002		SET	SHEET	REVISION
DATE: 01/06/2003			5	3	10
CHKD: HPD GROENEHALD					
DATE: 01/06/2003					
DRAWN: HPD GROENEHALD					
P. VERMAAS					
DATE: 12/07/1996					






10	ADDED SURGE ARRESTERS AND FUSE HOLDERS	HPD G	HPD GROENEHALD	02/10/2018	
9	CHANGED DIMENSIONS, ADDED PROTECTIVE BOX, REMOVED 100kVA OPTION	HPD G	HPD GROENEHALD	20/06/2014	
8	CHANGED DOOR DESIGN, ADDED ACCEPTED PRODUCTS	HPD G	HPD GROENEHALD	09/02/2010	
7	VARIOUS AMENDMENTS DONE TO LAYOUTS	HPD G	HPD GROENEHALD	01/02/2007	
6A	HEIGHT INCREASED, WINDOW CHANGED, METER HOLES MOVED	HPD G	HPD GROENEHALD	10/02/2006	
5	COMPLETE DESIGN CHANGE, INCORPORATING A THREE PHASE ELECTRONIC/CUMULATIVE METER	HPD G	G H PR G	28/01/2004	
4	COPPER BUSBARS TIMED, DOCUMENT BOX ADDED	HPD G	T G PR G	25/02/2003	
REV	REVISION DESCRIPTION	BY	CHKD	AUTH	DATE
PROJECT NO.					
Eskom					
AUTH	PR GROENEHALD	METER KIOSK SPU 3 PHASE 25 & 50kVA MANUFACTURING DETAIL: WIRING DIAGRAM 25 & 50kVA			
DATE	01/06/2003				
CHKD	HPD GROENEHALD				
DATE	01/06/2003				
DRAWN	HPD GROENEHALD P. VERMAAS	D-DT-1002			
DATE	12/07/1996				
				SET	SHEET
				5	4
				REVISION	
				10	

LEGEND	DESCRIPTION	25kVA SPU KIOSK	50kVA SPU KIOSK
	THREE PHASE WHOLE CURRENTMETER, 100A, CALIBRATED, SEALED AND WITH TESTED STICKER	ESKOM APPROVED METER	ESKOM APPROVED METER
	CIRCUIT BREAKER 3 PHASE HYDRAULIC MAGNETIC or ELECTRONIC	CBI: QF-3(18) or QF-3(26) 40A 5KA CURVE 1, DIN RAIL MOUNTED	CBI: QF-3(26) 80A 5KA CURVE 1, DIN RAIL MOUNTED
	WIRING	25mm SQUARE COLOUR CODED PVC INSULATED CABLE, RATED VOLTAGE 600/1000V, SANS 1507	
	TERMINAL	WEIDMULLER: TYPE WDU35N or KLEMSAN: TYPE AVK35 or ALSTOM ELMEX KUT35 PHOENIX CONTACT: TYPE UIK35 ABB: TYPE ZS35	
	BRIDGE BAR	WEIDMULLER WQV35/2 or KLEMSAN UK 35/2 or ALSTOM ELMEX CCLA 35K-2W PHOENIX CONTACT: TYPE FBI 2-15 ABB: TYPE JB16-2	
	END STOP	WEIDMULLER EW35 or LEGRAND VIKING 3 39403 or ENTRELEC BAM or KLEMSAN KD3 or PHOENIX CONTACT: E/UK or CLIPFIX 35 ABB: TYPE BAZH1	
	FUSE BASE (SEALABLE) 10x38 FUSE - 32A, 500VAC, CLASS aM	ELECTRO MECHANICA: df TYPE PMF 10x38 or WOHNER TYPE AES 10x38 INDUSTRIAL 1 POLE FUSE HOLDER + 32A CLASS aM CYLINDRICAL FUSE	
	SURGE ARRESTOR: I <sub>max</sub> (8/20ms) 40kA or 65kA (4/20ms) 275V (SINGLE POLE DIN) SANS IEC 61643-1	CBI: TYPE QKL1-(13)D 275V 20/40kA (CBI BOM CODE QKLD0001) or SIMILAR	

CONTROL WIRING SPECIFICATION:		
DESIGNATION	COLOUR	CONDUCTOR SIZE
RED PHASE VOLTAGE (TERMINAL TO FUSE HOLDER)	RED	6mm <sup>2</sup>
WHITE PHASE VOLTAGE (TERMINAL TO FUSE HOLDER)	WHITE	6mm <sup>2</sup>
BLUE PHASE VOLTAGE (TERMINAL TO FUSE HOLDER)	BLUE	6mm <sup>2</sup>
RED PHASE VOLTAGE (ALL OTHER VT WIRING)	RED	2,5mm <sup>2</sup>
WHITE PHASE VOLTAGE (ALL OTHER VT WIRING)	WHITE	2,5mm <sup>2</sup>
BLUE PHASE VOLTAGE (ALL OTHER VT WIRING)	BLUE	2,5mm <sup>2</sup>

10	ADDED SURGE ARRESTORS AND FUSE HOLDERS	HPD G	HPD GROENEHALD	02/10/2018	
9	CHANGED DIMENSIONS, ADDED PROTECTIVE BOX, REMOVED 100kVA OPTION	HPD G	HPD GROENEHALD	20/06/2014	
8	CHANGED DOOR DESIGN, ADDED ACCEPTED PRODUCTS	HPD G	HPD GROENEHALD	09/02/2010	
7	VARIOUS AMENDMENTS DONE TO LAYOUTS	HPD G	HPD GROENEHALD	01/02/2007	
6	HEIGHT INCREASED, WINDOW CHANGED, METER HOLES MOVED	HPD G	HPD GROENEHALD	10/02/2006	
5	COMPLETE DESIGN CHANGE, INCORPORATING A THREE PHASE ELECTRONIC/COMBIN. METER	HPD G	H PR G	28/01/2004	
4	COPPER BUSBARS TIMING, DOCUMENT BOX ADDED	HPD G	T G PR G	25/02/2003	
REV	REVISION DESCRIPTION	BY	CHKD	AUTH	DATE PROJECT NO.



METER KIOSK  
SPU 3 PHASE 25 & 50kVA  
MANUFACTURING DETAIL:  
APPROVED EQUIPMENT

AUTN: PR GROENEHALD	D-DT-1002		
DATE: 01/06/2003			
CHKD: HPD GROENEHALD			
DATE: 01/06/2003			
DRAWN: HPD GROENEHALD P. VERMAAS	SET	SHEET	REVISION
DATE: 12/07/1996	5	5	10